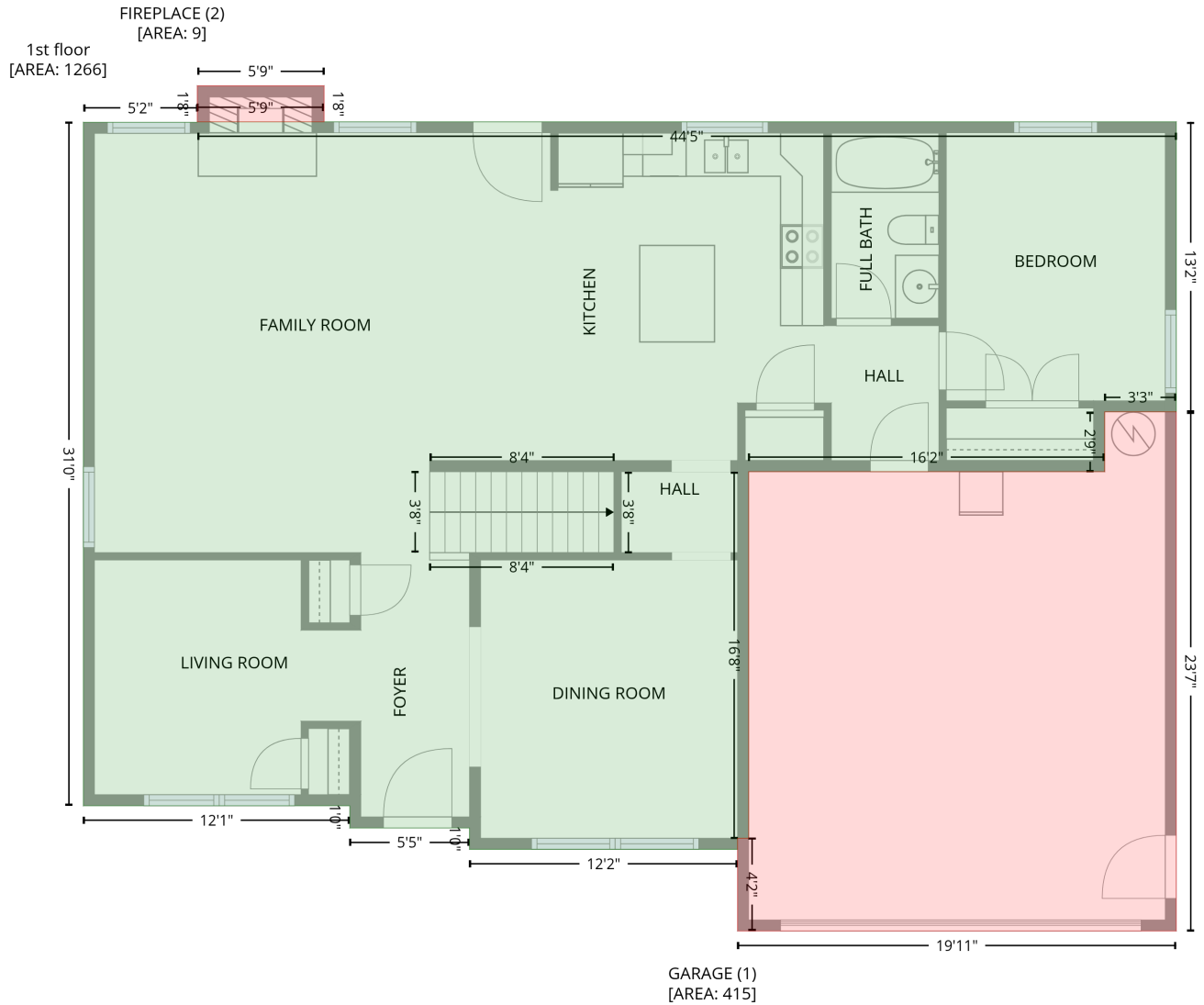


725 Fulford McMillan Rd,Raeford,NC,US

Gross Living Area: 2834 sq. ft

Level 1



Space	Area (sq. ft)	Calculation <small>Coordinate Polygon Area Algorithm using inches</small>
1st floor (Living area)	1266	$-\left((603.2 + 603.2) * (5.9 - 163.8) + (603.2 + 564.2) * (163.8 - 163.8) + (564.2 + 564.2) * (163.8 - 196.4) + (564.2 + 370.3) * (196.4 - 196.4) + (370.3 + 370.3) * (196.4 - 396) + (370.3 + 364.3) * (396 - 396) + (364.3 + 364.3) * (396 - 402) + (364.3 + 218.4) * (402 - 402) + (218.4 + 218.4) * (402 - 390.4) + (218.4 + 153.2) * (390.4 - 390.4) + (153.2 + 153.2) * (390.4 - 378.3) + (153.2 + 8.2) * (378.3 - 378.3) + (8.2 + 8.2) * (378.3 - 6.2) + (8.2 + 70.2) * (6.2 - 6.2) + (70.2 + 70.2) * (6.2 - 5.9) + (70.2 + 603.2) * (5.9 - 5.9)\right) * 0.5 * 0.00694$
GARAGE (Non-living area)	415	$-\left((603.2 + 603.2) * (163.8 - 446.4) + (603.2 + 364.3) * (446.4 - 446.4) + (364.3 + 364.3) * (446.4 - 396) + (364.3 + 370.3) * (396 - 396) + (370.3 + 370.3) * (396 - 196.4) + (370.3 + 564.2) * (196.4 - 196.4) + (564.2 + 564.2) * (196.4 - 163.8) + (564.2 + 603.2) * (163.8 - 163.8)\right) * 0.5 * 0.00694$
FIREPLACE (Non-living area)	9	$-\left((139.2 + 139.2) * (-13.6 - 5.9) + (139.2 + 70.2) * (5.9 - 5.9) + (70.2 + 70.2) * (5.9 - -13.6) + (70.2 + 139.2) * (-13.6 - -13.6)\right) * 0.5 * 0.00694$

725 Fulford McMillan Rd,Raeford,NC,US

Gross Living Area: 2834 sq. ft

Level 2

2nd floor
[AREA: 1568]



Space	Area (sq. ft)	Calculation <small>Coordinate Polygon Area Algorithm using inches</small>
2nd floor (Living area)	1568	$-((603.2 + 603.2) * (6.2 - 378.3) + (603.2 + 370.3) * (378.3 - 378.3) + (370.3 + 370.3) * (378.3 - 402) + (370.3 + 218.4) * (402 - 402) + (218.4 + 218.4) * (402 - 390.4) + (218.4 + 153.2) * (390.4 - 390.4) + (153.2 + 153.2) * (390.4 - 378.3) + (153.2 + 8.2) * (378.3 - 378.3) + (8.2 + 8.2) * (378.3 - 6.2) + (8.2 + 603.2) * (6.2 - 6.2)) * 0.5 * 0.00694$