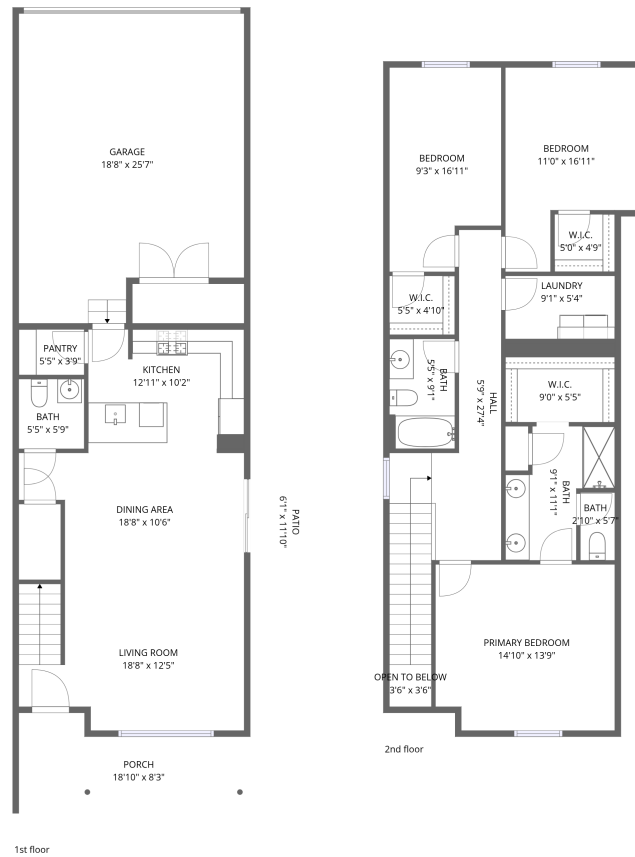


Home data report

2726 Barnstormer St,#6,Fort Collins,CO,US, #6



Total Area: 1656 sq. ft


1st Floor: 636 sq. ft, 2nd Floor: 1020 sq. ft

Excluded: Patio 72 sq. ft, Porch 130 sq. ft, Garage 440 sq. ft, Open to below 12 sq. ft,

Walls: 176 sq. ft

Property summary

 **2** Floors

 **3** Bedrooms

 **2** Bathrooms

Home data report

2726 Barnstormer St,#6, Fort Collins, CO, US, #6

 **1**
Half baths

 **1**
Garages

Home data report

2726 Barnstormer St,#6,Fort Collins,CO,US, #6



Room dimensions

Floor 1

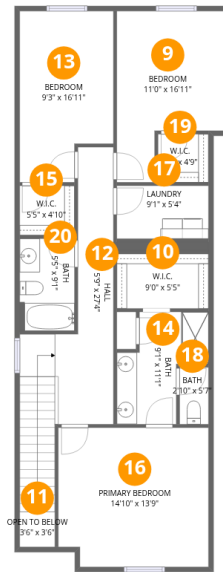
Total:636sqft

Excluded: 642sqft

#		Dimensions	sqft	Counted as living area
1	Porch	18'10" x 8'3"	130 sq. ft	No
2	Living Room	18'8" x 12'5"	217 sq. ft	Yes
3	Kitchen	12'11" x 10'2"	130 sq. ft	Yes
4	Bath	5'5" x 5'9"	31 sq. ft	Yes
5	Pantry	5'5" x 3'9"	20 sq. ft	Yes
6	Dining Area	18'8" x 10'6"	170 sq. ft	Yes
7	Patio	6'1" x 11'10"	72 sq. ft	No
8	Garage	18'8" x 25'7"	440 sq. ft	No

Home data report

2726 Barnstormer St,#6,Fort Collins,CO,US, #6



Room dimensions

Floor 2

Total:1020sqft Excluded: 12sqft

#		Dimensions	sqft	Counted as living area
9	Bedroom	11'0" x 16'11"	149 sq. ft	Yes
10	W.I.C.	9'0" x 5'5"	49 sq. ft	Yes
11	Open To Below	3'6" x 3'6"	12 sq. ft	No
12	Hall	5'9" x 27'4"	177 sq. ft	Yes
13	Bedroom	9'3" x 16'11"	142 sq. ft	Yes
14	Bath	9'1" x 11'1"	72 sq. ft	Yes
15	W.I.C.	5'5" x 4'10"	26 sq. ft	Yes
16	Primary Bedroom	14'10" x 13'9"	199 sq. ft	Yes
17	Laundry	9'1" x 5'4"	47 sq. ft	Yes
18	Bath	2'10" x 5'7"	16 sq. ft	Yes
19	W.I.C.	5'0" x 4'9"	24 sq. ft	Yes

Home data report

2726 Barnstormer St,#6, Fort Collins, CO, US, #6

#		Dimensions	sqft	Counted as living area
20	Bath	5'5" x 9'1"	49 sq. ft	Yes

1 Floor 1 - Porch



Dimensions: 18'10" x 8'3"
Area: 130 sq. ft
Counted as living area: No

Heated: No
Finished: No
Enclosed: No
Contiguous: Yes
Permitted: Yes
Wet space: No
Addition: No
Conversion: No

2 Floor 1 - Living Room



Dimensions: 18'8" x 12'5"
Area: 217 sq. ft
Counted as living area: Yes

Heated: Yes
Finished: Yes
Enclosed: Yes
Contiguous: Yes
Permitted: Yes
Wet space: No
Addition: No
Conversion: No

3 Floor 1 - Kitchen



Dimensions: 12'11" x 10'2"
Area: 130 sq. ft
Counted as living area: Yes

Heated: Yes
Finished: Yes
Enclosed: Yes
Contiguous: Yes
Permitted: Yes
Wet space: No
Addition: No
Conversion: No

4 Floor 1 - Bath



Dimensions: 5'5" x 5'9"
Area: 31 sq. ft
Counted as living area: Yes

Heated: Yes
Finished: Yes
Enclosed: Yes
Contiguous: Yes
Permitted: Yes
Wet space: Yes
Addition: No
Conversion: No

5 Floor 1 - Pantry



Dimensions: 5'5" x 3'9"
Area: 20 sq. ft
Counted as living area: Yes

Heated: Yes
Finished: Yes
Enclosed: Yes
Contiguous: Yes
Permitted: Yes
Wet space: No
Addition: No
Conversion: No

6 Floor 1 - Dining Area



Dimensions: 18'8" x 10'6"
Area: 170 sq. ft
Counted as living area: Yes

Heated: Yes
Finished: Yes
Enclosed: Yes
Contiguous: Yes
Permitted: Yes
Wet space: No
Addition: No
Conversion: No

7 Floor 1 - Patio



Dimensions: 6'1" x 11'10"
Area: 72 sq. ft
Counted as living area: No

Heated: No
Finished: No
Enclosed: No
Contiguous: Yes
Permitted: Yes
Wet space: No
Addition: No
Conversion: No

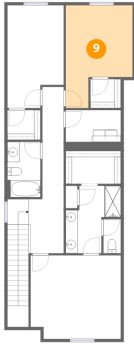
8 Floor 1 - Garage



Dimensions: 18'8" x 25'7"
Area: 440 sq. ft
Counted as living area: No

Heated: No
Finished: No
Enclosed: Yes
Contiguous: Yes
Permitted: Yes
Wet space: No
Addition: No
Conversion: No

9 Floor 2 - Bedroom



Dimensions: 11'0" x 16'11"
Area: 149 sq. ft
Counted as living area: Yes

Heated: Yes
Finished: Yes
Enclosed: Yes
Contiguous: Yes
Permitted: Yes
Wet space: No
Addition: No
Conversion: No

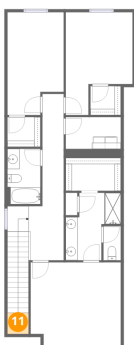
10 Floor 2 - W.I.C.



Dimensions: 9'0" x 5'5"
Area: 49 sq. ft
Counted as living area: Yes

Heated: Yes
Finished: Yes
Enclosed: Yes
Contiguous: Yes
Permitted: Yes
Wet space: No
Addition: No
Conversion: No

11 Floor 2 - Open To Below



Dimensions: 3'6" x 3'6"
Area: 12 sq. ft
Counted as living area: No

Heated: No
Finished: No
Enclosed: No
Contiguous: Yes
Permitted: No
Wet space: No
Addition: No
Conversion: No

12 Floor 2 - Hall



Dimensions: 5'9" x 27'4"
Area: 177 sq. ft
Counted as living area: Yes

Heated: Yes
Finished: Yes
Enclosed: Yes
Contiguous: Yes
Permitted: Yes
Wet space: No
Addition: No
Conversion: No

13 Floor 2 - Bedroom



Dimensions: 9'3" x 16'11"
Area: 142 sq. ft
Counted as living area: Yes

Heated: Yes
Finished: Yes
Enclosed: Yes
Contiguous: Yes
Permitted: Yes
Wet space: No
Addition: No
Conversion: No

14 Floor 2 - Bath



Dimensions: 9'1" x 11'1"
Area: 72 sq. ft
Counted as living area: Yes

Heated: Yes
Finished: Yes
Enclosed: Yes
Contiguous: Yes
Permitted: Yes
Wet space: Yes
Addition: No
Conversion: No

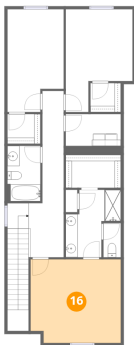
15 Floor 2 - W.I.C.



Dimensions: 5'5" x 4'10"
Area: 26 sq. ft
Counted as living area: Yes

Heated: Yes
Finished: Yes
Enclosed: Yes
Contiguous: Yes
Permitted: Yes
Wet space: No
Addition: No
Conversion: No

16 Floor 2 - Primary Bedroom



Dimensions: 14'10" x 13'9"
Area: 199 sq. ft
Counted as living area: Yes

Heated: Yes
Finished: Yes
Enclosed: Yes
Contiguous: Yes
Permitted: Yes
Wet space: No
Addition: No
Conversion: No

17 Floor 2 - Laundry



Dimensions: 9'1" x 5'4"
Area: 47 sq. ft
Counted as living area: Yes

Heated: Yes
Finished: Yes
Enclosed: Yes
Contiguous: Yes
Permitted: Yes
Wet space: No
Addition: No
Conversion: No

18 Floor 2 - Bath



Dimensions: 2'10" x 5'7"
Area: 16 sq. ft
Counted as living area: Yes

Heated: Yes
Finished: Yes
Enclosed: Yes
Contiguous: Yes
Permitted: Yes
Wet space: Yes
Addition: No
Conversion: No

19 Floor 2 - W.I.C.



Dimensions: 5'0" x 4'9"
Area: 24 sq. ft
Counted as living area: Yes

Heated: Yes
Finished: Yes
Enclosed: Yes
Contiguous: Yes
Permitted: Yes
Wet space: No
Addition: No
Conversion: No

20 Floor 2 - Bath



Dimensions: 5'5" x 9'1"
Area: 49 sq. ft
Counted as living area: Yes

Heated: Yes
Finished: Yes
Enclosed: Yes
Contiguous: Yes
Permitted: Yes
Wet space: Yes
Addition: No
Conversion: No