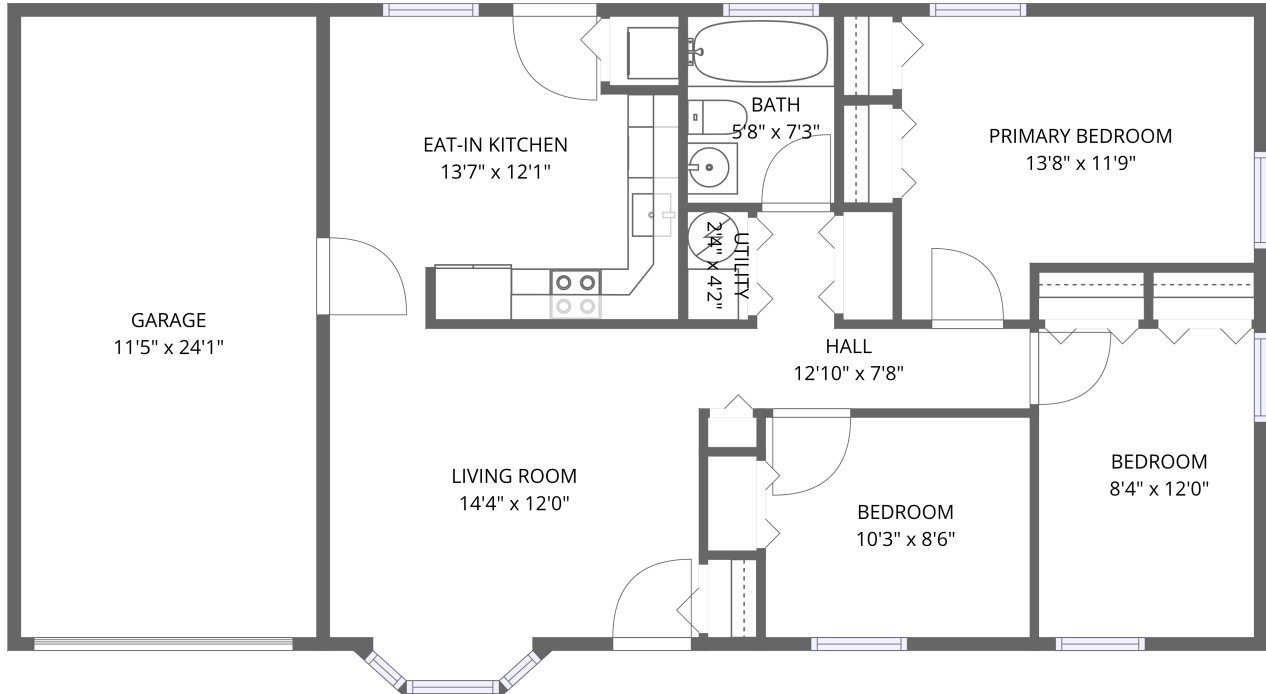


Home data report

**184 Joyce Terrace, Whitman, Plymouth County, Massachusetts,  
United States, 02382**



1st floor

**Total Area: 854 sq. ft**

1st Floor: 854 sq. ft

Excluded: Garage 276 sq. ft, Utility 10 sq. ft, Embedded window 10 sq. ft, Walls: 85 sq. ft

## Property summary

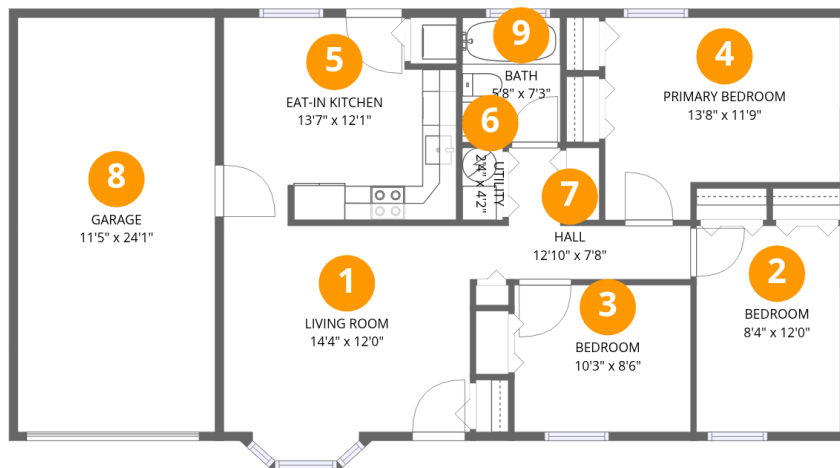
 **1**  
Floors

 **3**  
Bedrooms

 **1**  
Bathrooms

 **1**  
Garages

**184 Joyce Terrace, Whitman, Plymouth County, Massachusetts, United States, 02382**



**Room dimensions**

Floor 1

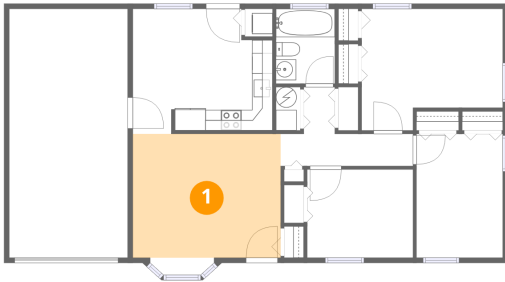
Total:854sqft Excluded: 296sqft

#		Dimensions	sqft	Counted as living area
1	Living Room	14'4" x 12'0"	172 sq. ft	Yes
2	Bedroom	8'4" x 12'0"	100 sq. ft	Yes
3	Bedroom	10'3" x 8'6"	88 sq. ft	Yes
4	Primary Bedroom	13'8" x 11'9"	161 sq. ft	Yes
5	Eat-in Kitchen	13'7" x 12'1"	164 sq. ft	Yes
6	Utility	2'4" x 4'2"	10 sq. ft	No
7	Hall	12'10" x 7'8"	98 sq. ft	Yes
8	Garage	11'5" x 24'1"	275 sq. ft	No
9	Bath	5'8" x 7'3"	41 sq. ft	Yes

**184 Joyce Terrace, Whitman, Plymouth County, Massachusetts,  
United States, 02382**

**1 Floor 1 - Living Room**

---

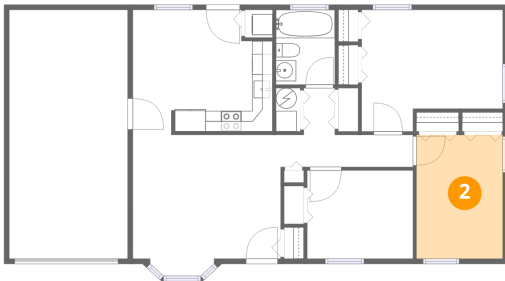


**Dimensions:** 14'4" x 12'0"  
**Area:** 172 sq. ft  
**Counted as living area:** Yes

**Heated:** Yes  
**Finished:** Yes  
**Enclosed:** Yes  
**Contiguous:** Yes  
**Permitted:** Yes  
**Wet space:** No  
**Addition:** No  
**Conversion:** No

**2 Floor 1 - Bedroom**

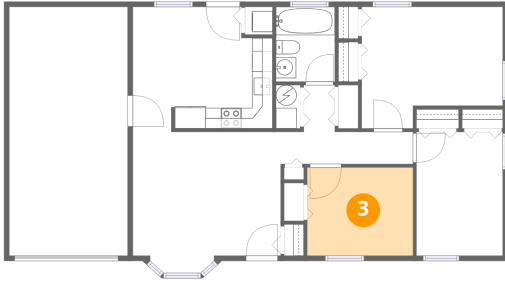
---



**Dimensions:** 8'4" x 12'0"  
**Area:** 100 sq. ft  
**Counted as living area:** Yes

**Heated:** Yes  
**Finished:** Yes  
**Enclosed:** Yes  
**Contiguous:** Yes  
**Permitted:** Yes  
**Wet space:** No  
**Addition:** No  
**Conversion:** No

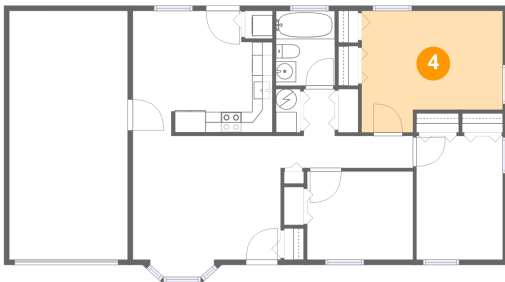
**3** Floor 1 - Bedroom



Dimensions: 10'3" x 8'6"  
Area: 88 sq. ft  
Counted as living area: Yes

Heated: Yes  
Finished: Yes  
Enclosed: Yes  
Contiguous: Yes  
Permitted: Yes  
Wet space: No  
Addition: No  
Conversion: No

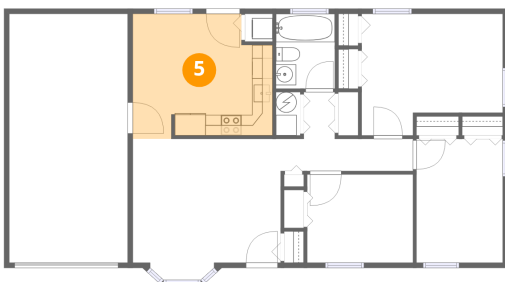
**4** Floor 1 - Primary Bedroom



Dimensions: 13'8" x 11'9"  
Area: 161 sq. ft  
Counted as living area: Yes

Heated: Yes  
Finished: Yes  
Enclosed: Yes  
Contiguous: Yes  
Permitted: Yes  
Wet space: No  
Addition: No  
Conversion: No

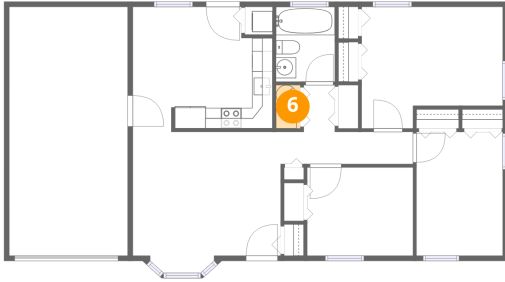
**5** Floor 1 - Eat-in Kitchen



Dimensions: 13'7" x 12'1"  
Area: 164 sq. ft  
Counted as living area: Yes

Heated: Yes  
Finished: Yes  
Enclosed: Yes  
Contiguous: Yes  
Permitted: Yes  
Wet space: No  
Addition: No  
Conversion: No

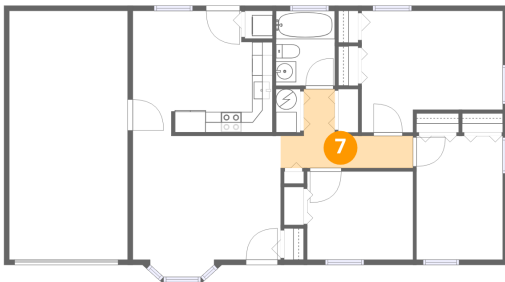
## 6 Floor 1 - Utility



Dimensions: 2'4" x 4'2"  
Area: 10 sq. ft  
Counted as living area: No

Heated: Yes  
Finished: No  
Enclosed: Yes  
Contiguous: Yes  
Permitted: Yes  
Wet space: No  
Addition: No  
Conversion: No

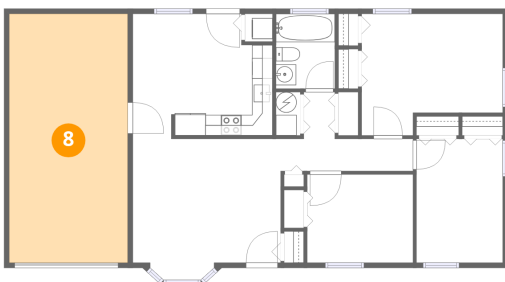
## 7 Floor 1 - Hall



Dimensions: 12'10" x 7'8"  
Area: 98 sq. ft  
Counted as living area: Yes

Heated: Yes  
Finished: Yes  
Enclosed: Yes  
Contiguous: Yes  
Permitted: Yes  
Wet space: No  
Addition: No  
Conversion: No

## 8 Floor 1 - Garage



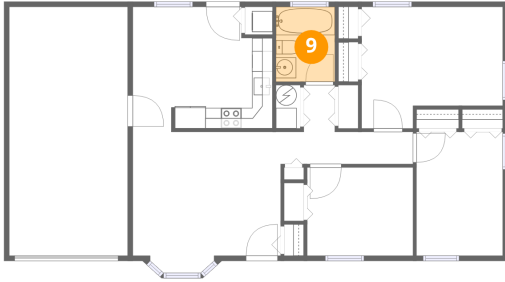
Dimensions: 11'5" x 24'1"  
Area: 275 sq. ft  
Counted as living area: No

Heated: No  
Finished: No  
Enclosed: Yes  
Contiguous: Yes  
Permitted: Yes  
Wet space: No  
Addition: No  
Conversion: No

Home data report

184 Joyce Terrace, Whitman, Plymouth County, Massachusetts,  
United States, 02382

**9** Floor 1 - Bath



Dimensions: 5'8" x 7'3"  
Area: 41 sq. ft  
Counted as living area: Yes

Heated: Yes  
Finished: Yes  
Enclosed: Yes  
Contiguous: Yes  
Permitted: Yes  
Wet space: Yes  
Addition: No  
Conversion: No