

## Home data report

**8808 Ravenswood Road, Pecan Plantation, Granbury, Johnson County, Texas, United States, 76049**



**Total Area: 2709 sq. ft**

1st Floor: 2709 sq. ft

Excluded: Garage 427 sq. ft, Screened porch 160 sq. ft, Embedded window 4 sq. ft, Fireplace 8 sq. ft, Walls: 180 sq. ft

## Property summary



Home data report

**8808 Ravenswood Road, Pecan Plantation, Granbury, Johnson  
County, Texas, United States, 76049**

 **1**  
Half baths

 **1**  
Garages

Home data report

8808 Ravenswood Road, Pecan Plantation, Granbury, Johnson County, Texas, United States, 76049



Room dimensions

Floor 1

Total:2709sqft Excluded: 599sqft

#		Dimensions	sqft	Counted as living area
1	Hall	8'4" x 3'2"	26 sq. ft	Yes
2	Dining Area	10'11" x 17'5"	189 sq. ft	Yes
3	Bath	6'11" x 4'9"	33 sq. ft	Yes
4	Office	10'0" x 11'2"	111 sq. ft	Yes
5	Bath	2'9" x 6'2"	17 sq. ft	Yes
6	Pantry	5'10" x 4'1"	24 sq. ft	Yes
7	W.I.C.	16'0" x 4'10"	78 sq. ft	Yes
8	Bedroom	16'0" x 12'10"	206 sq. ft	Yes
9	Living Room	21'7" x 16'2"	350 sq. ft	Yes
10	W.I.C.	5'1" x 4'11"	25 sq. ft	Yes
11	Bath	5'1" x 4'2"	21 sq. ft	Yes

Home data report

**8808 Ravenswood Road, Pecan Plantation, Granbury, Johnson County, Texas, United States, 76049**

#		Dimensions	sqft	Counted as living area
12	Family Room	17'0" x 14'2"	241 sq. ft	Yes
13	Primary Bath	13'0" x 8'11"	116 sq. ft	Yes
14	Bath	9'2" x 5'2"	47 sq. ft	Yes
15	Primary Bedroom	22'0" x 21'5"	472 sq. ft	Yes
16	Screened Porch	17'10" x 9'0"	160 sq. ft	No
17	Foyer	11'4" x 11'8"	132 sq. ft	Yes
18	Garage	20'4" x 22'1"	449 sq. ft	No
19	W.I.C.	3'11" x 5'2"	20 sq. ft	Yes
20	Hall	3'10" x 11'6"	44 sq. ft	Yes
21	Office	10'4" x 11'8"	121 sq. ft	Yes
22	Wet Bar	4'2" x 7'1"	30 sq. ft	Yes
23	Laundry	5'10" x 10'3"	60 sq. ft	Yes
24	Kitchen	17'3" x 12'9"	220 sq. ft	Yes
25	Bedroom	11'1" x 16'0"	178 sq. ft	Yes

8808 Ravenswood Road, Pecan Plantation, Granbury, Johnson County, Texas, United States, 76049

**1** Floor 1 - Hall

---

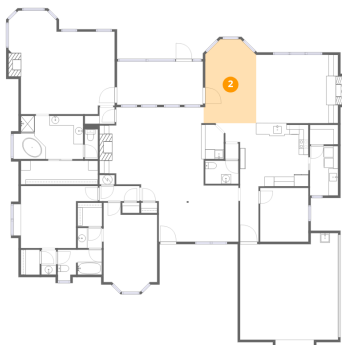


Dimensions: 8'4" x 3'2"  
Area: 26 sq. ft  
Counted as living area: Yes

Heated: Yes  
Finished: Yes  
Enclosed: Yes  
Contiguous: Yes  
Permitted: Yes  
Wet space: No  
Addition: No  
Conversion: No

**2** Floor 1 - Dining Area

---



Dimensions: 10'11" x 17'5"  
Area: 189 sq. ft  
Counted as living area: Yes

Heated: Yes  
Finished: Yes  
Enclosed: Yes  
Contiguous: Yes  
Permitted: Yes  
Wet space: No  
Addition: No  
Conversion: No

# 8808 Ravenswood Road, Pecan Plantation, Granbury, Johnson County, Texas, United States, 76049

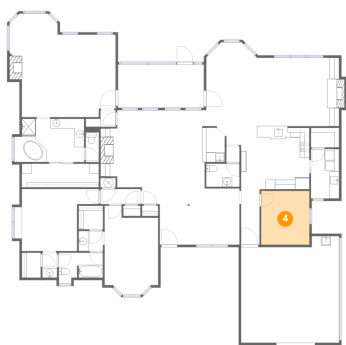
## 3 Floor 1 - Bath



Dimensions: 6'11" x 4'9"  
Area: 33 sq. ft  
Counted as living area: Yes

Heated: Yes  
Finished: Yes  
Enclosed: Yes  
Contiguous: Yes  
Permitted: Yes  
Wet space: Yes  
Addition: No  
Conversion: No

## 4 Floor 1 - Office



Dimensions: 10'0" x 11'2"  
Area: 111 sq. ft  
Counted as living area: Yes

Heated: Yes  
Finished: Yes  
Enclosed: Yes  
Contiguous: Yes  
Permitted: Yes  
Wet space: No  
Addition: No  
Conversion: No

## 5 Floor 1 - Bath



Dimensions: 2'9" x 6'2"  
Area: 17 sq. ft  
Counted as living area: Yes

Heated: Yes  
Finished: Yes  
Enclosed: Yes  
Contiguous: Yes  
Permitted: Yes  
Wet space: No  
Addition: No  
Conversion: No

8808 Ravenswood Road, Pecan Plantation, Granbury, Johnson County, Texas, United States, 76049

**6** Floor 1 - Pantry



Dimensions: 5'10" x 4'1"  
Area: 24 sq. ft  
Counted as living area: Yes

Heated: Yes  
Finished: Yes  
Enclosed: Yes  
Contiguous: Yes  
Permitted: Yes  
Wet space: No  
Addition: No  
Conversion: No

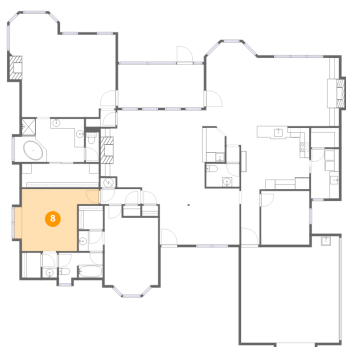
**7** Floor 1 - W.I.C.



Dimensions: 16'0" x 4'10"  
Area: 78 sq. ft  
Counted as living area: Yes

Heated: Yes  
Finished: Yes  
Enclosed: Yes  
Contiguous: Yes  
Permitted: Yes  
Wet space: No  
Addition: No  
Conversion: No

**8** Floor 1 - Bedroom

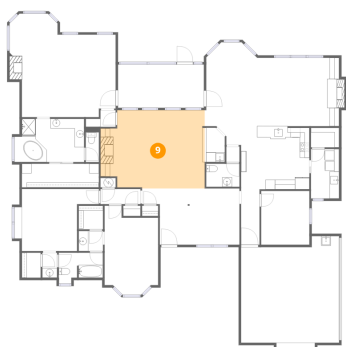


Dimensions: 16'0" x 12'10"  
Area: 206 sq. ft  
Counted as living area: Yes

Heated: Yes  
Finished: Yes  
Enclosed: Yes  
Contiguous: Yes  
Permitted: Yes  
Wet space: No  
Addition: No  
Conversion: No

8808 Ravenswood Road, Pecan Plantation, Granbury, Johnson County, Texas, United States, 76049

9 Floor 1 - Living Room



Dimensions: 21'7" x 16'2"  
Area: 350 sq. ft  
Counted as living area: Yes

Heated: Yes  
Finished: Yes  
Enclosed: Yes  
Contiguous: Yes  
Permitted: Yes  
Wet space: No  
Addition: No  
Conversion: No

10 Floor 1 - W.I.C.



Dimensions: 5'1" x 4'11"  
Area: 25 sq. ft  
Counted as living area: Yes

Heated: Yes  
Finished: Yes  
Enclosed: Yes  
Contiguous: Yes  
Permitted: Yes  
Wet space: No  
Addition: No  
Conversion: No

11 Floor 1 - Bath



Dimensions: 5'1" x 4'2"  
Area: 21 sq. ft  
Counted as living area: Yes

Heated: Yes  
Finished: Yes  
Enclosed: Yes  
Contiguous: Yes  
Permitted: Yes  
Wet space: Yes  
Addition: No  
Conversion: No

# 8808 Ravenswood Road, Pecan Plantation, Granbury, Johnson County, Texas, United States, 76049

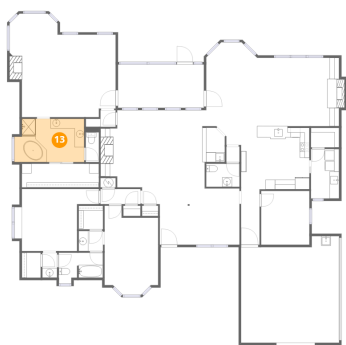
## 12 Floor 1 - Family Room



Dimensions: 17'0" x 14'2"  
Area: 241 sq. ft  
Counted as living area: Yes

Heated: Yes  
Finished: Yes  
Enclosed: Yes  
Contiguous: Yes  
Permitted: Yes  
Wet space: No  
Addition: No  
Conversion: No

## 13 Floor 1 - Primary Bath



Dimensions: 13'0" x 8'11"  
Area: 116 sq. ft  
Counted as living area: Yes

Heated: Yes  
Finished: Yes  
Enclosed: Yes  
Contiguous: Yes  
Permitted: Yes  
Wet space: Yes  
Addition: No  
Conversion: No

## 14 Floor 1 - Bath



Dimensions: 9'2" x 5'2"  
Area: 47 sq. ft  
Counted as living area: Yes

Heated: Yes  
Finished: Yes  
Enclosed: Yes  
Contiguous: Yes  
Permitted: Yes  
Wet space: Yes  
Addition: No  
Conversion: No

8808 Ravenswood Road, Pecan Plantation, Granbury, Johnson County, Texas, United States, 76049

**15** Floor 1 - Primary Bedroom



Dimensions: 22'0" x 21'5"  
Area: 472 sq. ft  
Counted as living area: Yes

Heated: Yes  
Finished: Yes  
Enclosed: Yes  
Contiguous: Yes  
Permitted: Yes  
Wet space: No  
Addition: No  
Conversion: No

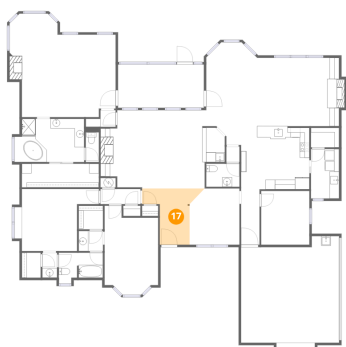
**16** Floor 1 - Screened Porch



Dimensions: 17'10" x 9'0"  
Area: 160 sq. ft  
Counted as living area: No

Heated: No  
Finished: No  
Enclosed: No  
Contiguous: Yes  
Permitted: Yes  
Wet space: No  
Addition: No  
Conversion: No

**17** Floor 1 - Foyer

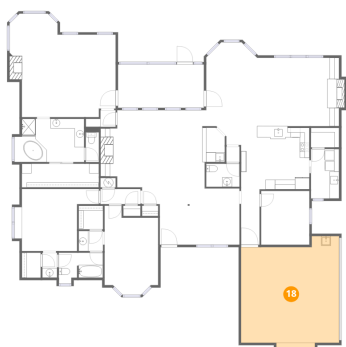


Dimensions: 11'4" x 11'8"  
Area: 132 sq. ft  
Counted as living area: Yes

Heated: Yes  
Finished: Yes  
Enclosed: Yes  
Contiguous: Yes  
Permitted: Yes  
Wet space: No  
Addition: No  
Conversion: No

# 8808 Ravenswood Road, Pecan Plantation, Granbury, Johnson County, Texas, United States, 76049

## 18 Floor 1 - Garage



Dimensions: 20'4" x 22'1"  
Area: 449 sq. ft  
Counted as living area: No

Heated: No  
Finished: No  
Enclosed: Yes  
Contiguous: Yes  
Permitted: Yes  
Wet space: No  
Addition: No  
Conversion: No

## 19 Floor 1 - W.I.C.



Dimensions: 3'11" x 5'2"  
Area: 20 sq. ft  
Counted as living area: Yes

Heated: Yes  
Finished: Yes  
Enclosed: Yes  
Contiguous: Yes  
Permitted: Yes  
Wet space: No  
Addition: No  
Conversion: No

## 20 Floor 1 - Hall



Dimensions: 3'10" x 11'6"  
Area: 44 sq. ft  
Counted as living area: Yes

Heated: Yes  
Finished: Yes  
Enclosed: Yes  
Contiguous: Yes  
Permitted: Yes  
Wet space: No  
Addition: No  
Conversion: No

8808 Ravenswood Road, Pecan Plantation, Granbury, Johnson County, Texas, United States, 76049

**21** Floor 1 - Office



Dimensions: 10'4" x 11'8"  
Area: 121 sq. ft  
Counted as living area: Yes

Heated: Yes  
Finished: Yes  
Enclosed: Yes  
Contiguous: Yes  
Permitted: Yes  
Wet space: No  
Addition: No  
Conversion: No

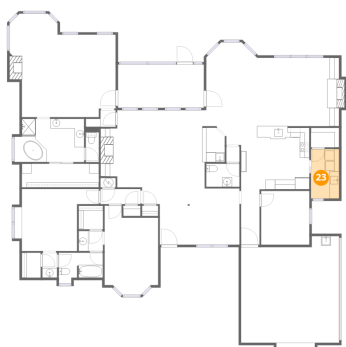
**22** Floor 1 - Wet Bar



Dimensions: 4'2" x 7'1"  
Area: 30 sq. ft  
Counted as living area: Yes

Heated: Yes  
Finished: Yes  
Enclosed: Yes  
Contiguous: Yes  
Permitted: Yes  
Wet space: No  
Addition: No  
Conversion: No

**23** Floor 1 - Laundry



Dimensions: 5'10" x 10'3"  
Area: 60 sq. ft  
Counted as living area: Yes

Heated: Yes  
Finished: Yes  
Enclosed: Yes  
Contiguous: Yes  
Permitted: Yes  
Wet space: No  
Addition: No  
Conversion: No

8808 Ravenswood Road, Pecan Plantation, Granbury, Johnson County, Texas, United States, 76049

**24** Floor 1 - Kitchen



Dimensions: 17'3" x 12'9"  
Area: 220 sq. ft  
Counted as living area: Yes

Heated: Yes  
Finished: Yes  
Enclosed: Yes  
Contiguous: Yes  
Permitted: Yes  
Wet space: No  
Addition: No  
Conversion: No

**25** Floor 1 - Bedroom



Dimensions: 11'1" x 16'0"  
Area: 178 sq. ft  
Counted as living area: Yes

Heated: Yes  
Finished: Yes  
Enclosed: Yes  
Contiguous: Yes  
Permitted: Yes  
Wet space: No  
Addition: No  
Conversion: No