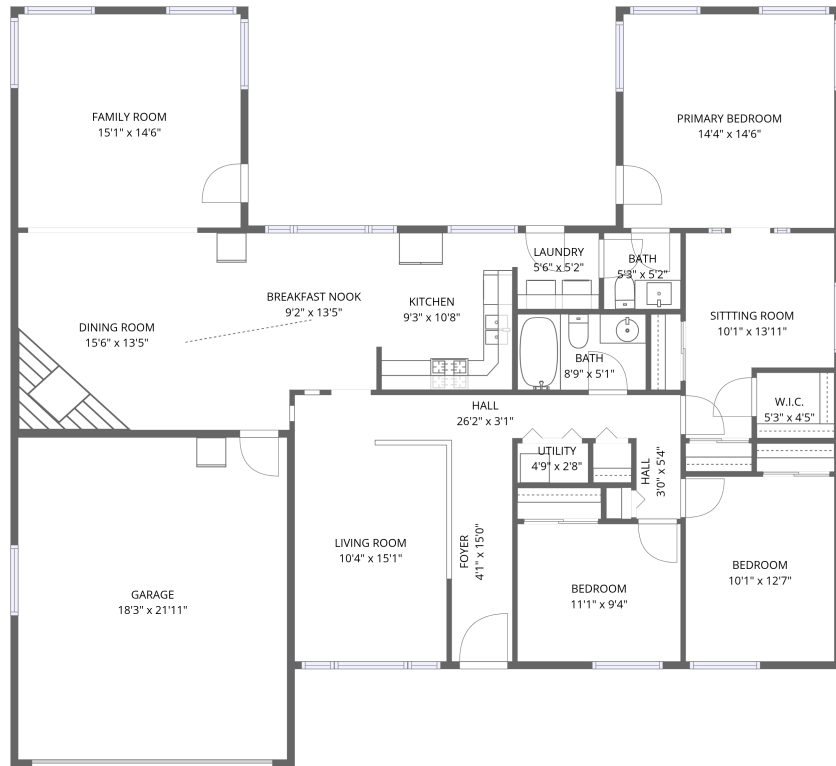
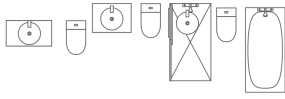


## Home data report

**631 Venice Court, Schaumburg, Cook County, Illinois, United States, 60193**



1st floor

**Total Area: 1740 sq. ft**

1st Floor: 1740 sq. ft

Excluded: Garage 400 sq. ft, Utility 14 sq. ft, Walls: 138 sq. ft

## Property summary



**1** Floors



**3** Bedrooms



**1** Bathrooms

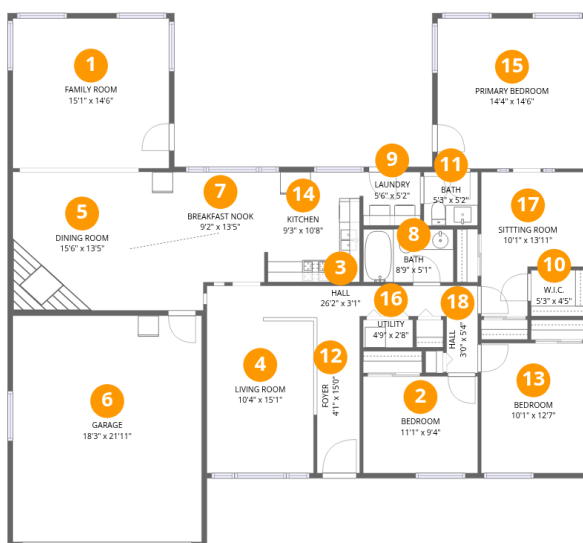
Home data report

**631 Venice Court, Schaumburg, Cook County, Illinois, United States, 60193**

 **1**  
Half baths

 **1**  
Garages

# 631 Venice Court, Schaumburg, Cook County, Illinois, United States, 60193



## Room dimensions

Floor 1

Total:1740sqft Excluded: 414sqft

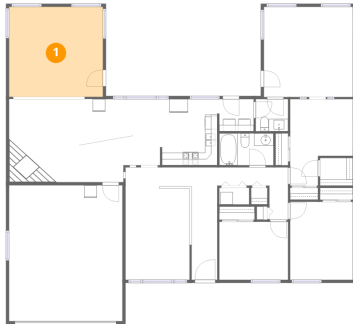
#		Dimensions	sqft	Counted as living area
1	Family Room	15'1" x 14'6"	219 sq. ft	Yes
2	Bedroom	11'1" x 9'4"	104 sq. ft	Yes
3	Hall	26'2" x 3'1"	81 sq. ft	Yes
4	Living Room	10'4" x 15'1"	155 sq. ft	Yes
5	Dining Room	15'6" x 13'5"	207 sq. ft	Yes
6	Garage	18'3" x 21'11"	399 sq. ft	No
7	Breakfast Nook	9'2" x 13'5"	123 sq. ft	Yes
8	Bath	8'9" x 5'1"	45 sq. ft	Yes
9	Laundry	5'6" x 5'2"	28 sq. ft	Yes
10	W.I.C.	5'3" x 4'5"	23 sq. ft	Yes
11	Bath	5'3" x 5'2"	27 sq. ft	Yes

Home data report

**631 Venice Court, Schaumburg, Cook County, Illinois, United States, 60193**

#		Dimensions	sqft	Counted as living area
12	Foyer	4'1" x 15'0"	62 sq. ft	Yes
13	Bedroom	10'1" x 12'7"	127 sq. ft	Yes
14	Kitchen	9'3" x 10'8"	98 sq. ft	Yes
15	Primary Bedroom	14'4" x 14'6"	208 sq. ft	Yes
16	Utility	4'9" x 2'8"	13 sq. ft	No
17	Sitting Room	10'1" x 13'11"	141 sq. ft	Yes
18	Hall	3'0" x 5'4"	16 sq. ft	Yes

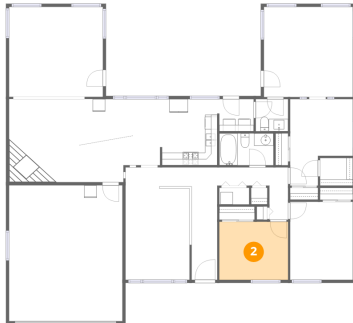
## 1 Floor 1 - Family Room



Dimensions: 15'1" x 14'6"  
Area: 219 sq. ft  
Counted as living area: Yes

Heated: Yes  
Finished: Yes  
Enclosed: Yes  
Contiguous: Yes  
Permitted: Yes  
Wet space: No  
Addition: No  
Conversion: No

## 2 Floor 1 - Bedroom

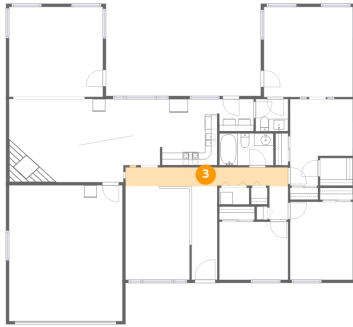


Dimensions: 11'1" x 9'4"  
Area: 104 sq. ft  
Counted as living area: Yes

Heated: Yes  
Finished: Yes  
Enclosed: Yes  
Contiguous: Yes  
Permitted: Yes  
Wet space: No  
Addition: No  
Conversion: No

631 Venice Court, Schaumburg, Cook County, Illinois, United States, 60193

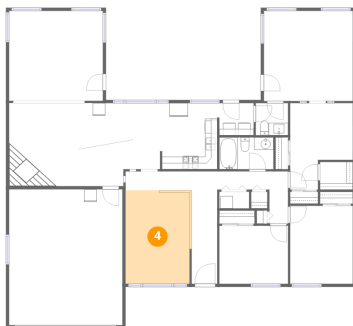
**3** Floor 1 - Hall



Dimensions: 26'2" x 3'1"  
Area: 81 sq. ft  
Counted as living area: Yes

Heated: Yes  
Finished: Yes  
Enclosed: Yes  
Contiguous: Yes  
Permitted: Yes  
Wet space: No  
Addition: No  
Conversion: No

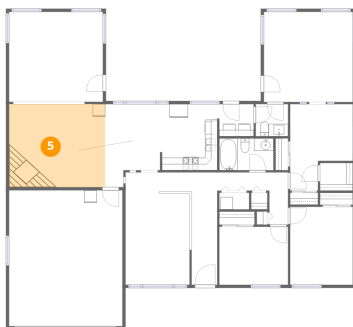
**4** Floor 1 - Living Room



Dimensions: 10'4" x 15'1"  
Area: 155 sq. ft  
Counted as living area: Yes

Heated: Yes  
Finished: Yes  
Enclosed: Yes  
Contiguous: Yes  
Permitted: Yes  
Wet space: No  
Addition: No  
Conversion: No

**5** Floor 1 - Dining Room

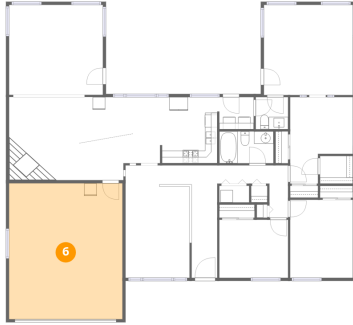


Dimensions: 15'6" x 13'5"  
Area: 207 sq. ft  
Counted as living area: Yes

Heated: Yes  
Finished: Yes  
Enclosed: Yes  
Contiguous: Yes  
Permitted: Yes  
Wet space: No  
Addition: No  
Conversion: No

631 Venice Court, Schaumburg, Cook County, Illinois, United States, 60193

**6** Floor 1 - Garage



Dimensions: 18'3" x 21'11"  
Area: 399 sq. ft  
Counted as living area: No

Heated: No  
Finished: No  
Enclosed: Yes  
Contiguous: Yes  
Permitted: Yes  
Wet space: No  
Addition: No  
Conversion: No

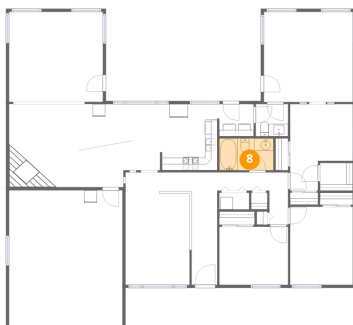
**7** Floor 1 - Breakfast Nook



Dimensions: 9'2" x 13'5"  
Area: 123 sq. ft  
Counted as living area: Yes

Heated: Yes  
Finished: Yes  
Enclosed: Yes  
Contiguous: Yes  
Permitted: Yes  
Wet space: No  
Addition: No  
Conversion: No

**8** Floor 1 - Bath

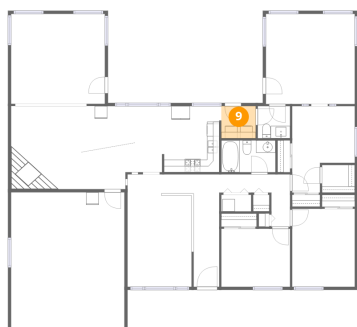


Dimensions: 8'9" x 5'1"  
Area: 45 sq. ft  
Counted as living area: Yes

Heated: Yes  
Finished: Yes  
Enclosed: Yes  
Contiguous: Yes  
Permitted: Yes  
Wet space: Yes  
Addition: No  
Conversion: No

# 631 Venice Court, Schaumburg, Cook County, Illinois, United States, 60193

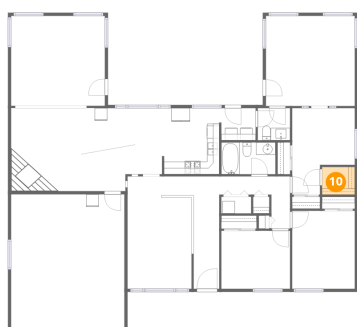
## 9 Floor 1 - Laundry



Dimensions: 5'6" x 5'2"  
Area: 28 sq. ft  
Counted as living area: Yes

Heated: Yes  
Finished: Yes  
Enclosed: Yes  
Contiguous: Yes  
Permitted: Yes  
Wet space: No  
Addition: No  
Conversion: No

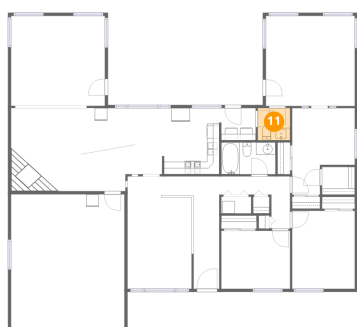
## 10 Floor 1 - W.I.C.



Dimensions: 5'3" x 4'5"  
Area: 23 sq. ft  
Counted as living area: Yes

Heated: Yes  
Finished: Yes  
Enclosed: Yes  
Contiguous: Yes  
Permitted: Yes  
Wet space: No  
Addition: No  
Conversion: No

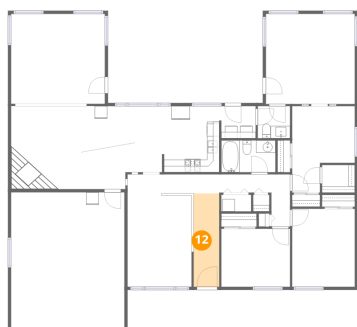
## 11 Floor 1 - Bath



Dimensions: 5'3" x 5'2"  
Area: 27 sq. ft  
Counted as living area: Yes

Heated: Yes  
Finished: Yes  
Enclosed: Yes  
Contiguous: Yes  
Permitted: Yes  
Wet space: Yes  
Addition: No  
Conversion: No

### 12 Floor 1 - Foyer



Dimensions: 4'1" x 15'0"  
Area: 62 sq. ft  
Counted as living area: Yes

Heated: Yes  
Finished: Yes  
Enclosed: Yes  
Contiguous: Yes  
Permitted: Yes  
Wet space: No  
Addition: No  
Conversion: No

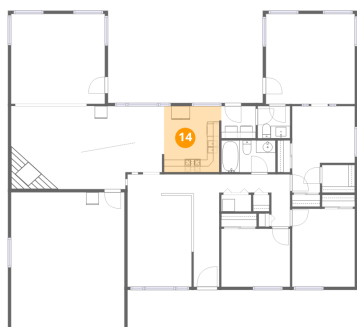
### 13 Floor 1 - Bedroom



Dimensions: 10'1" x 12'7"  
Area: 127 sq. ft  
Counted as living area: Yes

Heated: Yes  
Finished: Yes  
Enclosed: Yes  
Contiguous: Yes  
Permitted: Yes  
Wet space: No  
Addition: No  
Conversion: No

### 14 Floor 1 - Kitchen



Dimensions: 9'3" x 10'8"  
Area: 98 sq. ft  
Counted as living area: Yes

Heated: Yes  
Finished: Yes  
Enclosed: Yes  
Contiguous: Yes  
Permitted: Yes  
Wet space: No  
Addition: No  
Conversion: No

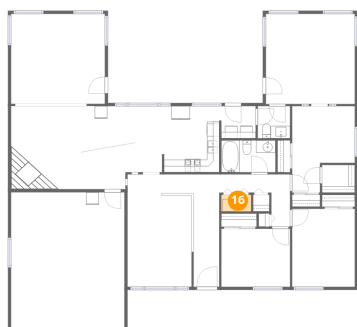
### 15 Floor 1 - Primary Bedroom



Dimensions: 14'4" x 14'6"  
Area: 208 sq. ft  
Counted as living area: Yes

Heated: Yes  
Finished: Yes  
Enclosed: Yes  
Contiguous: Yes  
Permitted: Yes  
Wet space: No  
Addition: No  
Conversion: No

### 16 Floor 1 - Utility



Dimensions: 4'9" x 2'8"  
Area: 13 sq. ft  
Counted as living area: No

Heated: Yes  
Finished: No  
Enclosed: Yes  
Contiguous: Yes  
Permitted: Yes  
Wet space: No  
Addition: No  
Conversion: No

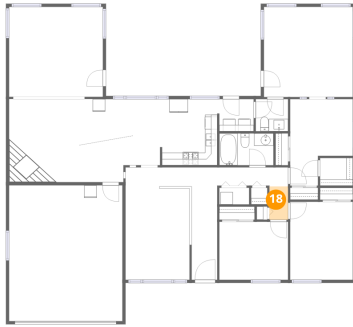
### 17 Floor 1 - Sitting Room



Dimensions: 10'1" x 13'11"  
Area: 141 sq. ft  
Counted as living area: Yes

Heated: Yes  
Finished: Yes  
Enclosed: Yes  
Contiguous: Yes  
Permitted: Yes  
Wet space: No  
Addition: No  
Conversion: No

**18** Floor 1 - Hall



**Dimensions:** 3'0" x 5'4"  
**Area:** 16 sq. ft  
**Counted as living area:** Yes

**Heated:** Yes  
**Finished:** Yes  
**Enclosed:** Yes  
**Contiguous:** Yes  
**Permitted:** Yes  
**Wet space:** No  
**Addition:** No  
**Conversion:** No