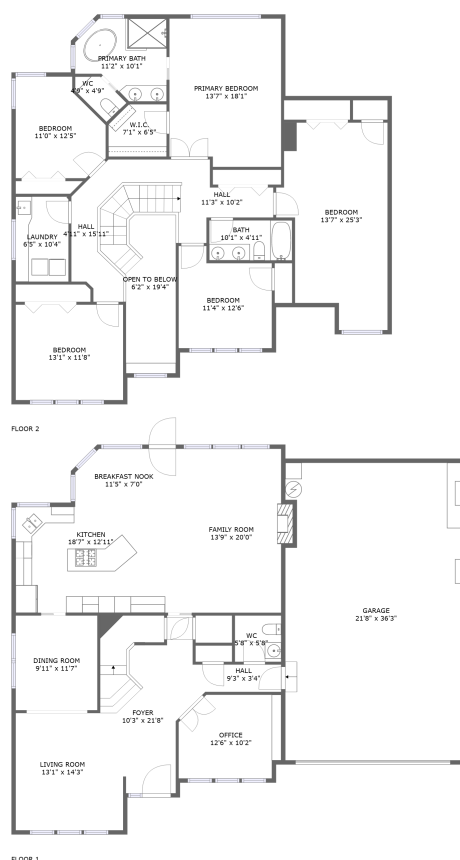


## Home report

**15255 Northwest Francesca Drive, Bethany, Portland,  
Washington County, Oregon, United States, 97229**



**Total Area: 2880 sq. ft**

Floor 1: 1337 sq. ft, Floor 2: 1543 sq. ft

Excluded: Garage 777 sq. ft, Fireplace 8 sq. ft, Open to below 112 sq. ft, Low ceiling 24 sq. ft, Walls: 212 sq. ft

## Property summary



**2**  
Floors



**5**  
Bedrooms



**2**  
Bathrooms

Home report

**15255 Northwest Francesca Drive, Bethany, Portland,  
Washington County, Oregon, United States, 97229**



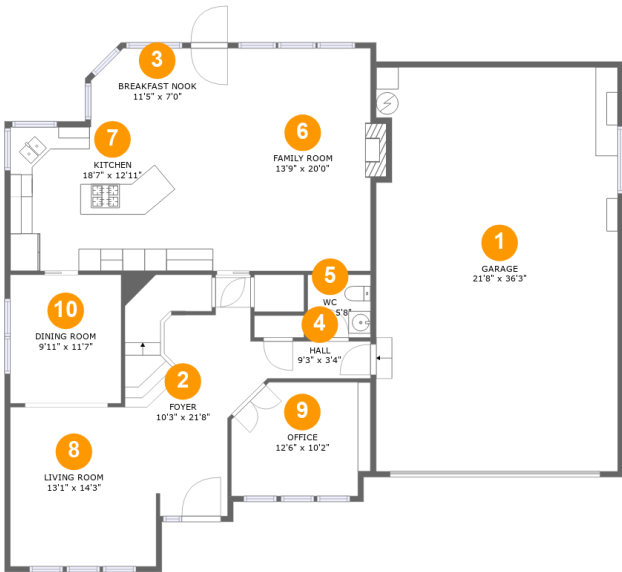
**1**  
Half baths



**1**  
Garages

Home report

15255 Northwest Francesca Drive, Bethany, Portland,  
Washington County, Oregon, United States, 97229



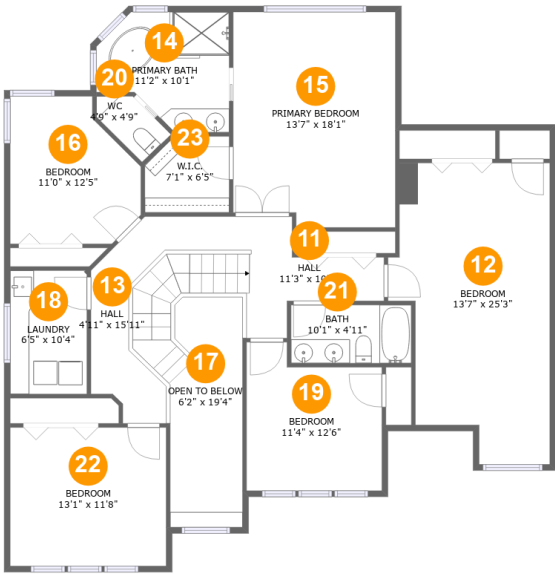
Room dimensions

Floor 1 Total:1337sqft   Excluded: 785sqft

#		Max Dimensions	sqft	Included
1	Garage	21'8" x 36'3"	777 sq. ft	No
2	Foyer	10'3" x 21'8"	211 sq. ft	Yes
3	Breakfast Nook	11'5" x 7'0"	76 sq. ft	Yes
4	Hall	9'3" x 3'4"	31 sq. ft	Yes
5	WC	5'8" x 5'8"	32 sq. ft	Yes
6	Family Room	13'9" x 20'0"	281 sq. ft	Yes
7	Kitchen	18'7" x 12'11"	240 sq. ft	Yes
8	Living Room	13'1" x 14'3"	176 sq. ft	Yes
9	Office	12'6" x 10'2"	119 sq. ft	Yes
10	Dining Room	9'11" x 11'7"	115 sq. ft	Yes

Home report

15255 Northwest Francesca Drive, Bethany, Portland,  
Washington County, Oregon, United States, 97229



Room dimensions

Floor 2 Total:1543sqft   Excluded: 136sqft

#		Max Dimensions	sqft	Included
11	Hall	11'3" x 10'2"	66 sq. ft	Yes
12	Bedroom	13'7" x 25'3"	270 sq. ft	Yes
13	Hall	4'11" x 15'11"	149 sq. ft	Yes
14	Primary Bath	11'2" x 10'1"	92 sq. ft	Yes
15	Primary Bedroom	13'7" x 18'1"	240 sq. ft	Yes
16	Bedroom	11'0" x 12'5"	117 sq. ft	Yes
17	Open To Below	6'2" x 19'4"	112 sq. ft	No
18	Laundry	6'5" x 10'4"	67 sq. ft	Yes
19	Bedroom	11'4" x 12'6"	125 sq. ft	Yes
20	WC	4'9" x 4'9"	19 sq. ft	Yes
21	Bath	10'1" x 4'11"	49 sq. ft	Yes

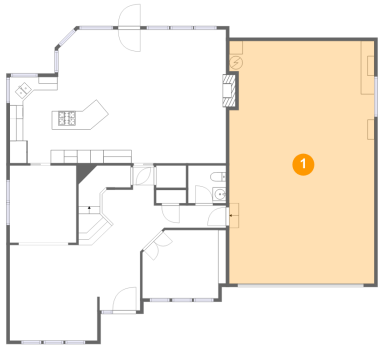
Home report

15255 Northwest Francesca Drive, Bethany, Portland,  
Washington County, Oregon, United States, 97229

#		Max Dimensions	sqft	Included
22	Bedroom	13'1" x 11'8"	152 sq. ft	Yes
23	W.I.C.	7'1" x 6'5"	42 sq. ft	Yes

15255 Northwest Francesca Drive, Bethany, Portland,  
Washington County, Oregon, United States, 97229

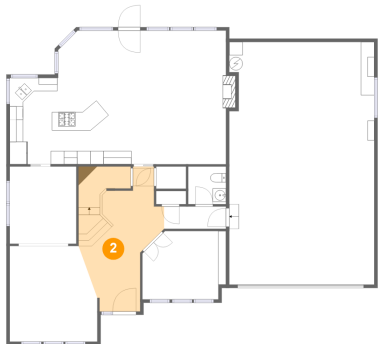
1 Floor 1 - Garage



Max Dimensions: 21'8" x 36'3"  
Calculated Area: 777 sq. ft  
Included: No

Heated: No  
Finished: No  
Enclosed: Yes  
Contiguous: Yes  
Permitted: Yes  
Wet space: No  
Addition: No  
Conversion: No

2 Floor 1 - Foyer

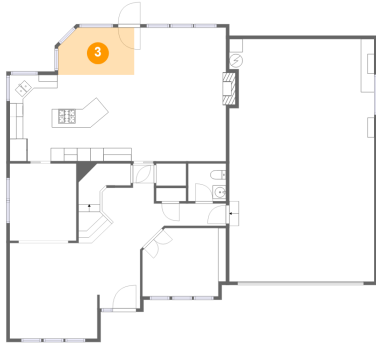


Max Dimensions: 10'3" x 21'8"  
Calculated Area: 211 sq. ft  
Included: Yes

Heated: Yes  
Finished: Yes  
Enclosed: Yes  
Contiguous: Yes  
Permitted: Yes  
Wet space: No  
Addition: No  
Conversion: No

15255 Northwest Francesca Drive, Bethany, Portland,  
Washington County, Oregon, United States, 97229

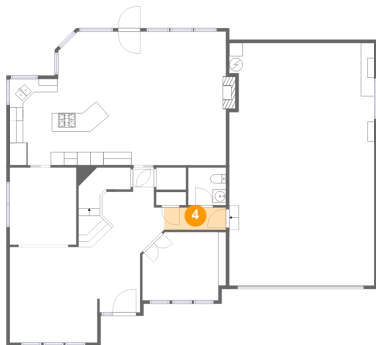
### 3 Floor 1 - Breakfast Nook



Max Dimensions: 11'5" x 7'0"  
Calculated Area: 76 sq. ft  
Included: Yes

Heated: Yes  
Finished: Yes  
Enclosed: Yes  
Contiguous: Yes  
Permitted: Yes  
Wet space: No  
Addition: No  
Conversion: No

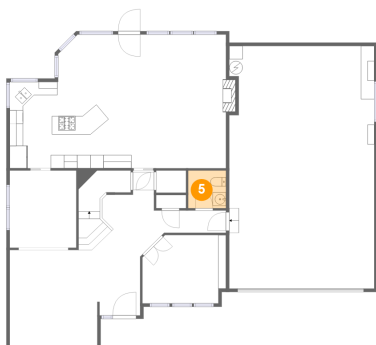
### 4 Floor 1 - Hall



Max Dimensions: 9'3" x 3'4"  
Calculated Area: 31 sq. ft  
Included: Yes

Heated: Yes  
Finished: Yes  
Enclosed: Yes  
Contiguous: Yes  
Permitted: Yes  
Wet space: No  
Addition: No  
Conversion: No

### 5 Floor 1 - WC

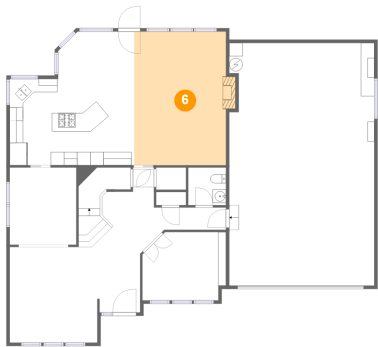


Max Dimensions: 5'8" x 5'8"  
Calculated Area: 32 sq. ft  
Included: Yes

Heated: Yes  
Finished: Yes  
Enclosed: Yes  
Contiguous: Yes  
Permitted: Yes  
Wet space: Yes  
Addition: No  
Conversion: No

15255 Northwest Francesca Drive, Bethany, Portland,  
Washington County, Oregon, United States, 97229

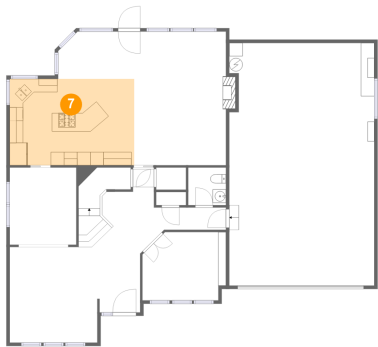
6 Floor 1 - Family Room



Max Dimensions: 13'9" x 20'0"  
Calculated Area: 281 sq. ft  
Included: Yes

Heated: Yes  
Finished: Yes  
Enclosed: Yes  
Contiguous: Yes  
Permitted: Yes  
Wet space: No  
Addition: No  
Conversion: No

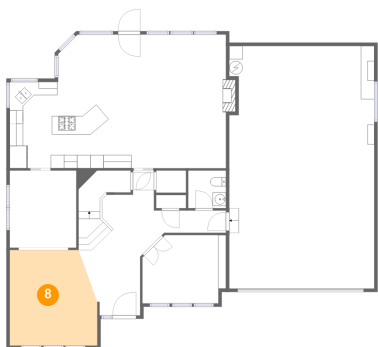
7 Floor 1 - Kitchen



Max Dimensions: 18'7" x 12'11"  
Calculated Area: 240 sq. ft  
Included: Yes

Heated: Yes  
Finished: Yes  
Enclosed: Yes  
Contiguous: Yes  
Permitted: Yes  
Wet space: No  
Addition: No  
Conversion: No

8 Floor 1 - Living Room



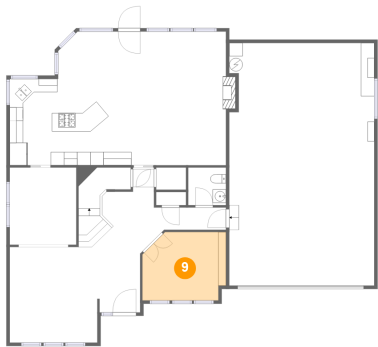
Max Dimensions: 13'1" x 14'3"  
Calculated Area: 176 sq. ft  
Included: Yes

Heated: Yes  
Finished: Yes  
Enclosed: Yes  
Contiguous: Yes  
Permitted: Yes  
Wet space: No  
Addition: No  
Conversion: No



15255 Northwest Francesca Drive, Bethany, Portland,  
Washington County, Oregon, United States, 97229

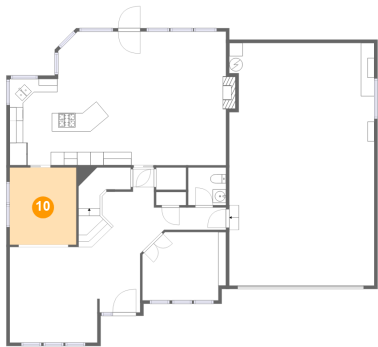
9 Floor 1 - Office



Max Dimensions: 12'6" x 10'2"  
Calculated Area: 119 sq. ft  
Included: Yes

Heated: Yes  
Finished: Yes  
Enclosed: Yes  
Contiguous: Yes  
Permitted: Yes  
Wet space: No  
Addition: No  
Conversion: No

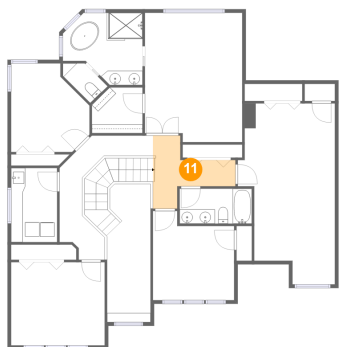
10 Floor 1 - Dining Room



Max Dimensions: 9'11" x 11'7"  
Calculated Area: 115 sq. ft  
Included: Yes

Heated: Yes  
Finished: Yes  
Enclosed: Yes  
Contiguous: Yes  
Permitted: Yes  
Wet space: No  
Addition: No  
Conversion: No

11 Floor 2 - Hall

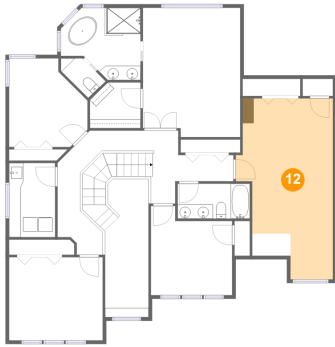


Max Dimensions: 11'3" x 10'2"  
Calculated Area: 66 sq. ft  
Included: Yes

Heated: Yes  
Finished: Yes  
Enclosed: Yes  
Contiguous: Yes  
Permitted: Yes  
Wet space: No  
Addition: No  
Conversion: No

15255 Northwest Francesca Drive, Bethany, Portland,  
Washington County, Oregon, United States, 97229

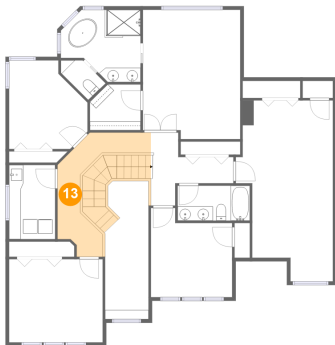
## 12 Floor 2 - Bedroom



Max Dimensions: 13'7" x 25'3"  
Calculated Area: 270 sq. ft  
Included: Yes

Heated: Yes  
Finished: Yes  
Enclosed: Yes  
Contiguous: Yes  
Permitted: Yes  
Wet space: No  
Addition: No  
Conversion: No

## 13 Floor 2 - Hall



Max Dimensions: 4'11" x 15'11"  
Calculated Area: 149 sq. ft  
Included: Yes

Heated: Yes  
Finished: Yes  
Enclosed: Yes  
Contiguous: Yes  
Permitted: Yes  
Wet space: No  
Addition: No  
Conversion: No

## 14 Floor 2 - Primary Bath

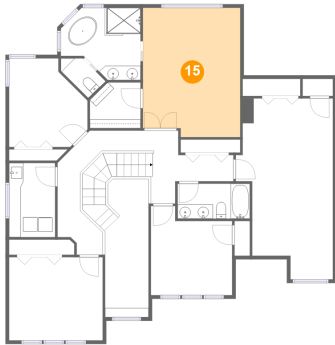


Max Dimensions: 11'2" x 10'1"  
Calculated Area: 92 sq. ft  
Included: Yes

Heated: Yes  
Finished: Yes  
Enclosed: Yes  
Contiguous: Yes  
Permitted: Yes  
Wet space: Yes  
Addition: No  
Conversion: No

15255 Northwest Francesca Drive, Bethany, Portland,  
Washington County, Oregon, United States, 97229

## 15 Floor 2 - Primary Bedroom



Max Dimensions: 13'7" x 18'1"  
Calculated Area: 240 sq. ft  
Included: Yes

Heated: Yes  
Finished: Yes  
Enclosed: Yes  
Contiguous: Yes  
Permitted: Yes  
Wet space: No  
Addition: No  
Conversion: No

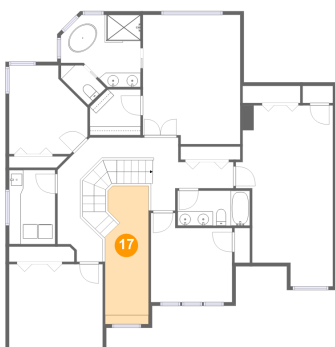
## 16 Floor 2 - Bedroom



Max Dimensions: 11'0" x 12'5"  
Calculated Area: 117 sq. ft  
Included: Yes

Heated: Yes  
Finished: Yes  
Enclosed: Yes  
Contiguous: Yes  
Permitted: Yes  
Wet space: No  
Addition: No  
Conversion: No

## 17 Floor 2 - Open To Below

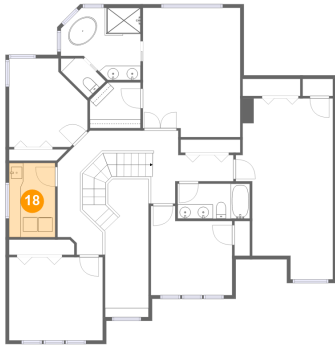


Max Dimensions: 6'2" x 19'4"  
Calculated Area: 112 sq. ft  
Included: No

Heated: No  
Finished: No  
Enclosed: No  
Contiguous: Yes  
Permitted: No  
Wet space: No  
Addition: No  
Conversion: No

15255 Northwest Francesca Drive, Bethany, Portland,  
Washington County, Oregon, United States, 97229

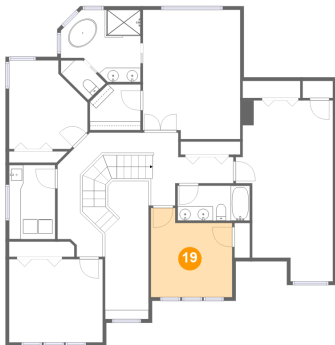
## 18 Floor 2 - Laundry



Max Dimensions: 6'5" x 10'4"  
Calculated Area: 67 sq. ft  
Included: Yes

Heated: Yes  
Finished: Yes  
Enclosed: Yes  
Contiguous: Yes  
Permitted: Yes  
Wet space: No  
Addition: No  
Conversion: No

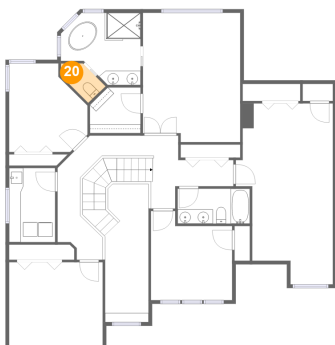
## 19 Floor 2 - Bedroom



Max Dimensions: 11'4" x 12'6"  
Calculated Area: 125 sq. ft  
Included: Yes

Heated: Yes  
Finished: Yes  
Enclosed: Yes  
Contiguous: Yes  
Permitted: Yes  
Wet space: No  
Addition: No  
Conversion: No

## 20 Floor 2 - WC



Max Dimensions: 4'9" x 4'9"  
Calculated Area: 19 sq. ft  
Included: Yes

Heated: Yes  
Finished: Yes  
Enclosed: Yes  
Contiguous: Yes  
Permitted: Yes  
Wet space: Yes  
Addition: No  
Conversion: No

15255 Northwest Francesca Drive, Bethany, Portland,  
Washington County, Oregon, United States, 97229

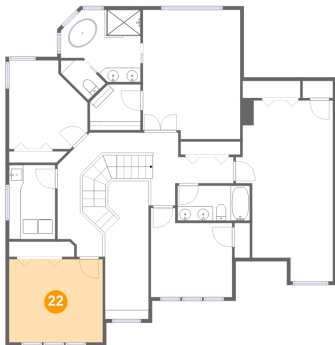
## 21 Floor 2 - Bath



Max Dimensions: 10'1" x 4'11"  
Calculated Area: 49 sq. ft  
Included: Yes

Heated: Yes  
Finished: Yes  
Enclosed: Yes  
Contiguous: Yes  
Permitted: Yes  
Wet space: Yes  
Addition: No  
Conversion: No

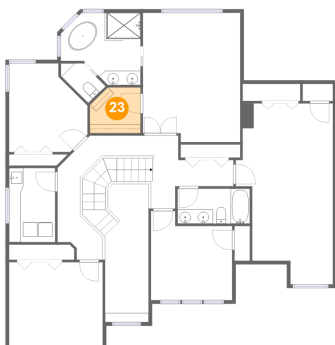
## 22 Floor 2 - Bedroom



Max Dimensions: 13'1" x 11'8"  
Calculated Area: 152 sq. ft  
Included: Yes

Heated: Yes  
Finished: Yes  
Enclosed: Yes  
Contiguous: Yes  
Permitted: Yes  
Wet space: No  
Addition: No  
Conversion: No

## 23 Floor 2 - W.I.C.



Max Dimensions: 7'1" x 6'5"  
Calculated Area: 42 sq. ft  
Included: Yes

Heated: Yes  
Finished: Yes  
Enclosed: Yes  
Contiguous: Yes  
Permitted: Yes  
Wet space: No  
Addition: No  
Conversion: No