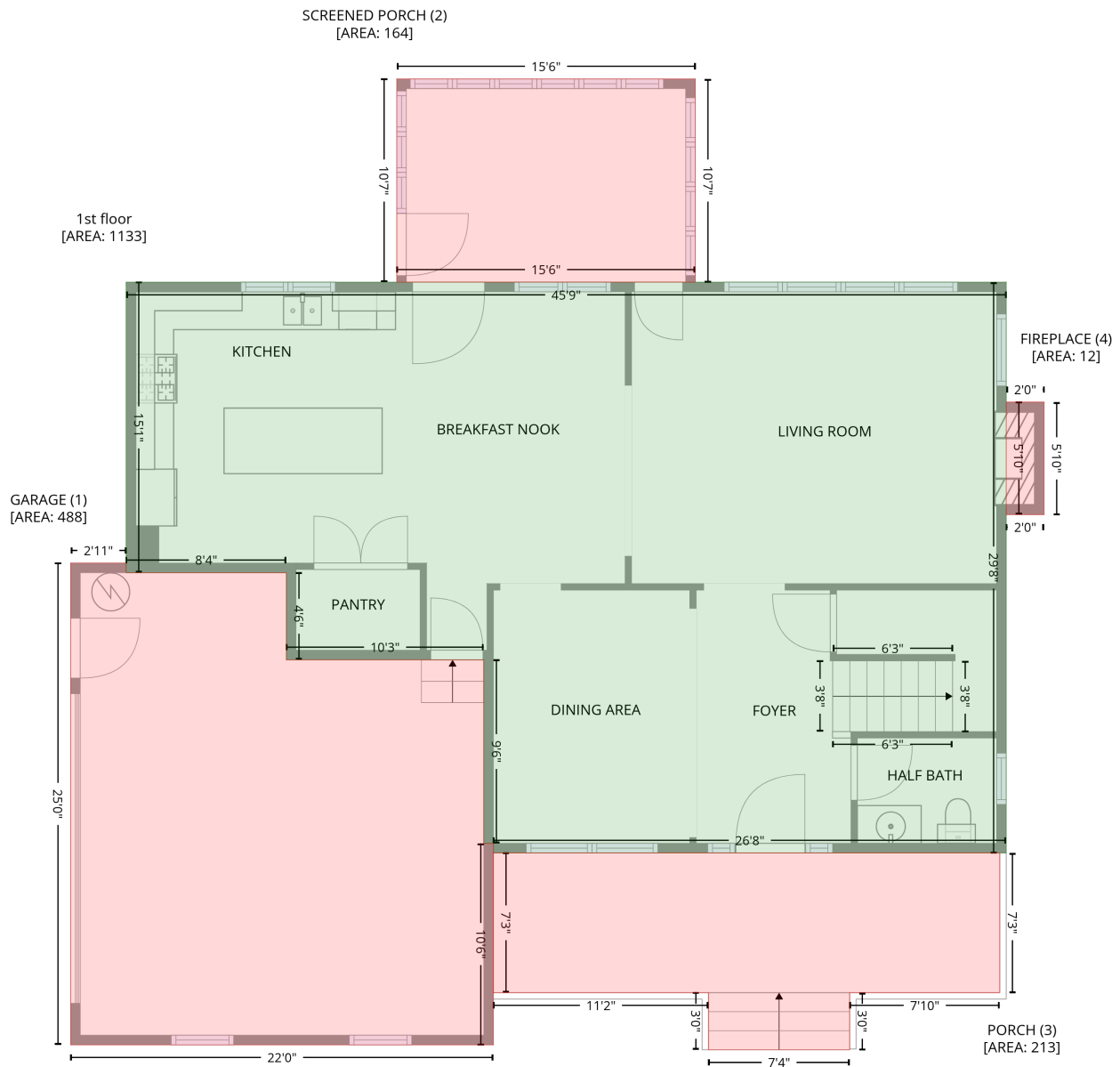


1324 Emerson Cook Road, Pittsboro, Chatham County, North Carolina, United States, 27312

Gross Living Area: 2572 sq. ft

Level 1



Space	Area (sq. ft)	Calculation
1st floor (Living area)	1133	Coordinate Polygon Area Algorithm using inches $-((572.8 + 572.8) * (191.2 - 547.2) + (572.8 + 252.8) * (547.2 - 547.2) + (252.8 + 252.8) * (547.2 - 541.2) + (252.8 + 246.8) * (541.2 - 541.2) + (246.8 + 246.8) * (541.2 - 426.8) + (246.8 + 123.5) * (426.8 - 426.8) + (123.5 + 123.5) * (426.8 - 372.4) + (123.5 + 23.5) * (372.4 - 372.4) + (23.5 + 23.5) * (372.4 - 191.2) + (23.5 + 572.8) * (191.2 - 191.2)) * 0.5 * 0.00694$

1324 Emerson Cook Road, Pittsboro, Chatham County, North Carolina, United States, 27312

Gross Living Area: 2572 sq. ft

Level 1

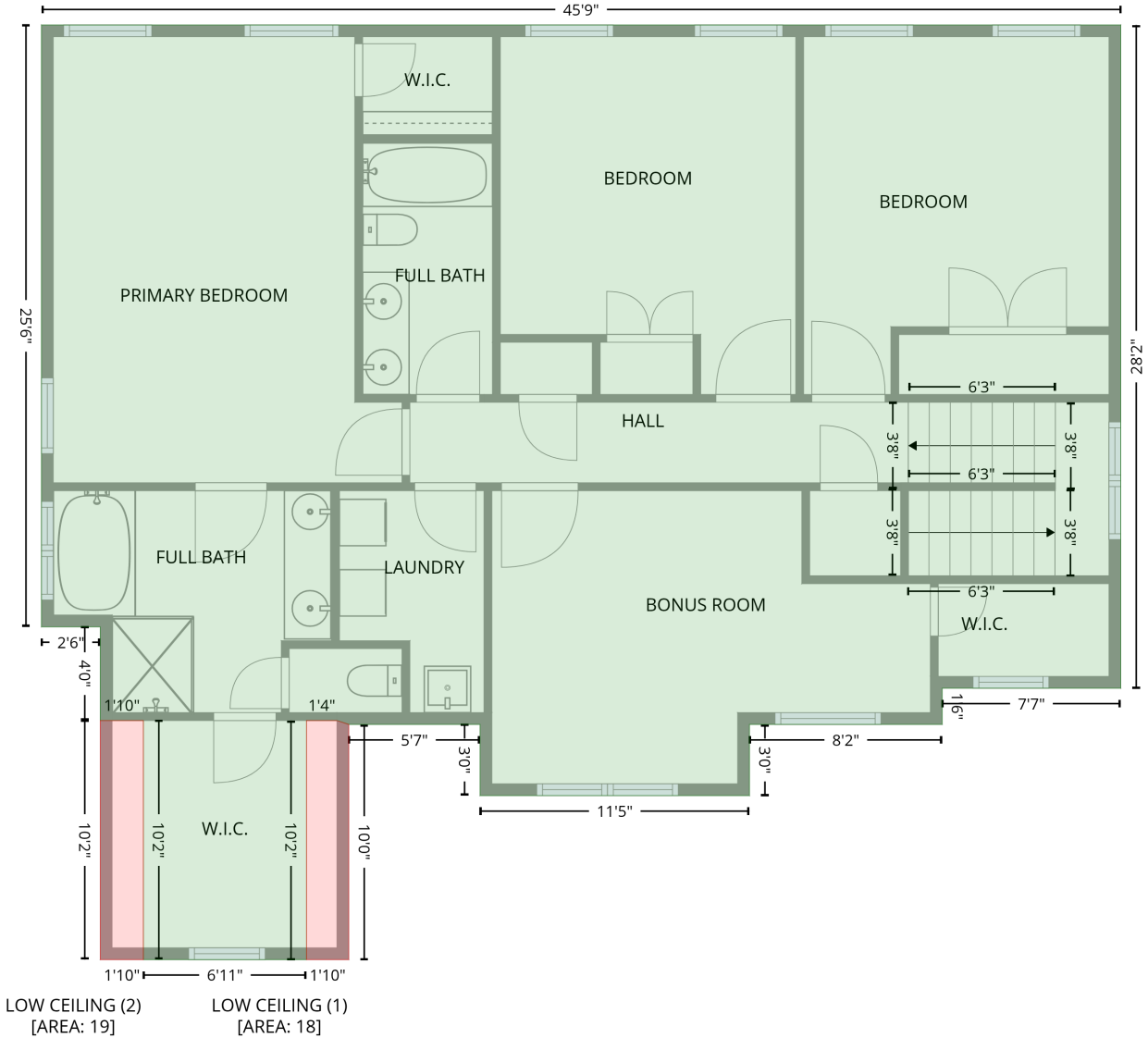
Space	Area (sq. ft)	Calculation <small>Coordinate Polygon Area Algorithm using inches</small>
GARAGE (Non-living area)	488	$-\left((23.5 + 23.5) * (366.4 - 372.4) + (23.5 + 123.5) * (372.4 - 372.4) + (123.5 + 123.5) * (372.4 - 426.8) + (123.5 + 246.8) * (426.8 - 426.8) + (246.8 + 246.8) * (426.8 - 541.2) + (246.8 + 252.8) * (541.2 - 541.2) + (252.8 + 252.8) * (541.2 - 666.9) + (252.8 + -11.1) * (666.9 - 666.9) + (-11.1 + -11.1) * (666.9 - 366.4) + (-11.1 + 23.5) * (366.4 - 366.4)\right) * 0.5 * 0.00694$
SCREENED PORCH (Non-living area)	164	$-\left((378.8 + 378.8) * (64.5 - 191.2) + (378.8 + 192.4) * (191.2 - 191.2) + (192.4 + 192.4) * (191.2 - 64.5) + (192.4 + 378.8) * (64.5 - 64.5)\right) * 0.5 * 0.00694$
PORCH (Non-living area)	213	$-\left((568.8 + 568.8) * (547.2 - 634.4) + (568.8 + 475.1) * (634.4 - 634.4) + (475.1 + 475.1) * (634.4 - 670) + (475.1 + 387) * (670 - 670) + (387 + 387) * (670 - 634.4) + (387 + 252.8) * (634.4 - 634.4) + (252.8 + 252.8) * (634.4 - 547.2) + (252.8 + 568.8) * (547.2 - 547.2)\right) * 0.5 * 0.00694$
FIREPLACE (Non-living area)	12	$-\left((596.5 + 596.5) * (266 - 336.2) + (596.5 + 572.8) * (336.2 - 336.2) + (572.8 + 572.8) * (336.2 - 266) + (572.8 + 596.5) * (266 - 266)\right) * 0.5 * 0.00694$

1324 Emerson Cook Road, Pittsboro, Chatham County, North Carolina, United States, 27312

Gross Living Area: 2572 sq. ft

Level 2

2nd floor
[AREA: 1439]



Space	Area (sq. ft)	Calculation
2nd floor (Living area)	1439	Coordinate Polygon Area Algorithm using inches $-((572.8 + 572.8) * (191.2 - 528.8) + (572.8 + 481.9) * (528.8 - 528.8) + (481.9 + 481.9) * (528.8 - 547.2) + (481.9 + 383.9) * (547.2 - 547.2) + (383.9 + 383.9) * (547.2 - 583.5) + (383.9 + 246.8) * (583.5 - 583.5) + (246.8 + 246.8) * (583.5 - 547.2) + (246.8 + 179.9) * (547.2 - 547.2) + (179.9 + 173.9) * (547.2 - 545.2) + (173.9 + 158.4) * (545.2 - 545.2) + (158.4 + 158.4) * (545.2 - 666.9) + (158.4 + 75.4) * (666.9 - 666.9) + (75.4 + 75.4) * (666.9 - 545.2) + (75.4 + 53.4) * (545.2 - 545.2) + (53.4 + 53.4) * (545.2 - 497.6) + (53.4 + 23.5) * (497.6 - 497.6) + (23.5 + 23.5) * (497.6 - 191.2) + (23.5 + 572.8) * (191.2 - 191.2)) * 0.5 * 0.00694$

1324 Emerson Cook Road, Pittsboro, Chatham County, North Carolina, United States, 27312

Gross Living Area: 2572 sq. ft

Level 2

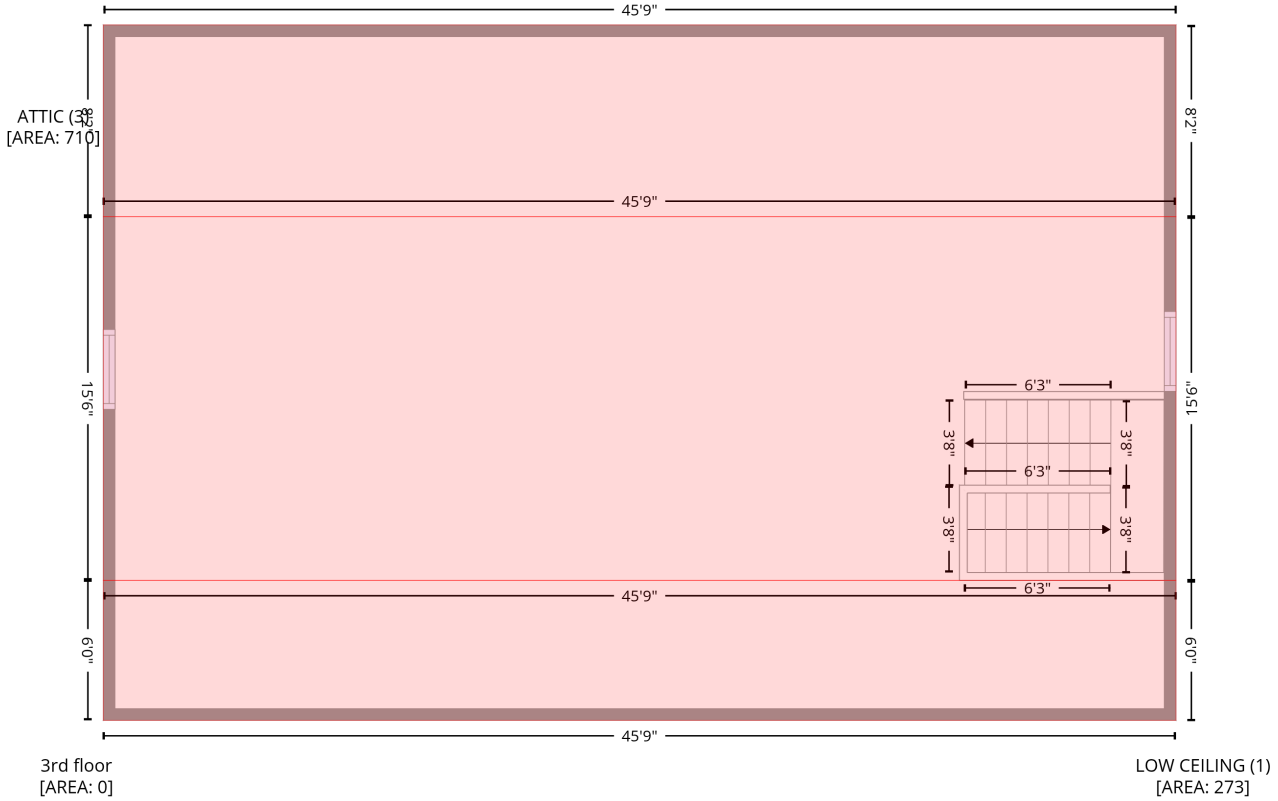
Space	Area (sq. ft)	Calculation <small>Coordinate Polygon Area Algorithm using inches</small>
LOW CEILING (Non-living area)	18	$-\left((173.9 + 179.9) * (545.2 - 547.2) + (179.9 + 179.9) * (547.2 - 666.9) + (179.9 + 158.4) * (666.9 - 666.9) + (158.4 + 158.4) * (666.9 - 545.2) + (158.4 + 173.9) * (545.2 - 545.2)\right) * 0.5 * 0.00694$
LOW CEILING (Non-living area)	19	$-\left((75.4 + 75.4) * (545.2 - 666.9) + (75.4 + 53.4) * (666.9 - 666.9) + (53.4 + 53.4) * (666.9 - 545.2) + (53.4 + 75.4) * (545.2 - 545.2)\right) * 0.5 * 0.00694$

1324 Emerson Cook Road, Pittsboro, Chatham County, North Carolina, United States, 27312

Gross Living Area: 2572 sq. ft

Level 3

LOW CEILING (2)
[AREA: 374]



Space

Area (sq. ft)

Calculation Coordinate Polygon Area Algorithm using inches

Space	Area (sq. ft)	Calculation
LOW CEILING (Non-living area)	273	$-((572.8 + 572.8) * (475.6 - 547.2) + (572.8 + 23.5) * (547.2 - 547.2) + (23.5 + 23.5) * (547.2 - 475.6) + (23.5 + 572.8) * (475.6 - 475.6)) * 0.5 * 0.00694$
LOW CEILING (Non-living area)	374	$-((572.8 + 572.8) * (191.2 - 289.4) + (572.8 + 23.5) * (289.4 - 289.4) + (23.5 + 23.5) * (289.4 - 191.2) + (23.5 + 572.8) * (191.2 - 191.2)) * 0.5 * 0.00694$
ATTIC (Non-living area)	710	$-((572.8 + 572.8) * (289.4 - 475.6) + (572.8 + 23.5) * (475.6 - 475.6) + (23.5 + 23.5) * (475.6 - 289.4) + (23.5 + 572.8) * (289.4 - 289.4)) * 0.5 * 0.00694$