

# Home data report

## 426 Plena Ln, Kodak, TN, US




**Total Area: 3029 sq. ft**

Basement: 1164 sq. ft, 1st Floor: 1865 sq. ft

Excluded: Basement 593 sq. ft, Garage 430 sq. ft, Walls: 234 sq. ft

### Property summary

 **2** Floors

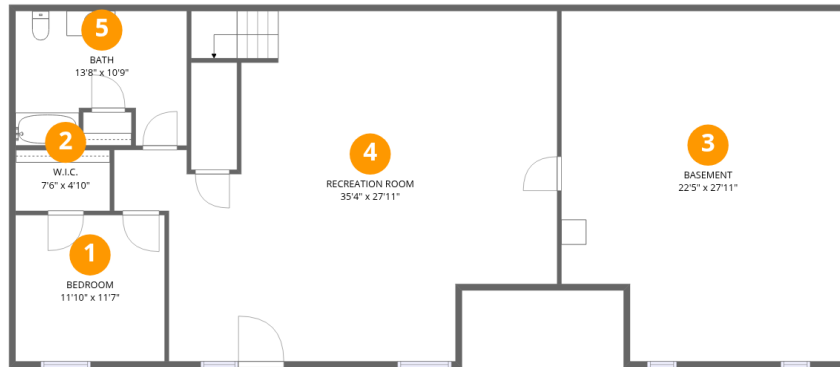
 **4** Bedrooms

 **3** Bathrooms

 **1** Garages

# Home data report

## 426 Plena Ln, Kodak, TN, US



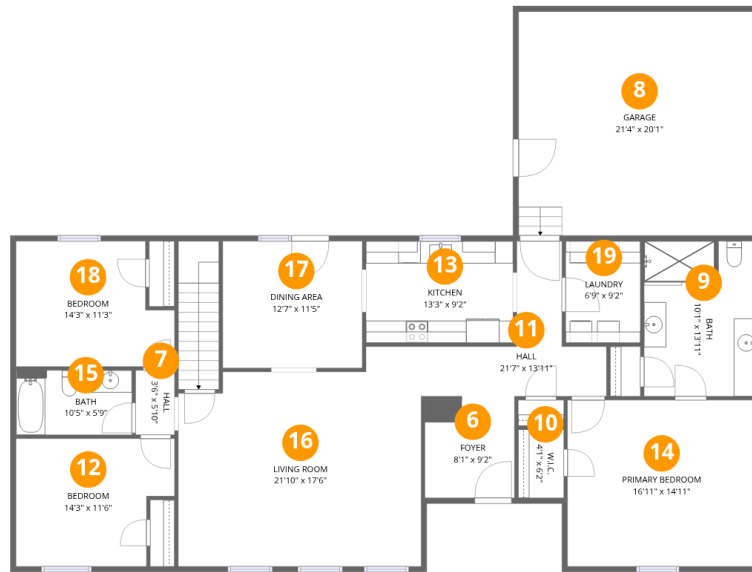
### Room dimensions

Floor 1 Below grade

Total: 1164 sqft

Excluded: 593 sqft

#		Dimensions	sqft	Counted as living area
1	Bedroom	11'10" x 11'7"	139 sq. ft	Yes
2	W.I.C.	7'6" x 4'10"	37 sq. ft	Yes
3	Basement	22'5" x 27'11"	593 sq. ft	No
4	Recreation Room	35'4" x 27'11"	778 sq. ft	Yes
5	Bath	13'8" x 10'9"	133 sq. ft	Yes



## Room dimensions

Floor 2

Total: 1865sqft

Excluded: 430sqft

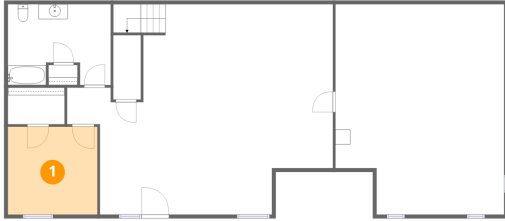
#		Dimensions	sqft	Counted as living area
6	Foyer	8'1" x 9'2"	72 sq. ft	Yes
7	Hall	3'6" x 5'10"	20 sq. ft	Yes
8	Garage	21'4" x 20'1"	430 sq. ft	No
9	Bath	10'1" x 13'11"	139 sq. ft	Yes
10	W.I.C.	4'1" x 6'2"	25 sq. ft	Yes
11	Hall	21'7" x 13'11"	130 sq. ft	Yes
12	Bedroom	14'3" x 11'6"	148 sq. ft	Yes
13	Kitchen	13'3" x 9'2"	121 sq. ft	Yes
14	Primary Bedroom	16'11" x 14'11"	254 sq. ft	Yes
15	Bath	10'5" x 5'9"	60 sq. ft	Yes
16	Living Room	21'10" x 17'6"	369 sq. ft	Yes

Home data report

**426 Plena Ln,Kodak,TN,US**

#		Dimensions	sqft	Counted as living area
17	Dining Area	12'7" x 11'5"	143 sq. ft	Yes
18	Bedroom	14'3" x 11'3"	145 sq. ft	Yes
19	Laundry	6'9" x 9'2"	61 sq. ft	Yes

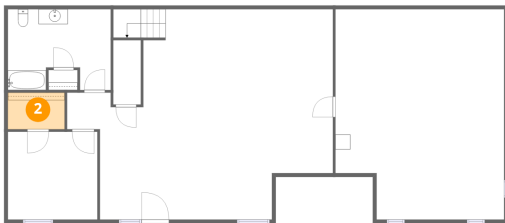
## 1 Floor 1 - Bedroom



Dimensions: 11'10" x 11'7"  
Area: 139 sq. ft  
Counted as living area: Yes

Heated: Yes  
Finished: Yes  
Enclosed: Yes  
Contiguous: Yes  
Permitted: Yes  
Wet space: No  
Addition: No  
Conversion: No

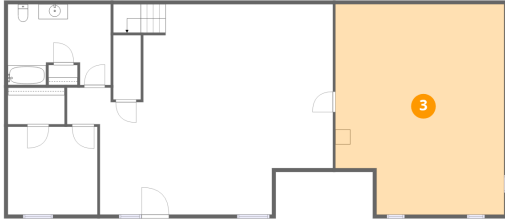
## 2 Floor 1 - W.I.C.



Dimensions: 7'6" x 4'10"  
Area: 37 sq. ft  
Counted as living area: Yes

Heated: Yes  
Finished: Yes  
Enclosed: Yes  
Contiguous: Yes  
Permitted: Yes  
Wet space: No  
Addition: No  
Conversion: No

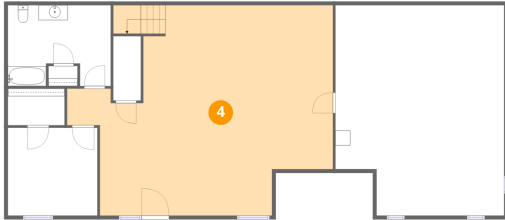
### 3 Floor 1 - Basement



Dimensions: 22'5" x 27'11"  
Area: 593 sq. ft  
Counted as living area: No

Heated: Yes  
Finished: No  
Enclosed: Yes  
Contiguous: Yes  
Permitted: Yes  
Wet space: No  
Addition: No  
Conversion: No

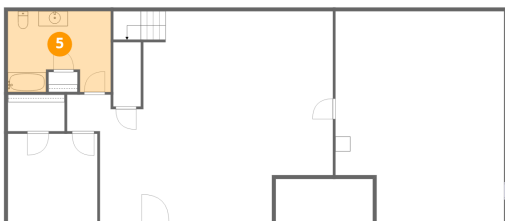
### 4 Floor 1 - Recreation Room



Dimensions: 35'4" x 27'11"  
Area: 778 sq. ft  
Counted as living area: Yes

Heated: Yes  
Finished: Yes  
Enclosed: Yes  
Contiguous: Yes  
Permitted: Yes  
Wet space: No  
Addition: No  
Conversion: No

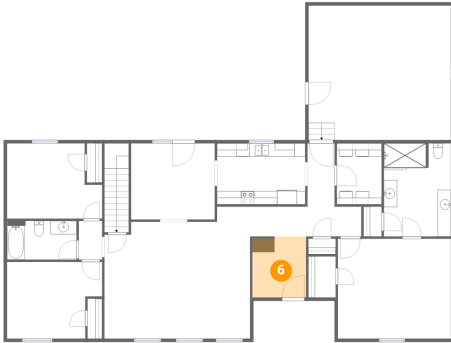
### 5 Floor 1 - Bath



Dimensions: 13'8" x 10'9"  
Area: 133 sq. ft  
Counted as living area: Yes

Heated: Yes  
Finished: Yes  
Enclosed: Yes  
Contiguous: Yes  
Permitted: Yes  
Wet space: Yes  
Addition: No  
Conversion: No

## 6 Floor 2 - Foyer



Dimensions: 8'1" x 9'2"  
Area: 72 sq. ft  
Counted as living area: Yes

Heated: Yes  
Finished: Yes  
Enclosed: Yes  
Contiguous: Yes  
Permitted: Yes  
Wet space: No  
Addition: No  
Conversion: No

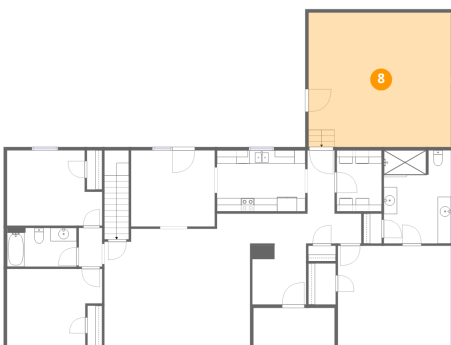
## 7 Floor 2 - Hall



Dimensions: 3'6" x 5'10"  
Area: 20 sq. ft  
Counted as living area: Yes

Heated: Yes  
Finished: Yes  
Enclosed: Yes  
Contiguous: Yes  
Permitted: Yes  
Wet space: No  
Addition: No  
Conversion: No

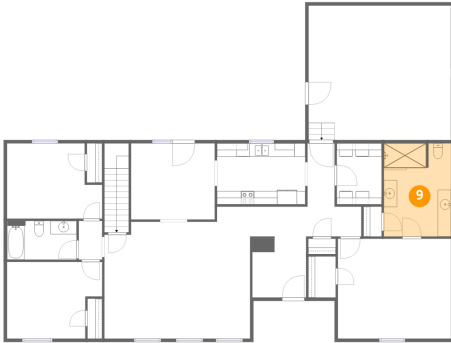
## 8 Floor 2 - Garage



Dimensions: 21'4" x 20'1"  
Area: 430 sq. ft  
Counted as living area: No

Heated: No  
Finished: No  
Enclosed: Yes  
Contiguous: Yes  
Permitted: Yes  
Wet space: No  
Addition: No  
Conversion: No

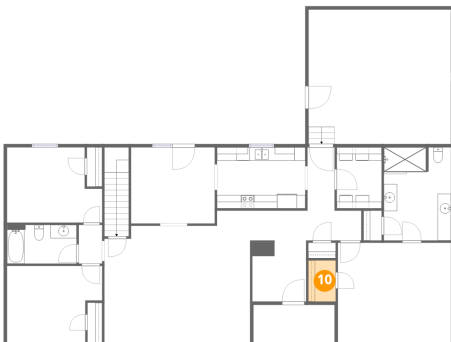
**9** Floor 2 - Bath



Dimensions: 10'1" x 13'11"  
Area: 139 sq. ft  
Counted as living area: Yes

Heated: Yes  
Finished: Yes  
Enclosed: Yes  
Contiguous: Yes  
Permitted: Yes  
Wet space: Yes  
Addition: No  
Conversion: No

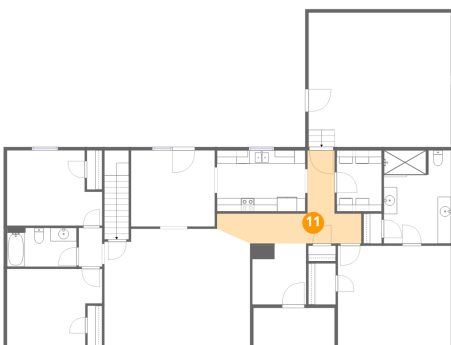
**10** Floor 2 - W.I.C.



Dimensions: 4'1" x 6'2"  
Area: 25 sq. ft  
Counted as living area: Yes

Heated: Yes  
Finished: Yes  
Enclosed: Yes  
Contiguous: Yes  
Permitted: Yes  
Wet space: No  
Addition: No  
Conversion: No

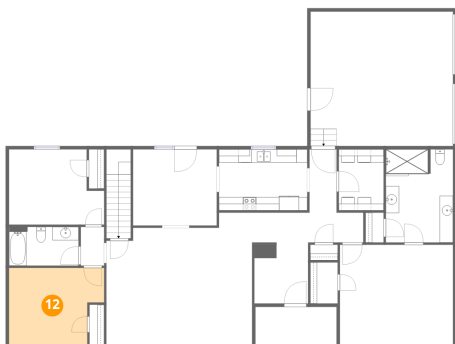
**11** Floor 2 - Hall



Dimensions: 21'7" x 13'11"  
Area: 130 sq. ft  
Counted as living area: Yes

Heated: Yes  
Finished: Yes  
Enclosed: Yes  
Contiguous: Yes  
Permitted: Yes  
Wet space: No  
Addition: No  
Conversion: No

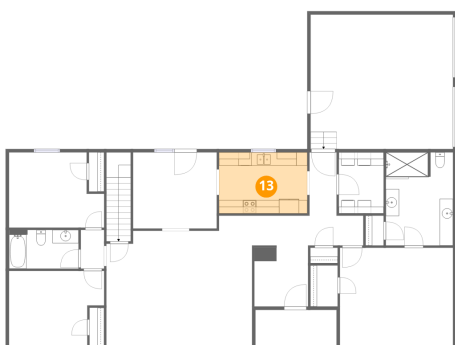
## 12 Floor 2 - Bedroom



Dimensions: 14'3" x 11'6"  
Area: 148 sq. ft  
Counted as living area: Yes

Heated: Yes  
Finished: Yes  
Enclosed: Yes  
Contiguous: Yes  
Permitted: Yes  
Wet space: No  
Addition: No  
Conversion: No

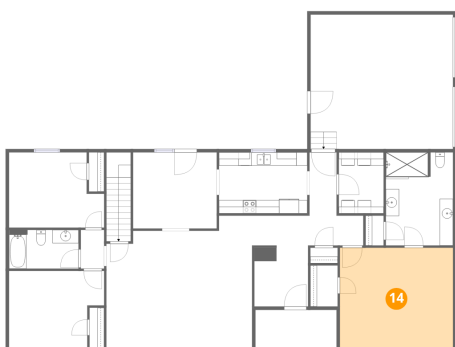
## 13 Floor 2 - Kitchen



Dimensions: 13'3" x 9'2"  
Area: 121 sq. ft  
Counted as living area: Yes

Heated: Yes  
Finished: Yes  
Enclosed: Yes  
Contiguous: Yes  
Permitted: Yes  
Wet space: No  
Addition: No  
Conversion: No

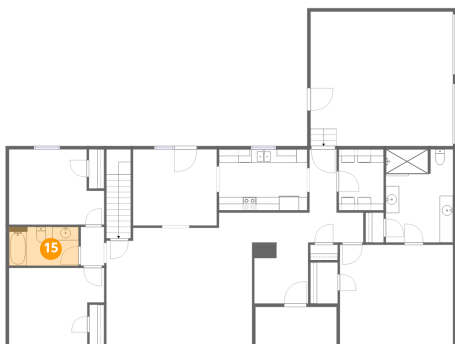
## 14 Floor 2 - Primary Bedroom



Dimensions: 16'11" x 14'11"  
Area: 254 sq. ft  
Counted as living area: Yes

Heated: Yes  
Finished: Yes  
Enclosed: Yes  
Contiguous: Yes  
Permitted: Yes  
Wet space: No  
Addition: No  
Conversion: No

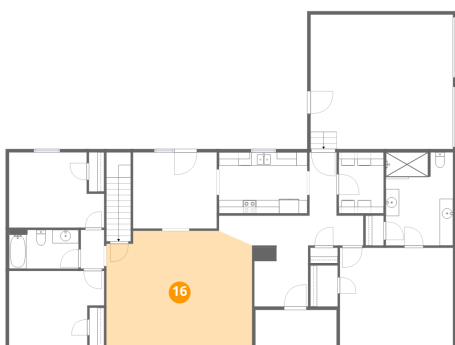
**15** Floor 2 - Bath



Dimensions: 10'5" x 5'9"  
Area: 60 sq. ft  
Counted as living area: Yes

Heated: Yes  
Finished: Yes  
Enclosed: Yes  
Contiguous: Yes  
Permitted: Yes  
Wet space: Yes  
Addition: No  
Conversion: No

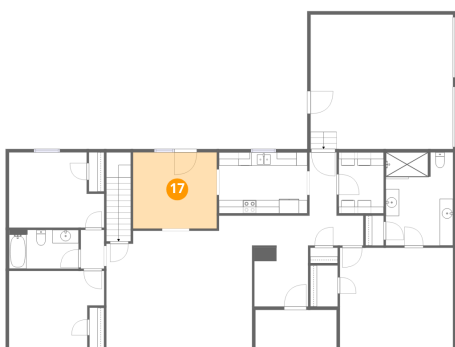
**16** Floor 2 - Living Room



Dimensions: 21'10" x 17'6"  
Area: 369 sq. ft  
Counted as living area: Yes

Heated: Yes  
Finished: Yes  
Enclosed: Yes  
Contiguous: Yes  
Permitted: Yes  
Wet space: No  
Addition: No  
Conversion: No

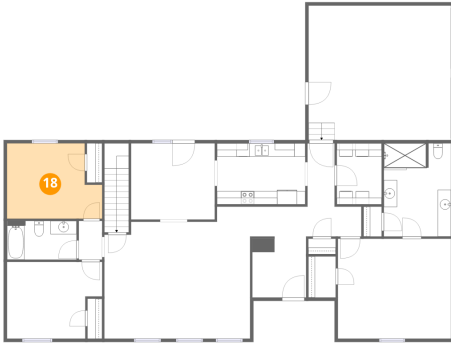
**17** Floor 2 - Dining Area



Dimensions: 12'7" x 11'5"  
Area: 143 sq. ft  
Counted as living area: Yes

Heated: Yes  
Finished: Yes  
Enclosed: Yes  
Contiguous: Yes  
Permitted: Yes  
Wet space: No  
Addition: No  
Conversion: No

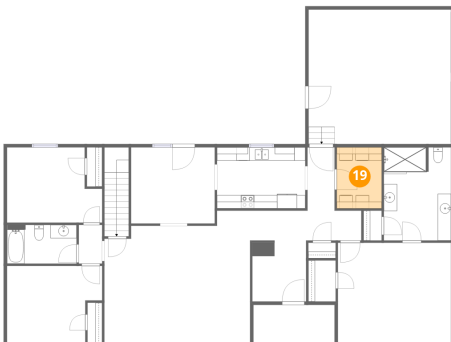
**18** Floor 2 - Bedroom



Dimensions: 14'3" x 11'3"  
Area: 145 sq. ft  
Counted as living area: Yes

Heated: Yes  
Finished: Yes  
Enclosed: Yes  
Contiguous: Yes  
Permitted: Yes  
Wet space: No  
Addition: No  
Conversion: No

**19** Floor 2 - Laundry



Dimensions: 6'9" x 9'2"  
Area: 61 sq. ft  
Counted as living area: Yes

Heated: Yes  
Finished: Yes  
Enclosed: Yes  
Contiguous: Yes  
Permitted: Yes  
Wet space: No  
Addition: No  
Conversion: No