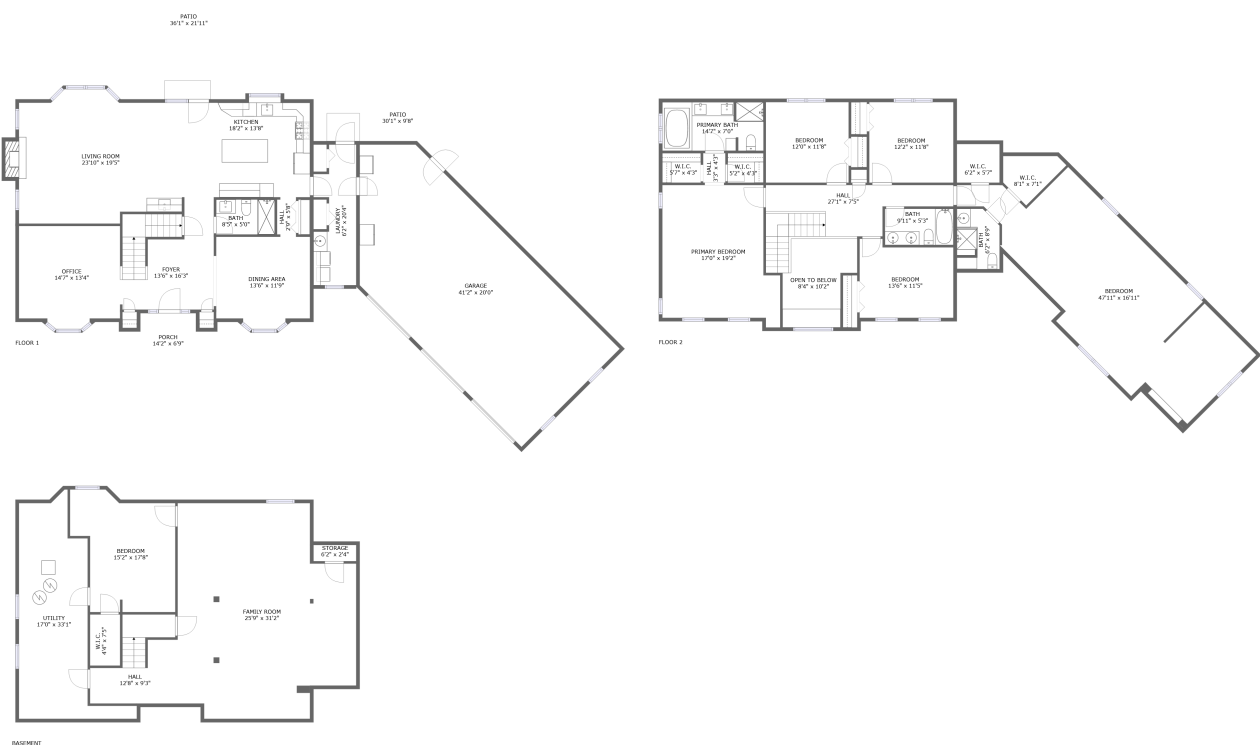


Home report

477 Mallard Court, Bloomingdale, DuPage County, Illinois,
United States, 60108



Total Area: 4443 sq. ft
Below Ground: 1112 sq. ft, Floor 2: 1457 sq. ft, Floor 3: 1874 sq. ft
Excluded: Utility 310 sq. ft, Storage 14 sq. ft, Garage 830 sq. ft, Patio 1099 sq. ft, Porch 79 sq. ft, Embeddedwindow 23 sq. ft, Fireplace 12 sq. ft, Low ceiling 130 sq. ft, Open to below 113 sq. ft, Walls: 344 sq. ft

Property summary

**3**
Floors

**6**
Bedrooms

**3**
Bathrooms

Home report

**477 Mallard Court, Bloomingdale, DuPage County, Illinois,
United States, 60108**



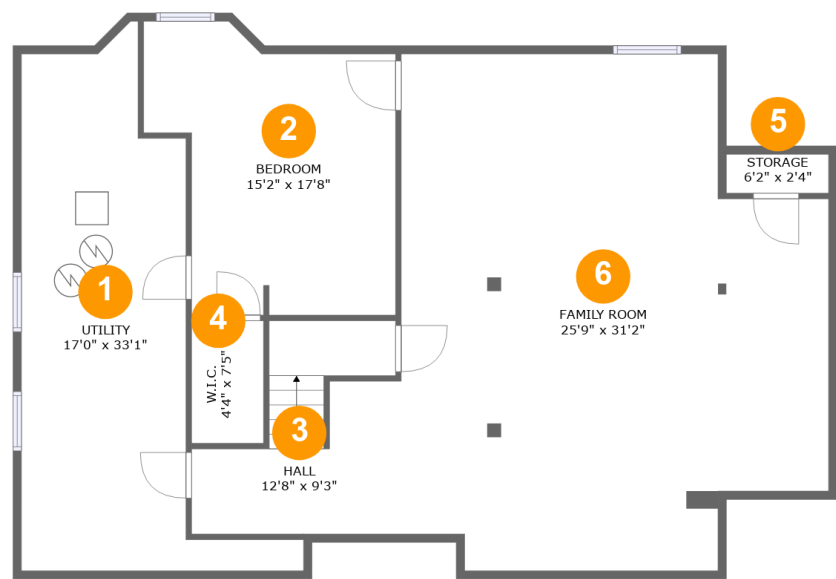
1
Half baths



1
Garages

Home report

477 Mallard Court, Bloomingdale, DuPage County, Illinois,
United States, 60108



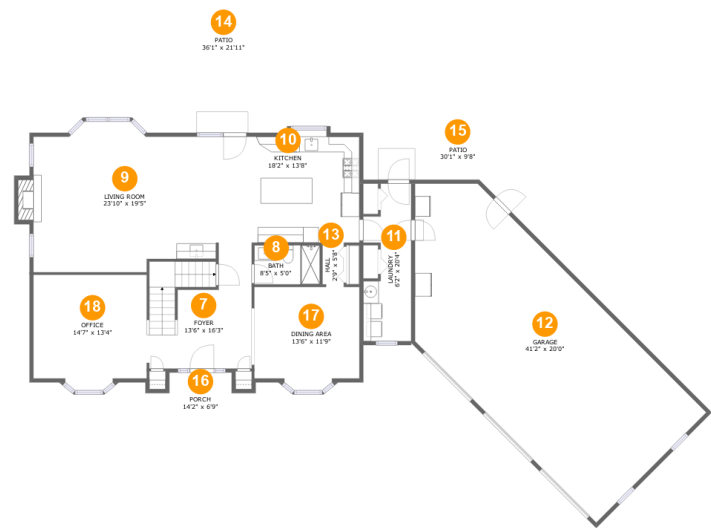
Room dimensions

Floor 1 Below ground Total:1112sqft Excluded: 324sqft

#		Max Dimensions	sqft	Included
1	Utility	17'0" x 33'1"	310 sq. ft	No
2	Bedroom	15'2" x 17'8"	219 sq. ft	Yes
3	Hall	12'8" x 9'3"	122 sq. ft	Yes
4	W.I.C.	4'4" x 7'5"	32 sq. ft	Yes
5	Storage	6'2" x 2'4"	14 sq. ft	No
6	Family Room	25'9" x 31'2"	704 sq. ft	Yes

Home report

477 Mallard Court, Bloomingdale, DuPage County, Illinois,
United States, 60108



Room dimensions

Floor 2 Total:1457sqft Excluded: 2043sqft

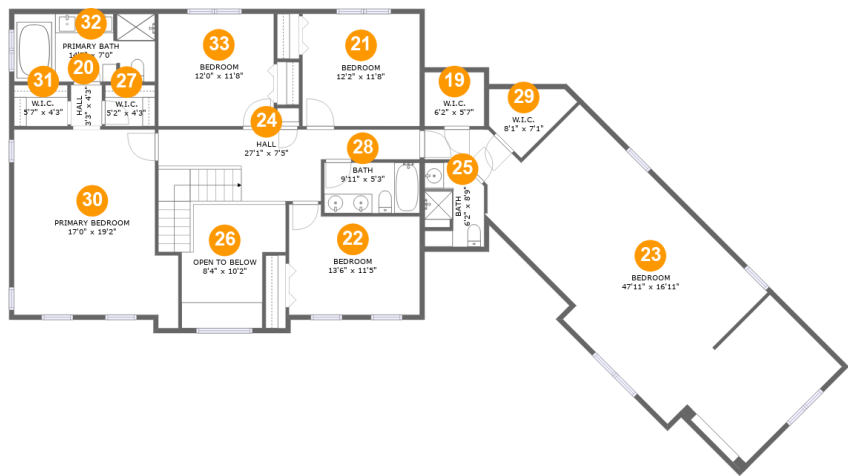
#		Max Dimensions	sqft	Included
7	Foyer	13'6" x 16'3"	190 sq. ft	Yes
8	Bath	8'5" x 5'0"	43 sq. ft	Yes
9	Living Room	23'10" x 19'5"	426 sq. ft	Yes
10	Kitchen	18'2" x 13'8"	247 sq. ft	Yes
11	Laundry	6'2" x 20'4"	105 sq. ft	Yes
12	Garage	41'2" x 20'0"	830 sq. ft	No
13	Hall	2'9" x 5'8"	15 sq. ft	Yes
14	Patio	36'1" x 21'11"	780 sq. ft	No
15	Patio	30'1" x 9'8"	324 sq. ft	No
16	Porch	14'2" x 6'9"	79 sq. ft	No
17	Dining Area	13'6" x 11'9"	160 sq. ft	Yes

Home report

**477 Mallard Court, Bloomingdale, DuPage County, Illinois,
United States, 60108**

#		Max Dimensions	sqft	Included
18	Office	14'7" x 13'4"	195 sq. ft	Yes

477 Mallard Court, Bloomingdale, DuPage County, Illinois,
United States, 60108



Room dimensions

Floor 3 Total:1874sqft Excluded: 243sqft

#		Max Dimensions	sqft	Included
19	W.I.C.	6'2" x 5'7"	19 sq. ft	Yes
20	Hall	3'3" x 4'3"	14 sq. ft	Yes
21	Bedroom	12'2" x 11'8"	141 sq. ft	Yes
22	Bedroom	13'6" x 11'5"	142 sq. ft	Yes
23	Bedroom	47'11" x 16'11"	553 sq. ft	Yes
24	Hall	27'1" x 7'5"	179 sq. ft	Yes
25	Bath	6'2" x 8'9"	39 sq. ft	Yes
26	Open To Below	8'4" x 10'2"	113 sq. ft	No
27	W.I.C.	5'2" x 4'3"	22 sq. ft	Yes
28	Bath	9'11" x 5'3"	52 sq. ft	Yes
29	W.I.C.	8'1" x 7'1"	23 sq. ft	Yes

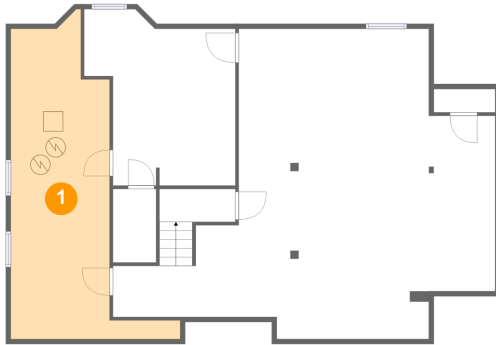
Home report

**477 Mallard Court, Bloomingdale, DuPage County, Illinois,
United States, 60108**

#		Max Dimensions	sqft	Included
30	Primary Bedroom	17'0" x 19'2"	298 sq. ft	Yes
31	W.I.C.	5'7" x 4'3"	24 sq. ft	Yes
32	Primary Bath	14'7" x 7'0"	101 sq. ft	Yes
33	Bedroom	12'0" x 11'8"	139 sq. ft	Yes

477 Mallard Court, Bloomingdale, DuPage County, Illinois,
United States, 60108

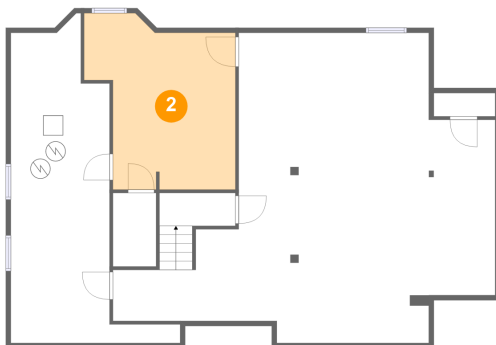
1 Floor 1 - Utility



Max Dimensions: 17'0" x 33'1"
Calculated Area: 310 sq. ft
Included: No

Heated: Yes
Finished: No
Enclosed: Yes
Contiguous: Yes
Permitted: Yes
Wet space: No
Addition: No
Conversion: No

2 Floor 1 - Bedroom

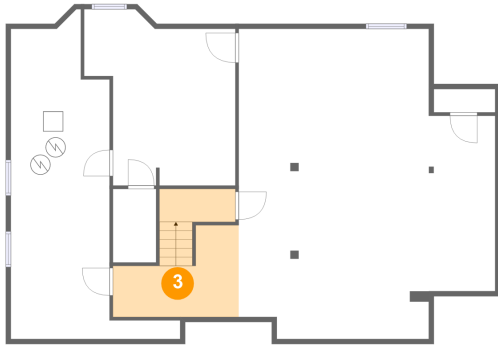


Max Dimensions: 15'2" x 17'8"
Calculated Area: 219 sq. ft
Included: Yes

Heated: Yes
Finished: Yes
Enclosed: Yes
Contiguous: Yes
Permitted: Yes
Wet space: No
Addition: No
Conversion: No

477 Mallard Court, Bloomingdale, DuPage County, Illinois,
United States, 60108

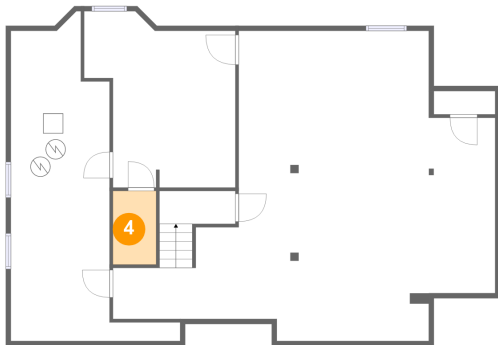
3 Floor 1 - Hall



Max Dimensions: 12'8" x 9'3"
Calculated Area: 122 sq. ft
Included: Yes

Heated: Yes
Finished: Yes
Enclosed: Yes
Contiguous: Yes
Permitted: Yes
Wet space: No
Addition: No
Conversion: No

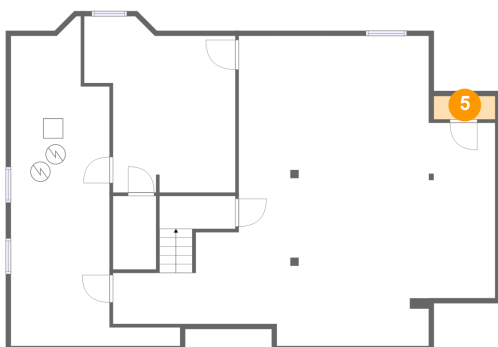
4 Floor 1 - W.I.C.



Max Dimensions: 4'4" x 7'5"
Calculated Area: 32 sq. ft
Included: Yes

Heated: Yes
Finished: Yes
Enclosed: Yes
Contiguous: Yes
Permitted: Yes
Wet space: No
Addition: No
Conversion: No

5 Floor 1 - Storage

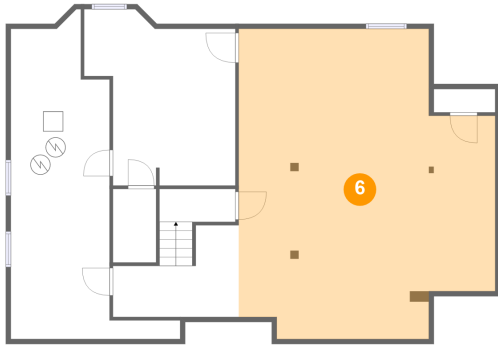


Max Dimensions: 6'2" x 2'4"
Calculated Area: 14 sq. ft
Included: No

Heated: No
Finished: No
Enclosed: No
Contiguous: Yes
Permitted: Yes
Wet space: No
Addition: No
Conversion: No

477 Mallard Court, Bloomingdale, DuPage County, Illinois,
United States, 60108

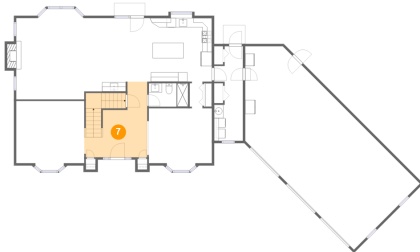
6 Floor 1 - Family Room



Max Dimensions: 25'9" x 31'2"
Calculated Area: 704 sq. ft
Included: Yes

Heated: Yes
Finished: Yes
Enclosed: Yes
Contiguous: Yes
Permitted: Yes
Wet space: No
Addition: No
Conversion: No

7 Floor 2 - Foyer



Max Dimensions: 13'6" x 16'3"
Calculated Area: 190 sq. ft
Included: Yes

Heated: Yes
Finished: Yes
Enclosed: Yes
Contiguous: Yes
Permitted: Yes
Wet space: No
Addition: No
Conversion: No

8 Floor 2 - Bath



Max Dimensions: 8'5" x 5'0"
Calculated Area: 43 sq. ft
Included: Yes

Heated: Yes
Finished: Yes
Enclosed: Yes
Contiguous: Yes
Permitted: Yes
Wet space: Yes
Addition: No
Conversion: No

477 Mallard Court, Bloomingdale, DuPage County, Illinois,
United States, 60108

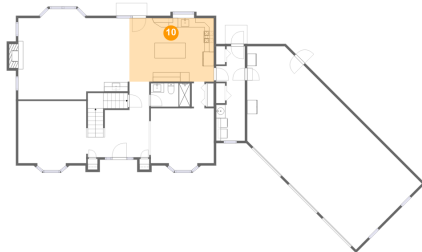
9 Floor 2 - Living Room



Max Dimensions: 23'10" x 19'5"
Calculated Area: 426 sq. ft
Included: Yes

Heated: Yes
Finished: Yes
Enclosed: Yes
Contiguous: Yes
Permitted: Yes
Wet space: No
Addition: No
Conversion: No

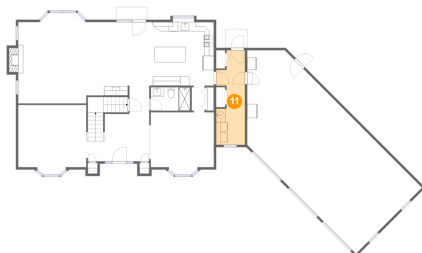
10 Floor 2 - Kitchen



Max Dimensions: 18'2" x 13'8"
Calculated Area: 247 sq. ft
Included: Yes

Heated: Yes
Finished: Yes
Enclosed: Yes
Contiguous: Yes
Permitted: Yes
Wet space: No
Addition: No
Conversion: No

11 Floor 2 - Laundry



Max Dimensions: 6'2" x 20'4"
Calculated Area: 105 sq. ft
Included: Yes

Heated: Yes
Finished: Yes
Enclosed: Yes
Contiguous: Yes
Permitted: Yes
Wet space: No
Addition: No
Conversion: No

477 Mallard Court, Bloomingdale, DuPage County, Illinois,
United States, 60108

12 Floor 2 - Garage



Max Dimensions: 41'2" x 20'0"
Calculated Area: 830 sq. ft
Included: No

Heated: No
Finished: No
Enclosed: Yes
Contiguous: Yes
Permitted: Yes
Wet space: No
Addition: No
Conversion: No

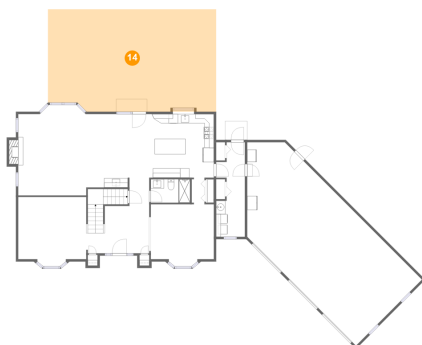
13 Floor 2 - Hall



Max Dimensions: 2'9" x 5'8"
Calculated Area: 15 sq. ft
Included: Yes

Heated: Yes
Finished: Yes
Enclosed: Yes
Contiguous: Yes
Permitted: Yes
Wet space: No
Addition: No
Conversion: No

14 Floor 2 - Patio

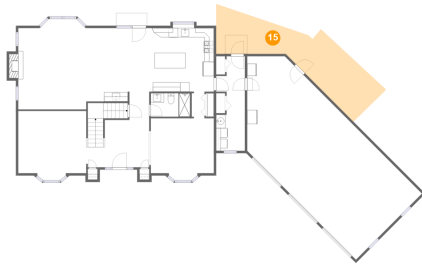


Max Dimensions: 36'1" x 21'11"
Calculated Area: 780 sq. ft
Included: No

Heated: No
Finished: Yes
Enclosed: No
Contiguous: Yes
Permitted: Yes
Wet space: No
Addition: No
Conversion: No

477 Mallard Court, Bloomingdale, DuPage County, Illinois,
United States, 60108

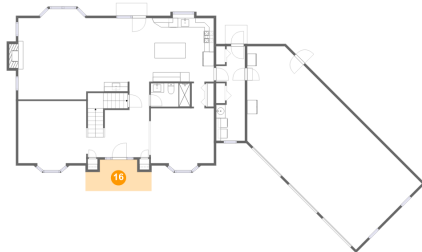
15 Floor 2 - Patio



Max Dimensions: 30'1" x 9'8"
Calculated Area: 324 sq. ft
Included: No

Heated: No
Finished: Yes
Enclosed: No
Contiguous: Yes
Permitted: Yes
Wet space: No
Addition: No
Conversion: No

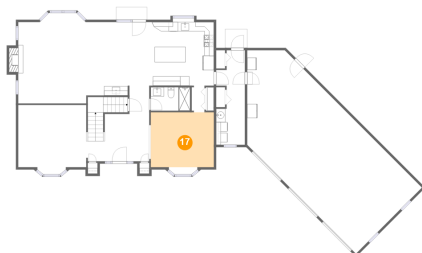
16 Floor 2 - Porch



Max Dimensions: 14'2" x 6'9"
Calculated Area: 79 sq. ft
Included: No

Heated: No
Finished: Yes
Enclosed: No
Contiguous: Yes
Permitted: Yes
Wet space: No
Addition: No
Conversion: No

17 Floor 2 - Dining Area



Max Dimensions: 13'6" x 11'9"
Calculated Area: 160 sq. ft
Included: Yes

Heated: Yes
Finished: Yes
Enclosed: Yes
Contiguous: Yes
Permitted: Yes
Wet space: No
Addition: No
Conversion: No

477 Mallard Court, Bloomingdale, DuPage County, Illinois,
United States, 60108

18 Floor 2 - Office



Max Dimensions: 14'7" x 13'4"
Calculated Area: 195 sq. ft
Included: Yes

Heated: Yes
Finished: Yes
Enclosed: Yes
Contiguous: Yes
Permitted: Yes
Wet space: No
Addition: No
Conversion: No

19 Floor 3 - W.I.C.



Max Dimensions: 6'2" x 5'7"
Calculated Area: 19 sq. ft
Included: Yes

Heated: Yes
Finished: Yes
Enclosed: Yes
Contiguous: Yes
Permitted: Yes
Wet space: No
Addition: No
Conversion: No

20 Floor 3 - Hall

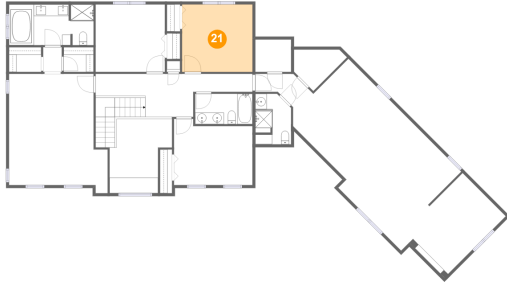


Max Dimensions: 3'3" x 4'3"
Calculated Area: 14 sq. ft
Included: Yes

Heated: Yes
Finished: Yes
Enclosed: Yes
Contiguous: Yes
Permitted: Yes
Wet space: No
Addition: No
Conversion: No

477 Mallard Court, Bloomingdale, DuPage County, Illinois,
United States, 60108

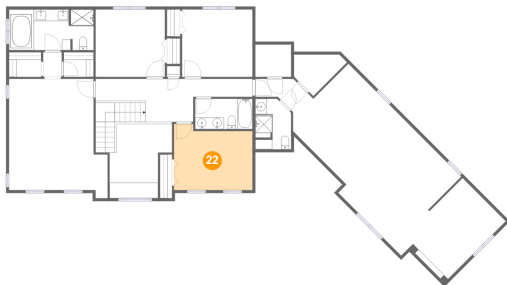
21 Floor 3 - Bedroom



Max Dimensions: 12'2" x 11'8"
Calculated Area: 141 sq. ft
Included: Yes

Heated: Yes
Finished: Yes
Enclosed: Yes
Contiguous: Yes
Permitted: Yes
Wet space: No
Addition: No
Conversion: No

22 Floor 3 - Bedroom



Max Dimensions: 13'6" x 11'5"
Calculated Area: 142 sq. ft
Included: Yes

Heated: Yes
Finished: Yes
Enclosed: Yes
Contiguous: Yes
Permitted: Yes
Wet space: No
Addition: No
Conversion: No

23 Floor 3 - Bedroom

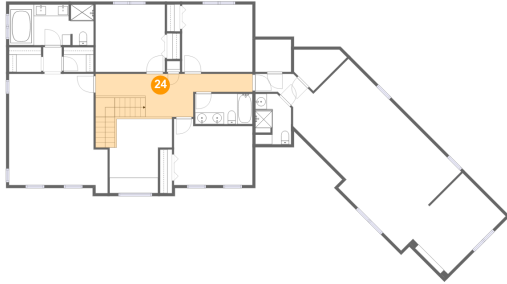


Max Dimensions: 47'11" x 16'11"
Calculated Area: 553 sq. ft
Included: Yes

Heated: Yes
Finished: Yes
Enclosed: Yes
Contiguous: Yes
Permitted: Yes
Wet space: No
Addition: No
Conversion: No

477 Mallard Court, Bloomingdale, DuPage County, Illinois,
United States, 60108

24 Floor 3 - Hall



Max Dimensions: 27'1" x 7'5"
Calculated Area: 179 sq. ft
Included: Yes

Heated: Yes
Finished: Yes
Enclosed: Yes
Contiguous: Yes
Permitted: Yes
Wet space: No
Addition: No
Conversion: No

25 Floor 3 - Bath



Max Dimensions: 6'2" x 8'9"
Calculated Area: 39 sq. ft
Included: Yes

Heated: Yes
Finished: Yes
Enclosed: Yes
Contiguous: Yes
Permitted: Yes
Wet space: Yes
Addition: No
Conversion: No

26 Floor 3 - Open To Below



Max Dimensions: 8'4" x 10'2"
Calculated Area: 113 sq. ft
Included: No

Heated: No
Finished: No
Enclosed: No
Contiguous: Yes
Permitted: No
Wet space: No
Addition: No
Conversion: No

477 Mallard Court, Bloomingdale, DuPage County, Illinois,
United States, 60108

27 Floor 3 - W.I.C.



Max Dimensions: 5'2" x 4'3"
Calculated Area: 22 sq. ft
Included: Yes

Heated: Yes
Finished: Yes
Enclosed: Yes
Contiguous: Yes
Permitted: Yes
Wet space: No
Addition: No
Conversion: No

28 Floor 3 - Bath



Max Dimensions: 9'11" x 5'3"
Calculated Area: 52 sq. ft
Included: Yes

Heated: Yes
Finished: Yes
Enclosed: Yes
Contiguous: Yes
Permitted: Yes
Wet space: Yes
Addition: No
Conversion: No

29 Floor 3 - W.I.C.



Max Dimensions: 8'1" x 7'1"
Calculated Area: 23 sq. ft
Included: Yes

Heated: Yes
Finished: Yes
Enclosed: Yes
Contiguous: Yes
Permitted: Yes
Wet space: No
Addition: No
Conversion: No

477 Mallard Court, Bloomingdale, DuPage County, Illinois,
United States, 60108

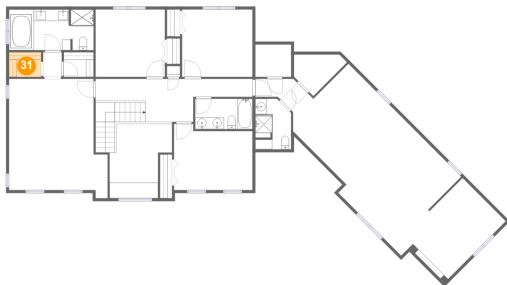
30 Floor 3 - Primary Bedroom



Max Dimensions: 17'0" x 19'2"
Calculated Area: 298 sq. ft
Included: Yes

Heated: Yes
Finished: Yes
Enclosed: Yes
Contiguous: Yes
Permitted: Yes
Wet space: No
Addition: No
Conversion: No

31 Floor 3 - W.I.C.



Max Dimensions: 5'7" x 4'3"
Calculated Area: 24 sq. ft
Included: Yes

Heated: Yes
Finished: Yes
Enclosed: Yes
Contiguous: Yes
Permitted: Yes
Wet space: No
Addition: No
Conversion: No

32 Floor 3 - Primary Bath



Max Dimensions: 14'7" x 7'0"
Calculated Area: 101 sq. ft
Included: Yes

Heated: Yes
Finished: Yes
Enclosed: Yes
Contiguous: Yes
Permitted: Yes
Wet space: Yes
Addition: No
Conversion: No

Home report

**477 Mallard Court, Bloomingdale, DuPage County, Illinois,
United States, 60108**

33 Floor 3 - Bedroom



**Max Dimensions: 12'0" x
11'8"**

**Calculated Area: 139 sq. ft
Included: Yes**

**Heated: Yes
Finished: Yes
Enclosed: Yes
Contiguous:
Yes
Permitted: Yes
Wet space: No
Addition: No
Conversion: No**