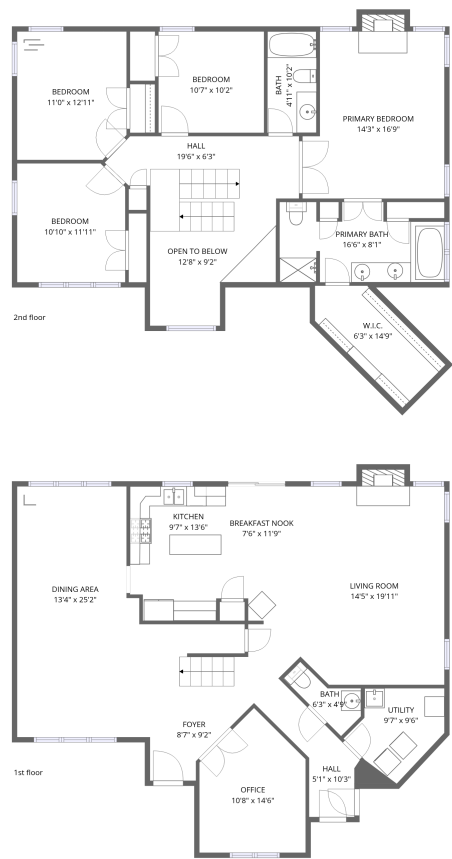


Home data report

6536 Fountain Springs Blvd,Indianapolis,IN,US



Total Area: 2316 sq. ft


1st Floor: 1227 sq. ft, 2nd Floor: 1089 sq. ft

Excluded: Utility 70 sq. ft, Fireplace 18 sq. ft, Open to below 105 sq. ft, Walls: 159 sq. ft

Property summary

 2 Floors

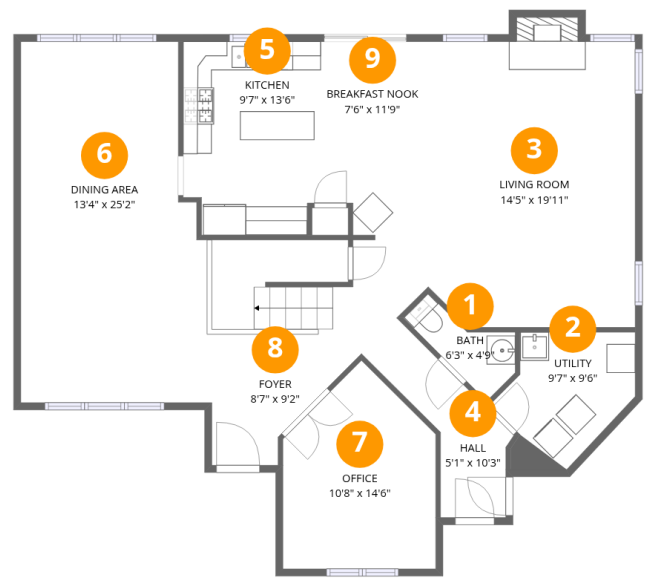
 4 Bedrooms

 2 Bathrooms

 1 Half baths

Home data report

6536 Fountain Springs Blvd,Indianapolis,IN,US



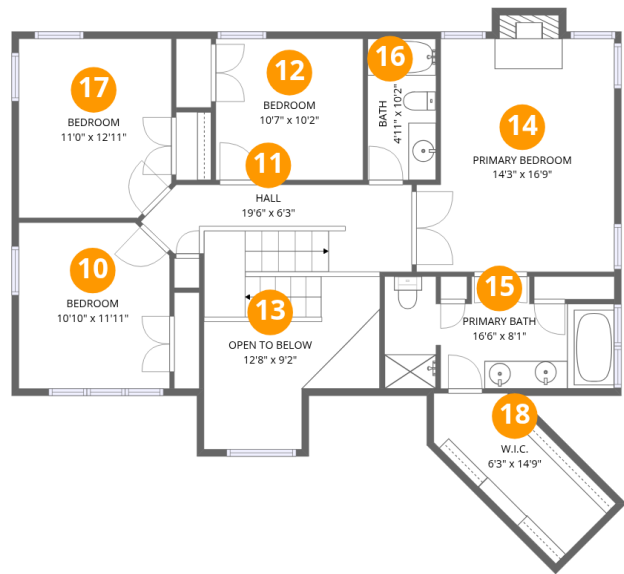
Room dimensions

Floor 1 Total:1227sqft Excluded: 79sqft

#		Dimensions	sqft	Counted as living area
1	Bath	6'3" x 4'9"	30 sq. ft	Yes
2	Utility	9'7" x 9'6"	91 sq. ft	No
3	Living Room	14'5" x 19'11"	287 sq. ft	Yes
4	Hall	5'1" x 10'3"	52 sq. ft	Yes
5	Kitchen	9'7" x 13'6"	129 sq. ft	Yes
6	Dining Area	13'4" x 25'2"	335 sq. ft	Yes
7	Office	10'8" x 14'6"	154 sq. ft	Yes
8	Foyer	8'7" x 9'2"	78 sq. ft	Yes
9	Breakfast Nook	7'6" x 11'9"	88 sq. ft	Yes

Home data report

6536 Fountain Springs Blvd,Indianapolis,IN,US



Room dimensions

Floor 2 Total:1089sqft Excluded: 114sqft

#		Dimensions	sqft	Counted as living area
10	Bedroom	10'10" x 11'11"	129 sq. ft	Yes
11	Hall	19'6" x 6'3"	122 sq. ft	Yes
12	Bedroom	10'7" x 10'2"	108 sq. ft	Yes
13	Open To Below	12'8" x 9'2"	116 sq. ft	No
14	Primary Bedroom	14'3" x 16'9"	238 sq. ft	Yes
15	Primary Bath	16'6" x 8'1"	133 sq. ft	Yes
16	Bath	4'11" x 10'2"	50 sq. ft	Yes
17	Bedroom	11'0" x 12'11"	142 sq. ft	Yes
18	W.I.C.	6'3" x 14'9"	92 sq. ft	Yes

1 Floor 1 - Bath



Dimensions: 6'3" x 4'9"
Area: 30 sq. ft
Counted as living area: Yes

Heated: Yes
Finished: Yes
Enclosed: Yes
Contiguous: Yes
Permitted: Yes
Wet space: Yes
Addition: No
Conversion: No

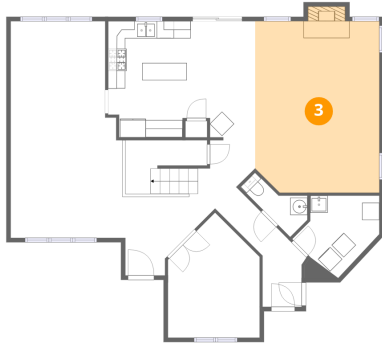
2 Floor 1 - Utility



Dimensions: 9'7" x 9'6"
Area: 91 sq. ft
Counted as living area: No

Heated: Yes
Finished: No
Enclosed: Yes
Contiguous: Yes
Permitted: Yes
Wet space: No
Addition: No
Conversion: No

3 Floor 1 - Living Room



Dimensions: 14'5" x 19'11"
Area: 287 sq. ft
Counted as living area: Yes

Heated: Yes
Finished: Yes
Enclosed: Yes
Contiguous: Yes
Permitted: Yes
Wet space: No
Addition: No
Conversion: No

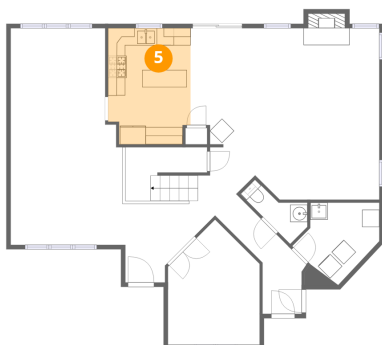
4 Floor 1 - Hall



Dimensions: 5'1" x 10'3"
Area: 52 sq. ft
Counted as living area: Yes

Heated: Yes
Finished: Yes
Enclosed: Yes
Contiguous: Yes
Permitted: Yes
Wet space: No
Addition: No
Conversion: No

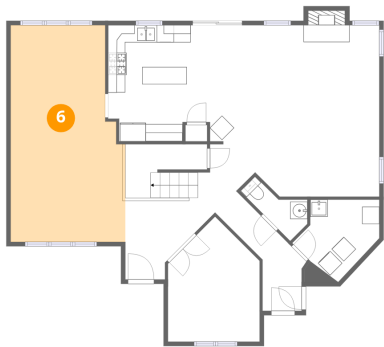
5 Floor 1 - Kitchen



Dimensions: 9'7" x 13'6"
Area: 129 sq. ft
Counted as living area: Yes

Heated: Yes
Finished: Yes
Enclosed: Yes
Contiguous: Yes
Permitted: Yes
Wet space: No
Addition: No
Conversion: No

6 Floor 1 - Dining Area



Dimensions: 13'4" x 25'2"
Area: 335 sq. ft
Counted as living area: Yes

Heated: Yes
Finished: Yes
Enclosed: Yes
Contiguous: Yes
Permitted: Yes
Wet space: No
Addition: No
Conversion: No

7 Floor 1 - Office



Dimensions: 10'8" x 14'6"
Area: 154 sq. ft
Counted as living area: Yes

Heated: Yes
Finished: Yes
Enclosed: Yes
Contiguous: Yes
Permitted: Yes
Wet space: No
Addition: No
Conversion: No

8 Floor 1 - Foyer



Dimensions: 8'7" x 9'2"
Area: 78 sq. ft
Counted as living area: Yes

Heated: Yes
Finished: Yes
Enclosed: Yes
Contiguous: Yes
Permitted: Yes
Wet space: No
Addition: No
Conversion: No

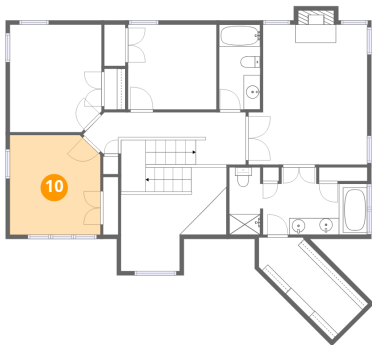
9 Floor 1 - Breakfast Nook



Dimensions: 7'6" x 11'9"
Area: 88 sq. ft
Counted as living area: Yes

Heated: Yes
Finished: Yes
Enclosed: Yes
Contiguous: Yes
Permitted: Yes
Wet space: No
Addition: No
Conversion: No

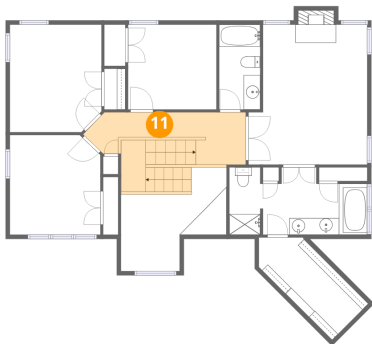
10 Floor 2 - Bedroom



Dimensions: 10'10" x 11'11"
Area: 129 sq. ft
Counted as living area: Yes

Heated: Yes
Finished: Yes
Enclosed: Yes
Contiguous: Yes
Permitted: Yes
Wet space: No
Addition: No
Conversion: No

11 Floor 2 - Hall



Dimensions: 19'6" x 6'3"
Area: 122 sq. ft
Counted as living area: Yes

Heated: Yes
Finished: Yes
Enclosed: Yes
Contiguous: Yes
Permitted: Yes
Wet space: No
Addition: No
Conversion: No

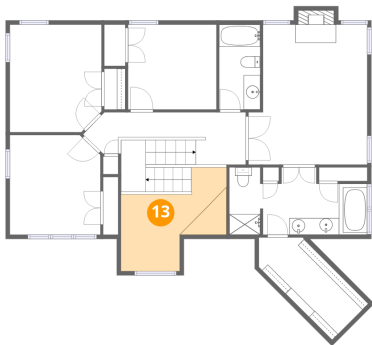
12 Floor 2 - Bedroom



Dimensions: 10'7" x 10'2"
Area: 108 sq. ft
Counted as living area: Yes

Heated: Yes
Finished: Yes
Enclosed: Yes
Contiguous: Yes
Permitted: Yes
Wet space: No
Addition: No
Conversion: No

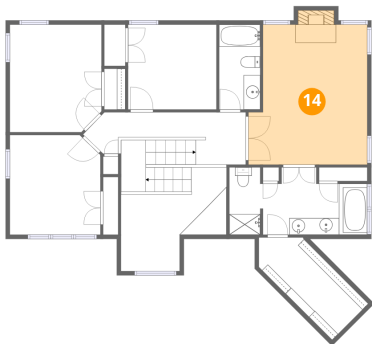
13 Floor 2 - Open To Below



Dimensions: 12'8" x 9'2"
Area: 116 sq. ft
Counted as living area: No

Heated: No
Finished: No
Enclosed: No
Contiguous: Yes
Permitted: No
Wet space: No
Addition: No
Conversion: No

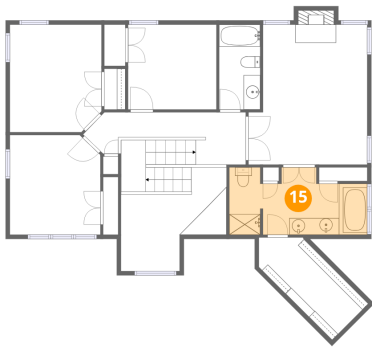
14 Floor 2 - Primary Bedroom



Dimensions: 14'3" x 16'9"
Area: 238 sq. ft
Counted as living area: Yes

Heated: Yes
Finished: Yes
Enclosed: Yes
Contiguous: Yes
Permitted: Yes
Wet space: No
Addition: No
Conversion: No

15 Floor 2 - Primary Bath



Dimensions: 16'6" x 8'1"
Area: 133 sq. ft
Counted as living area: Yes

Heated: Yes
Finished: Yes
Enclosed: Yes
Contiguous: Yes
Permitted: Yes
Wet space: Yes
Addition: No
Conversion: No

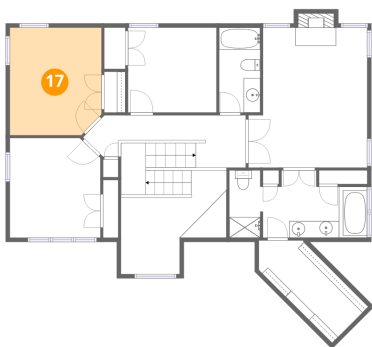
16 Floor 2 - Bath



Dimensions: 4'11" x 10'2"
Area: 50 sq. ft
Counted as living area: Yes

Heated: Yes
Finished: Yes
Enclosed: Yes
Contiguous: Yes
Permitted: Yes
Wet space: Yes
Addition: No
Conversion: No

17 Floor 2 - Bedroom



Dimensions: 11'0" x 12'11"
Area: 142 sq. ft
Counted as living area: Yes

Heated: Yes
Finished: Yes
Enclosed: Yes
Contiguous: Yes
Permitted: Yes
Wet space: No
Addition: No
Conversion: No

Home data report

6536 Fountain Springs Blvd,Indianapolis,IN,US

18 Floor 2 - W.I.C.



Dimensions: 6'3" x 14'9"
Area: 92 sq. ft
Counted as living area: Yes

Heated: Yes
Finished: Yes
Enclosed: Yes
Contiguous: Yes
Permitted: Yes
Wet space: No
Addition: No
Conversion: No