

Home data report

2839 Matthew Lane, Vinton, Roanoke County, Virginia, United States, 24179



Total Area: 2314 sq. ft

1st Floor: 12 sq. ft, 2nd Floor: 2302 sq. ft

Excluded: Storage 523 sq. ft, Room 463 sq. ft, Recreation room 1293 sq. ft, Garage 506 sq. ft, Screened porch 219 sq. ft, Porch 27 sq. ft, Deck 109 sq. ft, Fireplace 14 sq. ft, Walls: 274 sq. ft

Property summary

 **2** Floors

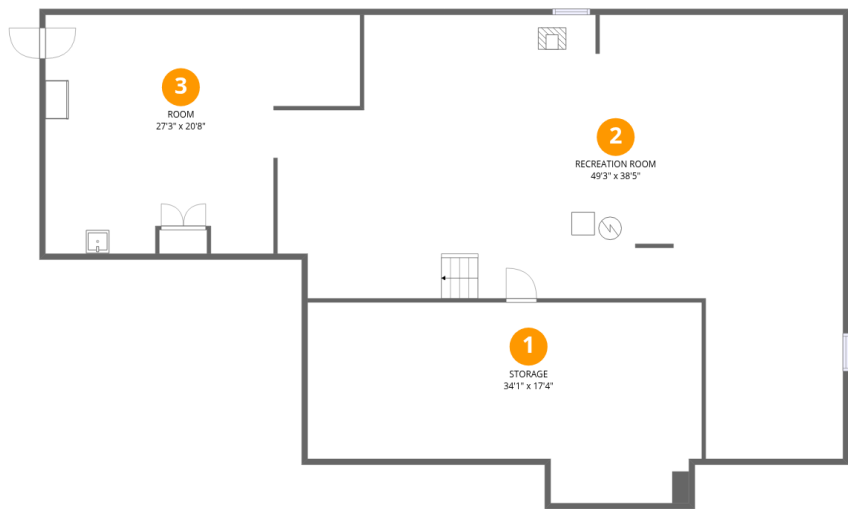
 **3** Bedrooms

 **2** Bathrooms

 **1** Garages

Home data report

2839 Matthew Lane, Vinton, Roanoke County, Virginia, United States, 24179



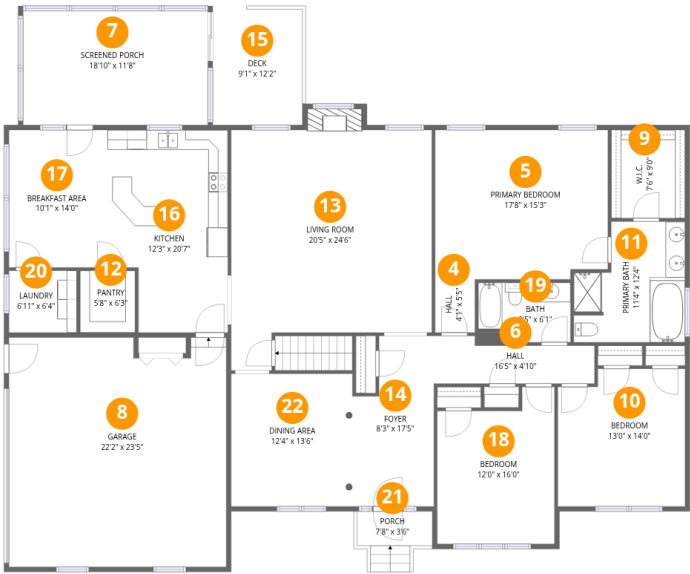
Room dimensions

Floor 1

Total:12sqft Excluded: 2279sqft

#		Dimensions	sqft	Counted as living area
1	Storage	34'1" x 17'4"	591 sq. ft	No
2	Recreation Room	49'3" x 38'5"	1890 sq. ft	No
3	Room	27'3" x 20'8"	562 sq. ft	No

2839 Matthew Lane, Vinton, Roanoke County, Virginia, United States, 24179



Room dimensions

Floor 2 Total:2302sqft Excluded: 875sqft

#		Dimensions	sqft	Counted as living area
4	Hall	4'1" x 5'5"	22 sq. ft	Yes
5	Primary Bedroom	17'8" x 15'3"	268 sq. ft	Yes
6	Hall	16'5" x 4'10"	80 sq. ft	Yes
7	Screened Porch	18'10" x 11'8"	219 sq. ft	No
8	Garage	22'2" x 23'5"	519 sq. ft	No
9	W.I.C.	7'6" x 9'0"	68 sq. ft	Yes
10	Bedroom	13'0" x 14'0"	182 sq. ft	Yes
11	Primary Bath	11'4" x 12'4"	140 sq. ft	Yes
12	Pantry	5'8" x 6'3"	35 sq. ft	Yes
13	Living Room	20'5" x 24'6"	501 sq. ft	Yes
14	Foyer	8'3" x 17'5"	144 sq. ft	Yes

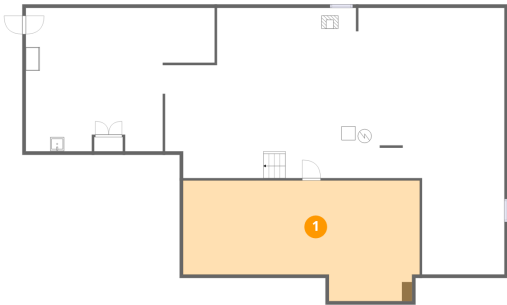
Home data report

2839 Matthew Lane, Vinton, Roanoke County, Virginia, United States, 24179

#		Dimensions	sqft	Counted as living area
15	Deck	9'1" x 12'2"	111 sq. ft	No
16	Kitchen	12'3" x 20'7"	253 sq. ft	Yes
17	Breakfast Area	10'1" x 14'0"	141 sq. ft	Yes
18	Bedroom	12'0" x 16'0"	192 sq. ft	Yes
19	Bath	9'5" x 6'1"	57 sq. ft	Yes
20	Laundry	6'11" x 6'4"	44 sq. ft	Yes
21	Porch	7'8" x 3'6"	27 sq. ft	No
22	Dining Area	12'4" x 13'6"	167 sq. ft	Yes

2839 Matthew Lane, Vinton, Roanoke County, Virginia, United States, 24179

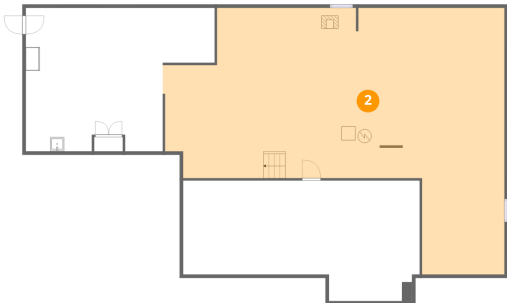
1 Floor 1 - Storage



Dimensions: 34'1" x 17'4"
Area: 591 sq. ft
Counted as living area: No

Heated: No
Finished: No
Enclosed: No
Contiguous: Yes
Permitted: Yes
Wet space: No
Addition: No
Conversion: No

2 Floor 1 - Recreation Room



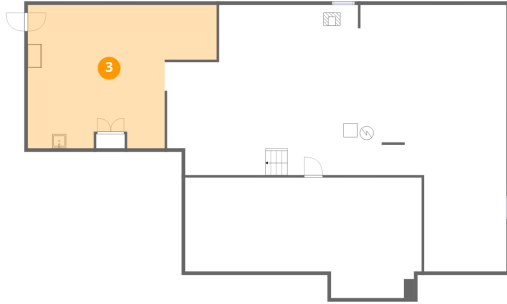
Dimensions: 49'3" x 38'5"
Area: 1890 sq. ft
Counted as living area: No

Heated: Yes
Finished: No
Enclosed: Yes
Contiguous: Yes
Permitted: Yes
Wet space: No
Addition: No
Conversion: No

Home data report

2839 Matthew Lane, Vinton, Roanoke County, Virginia, United States, 24179

3 Floor 1 - Room



Dimensions: 27'3" x 20'8"
Area: 562 sq. ft
Counted as living area: No

Heated: Yes
Finished: No
Enclosed: Yes
Contiguous: Yes
Permitted: Yes
Wet space: No
Addition: No
Conversion: No

4 Floor 2 - Hall



Dimensions: 4'1" x 5'5"
Area: 22 sq. ft
Counted as living area: Yes

Heated: Yes
Finished: Yes
Enclosed: Yes
Contiguous: Yes
Permitted: Yes
Wet space: No
Addition: No
Conversion: No

5 Floor 2 - Primary Bedroom



Dimensions: 17'8" x 15'3"
Area: 268 sq. ft
Counted as living area: Yes

Heated: Yes
Finished: Yes
Enclosed: Yes
Contiguous: Yes
Permitted: Yes
Wet space: No
Addition: No
Conversion: No

2839 Matthew Lane, Vinton, Roanoke County, Virginia, United States, 24179

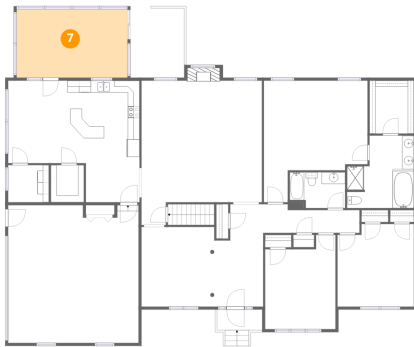
6 Floor 2 - Hall



Dimensions: 16'5" x 4'10"
Area: 80 sq. ft
Counted as living area: Yes

Heated: Yes
Finished: Yes
Enclosed: Yes
Contiguous: Yes
Permitted: Yes
Wet space: No
Addition: No
Conversion: No

7 Floor 2 - Screened Porch



Dimensions: 18'10" x 11'8"
Area: 219 sq. ft
Counted as living area: No

Heated: No
Finished: No
Enclosed: No
Contiguous: Yes
Permitted: Yes
Wet space: No
Addition: No
Conversion: No

8 Floor 2 - Garage



Dimensions: 22'2" x 23'5"
Area: 519 sq. ft
Counted as living area: No

Heated: No
Finished: No
Enclosed: Yes
Contiguous: Yes
Permitted: Yes
Wet space: No
Addition: No
Conversion: No

9 Floor 2 - W.I.C.



Dimensions: 7'6" x 9'0"
Area: 68 sq. ft
Counted as living area: Yes

Heated: Yes
Finished: Yes
Enclosed: Yes
Contiguous: Yes
Permitted: Yes
Wet space: No
Addition: No
Conversion: No

10 Floor 2 - Bedroom



Dimensions: 13'0" x 14'0"
Area: 182 sq. ft
Counted as living area: Yes

Heated: Yes
Finished: Yes
Enclosed: Yes
Contiguous: Yes
Permitted: Yes
Wet space: No
Addition: No
Conversion: No

11 Floor 2 - Primary Bath



Dimensions: 11'4" x 12'4"
Area: 140 sq. ft
Counted as living area: Yes

Heated: Yes
Finished: Yes
Enclosed: Yes
Contiguous: Yes
Permitted: Yes
Wet space: Yes
Addition: No
Conversion: No

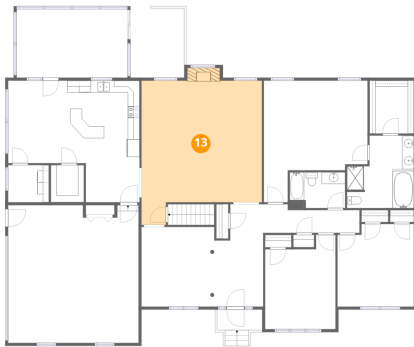
12 Floor 2 - Pantry



Dimensions: 5'8" x 6'3"
Area: 35 sq. ft
Counted as living area: Yes

Heated: Yes
Finished: Yes
Enclosed: Yes
Contiguous: Yes
Permitted: Yes
Wet space: No
Addition: No
Conversion: No

13 Floor 2 - Living Room



Dimensions: 20'5" x 24'6"
Area: 501 sq. ft
Counted as living area: Yes

Heated: Yes
Finished: Yes
Enclosed: Yes
Contiguous: Yes
Permitted: Yes
Wet space: No
Addition: No
Conversion: No

14 Floor 2 - Foyer



Dimensions: 8'3" x 17'5"
Area: 144 sq. ft
Counted as living area: Yes

Heated: Yes
Finished: Yes
Enclosed: Yes
Contiguous: Yes
Permitted: Yes
Wet space: No
Addition: No
Conversion: No

15 Floor 2 - Deck



Dimensions: 9'1" x 12'2"
Area: 111 sq. ft
Counted as living area: No

Heated: No
Finished: No
Enclosed: No
Contiguous: Yes
Permitted: Yes
Wet space: No
Addition: No
Conversion: No

16 Floor 2 - Kitchen



Dimensions: 12'3" x 20'7"
Area: 253 sq. ft
Counted as living area: Yes

Heated: Yes
Finished: Yes
Enclosed: Yes
Contiguous: Yes
Permitted: Yes
Wet space: No
Addition: No
Conversion: No

17 Floor 2 - Breakfast Area



Dimensions: 10'1" x 14'0"
Area: 141 sq. ft
Counted as living area: Yes

Heated: Yes
Finished: Yes
Enclosed: Yes
Contiguous: Yes
Permitted: Yes
Wet space: No
Addition: No
Conversion: No

18 Floor 2 - Bedroom



Dimensions: 12'0" x 16'0"
Area: 192 sq. ft
Counted as living area: Yes

Heated: Yes
Finished: Yes
Enclosed: Yes
Contiguous: Yes
Permitted: Yes
Wet space: No
Addition: No
Conversion: No

19 Floor 2 - Bath



Dimensions: 9'5" x 6'1"
Area: 57 sq. ft
Counted as living area: Yes

Heated: Yes
Finished: Yes
Enclosed: Yes
Contiguous: Yes
Permitted: Yes
Wet space: Yes
Addition: No
Conversion: No

20 Floor 2 - Laundry

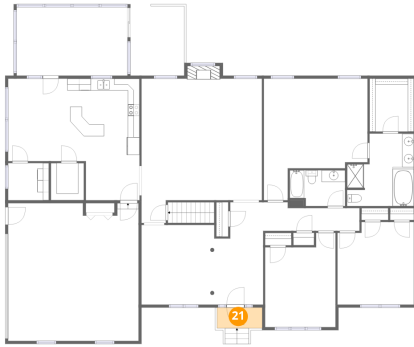


Dimensions: 6'11" x 6'4"
Area: 44 sq. ft
Counted as living area: Yes

Heated: Yes
Finished: Yes
Enclosed: Yes
Contiguous: Yes
Permitted: Yes
Wet space: No
Addition: No
Conversion: No

2839 Matthew Lane, Vinton, Roanoke County, Virginia, United States, 24179

21 Floor 2 - Porch



Dimensions: 7'8" x 3'6"
Area: 27 sq. ft
Counted as living area: No

Heated: No
Finished: No
Enclosed: No
Contiguous: Yes
Permitted: Yes
Wet space: No
Addition: No
Conversion: No

22 Floor 2 - Dining Area



Dimensions: 12'4" x 13'6"
Area: 167 sq. ft
Counted as living area: Yes

Heated: Yes
Finished: Yes
Enclosed: Yes
Contiguous: Yes
Permitted: Yes
Wet space: No
Addition: No
Conversion: No