

Home data report

3041 Ontario Center Road, Walworth, Wayne County, New York,
United States, 14568

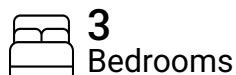


Total Area: 1721 sq. ft

1st Floor: 20 sq. ft, 2nd Floor: 1701 sq. ft

Excluded: Garage 579 sq. ft, Basement 313 sq. ft, Room 416 sq. ft, Utility 143 sq. ft, Walls: 197 sq. ft

Property summary

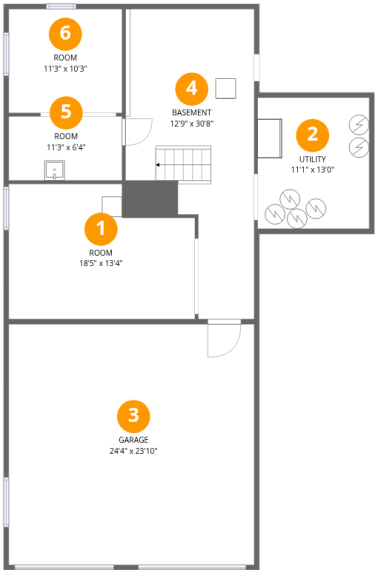


Scan captured on Sat, 15 Nov 2025 14:32:50 GMT

FLOOR PLAN CREATED BY CUBICASA APP. MEASUREMENTS DEEMED HIGHLY RELIABLE BUT NOT GUARANTEED.

Home data report

3041 Ontario Center Road, Walworth, Wayne County, New York,
United States, 14568



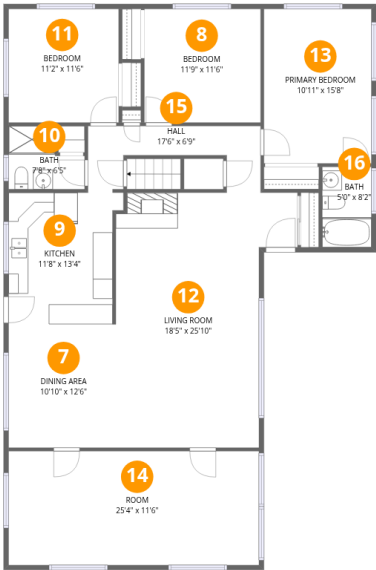
Room dimensions

Floor 1 Total:20sqft Excluded: 1451sqft

#		Dimensions	sqft	Counted as living area
1	Room	18'5" x 13'4"	222 sq. ft	No
2	Utility	11'1" x 13'0"	143 sq. ft	No
3	Garage	24'4" x 23'10"	579 sq. ft	No
4	Basement	12'9" x 30'8"	299 sq. ft	No
5	Room	11'3" x 6'4"	71 sq. ft	No
6	Room	11'3" x 10'3"	115 sq. ft	No

Home data report

3041 Ontario Center Road, Walworth, Wayne County, New York,
United States, 14568

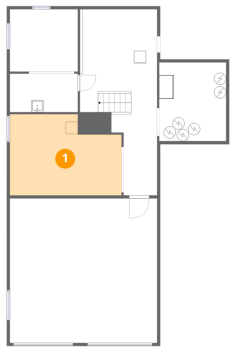


Room dimensions

Floor 2 Total:1701sqft Excluded: 0sqft

#		Dimensions	sqft	Counted as living area
7	Dining Area	10'10" x 12'6"	136 sq. ft	Yes
8	Bedroom	11'9" x 11'6"	135 sq. ft	Yes
9	Kitchen	11'8" x 13'4"	142 sq. ft	Yes
10	Bath	7'8" x 6'5"	40 sq. ft	Yes
11	Bedroom	11'2" x 11'6"	128 sq. ft	Yes
12	Living Room	18'5" x 25'10"	393 sq. ft	Yes
13	Primary Bedroom	10'11" x 15'8"	170 sq. ft	Yes
14	Room	25'4" x 11'6"	293 sq. ft	Yes
15	Hall	17'6" x 6'9"	78 sq. ft	Yes
16	Bath	5'0" x 8'2"	41 sq. ft	Yes

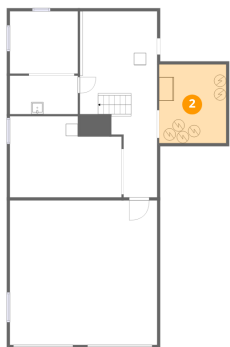
1 Floor 1 - Room



Dimensions: 18'5" x 13'4"
Area: 222 sq. ft
Counted as living area: No

Heated: Yes
Finished: No
Enclosed: Yes
Contiguous: Yes
Permitted: Yes
Wet space: No
Addition: No
Conversion: No

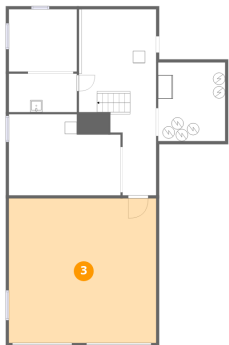
2 Floor 1 - Utility



Dimensions: 11'1" x 13'0"
Area: 143 sq. ft
Counted as living area: No

Heated: Yes
Finished: No
Enclosed: Yes
Contiguous: Yes
Permitted: Yes
Wet space: No
Addition: No
Conversion: No

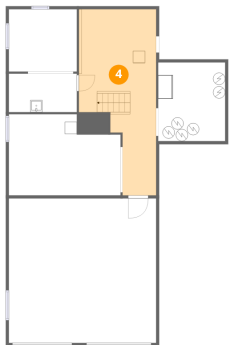
3 Floor 1 - Garage



Dimensions: 24'4" x 23'10"
Area: 579 sq. ft
Counted as living area: No

Heated: No
Finished: No
Enclosed: Yes
Contiguous: Yes
Permitted: Yes
Wet space: No
Addition: No
Conversion: No

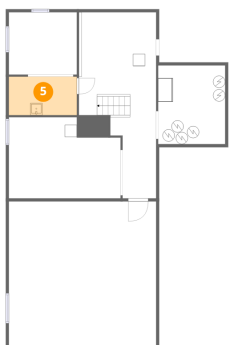
4 Floor 1 - Basement



Dimensions: 12'9" x 30'8"
Area: 299 sq. ft
Counted as living area: No

Heated: Yes
Finished: No
Enclosed: Yes
Contiguous: Yes
Permitted: Yes
Wet space: No
Addition: No
Conversion: No

5 Floor 1 - Room

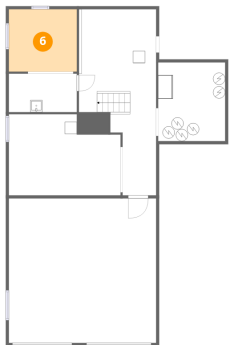


Dimensions: 11'3" x 6'4"
Area: 71 sq. ft
Counted as living area: No

Heated: Yes
Finished: No
Enclosed: Yes
Contiguous: Yes
Permitted: Yes
Wet space: No
Addition: No
Conversion: No

3041 Ontario Center Road, Walworth, Wayne County, New York,
United States, 14568

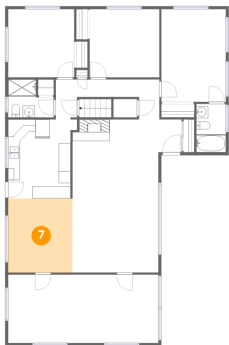
6 Floor 1 - Room



Dimensions: 11'3" x 10'3"
Area: 115 sq. ft
Counted as living area: No

Heated: Yes
Finished: No
Enclosed: Yes
Contiguous: Yes
Permitted: Yes
Wet space: No
Addition: No
Conversion: No

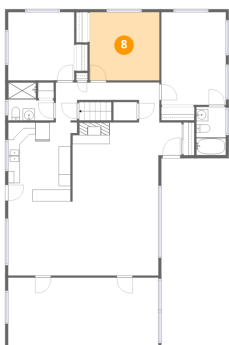
7 Floor 2 - Dining Area



Dimensions: 10'10" x 12'6"
Area: 136 sq. ft
Counted as living area: Yes

Heated: Yes
Finished: Yes
Enclosed: Yes
Contiguous: Yes
Permitted: Yes
Wet space: No
Addition: No
Conversion: No

8 Floor 2 - Bedroom



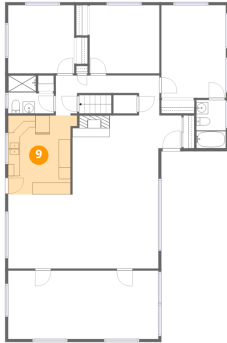
Dimensions: 11'9" x 11'6"
Area: 135 sq. ft
Counted as living area: Yes

Heated: Yes
Finished: Yes
Enclosed: Yes
Contiguous: Yes
Permitted: Yes
Wet space: No
Addition: No
Conversion: No

Home data report

3041 Ontario Center Road, Walworth, Wayne County, New York,
United States, 14568

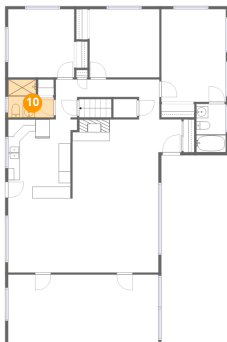
9 Floor 2 - Kitchen



Dimensions: 11'8" x 13'4"
Area: 142 sq. ft
Counted as living area: Yes

Heated: Yes
Finished: Yes
Enclosed: Yes
Contiguous: Yes
Permitted: Yes
Wet space: No
Addition: No
Conversion: No

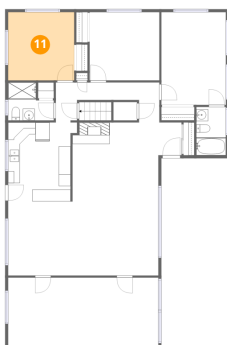
10 Floor 2 - Bath



Dimensions: 7'8" x 6'5"
Area: 40 sq. ft
Counted as living area: Yes

Heated: Yes
Finished: Yes
Enclosed: Yes
Contiguous: Yes
Permitted: Yes
Wet space: Yes
Addition: No
Conversion: No

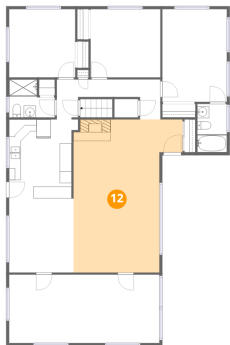
11 Floor 2 - Bedroom



Dimensions: 11'2" x 11'6"
Area: 128 sq. ft
Counted as living area: Yes

Heated: Yes
Finished: Yes
Enclosed: Yes
Contiguous: Yes
Permitted: Yes
Wet space: No
Addition: No
Conversion: No

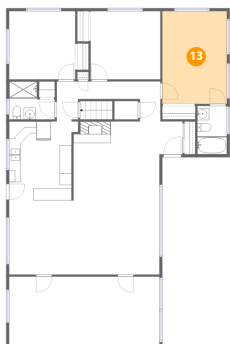
12 Floor 2 - Living Room



Dimensions: 18'5" x 25'10"
Area: 393 sq. ft
Counted as living area: Yes

Heated: Yes
Finished: Yes
Enclosed: Yes
Contiguous: Yes
Permitted: Yes
Wet space: No
Addition: No
Conversion: No

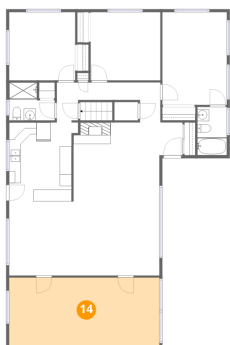
13 Floor 2 - Primary Bedroom



Dimensions: 10'11" x 15'8"
Area: 170 sq. ft
Counted as living area: Yes

Heated: Yes
Finished: Yes
Enclosed: Yes
Contiguous: Yes
Permitted: Yes
Wet space: No
Addition: No
Conversion: No

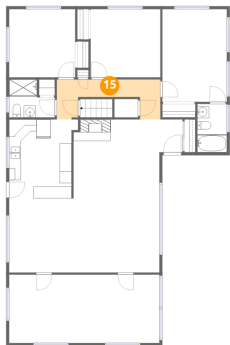
14 Floor 2 - Room



Dimensions: 25'4" x 11'6"
Area: 293 sq. ft
Counted as living area: Yes

Heated: Yes
Finished: Yes
Enclosed: Yes
Contiguous: Yes
Permitted: Yes
Wet space: No
Addition: No
Conversion: No

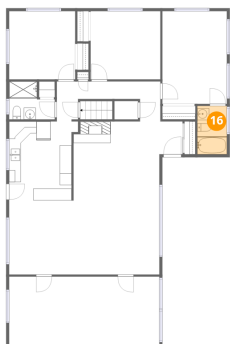
15 Floor 2 - Hall



Dimensions: 17'6" x 6'9"
Area: 78 sq. ft
Counted as living area: Yes

Heated: Yes
Finished: Yes
Enclosed: Yes
Contiguous: Yes
Permitted: Yes
Wet space: No
Addition: No
Conversion: No

16 Floor 2 - Bath



Dimensions: 5'0" x 8'2"
Area: 41 sq. ft
Counted as living area: Yes

Heated: Yes
Finished: Yes
Enclosed: Yes
Contiguous: Yes
Permitted: Yes
Wet space: Yes
Addition: No
Conversion: No