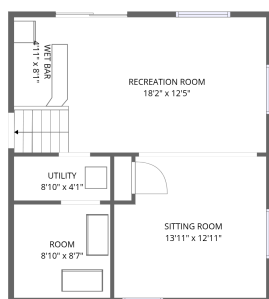
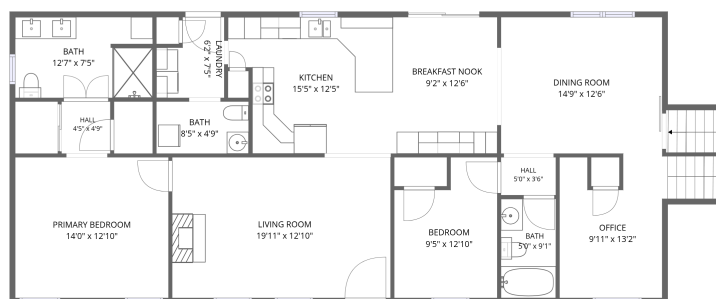


2nd floor



Basement



1st floor

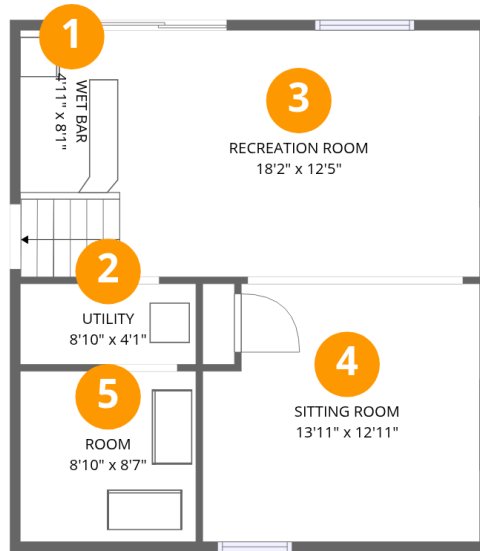
Total Area: 2707 sq. ft

Basement: 556 sq. ft, 1st Floor: 1560 sq. ft, 2nd Floor: 591 sq. ft

Excluded: Utility 36 sq. ft, Walls: 190 sq. ft

Property summary





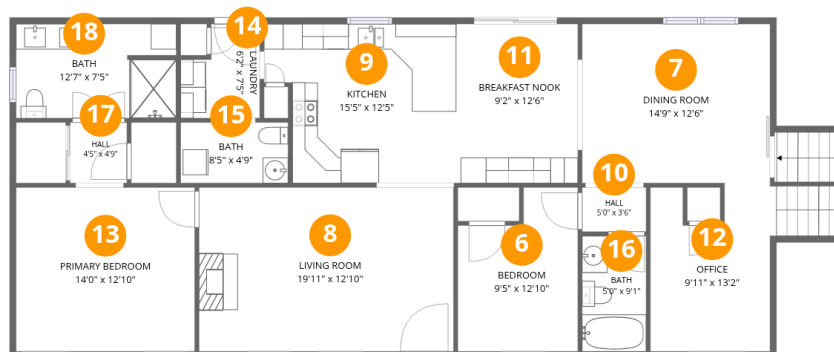
Room dimensions

Floor 1 Below grade

Total: 556 sqft

Excluded: 36 sqft

#		Dimensions	sqft	Counted as living area
1	Wet Bar	4'11" x 8'1"	40 sq. ft	Yes
2	Utility	8'10" x 4'1"	36 sq. ft	No
3	Recreation Room	18'2" x 12'5"	246 sq. ft	Yes
4	Sitting Room	13'11" x 12'11"	171 sq. ft	Yes
5	Room	8'10" x 8'7"	75 sq. ft	Yes



Room dimensions

Floor 2

Total: 1560sqft Excluded: 0sqft

#		Dimensions	sqft	Counted as living area
6	Bedroom	9'5" x 12'10"	106 sq. ft	Yes
7	Dining Room	14'9" x 12'6"	184 sq. ft	Yes
8	Living Room	19'11" x 12'10"	256 sq. ft	Yes
9	Kitchen	15'5" x 12'5"	175 sq. ft	Yes
10	Hall	5'0" x 3'6"	17 sq. ft	Yes
11	Breakfast Nook	9'2" x 12'6"	114 sq. ft	Yes
12	Office	9'11" x 13'2"	133 sq. ft	Yes
13	Primary Bedroom	14'0" x 12'10"	180 sq. ft	Yes
14	Laundry	6'2" x 7'5"	39 sq. ft	Yes
15	Bath	8'5" x 4'9"	40 sq. ft	Yes
16	Bath	5'0" x 9'1"	45 sq. ft	Yes

Home data report

19131 Sandstone Rd, Belle Fourche, SD, US



#		Dimensions	sqft	Counted as living area
17	Hall	4'5" x 4'9"	21 sq. ft	Yes
18	Bath	12'7" x 7'5"	91 sq. ft	Yes



Room dimensions

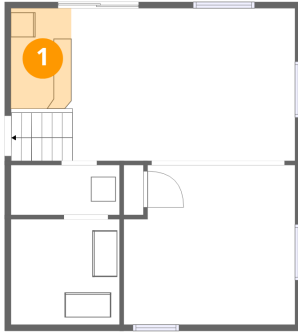
Floor 3

Total: 591 sqft

Excluded: 0 sqft

#		Dimensions	sqft	Counted as living area
19	W.I.C.	3'8" x 8'9"	32 sq. ft	Yes
20	W.I.C.	3'8" x 12'4"	45 sq. ft	Yes
21	Bedroom	19'1" x 12'4"	236 sq. ft	Yes
22	Bedroom	19'1" x 12'11"	217 sq. ft	Yes
23	Hall	3'3" x 3'10"	42 sq. ft	Yes

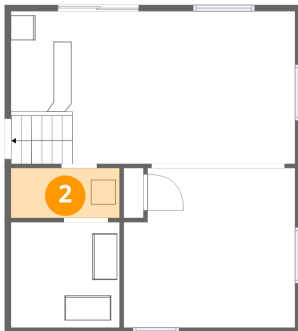
1 Floor 1 - Wet Bar



Dimensions: 4'11" x 8'1"
Area: 40 sq. ft
Counted as living area: Yes

Heated: Yes
Finished: Yes
Enclosed: Yes
Contiguous: Yes
Permitted: Yes
Wet space: No
Addition: No
Conversion: No

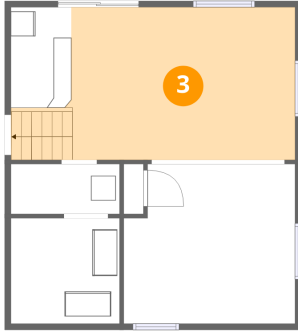
2 Floor 1 - Utility



Dimensions: 8'10" x 4'1"
Area: 36 sq. ft
Counted as living area: No

Heated: Yes
Finished: No
Enclosed: Yes
Contiguous: Yes
Permitted: Yes
Wet space: No
Addition: No
Conversion: No

3 Floor 1 - Recreation Room



Dimensions: 18'2" x 12'5"
Area: 246 sq. ft
Counted as living area: Yes

Heated: Yes
Finished: Yes
Enclosed: Yes
Contiguous: Yes
Permitted: Yes
Wet space: No
Addition: No
Conversion: No

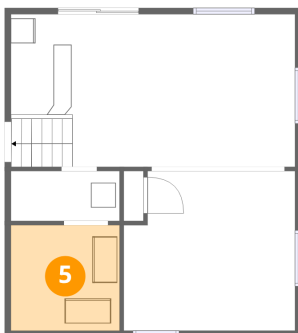
4 Floor 1 - Sitting Room



Dimensions: 13'11" x 12'11"
Area: 171 sq. ft
Counted as living area: Yes

Heated: Yes
Finished: Yes
Enclosed: Yes
Contiguous: Yes
Permitted: Yes
Wet space: No
Addition: No
Conversion: No

5 Floor 1 - Room



Dimensions: 8'10" x 8'7"
Area: 75 sq. ft
Counted as living area: No

Heated: Yes
Finished: Yes
Enclosed: Yes
Contiguous: No
Permitted: Yes
Wet space: No
Addition: No
Conversion: No

6 Floor 2 - Bedroom



Dimensions: 9'5" x 12'10"
Area: 106 sq. ft
Counted as living area: Yes

Heated: Yes
Finished: Yes
Enclosed: Yes
Contiguous: Yes
Permitted: Yes
Wet space: No
Addition: No
Conversion: No

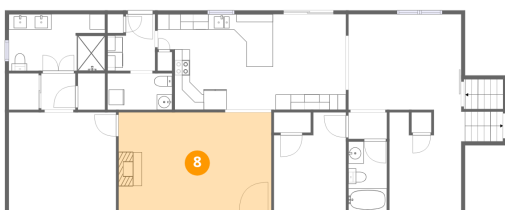
7 Floor 2 - Dining Room



Dimensions: 14'9" x 12'6"
Area: 184 sq. ft
Counted as living area: Yes

Heated: Yes
Finished: Yes
Enclosed: Yes
Contiguous: Yes
Permitted: Yes
Wet space: No
Addition: No
Conversion: No

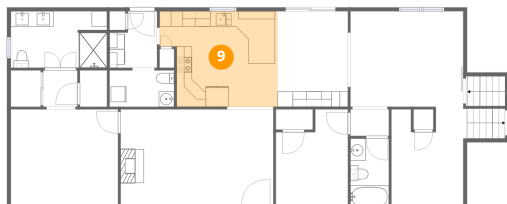
8 Floor 2 - Living Room



Dimensions: 19'11" x 12'10"
Area: 256 sq. ft
Counted as living area: Yes

Heated: Yes
Finished: Yes
Enclosed: Yes
Contiguous: Yes
Permitted: Yes
Wet space: No
Addition: No
Conversion: No

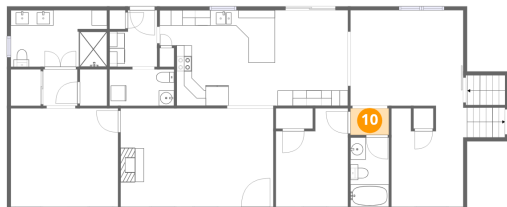
9 Floor 2 - Kitchen



Dimensions: 15'5" x 12'5"
Area: 175 sq. ft
Counted as living area: Yes

Heated: Yes
Finished: Yes
Enclosed: Yes
Contiguous: Yes
Permitted: Yes
Wet space: No
Addition: No
Conversion: No

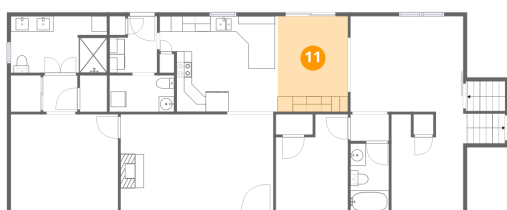
10 Floor 2 - Hall



Dimensions: 5'0" x 3'6"
Area: 17 sq. ft
Counted as living area: Yes

Heated: Yes
Finished: Yes
Enclosed: Yes
Contiguous: Yes
Permitted: Yes
Wet space: No
Addition: No
Conversion: No

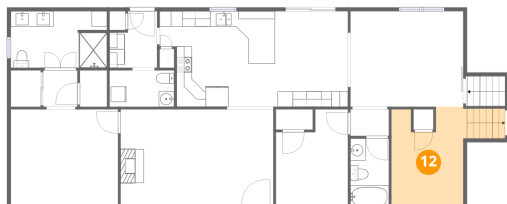
11 Floor 2 - Breakfast Nook



Dimensions: 9'2" x 12'6"
Area: 114 sq. ft
Counted as living area: Yes

Heated: Yes
Finished: Yes
Enclosed: Yes
Contiguous: Yes
Permitted: Yes
Wet space: No
Addition: No
Conversion: No

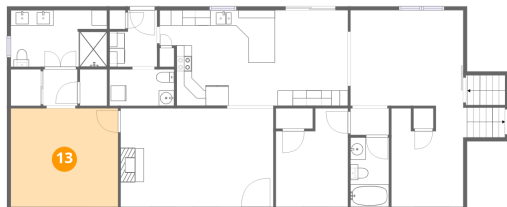
12 Floor 2 - Office



Dimensions: 9'11" x 13'2"
Area: 133 sq. ft
Counted as living area: Yes

Heated: Yes
Finished: Yes
Enclosed: Yes
Contiguous: Yes
Permitted: Yes
Wet space: No
Addition: No
Conversion: No

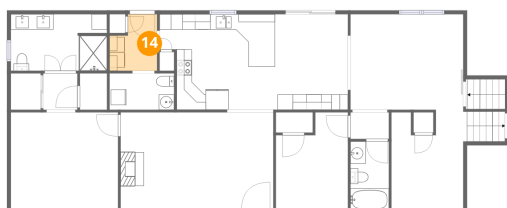
13 Floor 2 - Primary Bedroom



Dimensions: 14'0" x 12'10"
Area: 180 sq. ft
Counted as living area: Yes

Heated: Yes
Finished: Yes
Enclosed: Yes
Contiguous: Yes
Permitted: Yes
Wet space: No
Addition: No
Conversion: No

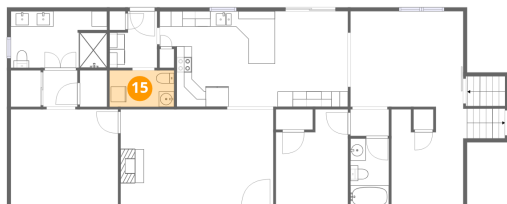
14 Floor 2 - Laundry



Dimensions: 6'2" x 7'5"
Area: 39 sq. ft
Counted as living area: Yes

Heated: Yes
Finished: Yes
Enclosed: Yes
Contiguous: Yes
Permitted: Yes
Wet space: No
Addition: No
Conversion: No

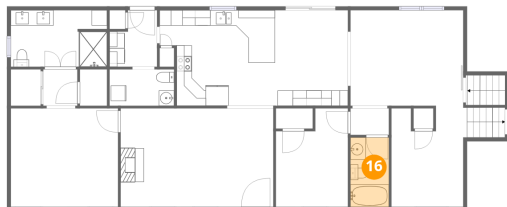
15 Floor 2 - Bath



Dimensions: 8'5" x 4'9"
Area: 40 sq. ft
Counted as living area: Yes

Heated: Yes
Finished: Yes
Enclosed: Yes
Contiguous: Yes
Permitted: Yes
Wet space: Yes
Addition: No
Conversion: No

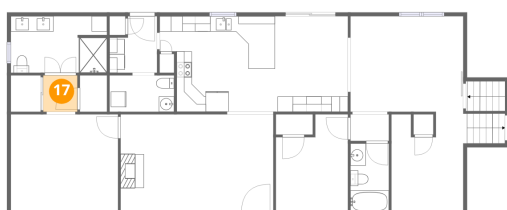
16 Floor 2 - Bath



Dimensions: 5'0" x 9'1"
Area: 45 sq. ft
Counted as living area: Yes

Heated: Yes
Finished: Yes
Enclosed: Yes
Contiguous: Yes
Permitted: Yes
Wet space: Yes
Addition: No
Conversion: No

17 Floor 2 - Hall



Dimensions: 4'5" x 4'9"
Area: 21 sq. ft
Counted as living area: Yes

Heated: Yes
Finished: Yes
Enclosed: Yes
Contiguous: Yes
Permitted: Yes
Wet space: No
Addition: No
Conversion: No

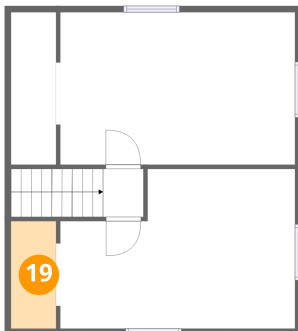
18 Floor 2 - Bath



Dimensions: 12'7" x 7'5"
Area: 91 sq. ft
Counted as living area: Yes

Heated: Yes
Finished: Yes
Enclosed: Yes
Contiguous: Yes
Permitted: Yes
Wet space: Yes
Addition: No
Conversion: No

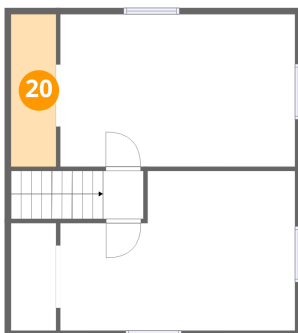
19 Floor 3 - W.I.C.



Dimensions: 3'8" x 8'9"
Area: 32 sq. ft
Counted as living area: Yes

Heated: Yes
Finished: Yes
Enclosed: Yes
Contiguous: Yes
Permitted: Yes
Wet space: No
Addition: No
Conversion: No

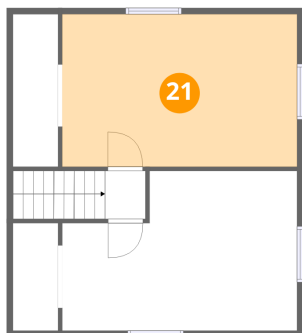
20 Floor 3 - W.I.C.



Dimensions: 3'8" x 12'4"
Area: 45 sq. ft
Counted as living area: Yes

Heated: Yes
Finished: Yes
Enclosed: Yes
Contiguous: Yes
Permitted: Yes
Wet space: No
Addition: No
Conversion: No

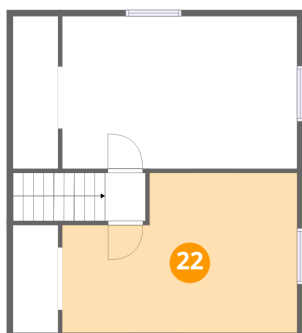
21 Floor 3 - Bedroom



Dimensions: 19'1" x 12'4"
Area: 236 sq. ft
Counted as living area: Yes

Heated: Yes
Finished: Yes
Enclosed: Yes
Contiguous: Yes
Permitted: Yes
Wet space: No
Addition: No
Conversion: No

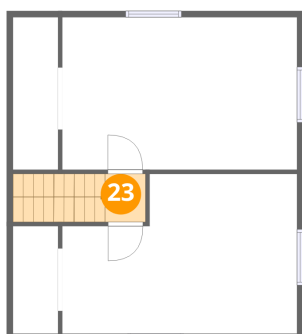
22 Floor 3 - Bedroom



Dimensions: 19'1" x 12'11"
Area: 217 sq. ft
Counted as living area: Yes

Heated: Yes
Finished: Yes
Enclosed: Yes
Contiguous: Yes
Permitted: Yes
Wet space: No
Addition: No
Conversion: No

23 Floor 3 - Hall



Dimensions: 3'3" x 3'10"
Area: 42 sq. ft
Counted as living area: Yes

Heated: Yes
Finished: Yes
Enclosed: Yes
Contiguous: Yes
Permitted: Yes
Wet space: No
Addition: No
Conversion: No