

Home data report

500 Hemlock Dr, Windsor, CO, US



Total Area: 1285 sq. ft

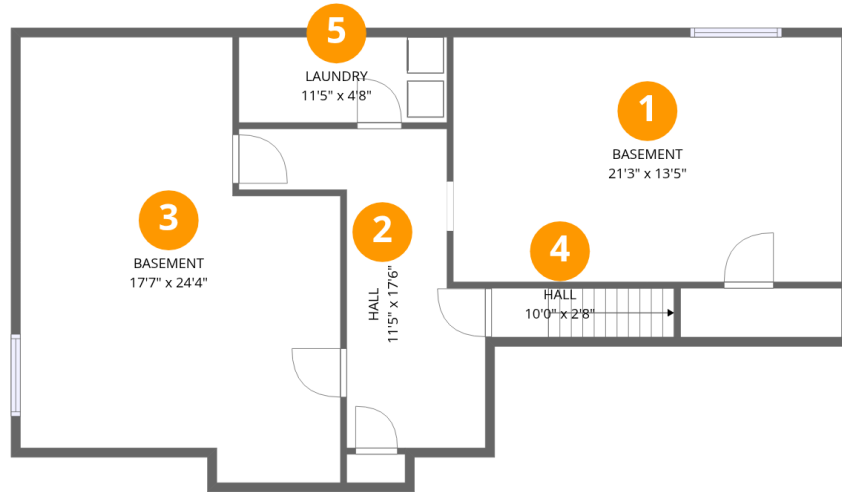
Basement: 241 sq. ft, 1st Floor: 1044 sq. ft

Excluded: Basement 645 sq. ft, Low ceiling 27 sq. ft, Garage 342 sq. ft, Walls: 171 sq. ft

Property summary



500 Hemlock Dr,Windsor,CO,US



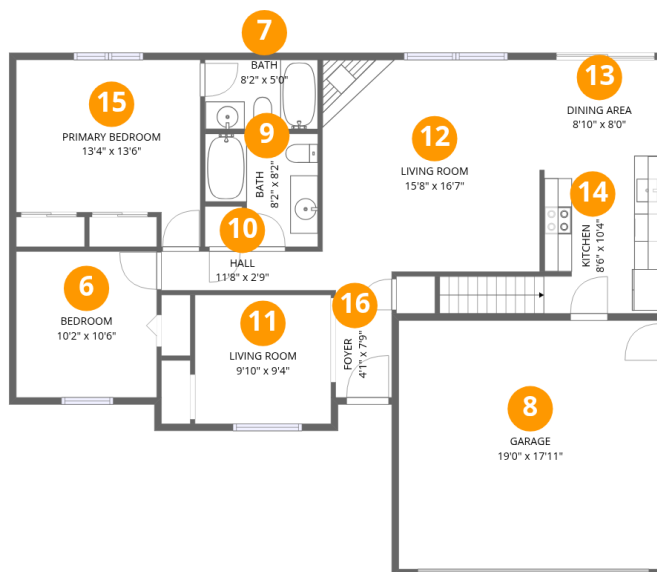
Room dimensions

Floor 1 Below grade

Total:241sqft

Excluded: 672sqft

#		Dimensions	sqft	Counted as living area
1	Basement	21'3" x 13'5"	285 sq. ft	No
2	Hall	11'5" x 17'6"	134 sq. ft	Yes
3	Basement	17'7" x 24'4"	356 sq. ft	No
4	Hall	10'0" x 2'8"	27 sq. ft	No
5	Laundry	11'5" x 4'8"	53 sq. ft	Yes



Room dimensions

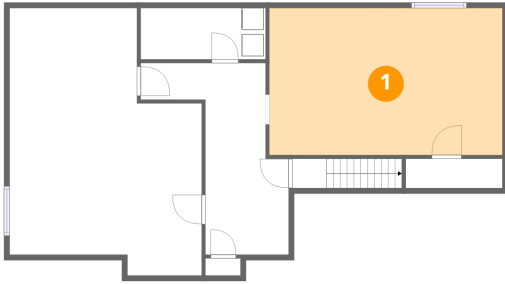
Floor 2

Total:1044sqft

Excluded: 342sqft

#		Dimensions	sqft	Counted as living area
6	Bedroom	10'2" x 10'6"	107 sq. ft	Yes
7	Bath	8'2" x 5'0"	41 sq. ft	Yes
8	Garage	19'0" x 17'11"	342 sq. ft	No
9	Bath	8'2" x 8'2"	57 sq. ft	Yes
10	Hall	11'8" x 2'9"	33 sq. ft	Yes
11	Living Room	9'10" x 9'4"	92 sq. ft	Yes
12	Living Room	15'8" x 16'7"	247 sq. ft	Yes
13	Dining Area	8'10" x 8'0"	70 sq. ft	Yes
14	Kitchen	8'6" x 10'4"	108 sq. ft	Yes
15	Primary Bedroom	13'4" x 13'6"	154 sq. ft	Yes
16	Foyer	4'1" x 7'9"	31 sq. ft	Yes

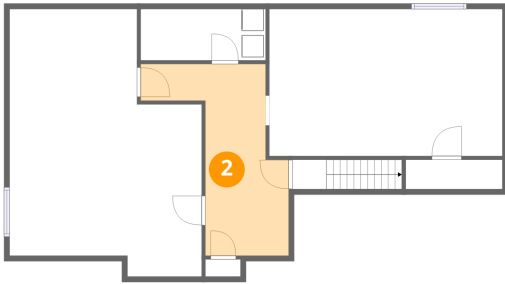
1 Floor 1 - Basement



Dimensions: 21'3" x 13'5"
Area: 285 sq. ft
Counted as living area: No

Heated: Yes
Finished: No
Enclosed: Yes
Contiguous: Yes
Permitted: Yes
Wet space: No
Addition: No
Conversion: No

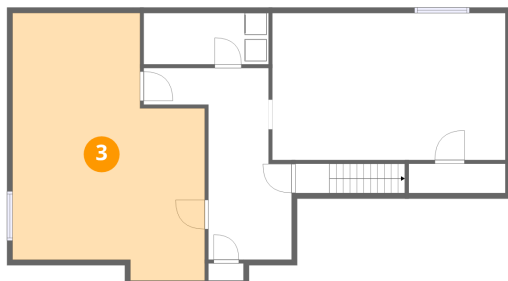
2 Floor 1 - Hall



Dimensions: 11'5" x 17'6"
Area: 134 sq. ft
Counted as living area: Yes

Heated: Yes
Finished: Yes
Enclosed: Yes
Contiguous: Yes
Permitted: Yes
Wet space: No
Addition: No
Conversion: No

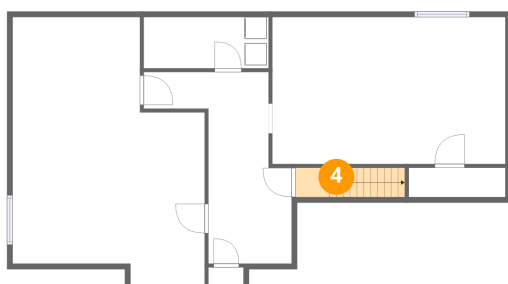
3 Floor 1 - Basement



Dimensions: 17'7" x 24'4"
Area: 356 sq. ft
Counted as living area: No

Heated: Yes
Finished: No
Enclosed: Yes
Contiguous: Yes
Permitted: Yes
Wet space: No
Addition: No
Conversion: No

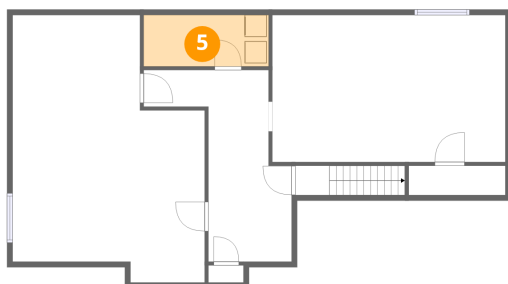
4 Floor 1 - Hall



Dimensions: 10'0" x 2'8"
Area: 27 sq. ft
Counted as living area: No

Heated: Yes
Finished: Yes
Enclosed: Yes
Contiguous: Yes
Permitted: Yes
Wet space: No
Addition: No
Conversion: No

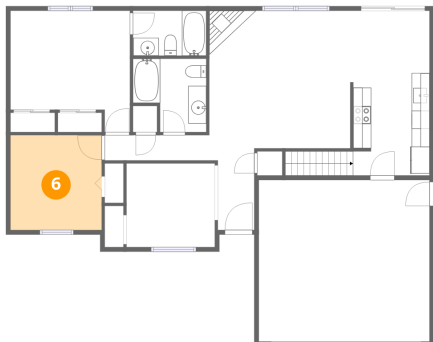
5 Floor 1 - Laundry



Dimensions: 11'5" x 4'8"
Area: 53 sq. ft
Counted as living area: Yes

Heated: Yes
Finished: Yes
Enclosed: Yes
Contiguous: Yes
Permitted: Yes
Wet space: No
Addition: No
Conversion: No

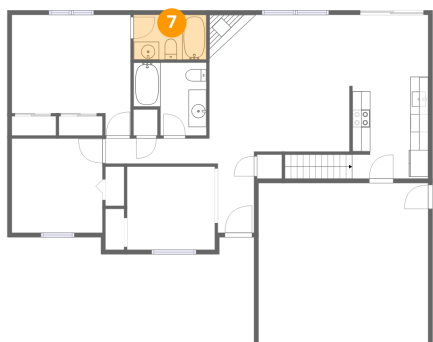
6 Floor 2 - Bedroom



Dimensions: 10'2" x 10'6"
Area: 107 sq. ft
Counted as living area: Yes

Heated: Yes
Finished: Yes
Enclosed: Yes
Contiguous: Yes
Permitted: Yes
Wet space: No
Addition: No
Conversion: No

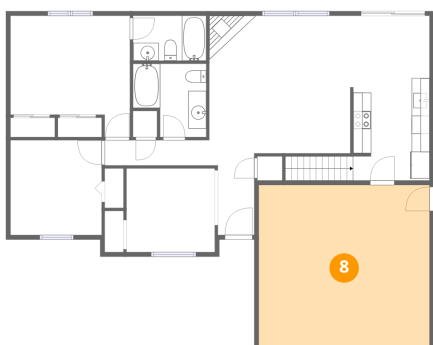
7 Floor 2 - Bath



Dimensions: 8'2" x 5'0"
Area: 41 sq. ft
Counted as living area: Yes

Heated: Yes
Finished: Yes
Enclosed: Yes
Contiguous: Yes
Permitted: Yes
Wet space: Yes
Addition: No
Conversion: No

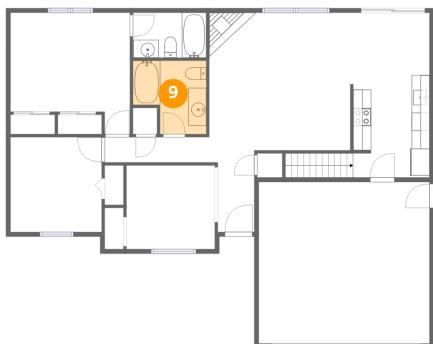
8 Floor 2 - Garage



Dimensions: 19'0" x 17'11"
Area: 342 sq. ft
Counted as living area: No

Heated: No
Finished: No
Enclosed: Yes
Contiguous: Yes
Permitted: Yes
Wet space: No
Addition: No
Conversion: No

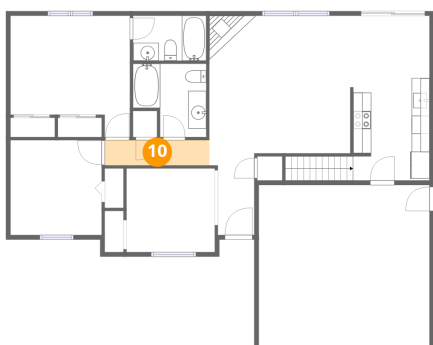
9 Floor 2 - Bath



Dimensions: 8'2" x 8'2"
Area: 57 sq. ft
Counted as living area: Yes

Heated: Yes
Finished: Yes
Enclosed: Yes
Contiguous: Yes
Permitted: Yes
Wet space: Yes
Addition: No
Conversion: No

10 Floor 2 - Hall



Dimensions: 11'8" x 2'9"
Area: 33 sq. ft
Counted as living area: Yes

Heated: Yes
Finished: Yes
Enclosed: Yes
Contiguous: Yes
Permitted: Yes
Wet space: No
Addition: No
Conversion: No

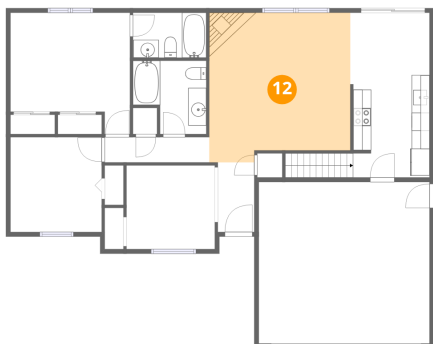
11 Floor 2 - Living Room



Dimensions: 9'10" x 9'4"
Area: 92 sq. ft
Counted as living area: Yes

Heated: Yes
Finished: Yes
Enclosed: Yes
Contiguous: Yes
Permitted: Yes
Wet space: No
Addition: No
Conversion: No

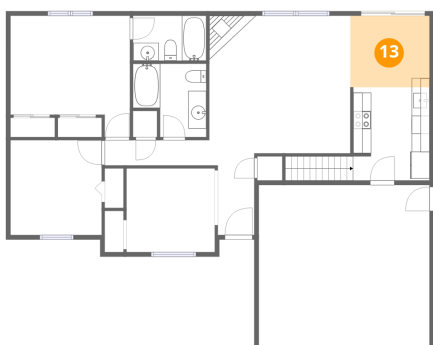
12 Floor 2 - Living Room



Dimensions: 15'8" x 16'7"
Area: 247 sq. ft
Counted as living area: Yes

Heated: Yes
Finished: Yes
Enclosed: Yes
Contiguous: Yes
Permitted: Yes
Wet space: No
Addition: No
Conversion: No

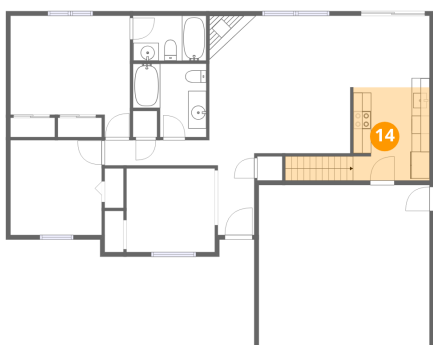
13 Floor 2 - Dining Area



Dimensions: 8'10" x 8'0"
Area: 70 sq. ft
Counted as living area: Yes

Heated: Yes
Finished: Yes
Enclosed: Yes
Contiguous: Yes
Permitted: Yes
Wet space: No
Addition: No
Conversion: No

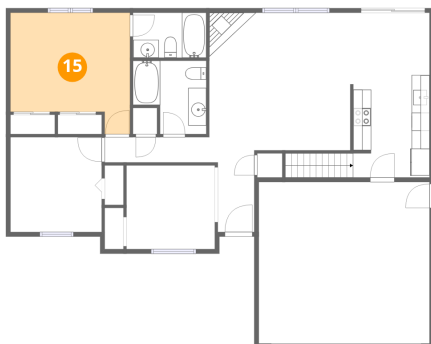
14 Floor 2 - Kitchen



Dimensions: 8'6" x 10'4"
Area: 108 sq. ft
Counted as living area: Yes

Heated: Yes
Finished: Yes
Enclosed: Yes
Contiguous: Yes
Permitted: Yes
Wet space: No
Addition: No
Conversion: No

15 Floor 2 - Primary Bedroom



Dimensions: 13'4" x 13'6"
Area: 154 sq. ft
Counted as living area: Yes

Heated: Yes
Finished: Yes
Enclosed: Yes
Contiguous: Yes
Permitted: Yes
Wet space: No
Addition: No
Conversion: No

16 Floor 2 - Foyer



Dimensions: 4'1" x 7'9"
Area: 31 sq. ft
Counted as living area: Yes

Heated: Yes
Finished: Yes
Enclosed: Yes
Contiguous: Yes
Permitted: Yes
Wet space: No
Addition: No
Conversion: No