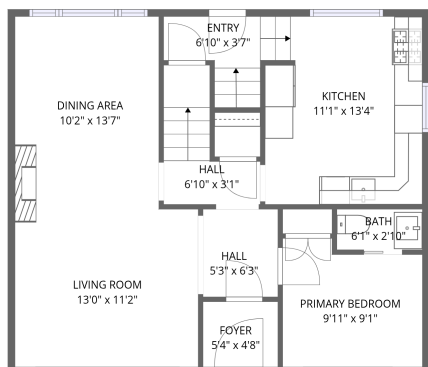
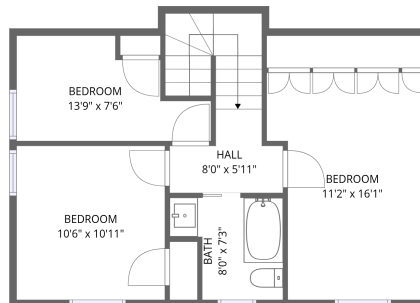


Home data report

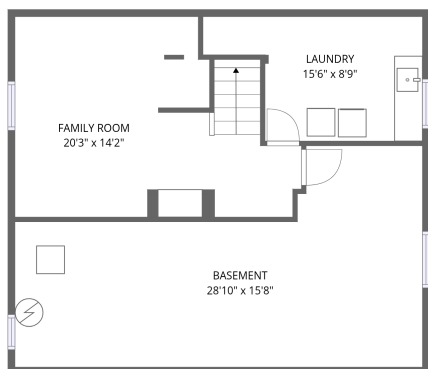
1436 Larose Avenue, Carlington, Ottawa, Ontario, Canada, K1Z 7X8



1st floor



2nd floor



Basement

Total Area: 1642 sq. ft

Basement: 374 sq. ft, 1st Floor: 717 sq. ft, 2nd Floor: 551 sq. ft

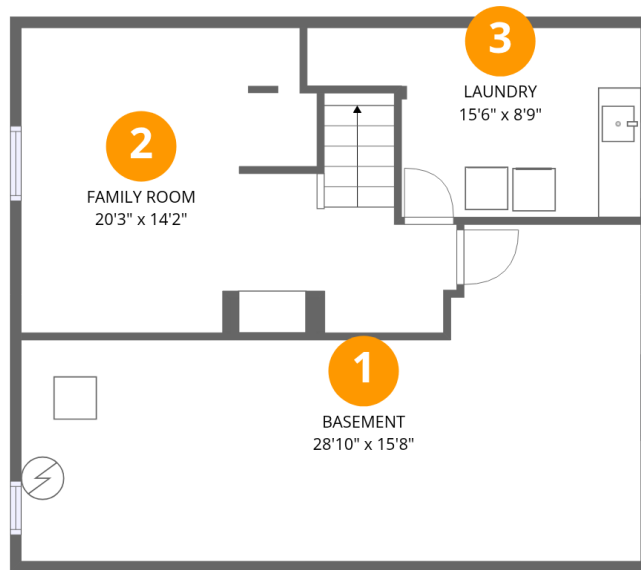
Excluded: Basement 343 sq. ft, Walls: 159 sq. ft

Property summary



Home data report

1436 Larose Avenue, Carlington, Ottawa, Ontario, Canada, K1Z 7X8



Room dimensions

Floor 1 Below grade

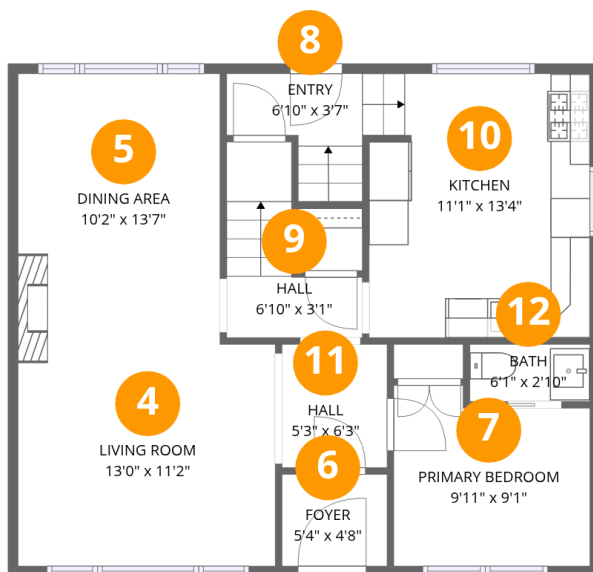
Total:374sqft

Excluded: 343sqft

#		Dimensions	sqft	Counted as living area
1	Basement	28'10" x 15'8"	343 sq. ft	No
2	Family Room	20'3" x 14'2"	243 sq. ft	Yes
3	Laundry	15'6" x 8'9"	110 sq. ft	Yes

Home data report

1436 Larose Avenue, Carlington, Ottawa, Ontario, Canada, K1Z 7X8



Room dimensions

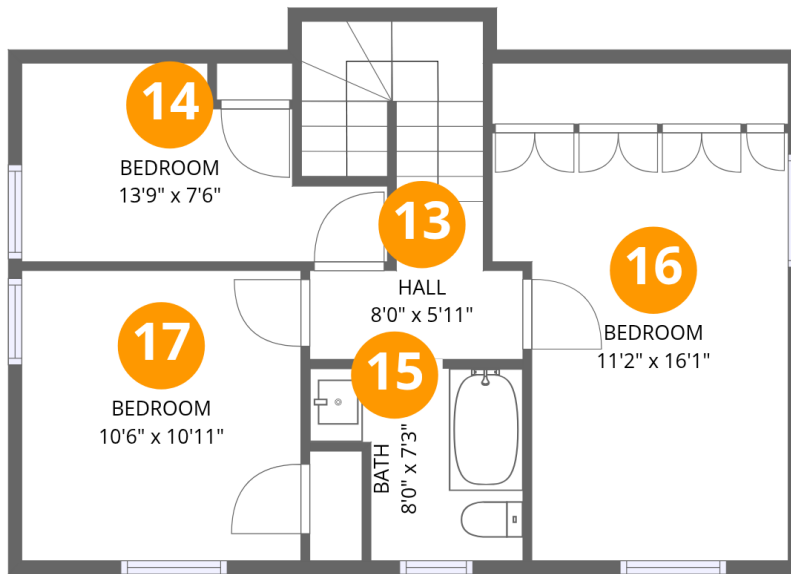
Floor 2

Total:717sqft Excluded: 0sqft

#		Dimensions	sqft	Counted as living area
4	Living Room	13'0" x 11'2"	145 sq. ft	Yes
5	Dining Area	10'2" x 13'7"	139 sq. ft	Yes
6	Foyer	5'4" x 4'8"	25 sq. ft	Yes
7	Primary Bedroom	9'11" x 9'1"	83 sq. ft	Yes
8	Entry	6'10" x 3'7"	32 sq. ft	Yes
9	Hall	6'10" x 3'1"	43 sq. ft	Yes
10	Kitchen	11'1" x 13'4"	149 sq. ft	Yes
11	Hall	5'3" x 6'3"	33 sq. ft	Yes
12	Bath	6'1" x 2'10"	17 sq. ft	Yes

Home data report

1436 Larose Avenue, Carlington, Ottawa, Ontario, Canada, K1Z 7X8



Room dimensions

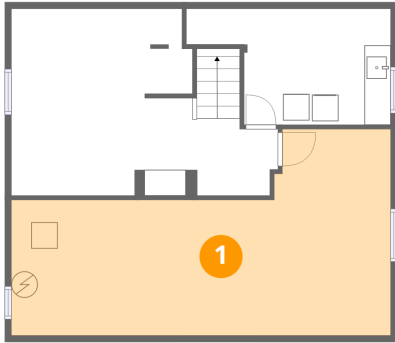
Floor 3

Total:551sqft

Excluded: 0sqft

#		Dimensions	sqft	Counted as living area
13	Hall	8'0" x 5'11"	78 sq. ft	Yes
14	Bedroom	13'9" x 7'6"	81 sq. ft	Yes
15	Bath	8'0" x 7'3"	48 sq. ft	Yes
16	Bedroom	11'2" x 16'1"	163 sq. ft	Yes
17	Bedroom	10'6" x 10'11"	115 sq. ft	Yes

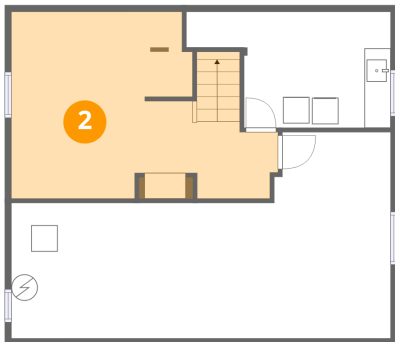
1 Floor 1 - Basement



Dimensions: 28'10" x 15'8"
Area: 343 sq. ft
Counted as living area: No

Heated: Yes
Finished: No
Enclosed: Yes
Contiguous: Yes
Permitted: Yes
Wet space: No
Addition: No
Conversion: No

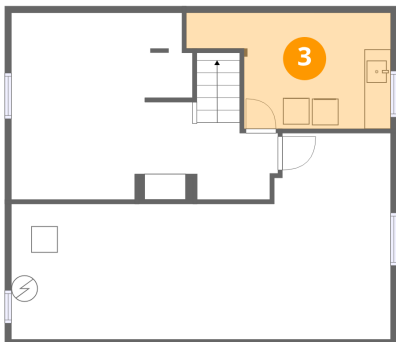
2 Floor 1 - Family Room



Dimensions: 20'3" x 14'2"
Area: 243 sq. ft
Counted as living area: No

Heated: Yes
Finished: Yes
Enclosed: Yes
Contiguous: No
Permitted: Yes
Wet space: No
Addition: No
Conversion: No

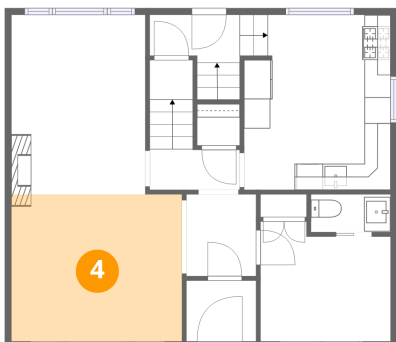
3 Floor 1 - Laundry



Dimensions: 15'6" x 8'9"
Area: 110 sq. ft
Counted as living area: No

Heated: Yes
Finished: Yes
Enclosed: Yes
Contiguous: No
Permitted: Yes
Wet space: No
Addition: No
Conversion: No

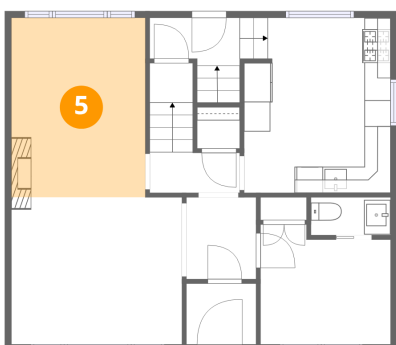
4 Floor 2 - Living Room



Dimensions: 13'0" x 11'2"
Area: 145 sq. ft
Counted as living area: Yes

Heated: Yes
Finished: Yes
Enclosed: Yes
Contiguous: Yes
Permitted: Yes
Wet space: No
Addition: No
Conversion: No

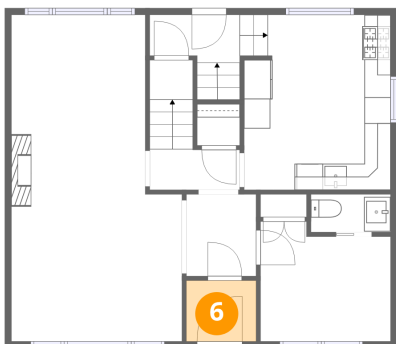
5 Floor 2 - Dining Area



Dimensions: 10'2" x 13'7"
Area: 139 sq. ft
Counted as living area: Yes

Heated: Yes
Finished: Yes
Enclosed: Yes
Contiguous: Yes
Permitted: Yes
Wet space: No
Addition: No
Conversion: No

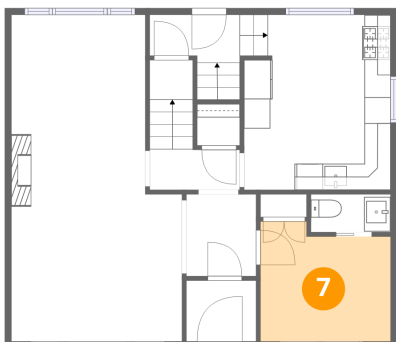
6 Floor 2 - Foyer



Dimensions: 5'4" x 4'8"
Area: 25 sq. ft
Counted as living area: Yes

Heated: Yes
Finished: Yes
Enclosed: Yes
Contiguous: Yes
Permitted: Yes
Wet space: No
Addition: No
Conversion: No

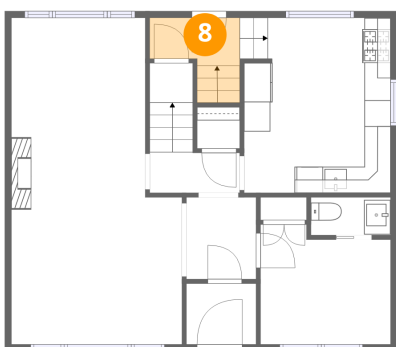
7 Floor 2 - Primary Bedroom



Dimensions: 9'11" x 9'1"
Area: 83 sq. ft
Counted as living area: Yes

Heated: Yes
Finished: Yes
Enclosed: Yes
Contiguous: Yes
Permitted: Yes
Wet space: No
Addition: No
Conversion: No

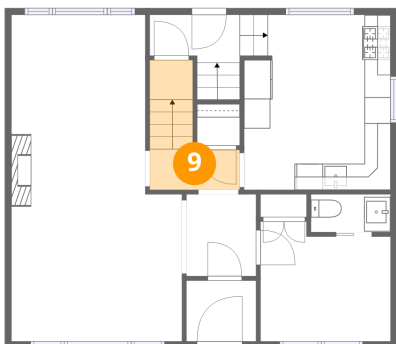
8 Floor 2 - Entry



Dimensions: 6'10" x 3'7"
Area: 32 sq. ft
Counted as living area: Yes

Heated: Yes
Finished: Yes
Enclosed: Yes
Contiguous: Yes
Permitted: Yes
Wet space: No
Addition: No
Conversion: No

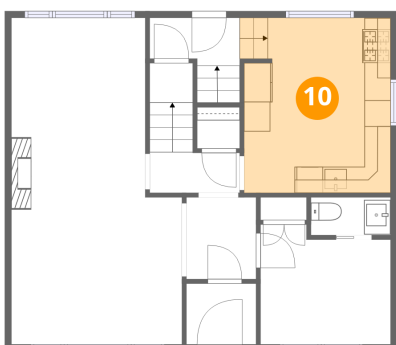
9 Floor 2 - Hall



Dimensions: 6'10" x 3'1"
Area: 43 sq. ft
Counted as living area: Yes

Heated: Yes
Finished: Yes
Enclosed: Yes
Contiguous: Yes
Permitted: Yes
Wet space: No
Addition: No
Conversion: No

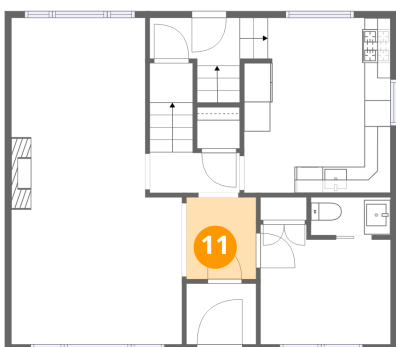
10 Floor 2 - Kitchen



Dimensions: 11'1" x 13'4"
Area: 149 sq. ft
Counted as living area: Yes

Heated: Yes
Finished: Yes
Enclosed: Yes
Contiguous: Yes
Permitted: Yes
Wet space: No
Addition: No
Conversion: No

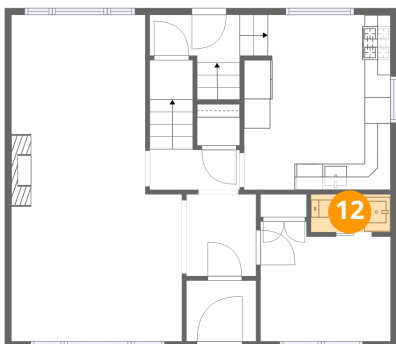
11 Floor 2 - Hall



Dimensions: 5'3" x 6'3"
Area: 33 sq. ft
Counted as living area: Yes

Heated: Yes
Finished: Yes
Enclosed: Yes
Contiguous: Yes
Permitted: Yes
Wet space: No
Addition: No
Conversion: No

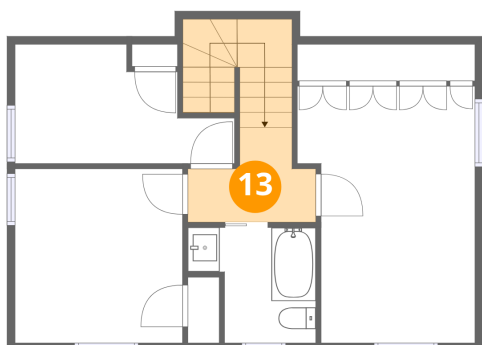
12 Floor 2 - Bath



Dimensions: 6'1" x 2'10"
Area: 17 sq. ft
Counted as living area: Yes

Heated: Yes
Finished: Yes
Enclosed: Yes
Contiguous: Yes
Permitted: Yes
Wet space: Yes
Addition: No
Conversion: No

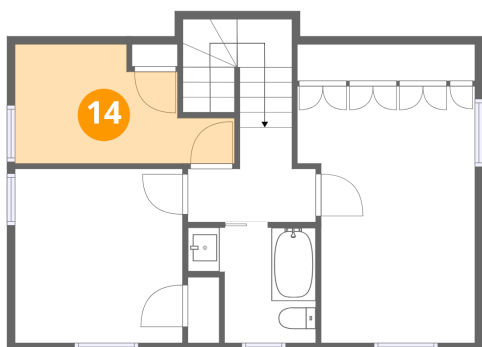
13 Floor 3 - Hall



Dimensions: 8'0" x 5'11"
Area: 78 sq. ft
Counted as living area: Yes

Heated: Yes
Finished: Yes
Enclosed: Yes
Contiguous: Yes
Permitted: Yes
Wet space: No
Addition: No
Conversion: No

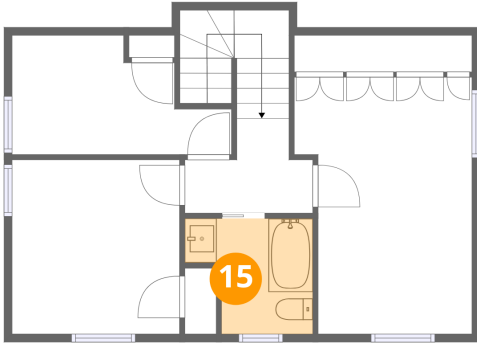
14 Floor 3 - Bedroom



Dimensions: 13'9" x 7'6"
Area: 81 sq. ft
Counted as living area: Yes

Heated: Yes
Finished: Yes
Enclosed: Yes
Contiguous: Yes
Permitted: Yes
Wet space: No
Addition: No
Conversion: No

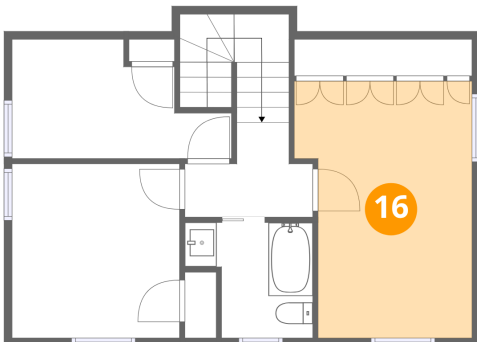
15 Floor 3 - Bath



Dimensions: 8'0" x 7'3"
Area: 48 sq. ft
Counted as living area: Yes

Heated: Yes
Finished: Yes
Enclosed: Yes
Contiguous: Yes
Permitted: Yes
Wet space: Yes
Addition: No
Conversion: No

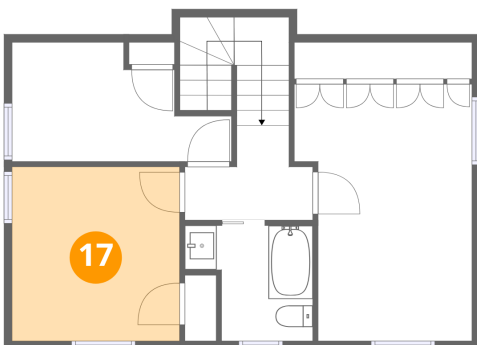
16 Floor 3 - Bedroom



Dimensions: 11'2" x 16'1"
Area: 163 sq. ft
Counted as living area: Yes

Heated: Yes
Finished: Yes
Enclosed: Yes
Contiguous: Yes
Permitted: Yes
Wet space: No
Addition: No
Conversion: No

17 Floor 3 - Bedroom



Dimensions: 10'6" x 10'11"
Area: 115 sq. ft
Counted as living area: Yes

Heated: Yes
Finished: Yes
Enclosed: Yes
Contiguous: Yes
Permitted: Yes
Wet space: No
Addition: No
Conversion: No