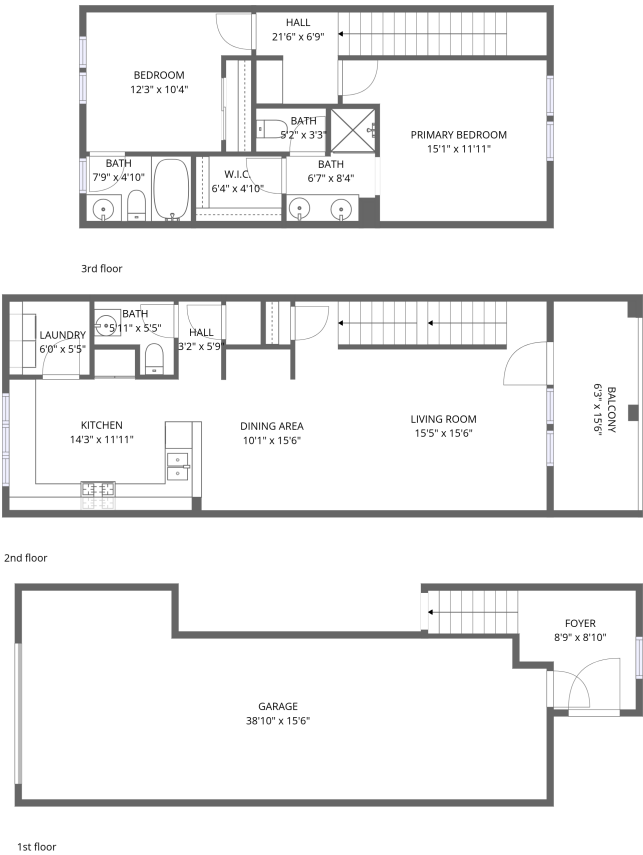


Home data report

955 Sweetbriar Lane, Azusa, Los Angeles County, California,
United States, 91702, E




Total Area: 1235 sq. ft

1st Floor: 89 sq. ft, 2nd Floor: 618 sq. ft, 3rd Floor: 528 sq. ft

Excluded: Garage 497 sq. ft, Balcony 97 sq. ft, Walls: 129 sq. ft

Property summary

 3 Floors

 2 Bedrooms

 2 Bathrooms

Home data report

**955 Sweetbriar Lane, Azusa, Los Angeles County, California,
United States, 91702, E**

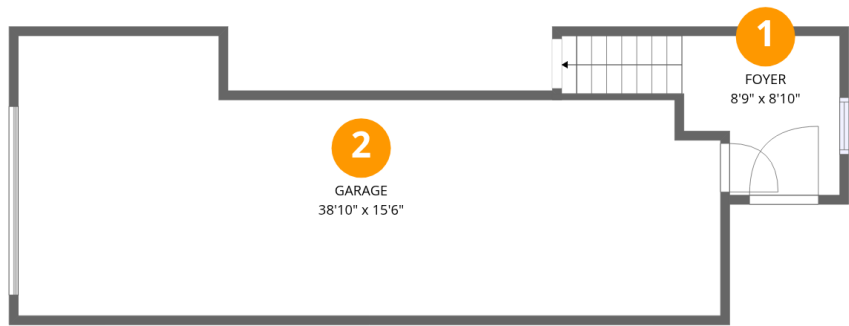


1
Half baths



1
Garages

955 Sweetbriar Lane, Azusa, Los Angeles County, California,
United States, 91702, E



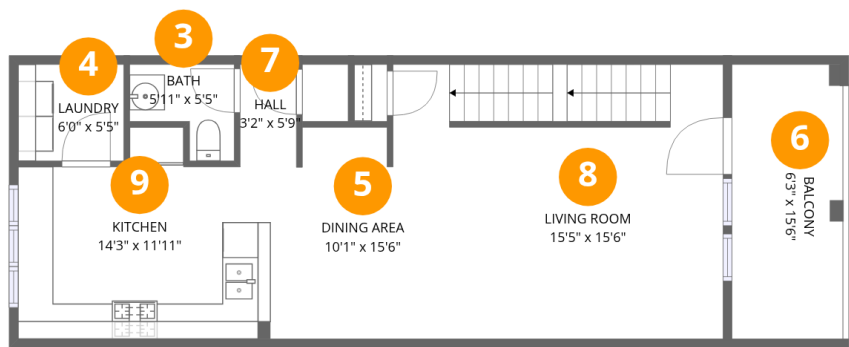
Room dimensions

Floor 1 Total:89sqft Excluded: 497sqft

#		Dimensions	sqft	Counted as living area
1	Foyer	8'9" x 8'10"	89 sq. ft	Yes
2	Garage	38'10" x 15'6"	497 sq. ft	No

Home data report

955 Sweetbriar Lane, Azusa, Los Angeles County, California,
United States, 91702, E



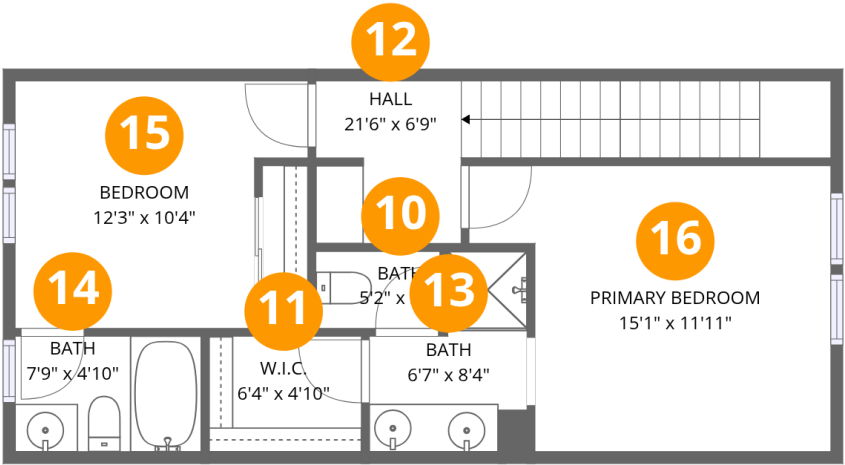
Room dimensions

Floor 2 Total:618sqft Excluded: 97sqft

#		Dimensions	sqft	Counted as living area
3	Bath	5'11" x 5'5"	25 sq. ft	Yes
4	Laundry	6'0" x 5'5"	32 sq. ft	Yes
5	Dining Area	10'1" x 15'6"	127 sq. ft	Yes
6	Balcony	6'3" x 15'6"	97 sq. ft	No
7	Hall	3'2" x 5'9"	18 sq. ft	Yes
8	Living Room	15'5" x 15'6"	241 sq. ft	Yes
9	Kitchen	14'3" x 11'11"	145 sq. ft	Yes

Home data report

955 Sweetbriar Lane, Azusa, Los Angeles County, California,
United States, 91702, E



Room dimensions

Floor 3 Total:528sqft Excluded: 0sqft

#		Dimensions	sqft	Counted as living area
10	Bath	5'2" x 3'3"	17 sq. ft	Yes
11	W.I.C.	6'4" x 4'10"	31 sq. ft	Yes
12	Hall	21'6" x 6'9"	90 sq. ft	Yes
13	Bath	6'7" x 8'4"	41 sq. ft	Yes
14	Bath	7'9" x 4'10"	37 sq. ft	Yes
15	Bedroom	12'3" x 10'4"	110 sq. ft	Yes
16	Primary Bedroom	15'1" x 11'11"	156 sq. ft	Yes

955 Sweetbriar Lane, Azusa, Los Angeles County, California,
United States, 91702, E

1 Floor 1 - Foyer



Dimensions: 8'9" x 8'10"
Area: 89 sq. ft
Counted as living area: Yes

Heated: Yes
Finished: Yes
Enclosed: Yes
Contiguous: Yes
Permitted: Yes
Wet space: No
Addition: No
Conversion: No

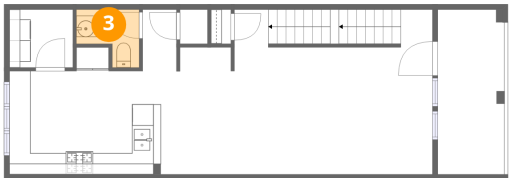
2 Floor 1 - Garage



Dimensions: 38'10" x 15'6"
Area: 497 sq. ft
Counted as living area: No

Heated: No
Finished: No
Enclosed: Yes
Contiguous: Yes
Permitted: Yes
Wet space: No
Addition: No
Conversion: No

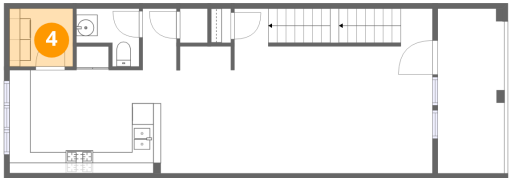
3 Floor 2 - Bath



Dimensions: 5'11" x 5'5"
Area: 25 sq. ft
Counted as living area: Yes

Heated: Yes
Finished: Yes
Enclosed: Yes
Contiguous: Yes
Permitted: Yes
Wet space: Yes
Addition: No
Conversion: No

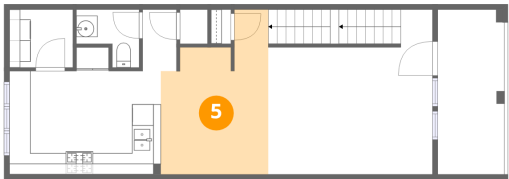
4 Floor 2 - Laundry



Dimensions: 6'0" x 5'5"
Area: 32 sq. ft
Counted as living area: Yes

Heated: Yes
Finished: Yes
Enclosed: Yes
Contiguous: Yes
Permitted: Yes
Wet space: No
Addition: No
Conversion: No

5 Floor 2 - Dining Area



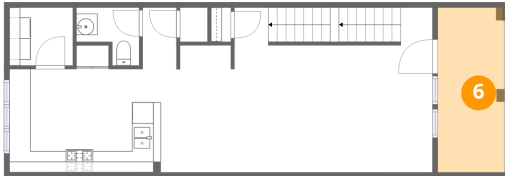
Dimensions: 10'1" x 15'6"
Area: 127 sq. ft
Counted as living area: Yes

Heated: Yes
Finished: Yes
Enclosed: Yes
Contiguous: Yes
Permitted: Yes
Wet space: No
Addition: No
Conversion: No

Home data report

955 Sweetbriar Lane, Azusa, Los Angeles County, California,
United States, 91702, E

6 Floor 2 - Balcony



Dimensions: 6'3" x 15'6"
Area: 97 sq. ft
Counted as living area: No

Heated: No
Finished: No
Enclosed: No
Contiguous: Yes
Permitted: Yes
Wet space: No
Addition: No
Conversion: No

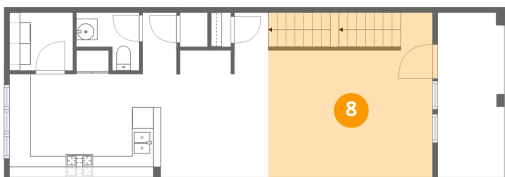
7 Floor 2 - Hall



Dimensions: 3'2" x 5'9"
Area: 18 sq. ft
Counted as living area: Yes

Heated: Yes
Finished: Yes
Enclosed: Yes
Contiguous: Yes
Permitted: Yes
Wet space: No
Addition: No
Conversion: No

8 Floor 2 - Living Room



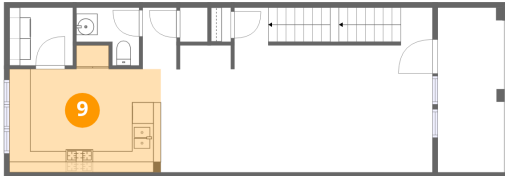
Dimensions: 15'5" x 15'6"
Area: 241 sq. ft
Counted as living area: Yes

Heated: Yes
Finished: Yes
Enclosed: Yes
Contiguous: Yes
Permitted: Yes
Wet space: No
Addition: No
Conversion: No

Home data report

955 Sweetbriar Lane, Azusa, Los Angeles County, California,
United States, 91702, E

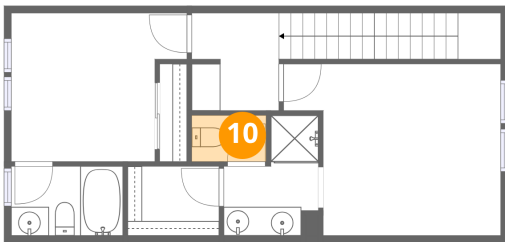
9 Floor 2 - Kitchen



Dimensions: 14'3" x 11'11"
Area: 145 sq. ft
Counted as living area: Yes

Heated: Yes
Finished: Yes
Enclosed: Yes
Contiguous: Yes
Permitted: Yes
Wet space: No
Addition: No
Conversion: No

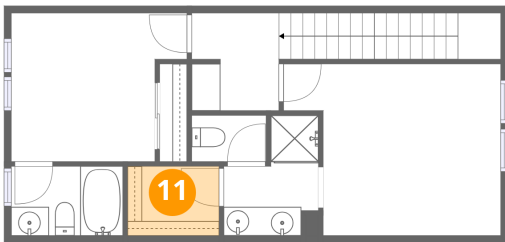
10 Floor 3 - Bath



Dimensions: 5'2" x 3'3"
Area: 17 sq. ft
Counted as living area: Yes

Heated: Yes
Finished: Yes
Enclosed: Yes
Contiguous: Yes
Permitted: Yes
Wet space: Yes
Addition: No
Conversion: No

11 Floor 3 - W.I.C.



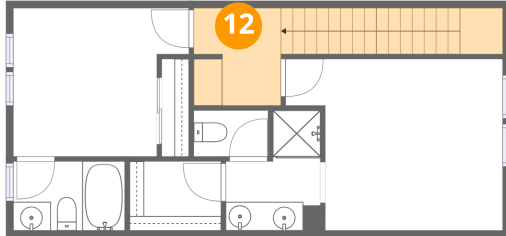
Dimensions: 6'4" x 4'10"
Area: 31 sq. ft
Counted as living area: Yes

Heated: Yes
Finished: Yes
Enclosed: Yes
Contiguous: Yes
Permitted: Yes
Wet space: No
Addition: No
Conversion: No

Home data report

955 Sweetbriar Lane, Azusa, Los Angeles County, California,
United States, 91702, E

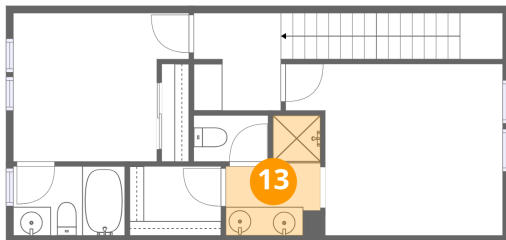
12 Floor 3 - Hall



Dimensions: 21'6" x 6'9"
Area: 90 sq. ft
Counted as living area: Yes

Heated: Yes
Finished: Yes
Enclosed: Yes
Contiguous: Yes
Permitted: Yes
Wet space: No
Addition: No
Conversion: No

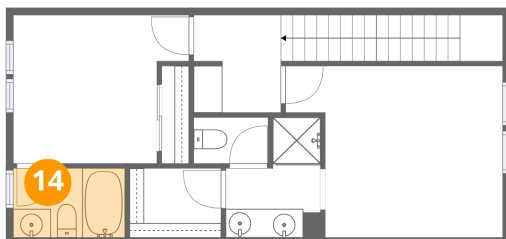
13 Floor 3 - Bath



Dimensions: 6'7" x 8'4"
Area: 41 sq. ft
Counted as living area: Yes

Heated: Yes
Finished: Yes
Enclosed: Yes
Contiguous: Yes
Permitted: Yes
Wet space: Yes
Addition: No
Conversion: No

14 Floor 3 - Bath

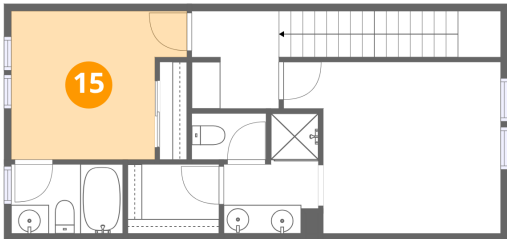


Dimensions: 7'9" x 4'10"
Area: 37 sq. ft
Counted as living area: Yes

Heated: Yes
Finished: Yes
Enclosed: Yes
Contiguous: Yes
Permitted: Yes
Wet space: Yes
Addition: No
Conversion: No

955 Sweetbriar Lane, Azusa, Los Angeles County, California,
United States, 91702, E

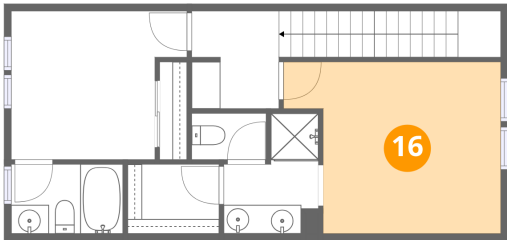
15 Floor 3 - Bedroom



Dimensions: 12'3" x 10'4"
Area: 110 sq. ft
Counted as living area: Yes

Heated: Yes
Finished: Yes
Enclosed: Yes
Contiguous: Yes
Permitted: Yes
Wet space: No
Addition: No
Conversion: No

16 Floor 3 - Primary Bedroom



Dimensions: 15'1" x 11'11"
Area: 156 sq. ft
Counted as living area: Yes

Heated: Yes
Finished: Yes
Enclosed: Yes
Contiguous: Yes
Permitted: Yes
Wet space: No
Addition: No
Conversion: No