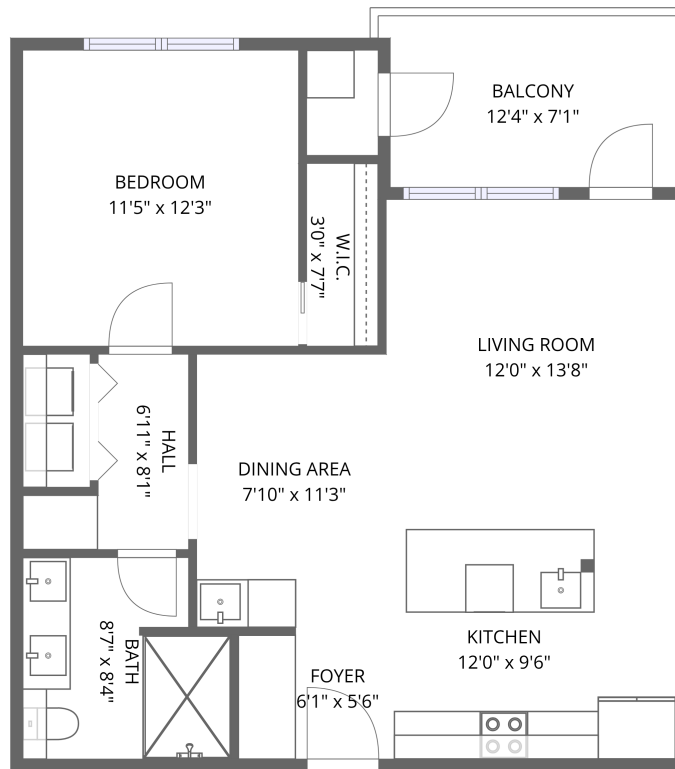


Home data report

5000 Culbreath Key Way, Bayside West, Tampa, Hillsborough County, Florida, United States, 33611, unit 9116



1st floor

Total Area: 705 sq. ft

1st Floor: 705 sq. ft

Excluded: Undefined 13 sq. ft, Balcony 85 sq. ft, Walls: 0 sq. ft

Property summary

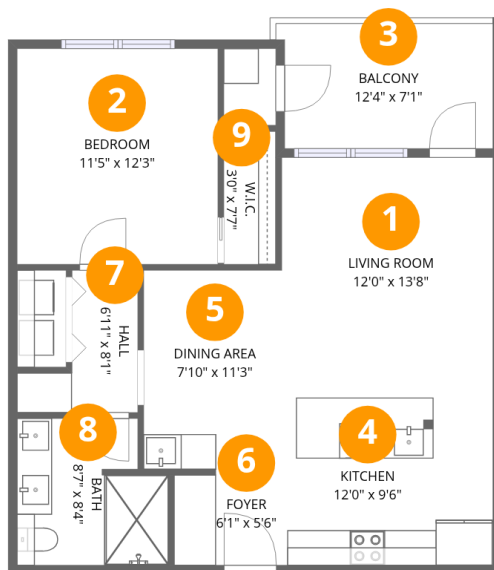
 **1** Floors

 **1** Bedrooms

 **1** Bathrooms

Home data report

5000 Culbreath Key Way, Bayside West, Tampa, Hillsborough County, Florida, United States, 33611, unit 9116



Room dimensions

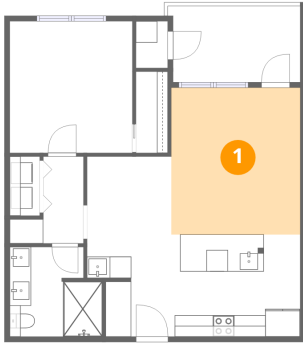
Floor 1

Total:705sqft Excluded: 98sqft

#		Dimensions	sqft	Counted as living area
1	Living Room	12'0" x 13'8"	165 sq. ft	Yes
2	Bedroom	11'5" x 12'3"	141 sq. ft	Yes
3	Balcony	12'4" x 7'1"	85 sq. ft	No
4	Kitchen	12'0" x 9'6"	115 sq. ft	Yes
5	Dining Area	7'10" x 11'3"	89 sq. ft	Yes
6	Foyer	6'1" x 5'6"	33 sq. ft	Yes
7	Hall	6'11" x 8'1"	37 sq. ft	Yes
8	Bath	8'7" x 8'4"	66 sq. ft	Yes
9	W.I.C.	3'0" x 7'7"	22 sq. ft	Yes

5000 Culbreath Key Way, Bayside West, Tampa, Hillsborough County, Florida, United States, 33611, unit 9116

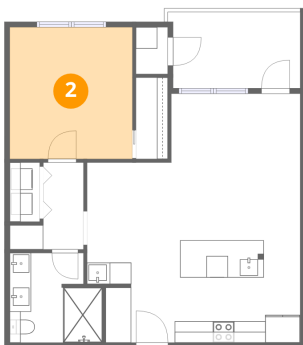
1 Floor 1 - Living Room



Dimensions: 12'0" x 13'8"
Area: 165 sq. ft
Counted as living area: Yes

Heated: Yes
Finished: Yes
Enclosed: Yes
Contiguous: Yes
Permitted: Yes
Wet space: No
Addition: No
Conversion: No

2 Floor 1 - Bedroom

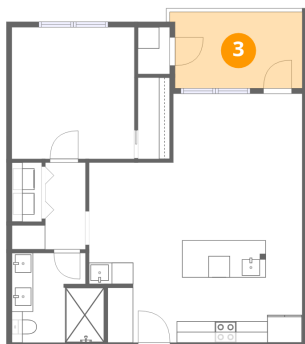


Dimensions: 11'5" x 12'3"
Area: 141 sq. ft
Counted as living area: Yes

Heated: Yes
Finished: Yes
Enclosed: Yes
Contiguous: Yes
Permitted: Yes
Wet space: No
Addition: No
Conversion: No

5000 Culbreath Key Way, Bayside West, Tampa, Hillsborough County, Florida, United States, 33611, unit 9116

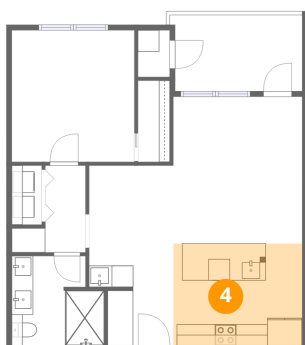
3 Floor 1 - Balcony



Dimensions: 12'4" x 7'1"
Area: 85 sq. ft
Counted as living area: No

Heated: No
Finished: No
Enclosed: No
Contiguous: Yes
Permitted: Yes
Wet space: No
Addition: No
Conversion: No

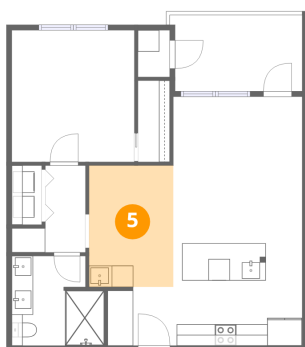
4 Floor 1 - Kitchen



Dimensions: 12'0" x 9'6"
Area: 115 sq. ft
Counted as living area: Yes

Heated: Yes
Finished: Yes
Enclosed: Yes
Contiguous: Yes
Permitted: Yes
Wet space: No
Addition: No
Conversion: No

5 Floor 1 - Dining Area

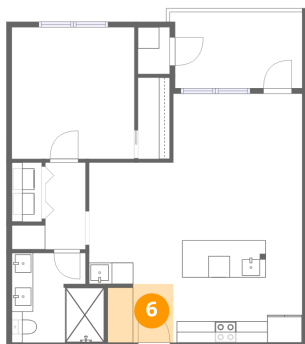


Dimensions: 7'10" x 11'3"
Area: 89 sq. ft
Counted as living area: Yes

Heated: Yes
Finished: Yes
Enclosed: Yes
Contiguous: Yes
Permitted: Yes
Wet space: No
Addition: No
Conversion: No

5000 Culbreath Key Way, Bayside West, Tampa, Hillsborough County, Florida, United States, 33611, unit 9116

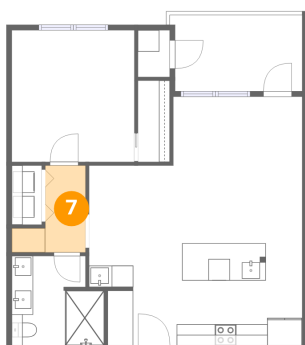
6 Floor 1 - Foyer



Dimensions: 6'1" x 5'6"
Area: 33 sq. ft
Counted as living area: Yes

Heated: Yes
Finished: Yes
Enclosed: Yes
Contiguous: Yes
Permitted: Yes
Wet space: No
Addition: No
Conversion: No

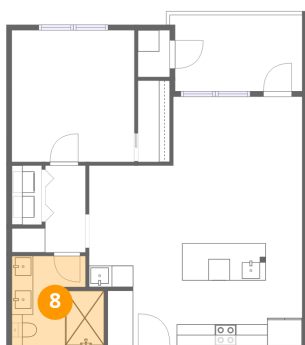
7 Floor 1 - Hall



Dimensions: 6'11" x 8'1"
Area: 37 sq. ft
Counted as living area: Yes

Heated: Yes
Finished: Yes
Enclosed: Yes
Contiguous: Yes
Permitted: Yes
Wet space: No
Addition: No
Conversion: No

8 Floor 1 - Bath



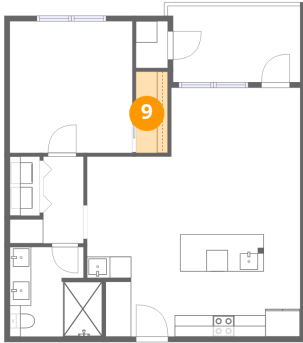
Dimensions: 8'7" x 8'4"
Area: 66 sq. ft
Counted as living area: Yes

Heated: Yes
Finished: Yes
Enclosed: Yes
Contiguous: Yes
Permitted: Yes
Wet space: Yes
Addition: No
Conversion: No

Home data report

5000 Culbreath Key Way, Bayside West, Tampa, Hillsborough County, Florida, United States, 33611, unit 9116

9 Floor 1 - W.I.C.



Dimensions: 3'0" x 7'7"
Area: 22 sq. ft
Counted as living area: Yes

Heated: Yes
Finished: Yes
Enclosed: Yes
Contiguous: Yes
Permitted: Yes
Wet space: No
Addition: No
Conversion: No