

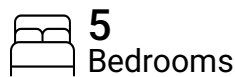


## Total Area: 4113 sq. ft

1st Floor: 2658 sq. ft, 2nd Floor: 1455 sq. ft

Excluded: Garage 719 sq. ft, Porch 174 sq. ft, Patio 131 sq. ft, Open to below 450 sq. ft, Low ceiling 76 sq. ft, Attic 306 sq. ft


## Property summary



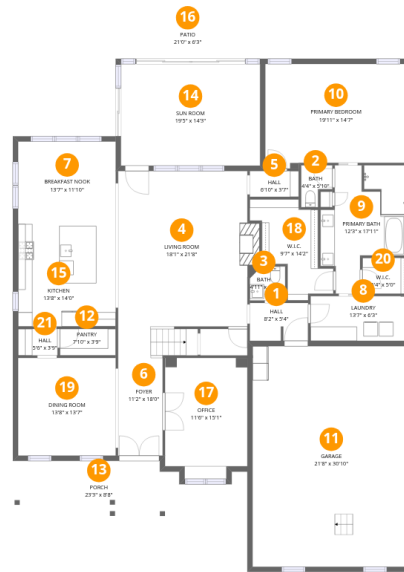
Home data report

**168 River Mill Road, Mt. Carmel by the River,  
Huntsville, Madison County, Alabama, United States,**



 **1**  
Half baths

 **1**  
Garages



## Room dimensions

Floor 1

Total:2658sqft

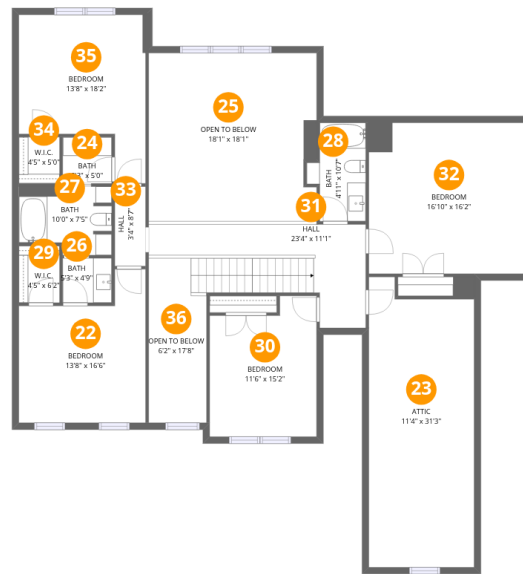
Excluded: 1024sqft

#		Dimensions	sqft	Counted as living area
1	Hall	8'2" x 5'4"	43 sq. ft	Yes
2	Bath	4'4" x 5'10"	25 sq. ft	Yes
3	Bath	4'11" x 4'9"	24 sq. ft	Yes
4	Living Room	18'1" x 21'8"	392 sq. ft	Yes
5	Hall	6'10" x 3'7"	25 sq. ft	Yes
6	Foyer	11'2" x 18'0"	201 sq. ft	Yes
7	Breakfast Nook	13'7" x 11'10"	161 sq. ft	Yes
8	Laundry	13'7" x 6'3"	85 sq. ft	Yes
9	Primary Bath	12'3" x 17'11"	219 sq. ft	Yes
10	Primary Bedroom	19'11" x 14'7"	291 sq. ft	Yes
11	Garage	21'8" x 30'10"	669 sq. ft	No



# 168 River Mill Road, Mt. Carmel by the River, Huntsville, Madison County, Alabama, United States,

#		Dimensions	sqft	Counted as living area
12	Pantry	7'10" x 3'9"	29 sq. ft	Yes
13	Porch	23'3" x 8'8"	201 sq. ft	No
14	Sun Room	19'5" x 14'3"	276 sq. ft	Yes
15	Kitchen	13'8" x 14'0"	191 sq. ft	Yes
16	Patio	21'0" x 6'3"	131 sq. ft	No
17	Office	11'6" x 15'1"	174 sq. ft	Yes
18	W.I.C.	9'7" x 14'2"	135 sq. ft	Yes
19	Dining Room	13'8" x 13'7"	186 sq. ft	Yes
20	W.I.C.	6'4" x 5'0"	32 sq. ft	Yes
21	Hall	5'6" x 3'9"	20 sq. ft	Yes



## Room dimensions

Floor 2

Total:1455sqft

Excluded: 832sqft

#		Dimensions	sqft	Counted as living area
22	Bedroom	13'8" x 16'6"	225 sq. ft	Yes
23	Attic	11'4" x 31'3"	354 sq. ft	No
24	Bath	5'3" x 5'0"	26 sq. ft	Yes
25	Open To Below	18'1" x 18'1"	326 sq. ft	No
26	Bath	5'3" x 4'9"	25 sq. ft	Yes
27	Bath	10'0" x 7'5"	74 sq. ft	Yes
28	Bath	4'11" x 10'7"	52 sq. ft	Yes
29	W.I.C.	4'5" x 6'2"	27 sq. ft	Yes
30	Bedroom	11'6" x 15'2"	174 sq. ft	Yes
31	Hall	23'4" x 11'1"	259 sq. ft	Yes
32	Bedroom	16'10" x 16'2"	273 sq. ft	Yes



**168 River Mill Road, Mt. Carmel by the River,  
Huntsville, Madison County, Alabama, United States,**

#		Dimensions	sqft	Counted as living area
33	Hall	3'4" x 8'7"	28 sq. ft	Yes
34	W.I.C.	4'5" x 5'0"	22 sq. ft	Yes
35	Bedroom	13'8" x 18'2"	247 sq. ft	Yes
36	Open To Below	6'2" x 17'8"	110 sq. ft	No



## 1 Floor 1 - Hall



Dimensions: 8'2" x 5'4"  
Area: 43 sq. ft  
Counted as living area: Yes

Heated: Yes  
Finished: Yes  
Enclosed: Yes  
Contiguous: Yes  
Permitted: Yes  
Wet space: No  
Addition: No  
Conversion: No

## 2 Floor 1 - Bath



Dimensions: 4'4" x 5'10"  
Area: 25 sq. ft  
Counted as living area: Yes

Heated: Yes  
Finished: Yes  
Enclosed: Yes  
Contiguous: Yes  
Permitted: Yes  
Wet space: Yes  
Addition: No  
Conversion: No



### 3 Floor 1 - Bath



Dimensions: 4'11" x 4'9"  
Area: 24 sq. ft  
Counted as living area: Yes

Heated: Yes  
Finished: Yes  
Enclosed: Yes  
Contiguous: Yes  
Permitted: Yes  
Wet space: Yes  
Addition: No  
Conversion: No

### 4 Floor 1 - Living Room



Dimensions: 18'1" x 21'8"  
Area: 392 sq. ft  
Counted as living area: Yes

Heated: Yes  
Finished: Yes  
Enclosed: Yes  
Contiguous: Yes  
Permitted: Yes  
Wet space: No  
Addition: No  
Conversion: No

### 5 Floor 1 - Hall



Dimensions: 6'10" x 3'7"  
Area: 25 sq. ft  
Counted as living area: Yes

Heated: Yes  
Finished: Yes  
Enclosed: Yes  
Contiguous: Yes  
Permitted: Yes  
Wet space: No  
Addition: No  
Conversion: No



## 6 Floor 1 - Foyer



Dimensions: 11'2" x 18'0"  
Area: 201 sq. ft  
Counted as living area: Yes

Heated: Yes  
Finished: Yes  
Enclosed: Yes  
Contiguous: Yes  
Permitted: Yes  
Wet space: No  
Addition: No  
Conversion: No

## 7 Floor 1 - Breakfast Nook



Dimensions: 13'7" x 11'10"  
Area: 161 sq. ft  
Counted as living area: Yes

Heated: Yes  
Finished: Yes  
Enclosed: Yes  
Contiguous: Yes  
Permitted: Yes  
Wet space: No  
Addition: No  
Conversion: No

## 8 Floor 1 - Laundry



Dimensions: 13'7" x 6'3"  
Area: 85 sq. ft  
Counted as living area: Yes

Heated: Yes  
Finished: Yes  
Enclosed: Yes  
Contiguous: Yes  
Permitted: Yes  
Wet space: No  
Addition: No  
Conversion: No



### 9 Floor 1 - Primary Bath



Dimensions: 12'3" x 17'11"  
Area: 219 sq. ft  
Counted as living area: Yes

Heated: Yes  
Finished: Yes  
Enclosed: Yes  
Contiguous: Yes  
Permitted: Yes  
Wet space: Yes  
Addition: No  
Conversion: No

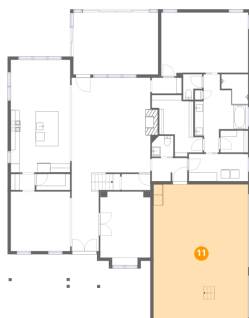
### 10 Floor 1 - Primary Bedroom



Dimensions: 19'11" x 14'7"  
Area: 291 sq. ft  
Counted as living area: Yes

Heated: Yes  
Finished: Yes  
Enclosed: Yes  
Contiguous: Yes  
Permitted: Yes  
Wet space: No  
Addition: No  
Conversion: No

### 11 Floor 1 - Garage



Dimensions: 21'8" x 30'10"  
Area: 669 sq. ft  
Counted as living area: No

Heated: No  
Finished: No  
Enclosed: Yes  
Contiguous: Yes  
Permitted: Yes  
Wet space: No  
Addition: No  
Conversion: No



**12** Floor 1 - Pantry



Dimensions: 7'10" x 3'9"  
Area: 29 sq. ft  
Counted as living area: Yes

Heated: Yes  
Finished: Yes  
Enclosed: Yes  
Contiguous: Yes  
Permitted: Yes  
Wet space: No  
Addition: No  
Conversion: No

**13** Floor 1 - Porch



Dimensions: 23'3" x 8'8"  
Area: 201 sq. ft  
Counted as living area: No

Heated: No  
Finished: No  
Enclosed: No  
Contiguous: Yes  
Permitted: Yes  
Wet space: No  
Addition: No  
Conversion: No

**14** Floor 1 - Sun Room



Dimensions: 19'5" x 14'3"  
Area: 276 sq. ft  
Counted as living area: Yes

Heated: Yes  
Finished: Yes  
Enclosed: Yes  
Contiguous: Yes  
Permitted: Yes  
Wet space: No  
Addition: No  
Conversion: No



**15** Floor 1 - Kitchen



Dimensions: 13'8" x 14'0"  
Area: 191 sq. ft  
Counted as living area: Yes

Heated: Yes  
Finished: Yes  
Enclosed: Yes  
Contiguous: Yes  
Permitted: Yes  
Wet space: No  
Addition: No  
Conversion: No

**16** Floor 1 - Patio



Dimensions: 21'0" x 6'3"  
Area: 131 sq. ft  
Counted as living area: No

Heated: No  
Finished: No  
Enclosed: No  
Contiguous: Yes  
Permitted: Yes  
Wet space: No  
Addition: No  
Conversion: No

**17** Floor 1 - Office



Dimensions: 11'6" x 15'1"  
Area: 174 sq. ft  
Counted as living area: Yes

Heated: Yes  
Finished: Yes  
Enclosed: Yes  
Contiguous: Yes  
Permitted: Yes  
Wet space: No  
Addition: No  
Conversion: No



**18** Floor 1 - W.I.C.



Dimensions: 9'7" x 14'2"  
Area: 135 sq. ft  
Counted as living area: Yes

Heated: Yes  
Finished: Yes  
Enclosed: Yes  
Contiguous: Yes  
Permitted: Yes  
Wet space: No  
Addition: No  
Conversion: No

**19** Floor 1 - Dining Room



Dimensions: 13'8" x 13'7"  
Area: 186 sq. ft  
Counted as living area: Yes

Heated: Yes  
Finished: Yes  
Enclosed: Yes  
Contiguous: Yes  
Permitted: Yes  
Wet space: No  
Addition: No  
Conversion: No

**20** Floor 1 - W.I.C.



Dimensions: 6'4" x 5'0"  
Area: 32 sq. ft  
Counted as living area: Yes

Heated: Yes  
Finished: Yes  
Enclosed: Yes  
Contiguous: Yes  
Permitted: Yes  
Wet space: No  
Addition: No  
Conversion: No



**21** Floor 1 - Hall



Dimensions: 5'6" x 3'9"  
Area: 20 sq. ft  
Counted as living area: Yes

Heated: Yes  
Finished: Yes  
Enclosed: Yes  
Contiguous: Yes  
Permitted: Yes  
Wet space: No  
Addition: No  
Conversion: No

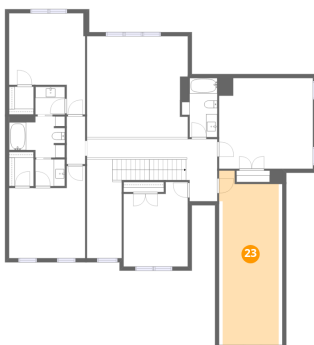
**22** Floor 2 - Bedroom



Dimensions: 13'8" x 16'6"  
Area: 225 sq. ft  
Counted as living area: Yes

Heated: Yes  
Finished: Yes  
Enclosed: Yes  
Contiguous: Yes  
Permitted: Yes  
Wet space: No  
Addition: No  
Conversion: No

**23** Floor 2 - Attic



Dimensions: 11'4" x 31'3"  
Area: 354 sq. ft  
Counted as living area: No

Heated: No  
Finished: No  
Enclosed: Yes  
Contiguous: Yes  
Permitted: Yes  
Wet space: No  
Addition: No  
Conversion: No



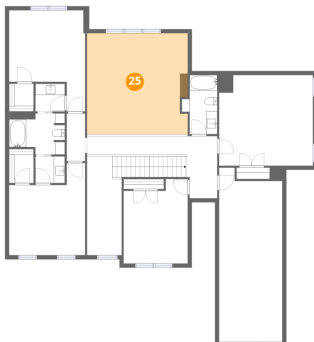
**24** Floor 2 - Bath



Dimensions: 5'3" x 5'0"  
Area: 26 sq. ft  
Counted as living area: Yes

Heated: Yes  
Finished: Yes  
Enclosed: Yes  
Contiguous: Yes  
Permitted: Yes  
Wet space: Yes  
Addition: No  
Conversion: No

**25** Floor 2 - Open To Below



Dimensions: 18'1" x 18'1"  
Area: 326 sq. ft  
Counted as living area: No

Heated: No  
Finished: No  
Enclosed: No  
Contiguous: Yes  
Permitted: No  
Wet space: No  
Addition: No  
Conversion: No

**26** Floor 2 - Bath



Dimensions: 5'3" x 4'9"  
Area: 25 sq. ft  
Counted as living area: Yes

Heated: Yes  
Finished: Yes  
Enclosed: Yes  
Contiguous: Yes  
Permitted: Yes  
Wet space: Yes  
Addition: No  
Conversion: No



**27** Floor 2 - Bath



Dimensions: 10'0" x 7'5"  
Area: 74 sq. ft  
Counted as living area: Yes

Heated: Yes  
Finished: Yes  
Enclosed: Yes  
Contiguous: Yes  
Permitted: Yes  
Wet space: Yes  
Addition: No  
Conversion: No

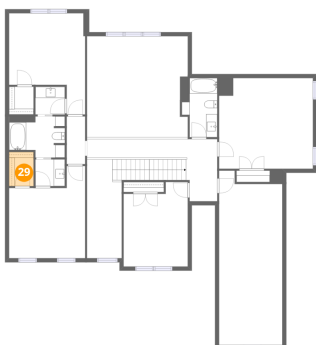
**28** Floor 2 - Bath



Dimensions: 4'11" x 10'7"  
Area: 52 sq. ft  
Counted as living area: Yes

Heated: Yes  
Finished: Yes  
Enclosed: Yes  
Contiguous: Yes  
Permitted: Yes  
Wet space: Yes  
Addition: No  
Conversion: No

**29** Floor 2 - W.I.C.

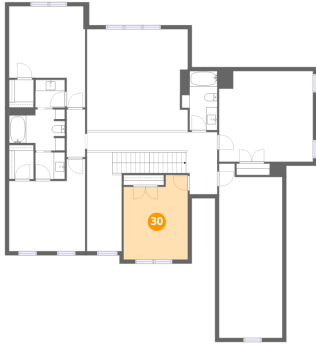


Dimensions: 4'5" x 6'2"  
Area: 27 sq. ft  
Counted as living area: Yes

Heated: Yes  
Finished: Yes  
Enclosed: Yes  
Contiguous: Yes  
Permitted: Yes  
Wet space: No  
Addition: No  
Conversion: No



**30** Floor 2 - Bedroom



Dimensions: 11'6" x 15'2"  
Area: 174 sq. ft  
Counted as living area: Yes

Heated: Yes  
Finished: Yes  
Enclosed: Yes  
Contiguous: Yes  
Permitted: Yes  
Wet space: No  
Addition: No  
Conversion: No

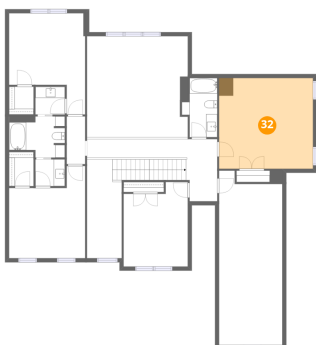
**31** Floor 2 - Hall



Dimensions: 23'4" x 11'1"  
Area: 259 sq. ft  
Counted as living area: Yes

Heated: Yes  
Finished: Yes  
Enclosed: Yes  
Contiguous: Yes  
Permitted: Yes  
Wet space: No  
Addition: No  
Conversion: No

**32** Floor 2 - Bedroom



Dimensions: 16'10" x 16'2"  
Area: 273 sq. ft  
Counted as living area: Yes

Heated: Yes  
Finished: Yes  
Enclosed: Yes  
Contiguous: Yes  
Permitted: Yes  
Wet space: No  
Addition: No  
Conversion: No



**33** Floor 2 - Hall



Dimensions: 3'4" x 8'7"  
Area: 28 sq. ft  
Counted as living area: Yes

Heated: Yes  
Finished: Yes  
Enclosed: Yes  
Contiguous: Yes  
Permitted: Yes  
Wet space: No  
Addition: No  
Conversion: No

**34** Floor 2 - W.I.C.



Dimensions: 4'5" x 5'0"  
Area: 22 sq. ft  
Counted as living area: Yes

Heated: Yes  
Finished: Yes  
Enclosed: Yes  
Contiguous: Yes  
Permitted: Yes  
Wet space: No  
Addition: No  
Conversion: No

**35** Floor 2 - Bedroom

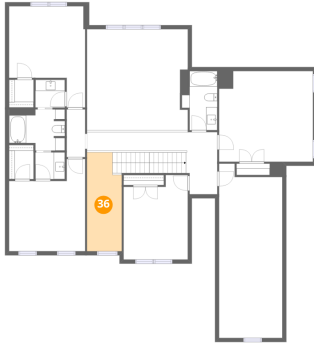


Dimensions: 13'8" x 18'2"  
Area: 247 sq. ft  
Counted as living area: Yes

Heated: Yes  
Finished: Yes  
Enclosed: Yes  
Contiguous: Yes  
Permitted: Yes  
Wet space: No  
Addition: No  
Conversion: No



**36** Floor 2 - Open To Below



Dimensions: 6'2" x 17'8"  
Area: 110 sq. ft  
Counted as living area: No

Heated: No  
Finished: No  
Enclosed: No  
Contiguous: Yes  
Permitted: No  
Wet space: No  
Addition: No  
Conversion: No