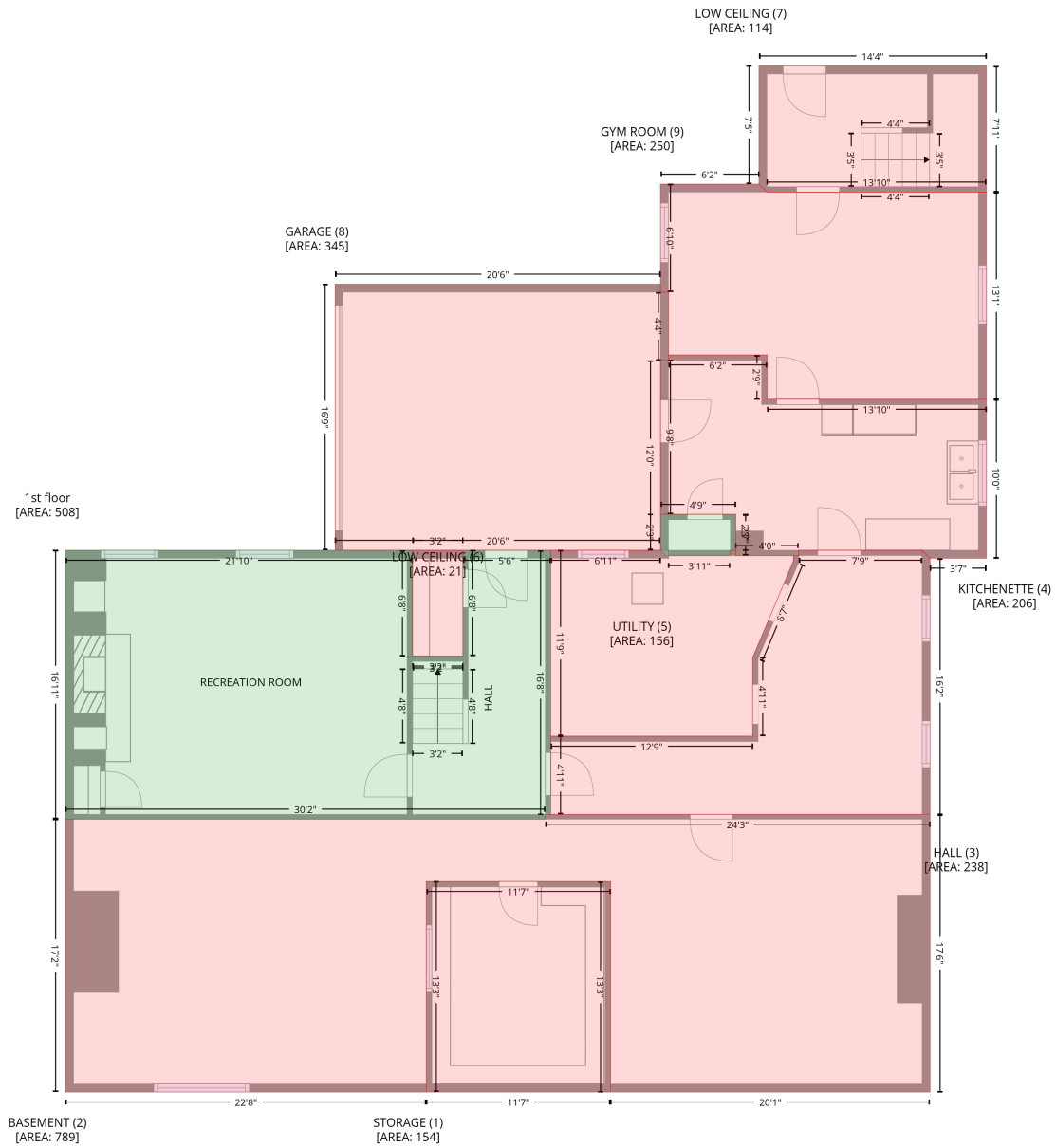


# 302 Cherry St, Mt Airy, NC, US

Gross Living Area: 5755 sq. ft

## Level 1



### Space

Area (sq. ft)

Calculation Coordinate Polygon Area Algorithm using inches

1st floor  
(Living area)

508

$$\begin{aligned}
 & -((374.4 + 374.4) * (403.8 - 483.8) + (374.4 + 412.5) * (483.8 - 483.8) + (412.5 + 412.5) * (483.8 - 403.8) \\
 & + (412.5 + 478.7) * (403.8 - 403.8) + (478.7 + 478.7) * (403.8 - 603.4) + (478.7 + 474.7) * (603.4 - 603.4) \\
 & + (474.7 + 474.7) * (603.4 - 607.1) + (474.7 + 112.5) * (607.1 - 607.1) + (112.5 + 112.5) * (607.1 - 403.8) \\
 & + (112.5 + 374.4) * (403.8 - 403.8)) * 0.5 * 0.00694 + -((618.5 + 618.5) * (376.6 - 403.8) + (618.5 + 614.5) * (403.8 - 403.8) \\
 & + (614.5 + 614.5) * (403.8 - 407.8) + (614.5 + 567.7) * (407.8 - 407.8) + (567.7 + 567.7) * (407.8 - 403.8) \\
 & + (567.7 + 561.7) * (403.8 - 403.8) + (561.7 + 561.7) * (403.8 - 376.6) + (561.7 + 618.5) * (376.6 - 376.6)) * 0.5 * 0.00694
 \end{aligned}$$

# 302 Cherry St,Mt Airy,NC,US

Gross Living Area: 5755 sq. ft

## Level 1

Space	Area (sq. ft)	Calculation <small>Coordinate Polygon Area Algorithm using inches</small>
STORAGE (Non-living area)	154	$-\left((524 + 524) * (654.2 - 813.4) + (524 + 384.9) * (813.4 - 813.4) + (384.9 + 384.9) * (813.4 - 654.2) + (384.9 + 524) * (654.2 - 654.2)\right) * 0.5 * 0.00694$
BASEMENT (Non-living area)	789	$-\left((765.3 + 765.3) * (603.4 - 813.4) + (765.3 + 524) * (813.4 - 813.4) + (524 + 524) * (813.4 - 654.2) + (524 + 384.9) * (654.2 - 654.2) + (384.9 + 384.9) * (654.2 - 813.4) + (384.9 + 112.5) * (813.4 - 813.4) + (112.5 + 112.5) * (813.4 - 607.1) + (112.5 + 474.7) * (607.1 - 607.1) + (474.7 + 474.7) * (607.1 - 603.4) + (474.7 + 765.3) * (603.4 - 603.4)\right) * 0.5 * 0.00694$
HALL (Non-living area)	238	$-\left((758.9 + 759.3) * (403.8 - 407.8) + (759.3 + 759.3) * (407.8 - 403.8) + (759.3 + 765.3) * (403.8 - 409.8) + (765.3 + 765.3) * (409.8 - 603.4) + (765.3 + 478.7) * (603.4 - 603.4) + (478.7 + 478.7) * (603.4 - 544.4) + (478.7 + 631.4) * (544.4 - 544.4) + (631.4 + 631.4) * (544.4 - 484.9) + (631.4 + 662.1) * (484.9 - 411.9) + (662.1 + 662.1) * (411.9 - 407.8) + (662.1 + 666.1) * (407.8 - 407.8) + (666.1 + 666.1) * (407.8 - 403.8) + (666.1 + 758.9) * (403.8 - 403.8)\right) * 0.5 * 0.00694$
KITCHENETTE (Non-living area)	206	$-\left((642.1 + 642.1) * (256.2 - 289.6) + (642.1 + 807.8) * (289.6 - 289.6) + (807.8 + 807.8) * (289.6 - 409.8) + (807.8 + 765.3) * (409.8 - 409.8) + (765.3 + 759.3) * (409.8 - 403.8) + (759.3 + 666.1) * (403.8 - 403.8) + (666.1 + 666.1) * (403.8 - 407.8) + (666.1 + 618.5) * (407.8 - 407.8) + (618.5 + 618.5) * (407.8 - 376.6) + (618.5 + 561.7) * (376.6 - 376.6) + (561.7 + 561.7) * (376.6 - 260.2) + (561.7 + 567.7) * (260.2 - 260.2) + (567.7 + 567.7) * (260.2 - 256.2) + (567.7 + 642.1) * (256.2 - 256.2)\right) * 0.5 * 0.00694$
UTILITY (Non-living area)	156	$-\left((561.7 + 567.7) * (403.8 - 409.8) + (567.7 + 567.7) * (409.8 - 407.8) + (567.7 + 614.5) * (407.8 - 407.8) + (614.5 + 614.5) * (407.8 - 403.8) + (614.5 + 618.5) * (403.8 - 403.8) + (618.5 + 618.5) * (403.8 - 407.8) + (618.5 + 662.1) * (407.8 - 407.8) + (662.1 + 662.1) * (407.8 - 411.9) + (662.1 + 631.4) * (411.9 - 484.9) + (631.4 + 631.4) * (484.9 - 544.4) + (631.4 + 478.7) * (544.4 - 544.4) + (478.7 + 478.7) * (544.4 - 403.8) + (478.7 + 561.7) * (403.8 - 403.8)\right) * 0.5 * 0.00694$
LOW CEILING (Non-living area)	21	$-\left((412.5 + 412.5) * (403.8 - 483.8) + (412.5 + 374.4) * (483.8 - 483.8) + (374.4 + 374.4) * (483.8 - 403.8) + (374.4 + 412.5) * (403.8 - 403.8)\right) * 0.5 * 0.00694$
LOW CEILING (Non-living area)	114	$-\left((807.8 + 807.8) * (37.7 - 133) + (807.8 + 642.1) * (133 - 133) + (642.1 + 636.1) * (133 - 127) + (636.1 + 636.1) * (127 - 37.7) + (636.1 + 807.8) * (37.7 - 37.7)\right) * 0.5 * 0.00694$
GARAGE (Non-living area)	345	$-\left((561.7 + 561.7) * (202.6 - 208.6) + (561.7 + 567.7) * (208.6 - 208.6) + (567.7 + 567.7) * (208.6 - 260.2) + (567.7 + 561.7) * (260.2 - 260.2) + (561.7 + 561.7) * (260.2 - 403.8) + (561.7 + 316) * (403.8 - 403.8) + (316 + 316) * (403.8 - 202.6) + (316 + 561.7) * (202.6 - 202.6)\right) * 0.5 * 0.00694$
GYM ROOM (Non-living area)	250	$-\left((636.1 + 642.1) * (127 - 133) + (642.1 + 807.8) * (133 - 133) + (807.8 + 807.8) * (133 - 289.6) + (807.8 + 642.1) * (289.6 - 289.6) + (642.1 + 642.1) * (289.6 - 256.2) + (642.1 + 567.7) * (256.2 - 256.2) + (567.7 + 567.7) * (256.2 - 208.6) + (567.7 + 561.7) * (208.6 - 208.6) + (561.7 + 561.7) * (208.6 - 127) + (561.7 + 636.1) * (127 - 127)\right) * 0.5 * 0.00694$



# 302 Cherry St,Mt Airy,NC,US

Gross Living Area: 5755 sq. ft

## Level 2

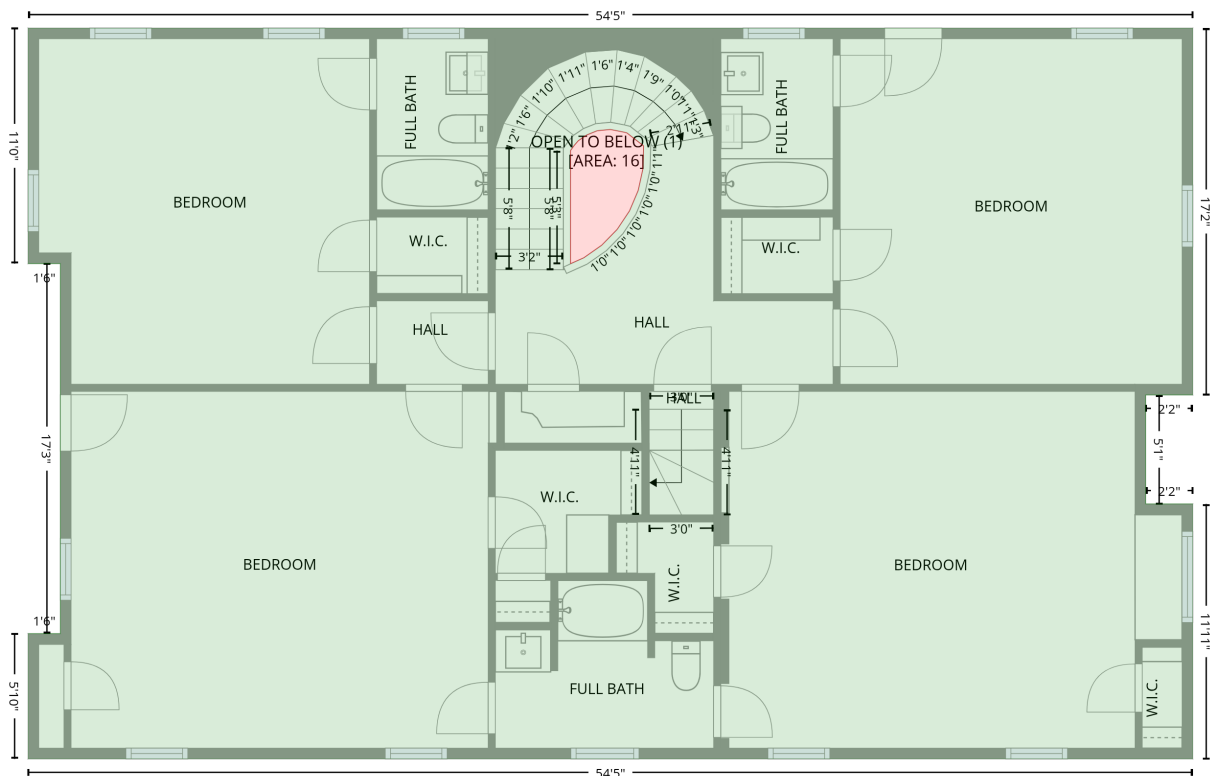
Space	Area (sq. ft)	Calculation <small>Coordinate Polygon Area Algorithm using inches</small>
PATIO (Non-living area)	243	$-\left((439.3 + 439.3) * (132.7 - 204.6) + (439.3 + 440.8) * (204.6 - 404.3) + (440.8 + 305.5) * (404.3 - 404.3) + (305.5 + 305.5) * (404.3 - 174.2) + (305.5 + 400.1) * (174.2 - 174.2) + (400.1 + 400.1) * (174.2 - 170.2) + (400.1 + 334.4) * (170.2 - 170.2) + (334.4 + 334.4) * (170.2 - 132.7) + (334.4 + 439.3) * (132.7 - 132.7)\right) * 0.5 * 0.00694$
FIREPLACE (Non-living area)	10	$-\left((130.6 + 130.6) * (671.1 - 749.2) + (130.6 + 112.5) * (749.2 - 749.2) + (112.5 + 112.5) * (749.2 - 671.1) + (112.5 + 130.6) * (671.1 - 671.1)\right) * 0.5 * 0.00694$
FIREPLACE (Non-living area)	16	$-\left((765.3 + 765.3) * (671.1 - 749.2) + (765.3 + 735.4) * (749.2 - 749.2) + (735.4 + 735.4) * (749.2 - 671.1) + (735.4 + 765.3) * (671.1 - 671.1)\right) * 0.5 * 0.00694$

# 302 Cherry St,Mt Airy,NC,US

Gross Living Area: 5755 sq. ft

## Level 3

3rd floor  
[AREA: 1804]

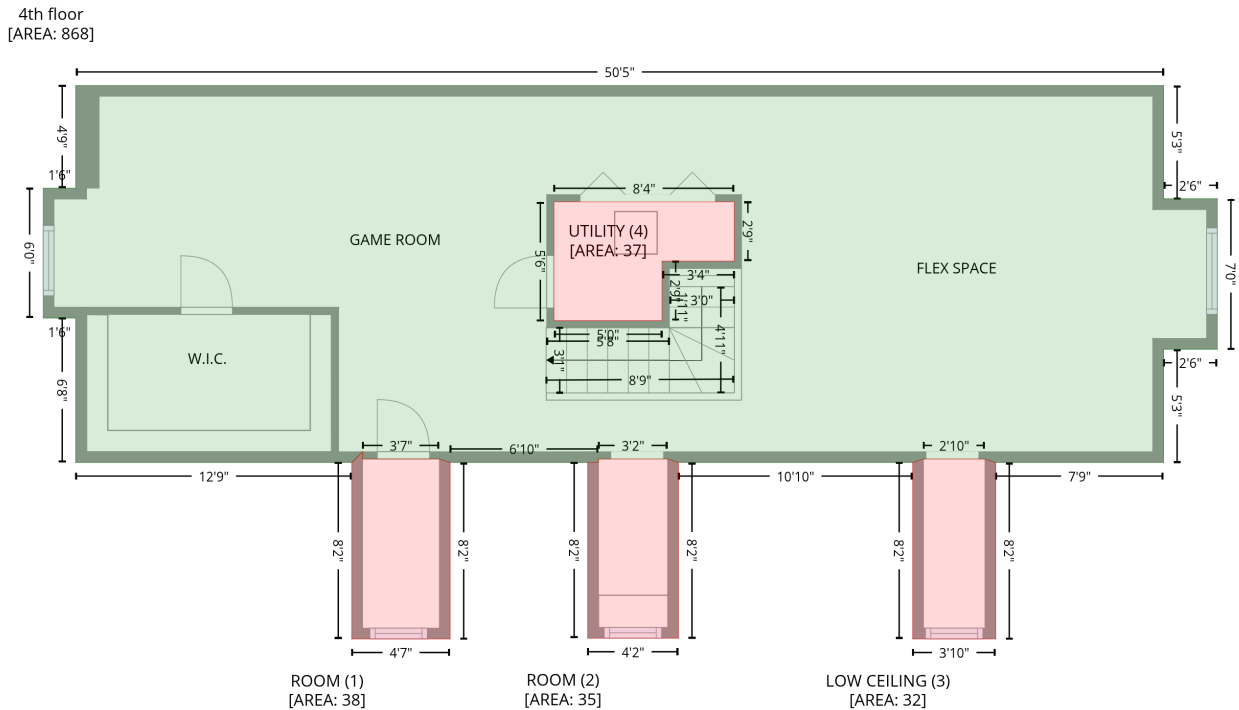


Space	Area (sq. ft)	Calculation
3rd floor (Living area)	1804	Coordinate Polygon Area Algorithm using inches $-((765.3 + 765.3) * (403.8 - 609.4) + (765.3 + 738.9) * (609.4 - 609.4) + (738.9 + 738.9) * (609.4 - 670.5) + (738.9 + 765.3) * (670.5 - 670.5) + (765.3 + 765.3) * (670.5 - 813.4) + (765.3 + 112.5) * (813.4 - 813.4) + (112.5 + 112.5) * (813.4 - 743.2) + (112.5 + 130.6) * (743.2 - 743.2) + (130.6 + 130.6) * (743.2 - 535.8) + (130.6 + 112.5) * (535.8 - 535.8) + (112.5 + 112.5) * (535.8 - 403.8) + (112.5 + 765.3) * (403.8 - 403.8) * 0.5 * 0.00694 + -((416.5 + 423.9) * (535.8 - 532.6) + (423.9 + 434.1) * (532.6 - 525.4) + (434.1 + 442.7) * (525.4 - 516.6) + (442.7 + 449.6) * (516.6 - 506.2) + (449.6 + 454.5) * (506.2 - 494.8) + (454.5 + 457.1) * (494.8 - 482.7) + (457.1 + 457.5) * (482.7 - 469.8) + (457.5 + 451.5) * (469.8 - 465.2) + (451.5 + 448.1) * (465.2 - 462.6) + (448.1 + 445.9) * (462.6 - 462) + (445.9 + 438.8) * (462 - 460.6) + (438.8 + 431.6) * (460.6 - 461.3) + (431.6 + 425.6) * (461.3 - 463.7) + (425.6 + 421) * (463.7 - 466.9) + (421 + 418.7) * (466.9 - 469.5) + (418.7 + 416.5) * (469.5 - 472.5) + (416.5 + 416.5) * (472.5 - 535.8)) * 0.5 * 0.00694$
OPEN TO BELOW (Non-living area)	16	$-((438.8 + 445.9) * (460.6 - 462) + (445.9 + 448.1) * (462 - 462.6) + (448.1 + 451.5) * (462.6 - 465.2) + (451.5 + 457.5) * (465.2 - 469.8) + (457.5 + 457.1) * (469.8 - 482.7) + (457.1 + 454.5) * (482.7 - 494.8) + (454.5 + 449.6) * (494.8 - 506.2) + (449.6 + 442.7) * (506.2 - 516.6) + (442.7 + 434.1) * (516.6 - 525.4) + (434.1 + 423.9) * (525.4 - 532.6) + (423.9 + 416.5) * (532.6 - 535.8) + (416.5 + 416.5) * (535.8 - 472.5) + (416.5 + 418.7) * (472.5 - 469.5) + (418.7 + 421) * (469.5 - 466.9) + (421 + 425.6) * (466.9 - 463.7) + (425.6 + 431.6) * (463.7 - 461.3) + (431.6 + 438.8) * (461.3 - 460.6)) * 0.5 * 0.00694$

# 302 Cherry St, Mt Airy, NC, US

Gross Living Area: 5755 sq. ft

## Level 4



Space	Area (sq. ft)	Calculation
4th floor (Living area)	868	$-\left((735.4 + 735.4) * (505.8 - 568.8) + (735.4 + 765.3) * (568.8 - 568.8) + (765.3 + 765.3) * (568.8 - 652.3) + (765.3 + 735.4) * (652.3 - 652.3) + (735.4 + 735.4) * (652.3 - 715.3) + (735.4 + 642.1) * (715.3 - 715.3) + (642.1 + 636.1) * (715.3 - 713.3) + (636.1 + 601.9) * (713.3 - 713.3) + (601.9 + 595.9) * (713.3 - 715.3) + (595.9 + 465.7) * (715.3 - 715.3) + (465.7 + 459.7) * (715.3 - 713.3) + (459.7 + 421.2) * (713.3 - 713.3) + (421.2 + 421.2) * (713.3 - 715.3) + (421.2 + 338.7) * (715.3 - 715.3) + (338.7 + 332.7) * (715.3 - 713.3) + (332.7 + 290.1) * (713.3 - 713.3) + (290.1 + 290.1) * (713.3 - 709.3) + (290.1 + 284.1) * (709.3 - 715.3) + (284.1 + 130.6) * (715.3 - 715.3) + (130.6 + 130.6) * (715.3 - 635) + (130.6 + 112.5) * (635 - 635) + (112.5 + 112.5) * (635 - 562.9) + (112.5 + 130.6) * (562.9 - 562.9) + (130.6 + 130.6) * (562.9 - 505.8) + (130.6 + 735.4) * (505.8 - 505.8)\right) * 0.5 * 0.00694 + -((496.8 + 396.4) * (570.4 - 570.4) + (396.4 + 396.4) * (570.4 - 636.5) + (396.4 + 456.6) * (636.5 - 636.5) + (456.6 + 456.6) * (636.5 - 603.4) + (456.6 + 496.8) * (603.4 - 603.4) + (496.8 + 496.8) * (603.4 - 570.4)) * 0.5 * 0.00694$
ROOM (Non-living area)	38	$-\left((290.1 + 290.1) * (709.3 - 713.3) + (290.1 + 332.7) * (713.3 - 713.3) + (332.7 + 338.7) * (713.3 - 715.3) + (338.7 + 338.7) * (715.3 - 813.4) + (338.7 + 284.1) * (813.4 - 813.4) + (284.1 + 284.1) * (813.4 - 715.3) + (284.1 + 290.1) * (715.3 - 709.3)\right) * 0.5 * 0.00694$
ROOM (Non-living area)	35	$-\left((459.7 + 465.7) * (713.3 - 715.3) + (465.7 + 465.7) * (715.3 - 812.9) + (465.7 + 415.2) * (812.9 - 812.9) + (415.2 + 415.2) * (812.9 - 715.3) + (415.2 + 421.2) * (715.3 - 715.3) + (421.2 + 421.2) * (715.3 - 713.3) + (421.2 + 459.7) * (713.3 - 713.3)\right) * 0.5 * 0.00694$
LOW CEILING (Non-living area)	32	$-\left((636.1 + 642.1) * (713.3 - 715.3) + (642.1 + 642.1) * (715.3 - 813.4) + (642.1 + 595.9) * (813.4 - 813.4) + (595.9 + 595.9) * (813.4 - 715.3) + (595.9 + 601.9) * (715.3 - 713.3) + (601.9 + 636.1) * (713.3 - 713.3)\right) * 0.5 * 0.00694$
UTILITY (Non-living area)	37	$-\left((496.8 + 496.8) * (570.4 - 603.4) + (496.8 + 456.6) * (603.4 - 603.4) + (456.6 + 456.6) * (603.4 - 636.5) + (456.6 + 396.4) * (636.5 - 636.5) + (396.4 + 396.4) * (636.5 - 570.4) + (396.4 + 496.8) * (570.4 - 570.4)\right) * 0.5 * 0.00694$