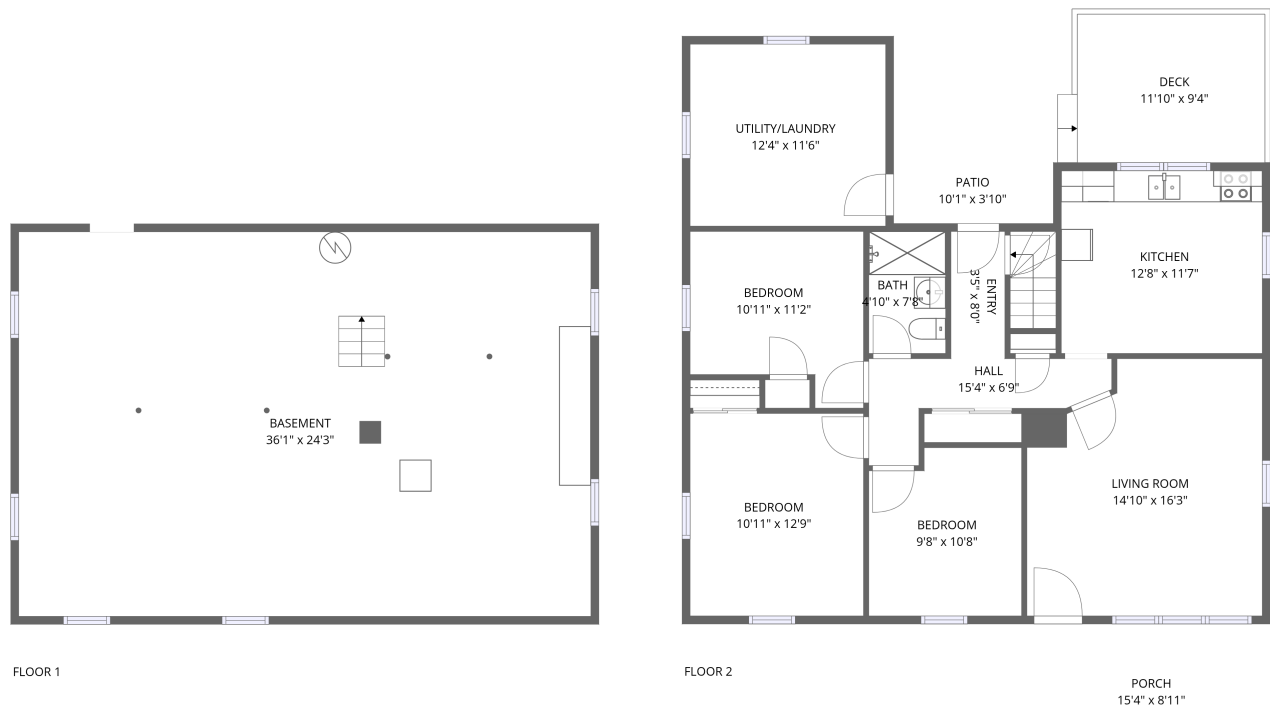


Home report

1933 Stones Dairy Road, Bassett, Henry County, Virginia, United States, 24055



Total Area: 930 sq. ft

Below Ground: 0 sq. ft, Floor 2: 930 sq. ft

Excluded: Basement 877 sq. ft, Utility/laundry 142 sq. ft, Porch 137 sq. ft, Patio 39 sq. ft, Deck 111 sq. ft, Walls: 139 sq. ft

Property summary

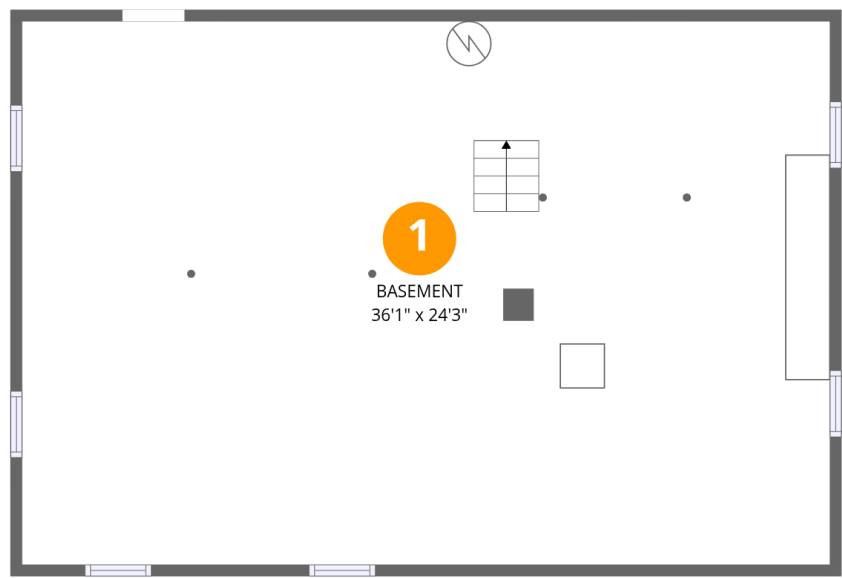
 **2** Floors

 **3** Bedrooms

 **1** Bathrooms

Home report

1933 Stones Dairy Road, Bassett, Henry County, Virginia, United States, 24055



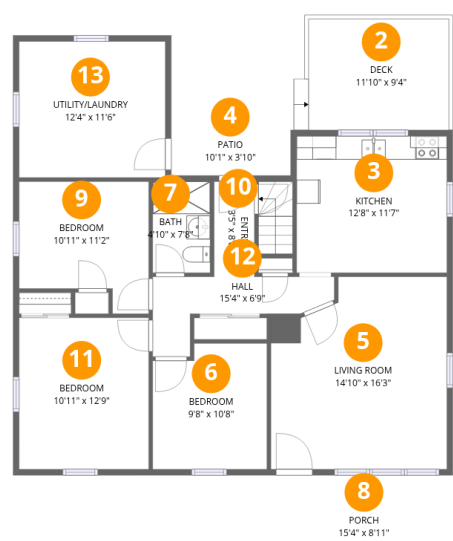
Room dimensions

Floor 1 Below ground Total:0sqft Excluded: 877sqft

#		Max Dimensions	sqft	Included
1	Basement	36'1" x 24'3"	877 sq. ft	No

Home report

1933 Stones Dairy Road, Bassett, Henry County, Virginia, United States, 24055



Room dimensions

Floor 2

Total:930sqft Excluded: 429sqft

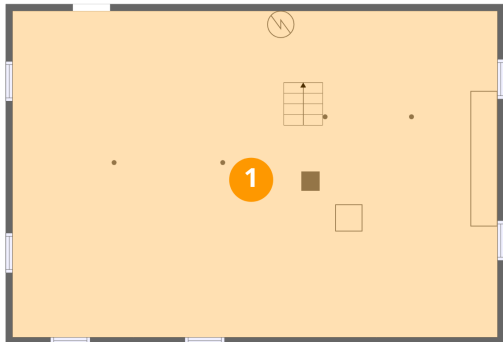
#		Max Dimensions	sqft	Included
2	Deck	11'10" x 9'4"	111 sq. ft	No
3	Kitchen	12'8" x 11'7"	147 sq. ft	Yes
4	Patio	10'1" x 3'10"	39 sq. ft	No
5	Living Room	14'10" x 16'3"	224 sq. ft	Yes
6	Bedroom	9'8" x 10'8"	97 sq. ft	Yes
7	Bath	4'10" x 7'8"	37 sq. ft	Yes
8	Porch	15'4" x 8'11"	137 sq. ft	No
9	Bedroom	10'11" x 11'2"	105 sq. ft	Yes
10	Entry	3'5" x 8'0"	27 sq. ft	Yes
11	Bedroom	10'11" x 12'9"	140 sq. ft	Yes
12	Hall	15'4" x 6'9"	58 sq. ft	Yes

Home report

1933 Stones Dairy Road, Bassett, Henry County, Virginia, United States, 24055

#		Max Dimensions	sqft	Included
13	UTILITY/LAUNDRY	12'4" x 11'6"	142 sq. ft	No

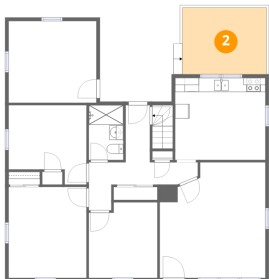
1 Floor 1 - Basement



Max Dimensions: 36'1" x 24'3"
Calculated Area: 877 sq. ft
Included: No

Heated: Yes
Finished: No
Enclosed: Yes
Contiguous: Yes
Permitted: Yes
Wet space: No
Addition: No
Conversion: No

2 Floor 2 - Deck



Max Dimensions: 11'10" x 9'4"
Calculated Area: 111 sq. ft
Included: No

Heated: No
Finished: No
Enclosed: No
Contiguous: Yes
Permitted: Yes
Wet space: No
Addition: No
Conversion: No

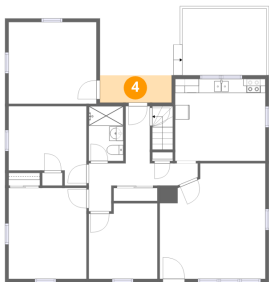
3 Floor 2 - Kitchen



Max Dimensions: 12'8" x 11'7"
Calculated Area: 147 sq. ft
Included: Yes

Heated: Yes
Finished: Yes
Enclosed: Yes
Contiguous: Yes
Permitted: Yes
Wet space: No
Addition: No
Conversion: No

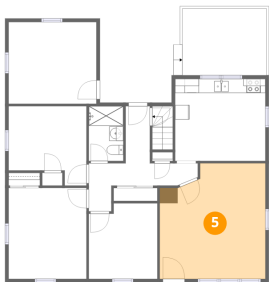
4 Floor 2 - Patio



Max Dimensions: 10'1" x 3'10"
Calculated Area: 39 sq. ft
Included: No

Heated: No
Finished: No
Enclosed: No
Contiguous: Yes
Permitted: Yes
Wet space: No
Addition: No
Conversion: No

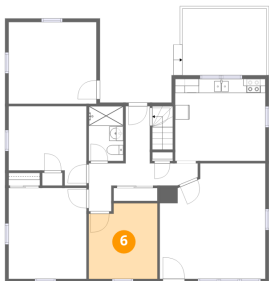
5 Floor 2 - Living Room



Max Dimensions: 14'10" x 16'3"
Calculated Area: 224 sq. ft
Included: Yes

Heated: Yes
Finished: Yes
Enclosed: Yes
Contiguous: Yes
Permitted: Yes
Wet space: No
Addition: No
Conversion: No

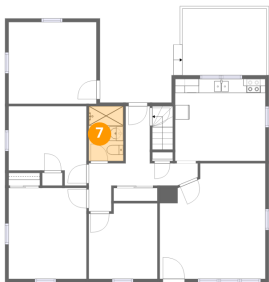
6 Floor 2 - Bedroom



Max Dimensions: 9'8" x 10'8"
Calculated Area: 97 sq. ft
Included: Yes

Heated: Yes
Finished: Yes
Enclosed: Yes
Contiguous: Yes
Permitted: Yes
Wet space: No
Addition: No
Conversion: No

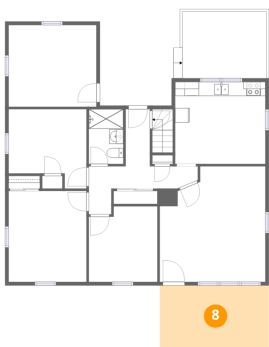
7 Floor 2 - Bath



Max Dimensions: 4'10" x 7'8"
Calculated Area: 37 sq. ft
Included: Yes

Heated: Yes
Finished: Yes
Enclosed: Yes
Contiguous: Yes
Permitted: Yes
Wet space: Yes
Addition: No
Conversion: No

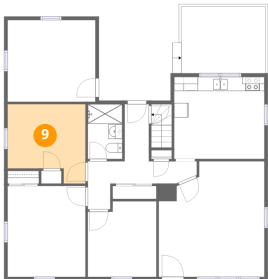
8 Floor 2 - Porch



Max Dimensions: 15'4" x 8'11"
Calculated Area: 137 sq. ft
Included: No

Heated: No
Finished: No
Enclosed: No
Contiguous: Yes
Permitted: Yes
Wet space: No
Addition: No
Conversion: No

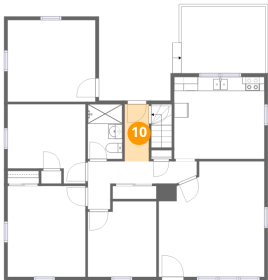
9 Floor 2 - Bedroom



Max Dimensions: 10'11" x 11'2"
Calculated Area: 105 sq. ft
Included: Yes

Heated: Yes
Finished: Yes
Enclosed: Yes
Contiguous: Yes
Permitted: Yes
Wet space: No
Addition: No
Conversion: No

10 Floor 2 - Entry



Max Dimensions: 3'5" x 8'0"
Calculated Area: 27 sq. ft
Included: Yes

Heated: Yes
Finished: Yes
Enclosed: Yes
Contiguous: Yes
Permitted: Yes
Wet space: No
Addition: No
Conversion: No

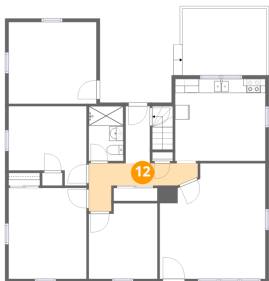
11 Floor 2 - Bedroom



Max Dimensions: 10'11" x 12'9"
Calculated Area: 140 sq. ft
Included: Yes

Heated: Yes
Finished: Yes
Enclosed: Yes
Contiguous: Yes
Permitted: Yes
Wet space: No
Addition: No
Conversion: No

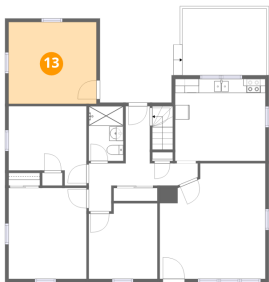
12 Floor 2 - Hall



Max Dimensions: 15'4" x 6'9"
Calculated Area: 58 sq. ft
Included: Yes

Heated: Yes
Finished: Yes
Enclosed: Yes
Contiguous: Yes
Permitted: Yes
Wet space: No
Addition: No
Conversion: No

13 Floor 2 - UTILITY/LAUNDRY



Max Dimensions: 12'4" x 11'6"
Calculated Area: 142 sq. ft
Included: No

Heated: Yes
Finished: No
Enclosed: Yes
Contiguous: Yes
Permitted: Yes
Wet space: No
Addition: No
Conversion: No