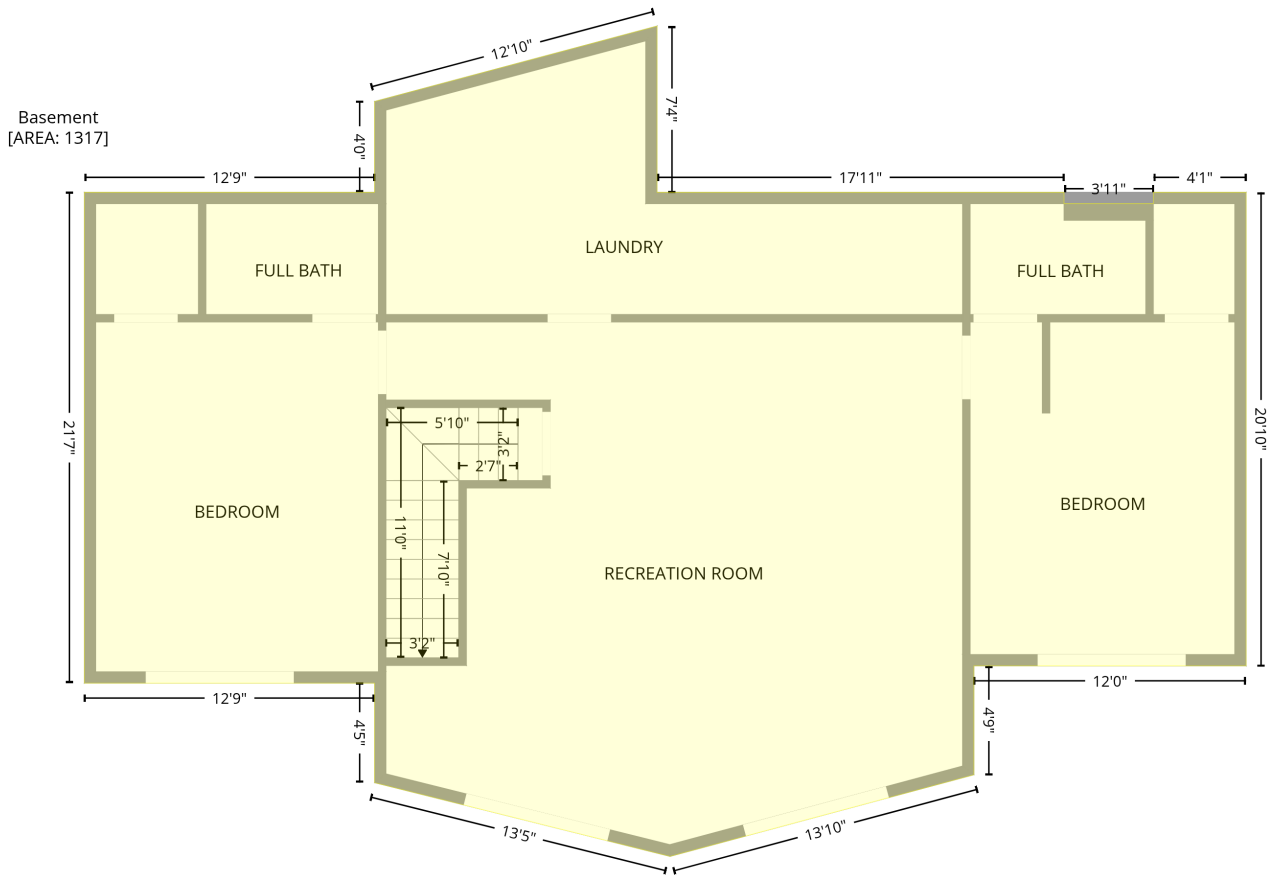


129 Cherry Ct, Littleton, NC, US

Gross Living Area: 1444 sq. ft

Level 1 - Below Grade

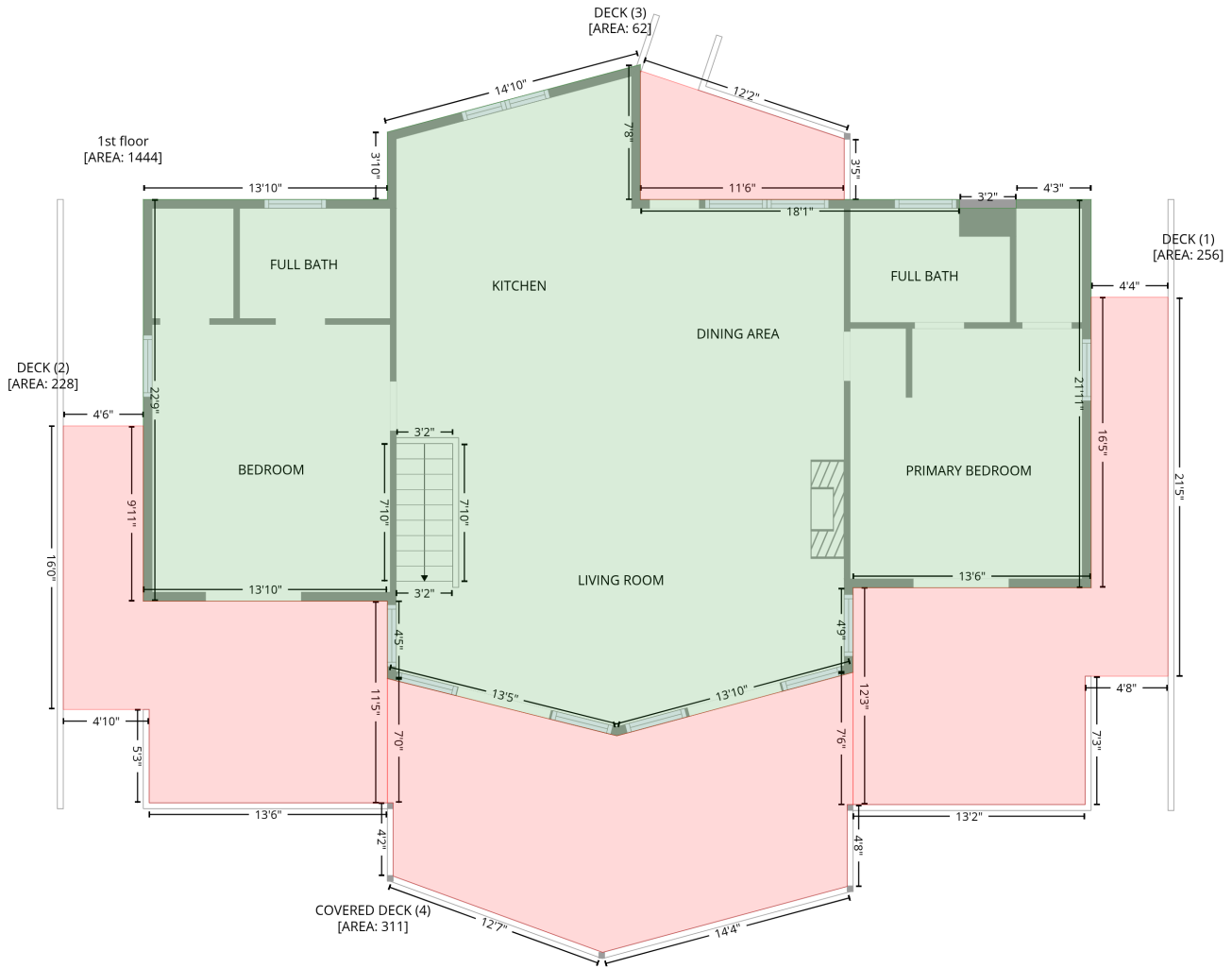


Space	Area (sq. ft)	Calculation <small>Coordinate Polygon Area Algorithm using inches</small>
Basement (Living area)	1317	$-((382.5 + 382.5) * (93.2 - 180.9) + (382.5 + 597.2) * (180.9 - 180.9) + (597.2 + 597.2) * (180.9 - 186.9) + (597.2 + 644.3) * (186.9 - 186.9) + (644.3 + 644.3) * (186.9 - 180.9) + (644.3 + 693.3) * (180.9 - 180.9) + (693.3 + 693.3) * (180.9 - 430.7) + (693.3 + 549.7) * (430.7 - 430.7) + (549.7 + 549.7) * (430.7 - 488.1) + (549.7 + 389.3) * (488.1 - 531.2) + (389.3 + 233.5) * (531.2 - 492.3) + (233.5 + 233.5) * (492.3 - 439.8) + (233.5 + 80.3) * (439.8 - 439.8) + (80.3 + 80.3) * (439.8 - 180.9) + (80.3 + 233.5) * (180.9 - 180.9) + (233.5 + 233.5) * (180.9 - 132.9) + (233.5 + 382.5) * (132.9 - 93.2)) * 0.5 * 0.00694$

129 Cherry Ct, Littleton, NC, US

Gross Living Area: 1444 sq. ft

Level 2



Space	Area (sq. ft)	Calculation
1st floor (Living area)	1444	$-\left((405.3 + 405.3) * (75.7 - 167.2) + (405.3 + 621.9) * (167.2 - 167.2) + (621.9 + 621.9) * (167.2 - 173.2) + (621.9 + 660.4) * (173.2 - 173.2) + (660.4 + 660.4) * (173.2 - 167.2) + (660.4 + 711.3) * (167.2 - 167.2) + (711.3 + 711.3) * (167.2 - 430.7) + (711.3 + 549.7) * (430.7 - 430.7) + (549.7 + 549.7) * (430.7 - 488.1) + (549.7 + 389.3) * (488.1 - 531.2) + (389.3 + 233.5) * (531.2 - 492.3) + (233.5 + 233.5) * (492.3 - 439.8) + (233.5 + 67.7) * (439.8 - 439.8) + (67.7 + 67.7) * (439.8 - 167.2) + (67.7 + 233.5) * (167.2 - 167.2) + (233.5 + 233.5) * (167.2 - 121.5) + (233.5 + 405.3) * (121.5 - 75.7)\right) * 0.5 * 0.00694$
DECK (Non-living area)	256	$-\left((763.5 + 763.5) * (233.6 - 490.8) + (763.5 + 707.3) * (490.8 - 490.8) + (707.3 + 707.3) * (490.8 - 577.9) + (707.3 + 549.7) * (577.9 - 577.9) + (549.7 + 549.7) * (577.9 - 430.7) + (549.7 + 711.3) * (430.7 - 430.7) + (711.3 + 711.3) * (430.7 - 233.6) + (711.3 + 763.5) * (233.6 - 233.6)\right) * 0.5 * 0.00694$
DECK (Non-living area)	228	$-\left((67.7 + 67.7) * (320.9 - 439.8) + (67.7 + 233.5) * (439.8 - 439.8) + (233.5 + 233.5) * (439.8 - 576.7) + (233.5 + 71.7) * (576.7 - 576.7) + (71.7 + 71.7) * (576.7 - 513.3) + (71.7 + 13.4) * (513.3 - 513.3) + (13.4 + 13.4) * (513.3 - 320.9) + (13.4 + 67.7) * (320.9 - 320.9)\right) * 0.5 * 0.00694$

129 Cherry Ct, Littleton, NC, US

Gross Living Area: 1444 sq. ft

Level 2

Space	Area (sq. ft)	Calculation <small>Coordinate Polygon Area Algorithm using inches</small>
DECK (Non-living area)	62	$-\left((405.3 + 543.7) * (79.9 - 126) + (543.7 + 543.7) * (126 - 167.2) + (543.7 + 405.3) * (167.2 - 167.2) + (405.3 + 405.3) * (167.2 - 79.9)\right) * 0.5 * 0.00694$
COVERED DECK (Non-living area)	311	$-\left((549.7 + 549.7) * (488.1 - 577.9) + (549.7 + 545.7) * (577.9 - 577.9) + (545.7 + 545.7) * (577.9 - 633.4) + (545.7 + 379.6) * (633.4 - 678.2) + (379.6 + 237.5) * (678.2 - 626.4) + (237.5 + 237.5) * (626.4 - 576.7) + (237.5 + 233.5) * (576.7 - 576.7) + (233.5 + 233.4) * (576.7 - 492.3) + (233.4 + 389.3) * (492.3 - 531.2) + (389.3 + 549.7) * (531.2 - 488.1)\right) * 0.5 * 0.00694$