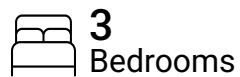


**Total Area: 1556 sq. ft**

1st Floor: 1556 sq. ft

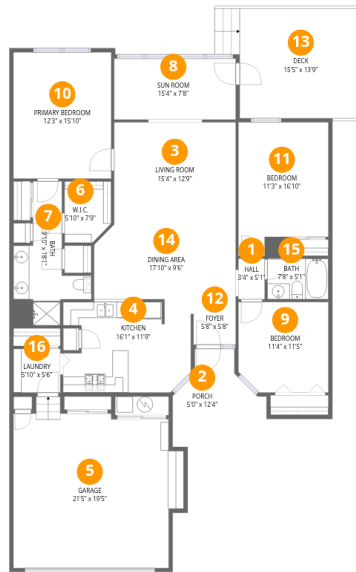
Excluded: Garage 411 sq. ft, Undefined 16 sq. ft, Deck 230 sq. ft, Porch 83 sq. ft, Walls: 131 sq. ft

## Property summary



# Home data report

## 2426 Simpson Ln, Shelbyville, IN, US



### Room dimensions

Floor 1

Total: 1556sqft

Excluded: 740sqft

#		Dimensions	sqft	Counted as living area
1	Hall	3'4" x 5'1"	17 sq. ft	Yes
2	Porch	5'0" x 12'4"	62 sq. ft	No
3	Living Room	15'4" x 12'9"	195 sq. ft	Yes
4	Kitchen	16'1" x 11'9"	188 sq. ft	Yes
5	Garage	21'5" x 19'5"	415 sq. ft	No
6	W.I.C.	5'10" x 7'9"	45 sq. ft	Yes
7	Bath	9'10" x 18'1"	177 sq. ft	Yes
8	Sun Room	15'4" x 7'8"	117 sq. ft	Yes
9	Bedroom	11'4" x 11'5"	129 sq. ft	Yes
10	Primary Bedroom	12'3" x 15'10"	195 sq. ft	Yes
11	Bedroom	11'3" x 16'10"	189 sq. ft	Yes

Home data report

**2426 Simpson Ln,Shelbyville,IN,US**

#		Dimensions	sqft	Counted as living area
12	Foyer	5'8" x 5'8"	32 sq. ft	Yes
13	Deck	15'5" x 13'9"	212 sq. ft	No
14	Dining Area	17'10" x 9'6"	169 sq. ft	Yes
15	Bath	7'8" x 5'1"	39 sq. ft	Yes
16	Laundry	5'10" x 5'6"	32 sq. ft	Yes

## 1 Floor 1 - Hall



Dimensions: 3'4" x 5'1"  
Area: 17 sq. ft  
Counted as living area: Yes

Heated: Yes  
Finished: Yes  
Enclosed: Yes  
Contiguous: Yes  
Permitted: Yes  
Wet space: No  
Addition: No  
Conversion: No

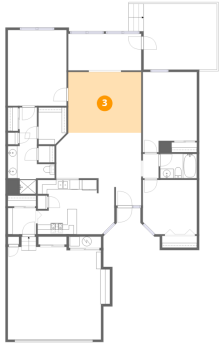
## 2 Floor 1 - Porch



Dimensions: 5'0" x 12'4"  
Area: 62 sq. ft  
Counted as living area: No

Heated: No  
Finished: No  
Enclosed: No  
Contiguous: Yes  
Permitted: Yes  
Wet space: No  
Addition: No  
Conversion: No

### 3 Floor 1 - Living Room



Dimensions: 15'4" x 12'9"  
Area: 195 sq. ft  
Counted as living area: Yes

Heated: Yes  
Finished: Yes  
Enclosed: Yes  
Contiguous: Yes  
Permitted: Yes  
Wet space: No  
Addition: No  
Conversion: No

### 4 Floor 1 - Kitchen



Dimensions: 16'1" x 11'9"  
Area: 188 sq. ft  
Counted as living area: Yes

Heated: Yes  
Finished: Yes  
Enclosed: Yes  
Contiguous: Yes  
Permitted: Yes  
Wet space: No  
Addition: No  
Conversion: No

### 5 Floor 1 - Garage



Dimensions: 21'5" x 19'5"  
Area: 415 sq. ft  
Counted as living area: No

Heated: No  
Finished: No  
Enclosed: Yes  
Contiguous: Yes  
Permitted: Yes  
Wet space: No  
Addition: No  
Conversion: No

**6** Floor 1 - W.I.C.



Dimensions: 5'10" x 7'9"  
Area: 45 sq. ft  
Counted as living area: Yes

Heated: Yes  
Finished: Yes  
Enclosed: Yes  
Contiguous: Yes  
Permitted: Yes  
Wet space: No  
Addition: No  
Conversion: No

**7** Floor 1 - Bath



Dimensions: 9'10" x 18'1"  
Area: 177 sq. ft  
Counted as living area: Yes

Heated: Yes  
Finished: Yes  
Enclosed: Yes  
Contiguous: Yes  
Permitted: Yes  
Wet space: Yes  
Addition: No  
Conversion: No

**8** Floor 1 - Sun Room



Dimensions: 15'4" x 7'8"  
Area: 117 sq. ft  
Counted as living area: Yes

Heated: Yes  
Finished: Yes  
Enclosed: Yes  
Contiguous: Yes  
Permitted: Yes  
Wet space: No  
Addition: No  
Conversion: No

### 9 Floor 1 - Bedroom

---



Dimensions: 11'4" x 11'5"  
Area: 129 sq. ft  
Counted as living area: Yes

Heated: Yes  
Finished: Yes  
Enclosed: Yes  
Contiguous: Yes  
Permitted: Yes  
Wet space: No  
Addition: No  
Conversion: No

### 10 Floor 1 - Primary Bedroom

---



Dimensions: 12'3" x 15'10"  
Area: 195 sq. ft  
Counted as living area: Yes

Heated: Yes  
Finished: Yes  
Enclosed: Yes  
Contiguous: Yes  
Permitted: Yes  
Wet space: No  
Addition: No  
Conversion: No

### 11 Floor 1 - Bedroom

---



Dimensions: 11'3" x 16'10"  
Area: 189 sq. ft  
Counted as living area: Yes

Heated: Yes  
Finished: Yes  
Enclosed: Yes  
Contiguous: Yes  
Permitted: Yes  
Wet space: No  
Addition: No  
Conversion: No

**12** Floor 1 - Foyer



Dimensions: 5'8" x 5'8"  
Area: 32 sq. ft  
Counted as living area: Yes

Heated: Yes  
Finished: Yes  
Enclosed: Yes  
Contiguous: Yes  
Permitted: Yes  
Wet space: No  
Addition: No  
Conversion: No

**13** Floor 1 - Deck



Dimensions: 15'5" x 13'9"  
Area: 212 sq. ft  
Counted as living area: No

Heated: No  
Finished: No  
Enclosed: No  
Contiguous: Yes  
Permitted: Yes  
Wet space: No  
Addition: No  
Conversion: No

**14** Floor 1 - Dining Area



Dimensions: 17'10" x 9'6"  
Area: 169 sq. ft  
Counted as living area: Yes

Heated: Yes  
Finished: Yes  
Enclosed: Yes  
Contiguous: Yes  
Permitted: Yes  
Wet space: No  
Addition: No  
Conversion: No

**15** Floor 1 - Bath

---



Dimensions: 7'8" x 5'1"  
Area: 39 sq. ft  
Counted as living area: Yes

Heated: Yes  
Finished: Yes  
Enclosed: Yes  
Contiguous: Yes  
Permitted: Yes  
Wet space: Yes  
Addition: No  
Conversion: No

**16** Floor 1 - Laundry

---



Dimensions: 5'10" x 5'6"  
Area: 32 sq. ft  
Counted as living area: Yes

Heated: Yes  
Finished: Yes  
Enclosed: Yes  
Contiguous: Yes  
Permitted: Yes  
Wet space: No  
Addition: No  
Conversion: No