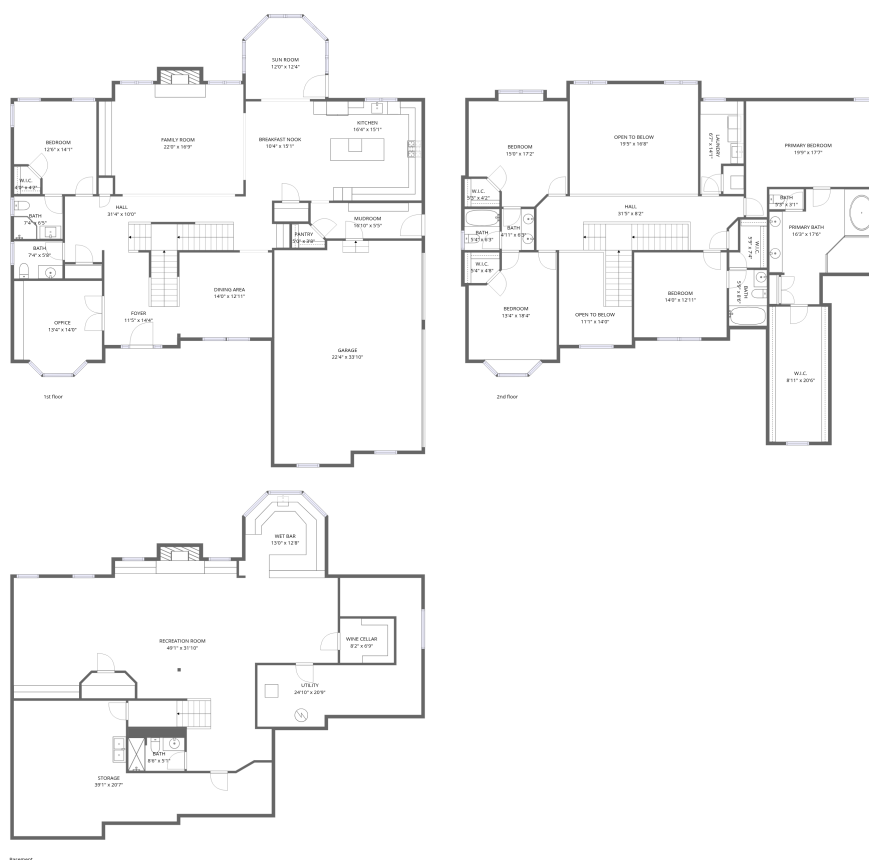


## Home data report

**43w707 North Sunset Views Drive, Lily Lake, St. Charles, Kane County, Illinois, United States, 60175**



**Total Area: 5460 sq. ft**

Basement: 1338 sq. ft, 1st Floor: 2161 sq. ft, 2nd Floor: 1961 sq. ft

Excluded: Storage 494 sq. ft, Utility 306 sq. ft, Fireplace 30 sq. ft, Garage 722 sq. ft, Open to below 445 sq. ft, Walls: 360 sq. ft

## Property summary



Home data report

**43w707 North Sunset Views Drive, Lily Lake, St. Charles, Kane  
County, Illinois, United States, 60175**



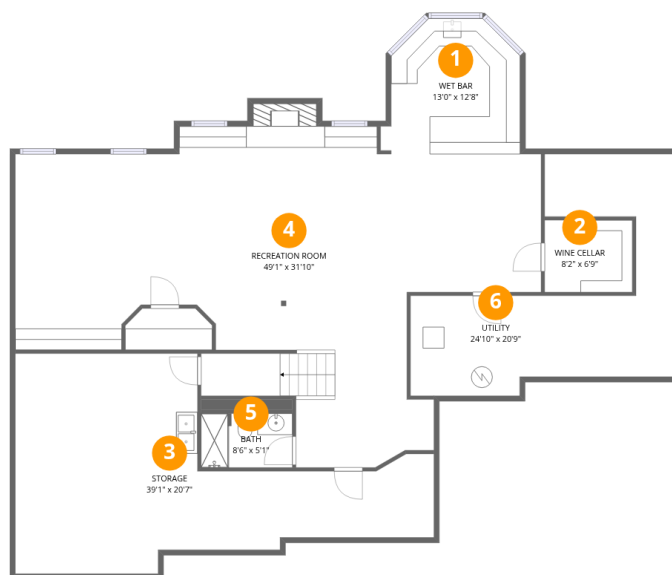
**1**  
Half baths



**1**  
Garages

## Home data report

43w707 North Sunset Views Drive, Lily Lake, St. Charles, Kane County, Illinois, United States, 60175



## Room dimensions

Floor 1 Below grade

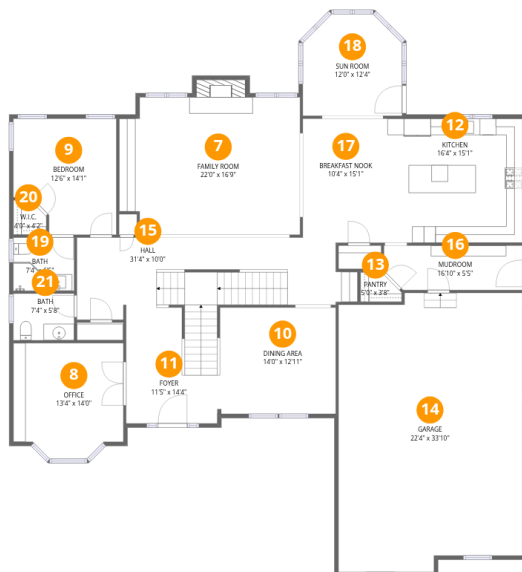
Total:1338sqft

Excluded: 815sqft

#		Dimensions	sqft	Counted as living area
1	Wet Bar	13'0" x 12'8"	143 sq. ft	Yes
2	Wine Cellar	8'2" x 6'9"	55 sq. ft	Yes
3	Storage	39'1" x 20'7"	494 sq. ft	No
4	Recreation Room	49'1" x 31'10"	1015 sq. ft	Yes
5	Bath	8'6" x 5'1"	43 sq. ft	Yes
6	Utility	24'10" x 20'9"	306 sq. ft	No

Home data report

**43w707 North Sunset Views Drive, Lily Lake, St. Charles, Kane County, Illinois, United States, 60175**



## Room dimensions

Floor 2

Total:2161sqft Excluded: 737sqft

#		Dimensions	sqft	Counted as living area
7	Family Room	22'0" x 16'9"	365 sq. ft	Yes
8	Office	13'4" x 14'0"	173 sq. ft	Yes
9	Bedroom	12'6" x 14'1"	158 sq. ft	Yes
10	Dining Area	14'0" x 12'11"	181 sq. ft	Yes
11	Foyer	11'5" x 14'4"	162 sq. ft	Yes
12	Kitchen	16'4" x 15'1"	246 sq. ft	Yes
13	Pantry	5'0" x 3'8"	15 sq. ft	Yes
14	Garage	22'4" x 33'10"	722 sq. ft	No
15	Hall	31'4" x 10'0"	274 sq. ft	Yes
16	Mudroom	16'10" x 5'5"	88 sq. ft	Yes
17	Breakfast Nook	10'4" x 15'1"	155 sq. ft	Yes

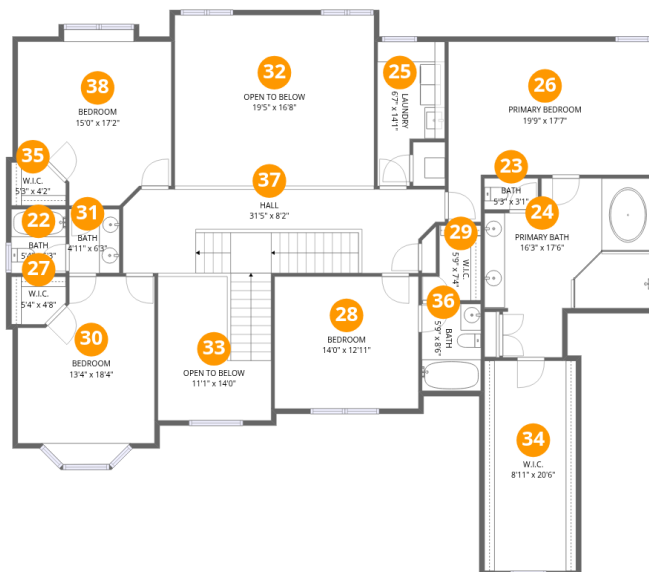
Home data report

**43w707 North Sunset Views Drive, Lily Lake, St. Charles, Kane County, Illinois, United States, 60175**

#		Dimensions	sqft	Counted as living area
18	Sun Room	12'0" x 12'4"	136 sq. ft	Yes
19	Bath	7'4" x 6'5"	48 sq. ft	Yes
20	W.I.C.	4'0" x 4'2"	15 sq. ft	Yes
21	Bath	7'4" x 5'8"	42 sq. ft	Yes

Home data report

**43w707 North Sunset Views Drive, Lily Lake, St. Charles, Kane County, Illinois, United States, 60175**



**Room dimensions**

Floor 3

Total:1961sqft Excluded: 445sqft

#		Dimensions	sqft	Counted as living area
22	Bath	5'4" x 6'3"	33 sq. ft	Yes
23	Bath	5'3" x 3'1"	16 sq. ft	Yes
24	Primary Bath	16'3" x 17'6"	214 sq. ft	Yes
25	Laundry	6'7" x 14'1"	77 sq. ft	Yes
26	Primary Bedroom	19'9" x 17'7"	271 sq. ft	Yes
27	W.I.C.	5'4" x 4'8"	23 sq. ft	Yes
28	Bedroom	14'0" x 12'11"	181 sq. ft	Yes
29	W.I.C.	5'9" x 7'4"	34 sq. ft	Yes
30	Bedroom	13'4" x 18'4"	208 sq. ft	Yes
31	Bath	4'11" x 6'3"	31 sq. ft	Yes
32	Open To Below	19'5" x 16'8"	324 sq. ft	No

Home data report

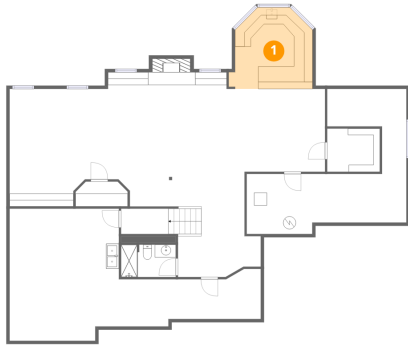
**43w707 North Sunset Views Drive, Lily Lake, St. Charles, Kane County, Illinois, United States, 60175**

#		Dimensions	sqft	Counted as living area
33	Open To Below	11'1" x 14'0"	120 sq. ft	No
34	W.I.C.	8'11" x 20'6"	183 sq. ft	Yes
35	W.I.C.	5'3" x 4'2"	20 sq. ft	Yes
36	Bath	5'9" x 8'6"	49 sq. ft	Yes
37	Hall	31'5" x 8'2"	289 sq. ft	Yes
38	Bedroom	15'0" x 17'2"	220 sq. ft	Yes

**43w707 North Sunset Views Drive, Lily Lake, St. Charles, Kane County, Illinois, United States, 60175**

**1 Floor 1 - Wet Bar**

---

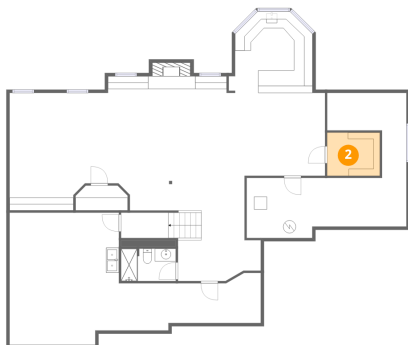


**Dimensions:** 13'0" x 12'8"  
**Area:** 143 sq. ft  
**Counted as living area:** Yes

**Heated:** Yes  
**Finished:** Yes  
**Enclosed:** Yes  
**Contiguous:** Yes  
**Permitted:** Yes  
**Wet space:** No  
**Addition:** No  
**Conversion:** No

**2 Floor 1 - Wine Cellar**

---

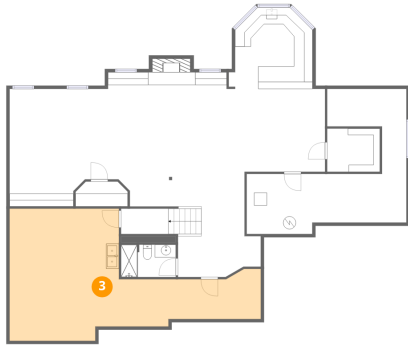


**Dimensions:** 8'2" x 6'9"  
**Area:** 55 sq. ft  
**Counted as living area:** No

**Heated:** No  
**Finished:** Yes  
**Enclosed:** Yes  
**Contiguous:** Yes  
**Permitted:** Yes  
**Wet space:** No  
**Addition:** No  
**Conversion:** No

43w707 North Sunset Views Drive, Lily Lake, St. Charles, Kane County, Illinois, United States, 60175

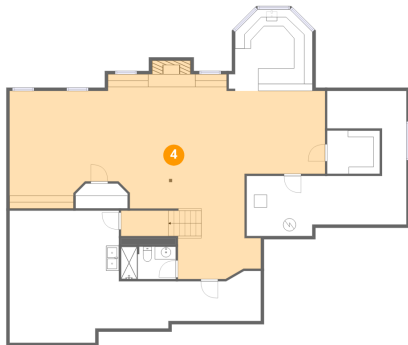
**3** Floor 1 - Storage



Dimensions: 39'1" x 20'7"  
Area: 494 sq. ft  
Counted as living area: No

Heated: No  
Finished: No  
Enclosed: No  
Contiguous: Yes  
Permitted: Yes  
Wet space: No  
Addition: No  
Conversion: No

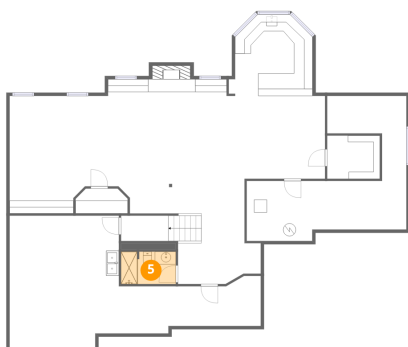
**4** Floor 1 - Recreation Room



Dimensions: 49'1" x 31'10"  
Area: 1015 sq. ft  
Counted as living area: Yes

Heated: Yes  
Finished: Yes  
Enclosed: Yes  
Contiguous: Yes  
Permitted: Yes  
Wet space: No  
Addition: No  
Conversion: No

**5** Floor 1 - Bath

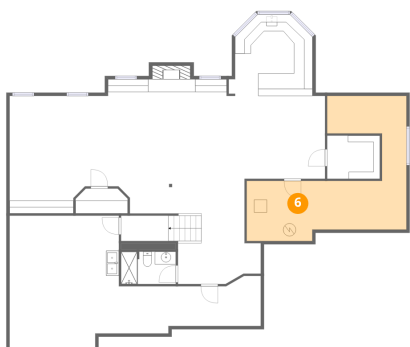


Dimensions: 8'6" x 5'1"  
Area: 43 sq. ft  
Counted as living area: Yes

Heated: Yes  
Finished: Yes  
Enclosed: Yes  
Contiguous: Yes  
Permitted: Yes  
Wet space: Yes  
Addition: No  
Conversion: No

43w707 North Sunset Views Drive, Lily Lake, St. Charles, Kane County, Illinois, United States, 60175

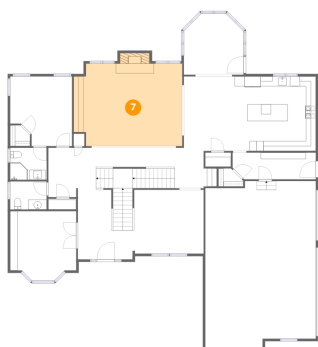
**6** Floor 1 - Utility



Dimensions: 24'10" x 20'9"  
Area: 306 sq. ft  
Counted as living area: No

Heated: Yes  
Finished: No  
Enclosed: Yes  
Contiguous: Yes  
Permitted: Yes  
Wet space: No  
Addition: No  
Conversion: No

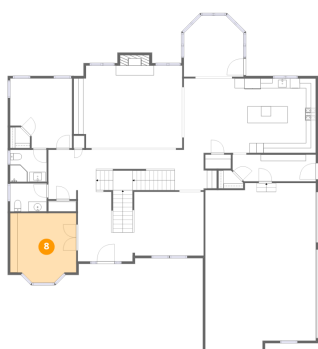
**7** Floor 2 - Family Room



Dimensions: 22'0" x 16'9"  
Area: 365 sq. ft  
Counted as living area: Yes

Heated: Yes  
Finished: Yes  
Enclosed: Yes  
Contiguous: Yes  
Permitted: Yes  
Wet space: No  
Addition: No  
Conversion: No

**8** Floor 2 - Office

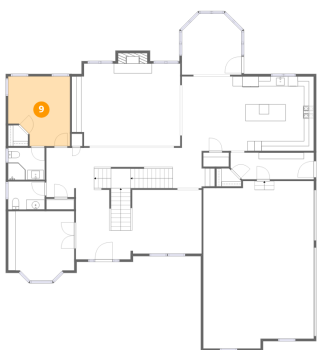


Dimensions: 13'4" x 14'0"  
Area: 173 sq. ft  
Counted as living area: Yes

Heated: Yes  
Finished: Yes  
Enclosed: Yes  
Contiguous: Yes  
Permitted: Yes  
Wet space: No  
Addition: No  
Conversion: No

# 43w707 North Sunset Views Drive, Lily Lake, St. Charles, Kane County, Illinois, United States, 60175

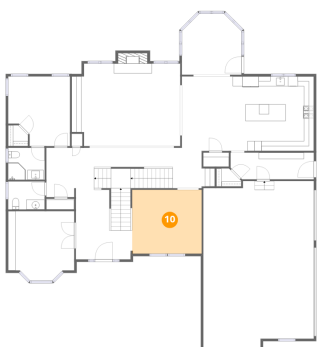
## 9 Floor 2 - Bedroom



Dimensions: 12'6" x 14'1"  
Area: 158 sq. ft  
Counted as living area: Yes

Heated: Yes  
Finished: Yes  
Enclosed: Yes  
Contiguous: Yes  
Permitted: Yes  
Wet space: No  
Addition: No  
Conversion: No

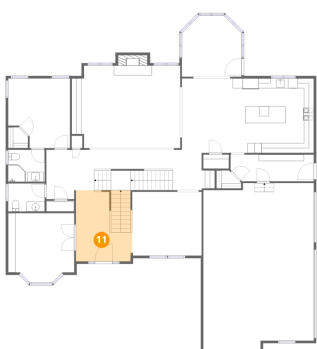
## 10 Floor 2 - Dining Area



Dimensions: 14'0" x 12'11"  
Area: 181 sq. ft  
Counted as living area: Yes

Heated: Yes  
Finished: Yes  
Enclosed: Yes  
Contiguous: Yes  
Permitted: Yes  
Wet space: No  
Addition: No  
Conversion: No

## 11 Floor 2 - Foyer

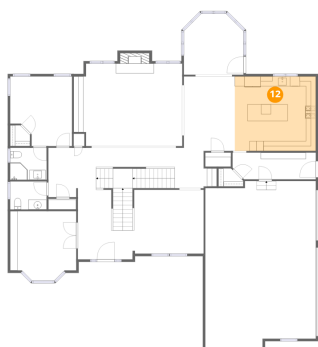


Dimensions: 11'5" x 14'4"  
Area: 162 sq. ft  
Counted as living area: Yes

Heated: Yes  
Finished: Yes  
Enclosed: Yes  
Contiguous: Yes  
Permitted: Yes  
Wet space: No  
Addition: No  
Conversion: No

43w707 North Sunset Views Drive, Lily Lake, St. Charles, Kane County, Illinois, United States, 60175

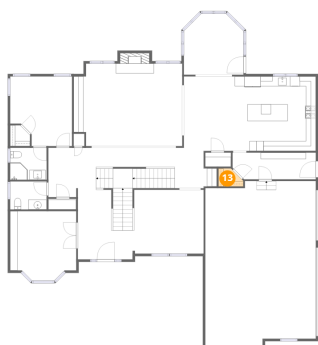
**12** Floor 2 - Kitchen



Dimensions: 16'4" x 15'1"  
Area: 246 sq. ft  
Counted as living area: Yes

Heated: Yes  
Finished: Yes  
Enclosed: Yes  
Contiguous: Yes  
Permitted: Yes  
Wet space: No  
Addition: No  
Conversion: No

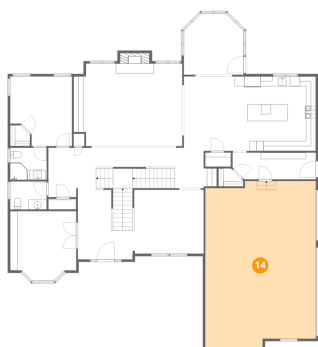
**13** Floor 2 - Pantry



Dimensions: 5'0" x 3'8"  
Area: 15 sq. ft  
Counted as living area: Yes

Heated: Yes  
Finished: Yes  
Enclosed: Yes  
Contiguous: Yes  
Permitted: Yes  
Wet space: No  
Addition: No  
Conversion: No

**14** Floor 2 - Garage

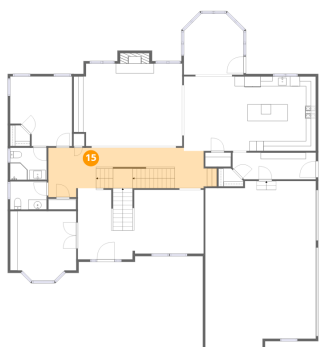


Dimensions: 22'4" x 33'10"  
Area: 722 sq. ft  
Counted as living area: No

Heated: No  
Finished: No  
Enclosed: Yes  
Contiguous: Yes  
Permitted: Yes  
Wet space: No  
Addition: No  
Conversion: No

43w707 North Sunset Views Drive, Lily Lake, St. Charles, Kane County, Illinois, United States, 60175

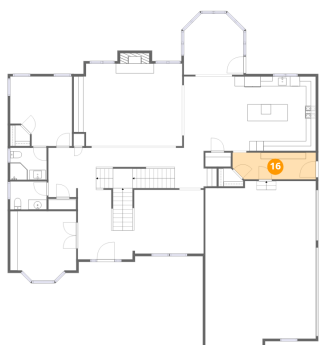
**15** Floor 2 - Hall



Dimensions: 31'4" x 10'0"  
Area: 274 sq. ft  
Counted as living area: Yes

Heated: Yes  
Finished: Yes  
Enclosed: Yes  
Contiguous: Yes  
Permitted: Yes  
Wet space: No  
Addition: No  
Conversion: No

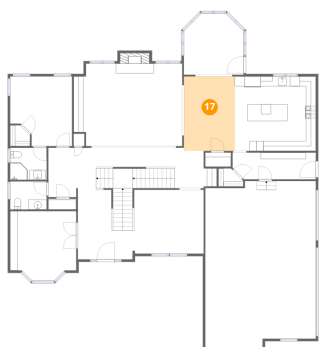
**16** Floor 2 - Mudroom



Dimensions: 16'10" x 5'5"  
Area: 88 sq. ft  
Counted as living area: Yes

Heated: Yes  
Finished: Yes  
Enclosed: Yes  
Contiguous: Yes  
Permitted: Yes  
Wet space: No  
Addition: No  
Conversion: No

**17** Floor 2 - Breakfast Nook



Dimensions: 10'4" x 15'1"  
Area: 155 sq. ft  
Counted as living area: Yes

Heated: Yes  
Finished: Yes  
Enclosed: Yes  
Contiguous: Yes  
Permitted: Yes  
Wet space: No  
Addition: No  
Conversion: No

43w707 North Sunset Views Drive, Lily Lake, St. Charles, Kane County, Illinois, United States, 60175

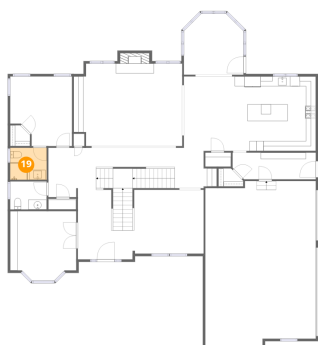
**18** Floor 2 - Sun Room



Dimensions: 12'0" x 12'4"  
Area: 136 sq. ft  
Counted as living area: Yes

Heated: Yes  
Finished: Yes  
Enclosed: Yes  
Contiguous: Yes  
Permitted: Yes  
Wet space: No  
Addition: No  
Conversion: No

**19** Floor 2 - Bath



Dimensions: 7'4" x 6'5"  
Area: 48 sq. ft  
Counted as living area: Yes

Heated: Yes  
Finished: Yes  
Enclosed: Yes  
Contiguous: Yes  
Permitted: Yes  
Wet space: Yes  
Addition: No  
Conversion: No

**20** Floor 2 - W.I.C.

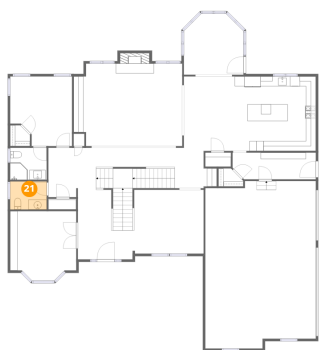


Dimensions: 4'0" x 4'2"  
Area: 15 sq. ft  
Counted as living area: Yes

Heated: Yes  
Finished: Yes  
Enclosed: Yes  
Contiguous: Yes  
Permitted: Yes  
Wet space: No  
Addition: No  
Conversion: No

43w707 North Sunset Views Drive, Lily Lake, St. Charles, Kane County, Illinois, United States, 60175

**21** Floor 2 - Bath



Dimensions: 7'4" x 5'8"  
Area: 42 sq. ft  
Counted as living area: Yes

Heated: Yes  
Finished: Yes  
Enclosed: Yes  
Contiguous: Yes  
Permitted: Yes  
Wet space: Yes  
Addition: No  
Conversion: No

**22** Floor 3 - Bath



Dimensions: 5'4" x 6'3"  
Area: 33 sq. ft  
Counted as living area: Yes

Heated: Yes  
Finished: Yes  
Enclosed: Yes  
Contiguous: Yes  
Permitted: Yes  
Wet space: Yes  
Addition: No  
Conversion: No

**23** Floor 3 - Bath

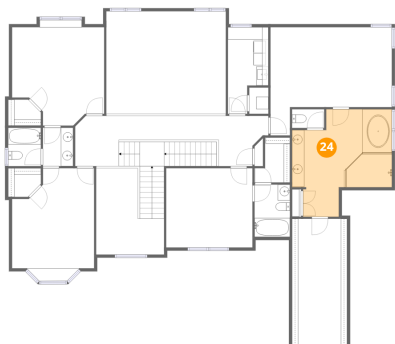


Dimensions: 5'3" x 3'1"  
Area: 16 sq. ft  
Counted as living area: Yes

Heated: Yes  
Finished: Yes  
Enclosed: Yes  
Contiguous: Yes  
Permitted: Yes  
Wet space: Yes  
Addition: No  
Conversion: No

43w707 North Sunset Views Drive, Lily Lake, St. Charles, Kane County, Illinois, United States, 60175

**24** Floor 3 - Primary Bath



Dimensions: 16'3" x 17'6"  
Area: 214 sq. ft  
Counted as living area: Yes

Heated: Yes  
Finished: Yes  
Enclosed: Yes  
Contiguous: Yes  
Permitted: Yes  
Wet space: Yes  
Addition: No  
Conversion: No

**25** Floor 3 - Laundry



Dimensions: 6'7" x 14'1"  
Area: 77 sq. ft  
Counted as living area: Yes

Heated: Yes  
Finished: Yes  
Enclosed: Yes  
Contiguous: Yes  
Permitted: Yes  
Wet space: No  
Addition: No  
Conversion: No

**26** Floor 3 - Primary Bedroom



Dimensions: 19'9" x 17'7"  
Area: 271 sq. ft  
Counted as living area: Yes

Heated: Yes  
Finished: Yes  
Enclosed: Yes  
Contiguous: Yes  
Permitted: Yes  
Wet space: No  
Addition: No  
Conversion: No

43w707 North Sunset Views Drive, Lily Lake, St. Charles, Kane County, Illinois, United States, 60175

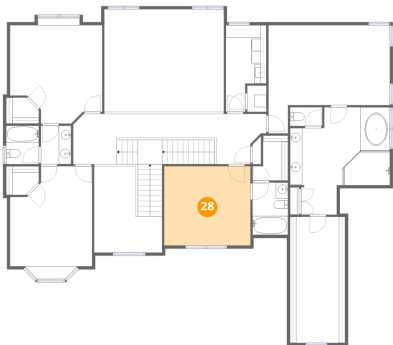
**27** Floor 3 - W.I.C.



Dimensions: 5'4" x 4'8"  
Area: 23 sq. ft  
Counted as living area: Yes

Heated: Yes  
Finished: Yes  
Enclosed: Yes  
Contiguous: Yes  
Permitted: Yes  
Wet space: No  
Addition: No  
Conversion: No

**28** Floor 3 - Bedroom



Dimensions: 14'0" x 12'11"  
Area: 181 sq. ft  
Counted as living area: Yes

Heated: Yes  
Finished: Yes  
Enclosed: Yes  
Contiguous: Yes  
Permitted: Yes  
Wet space: No  
Addition: No  
Conversion: No

**29** Floor 3 - W.I.C.

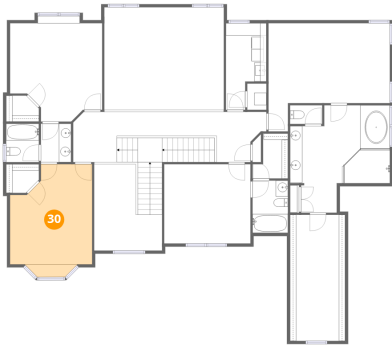


Dimensions: 5'9" x 7'4"  
Area: 34 sq. ft  
Counted as living area: Yes

Heated: Yes  
Finished: Yes  
Enclosed: Yes  
Contiguous: Yes  
Permitted: Yes  
Wet space: No  
Addition: No  
Conversion: No

43w707 North Sunset Views Drive, Lily Lake, St. Charles, Kane County, Illinois, United States, 60175

**30** Floor 3 - Bedroom



Dimensions: 13'4" x 18'4"  
Area: 208 sq. ft  
Counted as living area: Yes

Heated: Yes  
Finished: Yes  
Enclosed: Yes  
Contiguous: Yes  
Permitted: Yes  
Wet space: No  
Addition: No  
Conversion: No

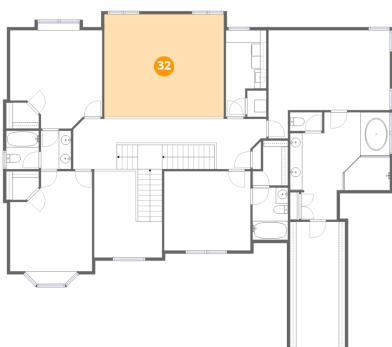
**31** Floor 3 - Bath



Dimensions: 4'11" x 6'3"  
Area: 31 sq. ft  
Counted as living area: Yes

Heated: Yes  
Finished: Yes  
Enclosed: Yes  
Contiguous: Yes  
Permitted: Yes  
Wet space: Yes  
Addition: No  
Conversion: No

**32** Floor 3 - Open To Below

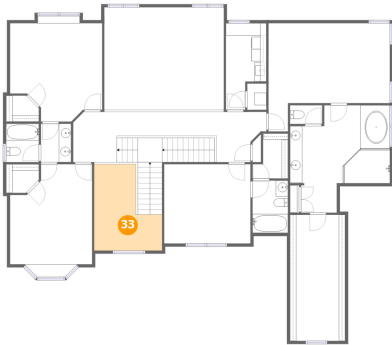


Dimensions: 19'5" x 16'8"  
Area: 324 sq. ft  
Counted as living area: No

Heated: No  
Finished: No  
Enclosed: No  
Contiguous: Yes  
Permitted: No  
Wet space: No  
Addition: No  
Conversion: No

43w707 North Sunset Views Drive, Lily Lake, St. Charles, Kane County, Illinois, United States, 60175

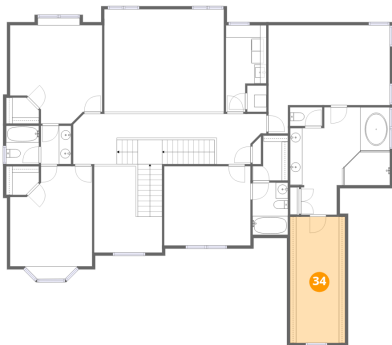
**33** Floor 3 - Open To Below



Dimensions: 11'1" x 14'0"  
Area: 120 sq. ft  
Counted as living area: No

Heated: No  
Finished: No  
Enclosed: No  
Contiguous: Yes  
Permitted: No  
Wet space: No  
Addition: No  
Conversion: No

**34** Floor 3 - W.I.C.



Dimensions: 8'11" x 20'6"  
Area: 183 sq. ft  
Counted as living area: Yes

Heated: Yes  
Finished: Yes  
Enclosed: Yes  
Contiguous: Yes  
Permitted: Yes  
Wet space: No  
Addition: No  
Conversion: No

**35** Floor 3 - W.I.C.



Dimensions: 5'3" x 4'2"  
Area: 20 sq. ft  
Counted as living area: Yes

Heated: Yes  
Finished: Yes  
Enclosed: Yes  
Contiguous: Yes  
Permitted: Yes  
Wet space: No  
Addition: No  
Conversion: No

43w707 North Sunset Views Drive, Lily Lake, St. Charles, Kane County, Illinois, United States, 60175

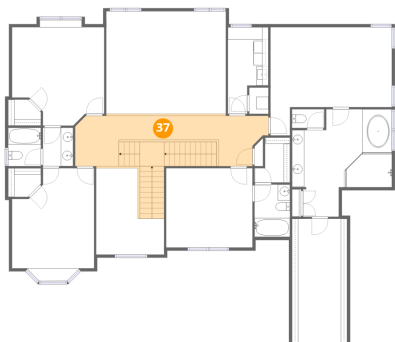
**36** Floor 3 - Bath



Dimensions: 5'9" x 8'6"  
Area: 49 sq. ft  
Counted as living area: Yes

Heated: Yes  
Finished: Yes  
Enclosed: Yes  
Contiguous: Yes  
Permitted: Yes  
Wet space: Yes  
Addition: No  
Conversion: No

**37** Floor 3 - Hall



Dimensions: 31'5" x 8'2"  
Area: 289 sq. ft  
Counted as living area: Yes

Heated: Yes  
Finished: Yes  
Enclosed: Yes  
Contiguous: Yes  
Permitted: Yes  
Wet space: No  
Addition: No  
Conversion: No

**38** Floor 3 - Bedroom



Dimensions: 15'0" x 17'2"  
Area: 220 sq. ft  
Counted as living area: Yes

Heated: Yes  
Finished: Yes  
Enclosed: Yes  
Contiguous: Yes  
Permitted: Yes  
Wet space: No  
Addition: No  
Conversion: No