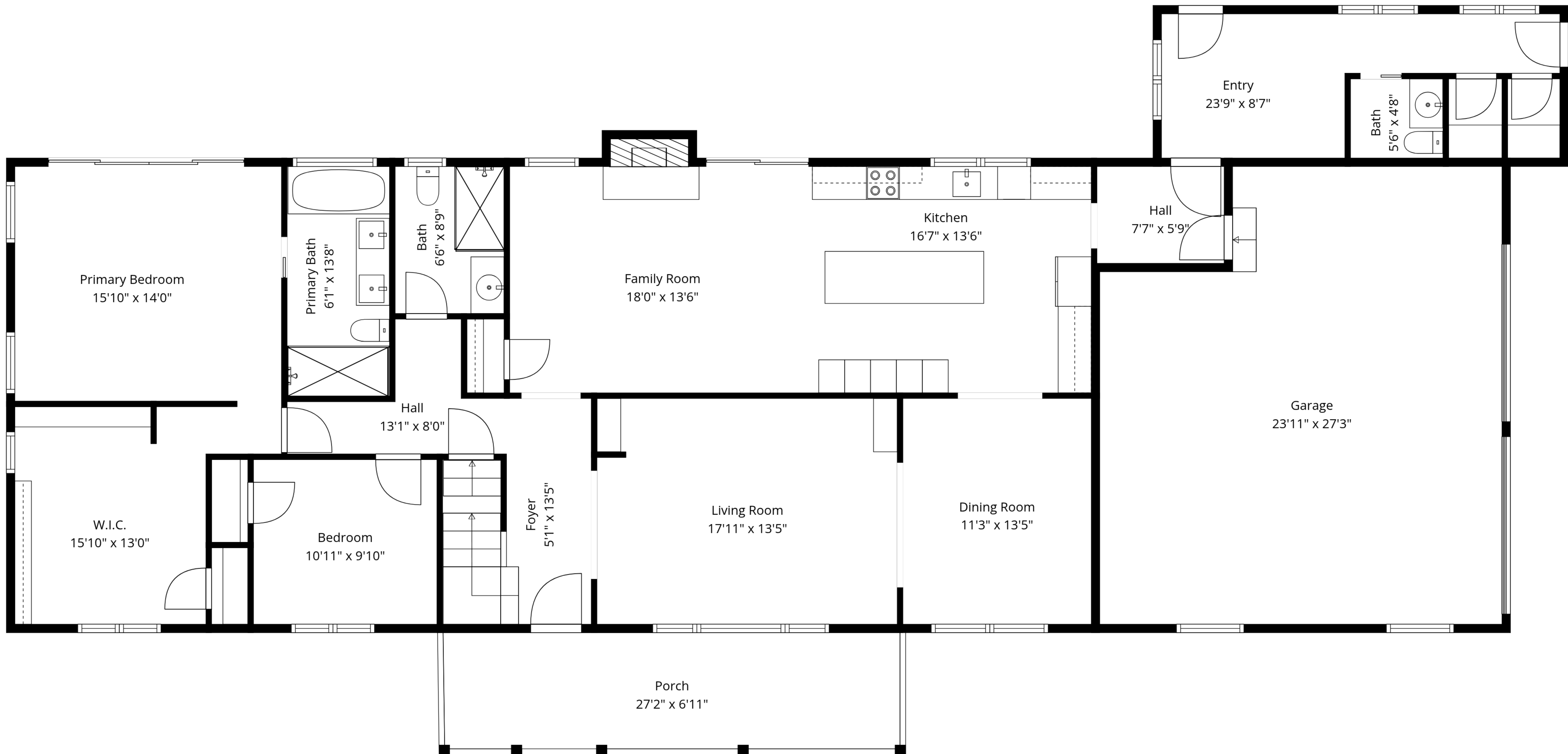


TOTAL: 3501 sq. ft

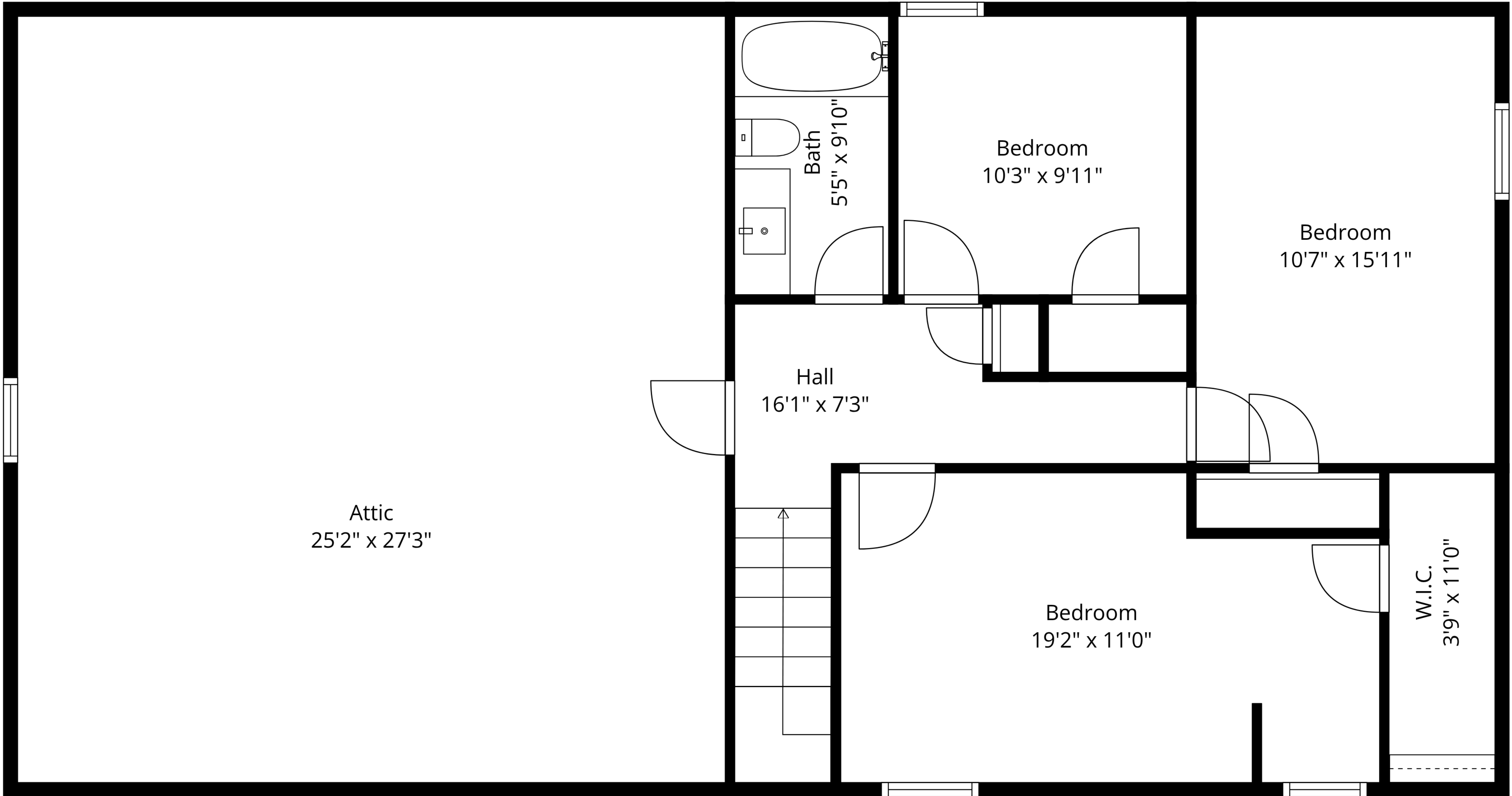
Basement: 797 sq. ft, 1st floor: 1996 sq. ft, 2nd floor: 708 sq. ft
 EXCLUDED AREAS: LOW CEILING: 1049 sq. ft, UTILITY: 296 sq. ft, GARAGE: 603 sq. ft,
 PORCH: 188 sq. ft, FIREPLACE: 9 sq. ft, ATTIC: 328 sq. ft,
 WALLS: 328 sq. ft



TOTAL: 3501 sq. ft

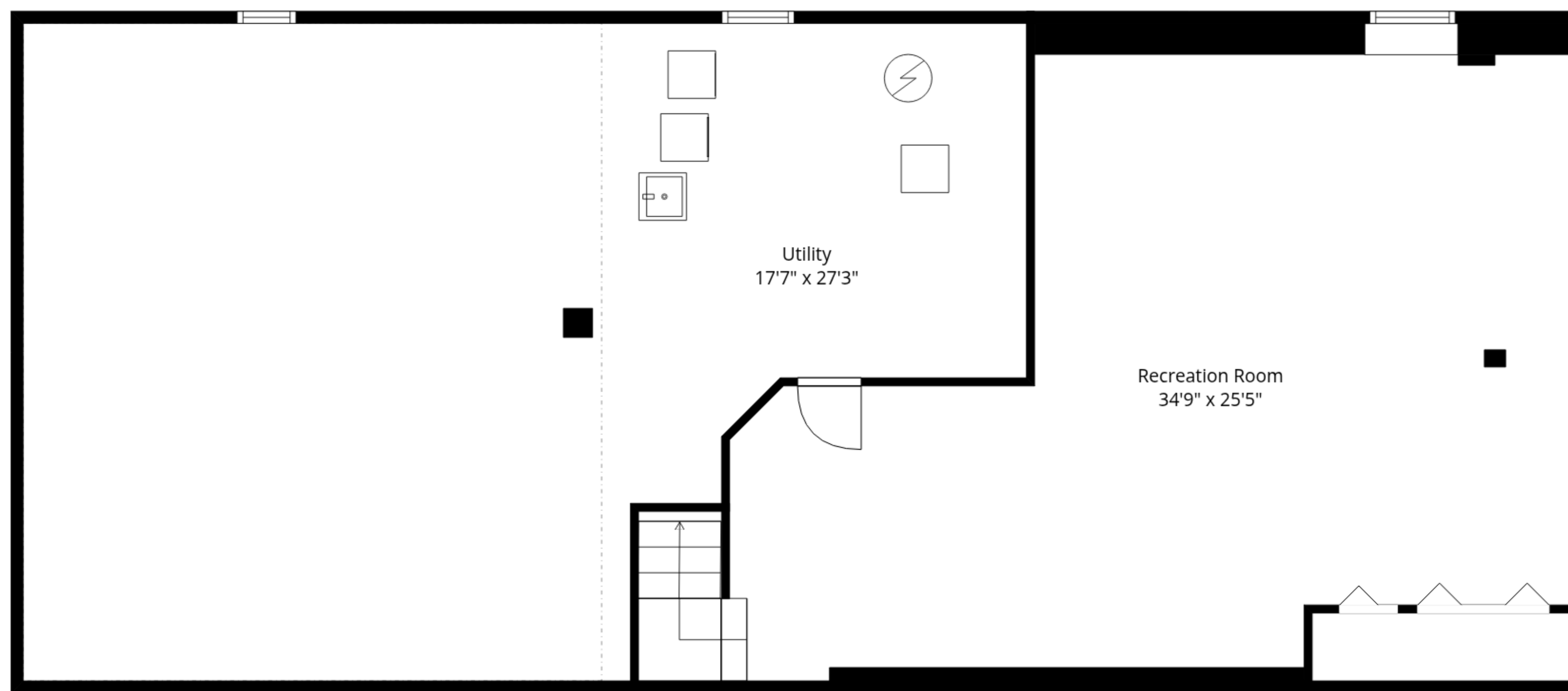
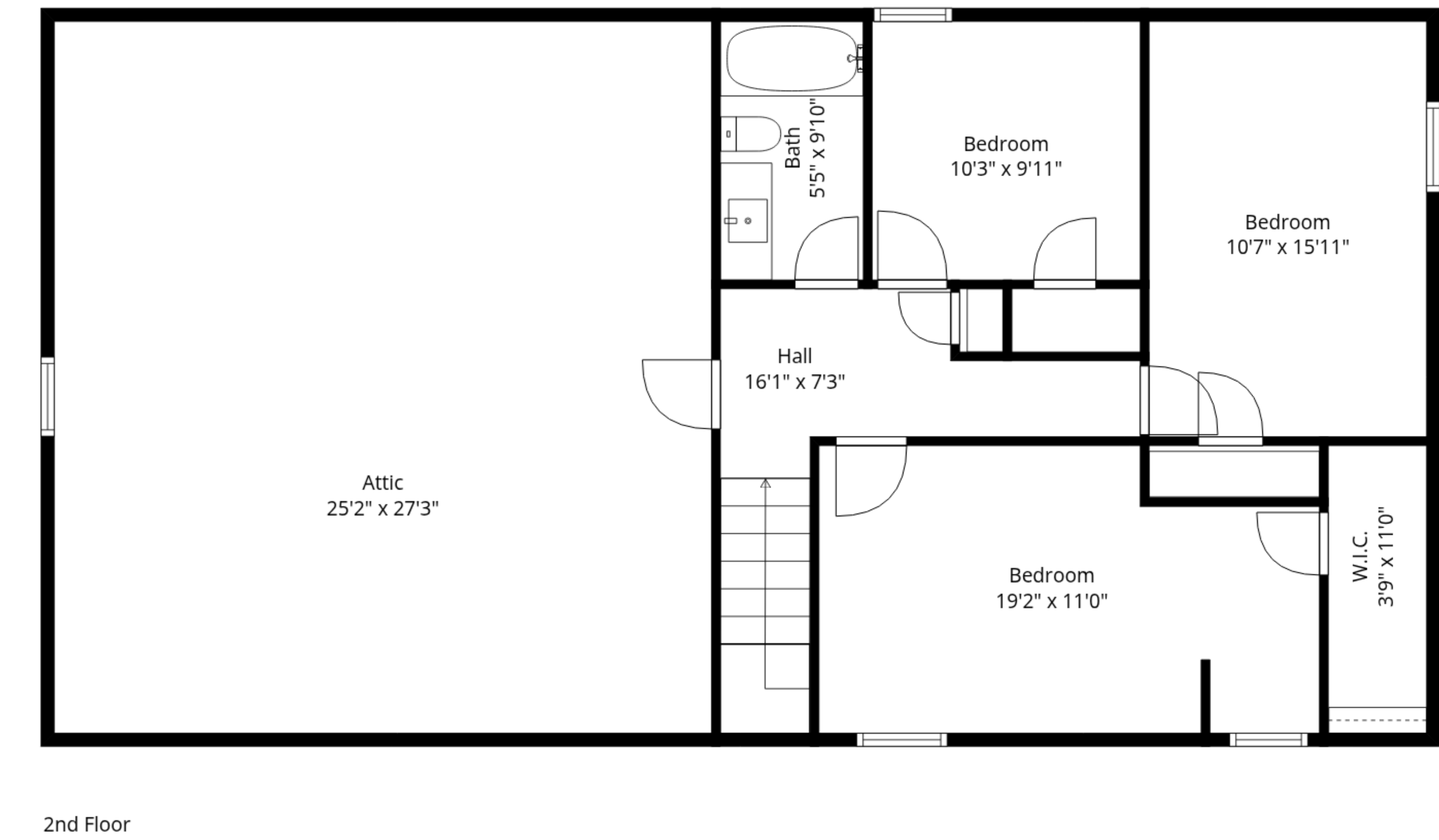
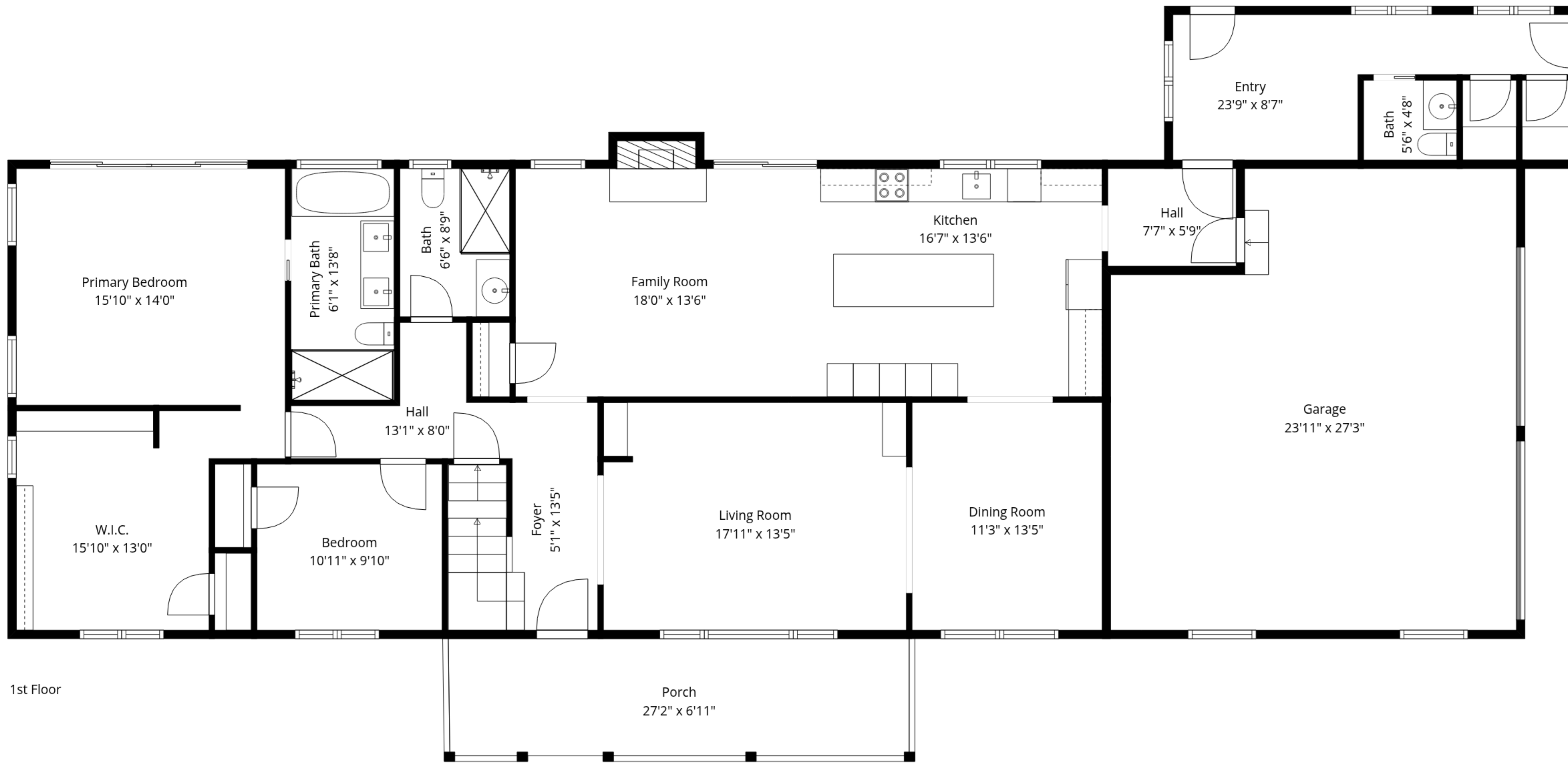
Basement: 797 sq. ft, 1st floor: 1996 sq. ft, 2nd floor: 708 sq. ft
 EXCLUDED AREAS: LOW CEILING: 1049 sq. ft, UTILITY: 296 sq. ft, GARAGE: 603 sq. ft,
 PORCH: 188 sq. ft, FIREPLACE: 9 sq. ft, ATTIC: 328 sq. ft,
 WALLS: 328 sq. ft

Measurements Are Approximate - Deemed Highly Reliable But Not Guaranteed



TOTAL: 3501 sq. ft

Basement: 797 sq. ft, 1st floor: 1996 sq. ft, 2nd floor: 708 sq. ft
 EXCLUDED AREAS: LOW CEILING: 1049 sq. ft, UTILITY: 296 sq. ft, GARAGE: 603 sq. ft,
 PORCH: 188 sq. ft, FIREPLACE: 9 sq. ft, ATTIC: 328 sq. ft,
 WALLS: 328 sq. ft



TOTAL: 3501 sq. ft
 Basement: 797 sq. ft, 1st floor: 1996 sq. ft, 2nd floor: 708 sq. ft
 EXCLUDED AREAS: LOW CEILING: 1049 sq. ft, UTILITY: 296 sq. ft, GARAGE: 603 sq. ft,
 PORCH: 188 sq. ft, FIREPLACE: 9 sq. ft, ATTIC: 328 sq. ft,
 WALLS: 328 sq. ft