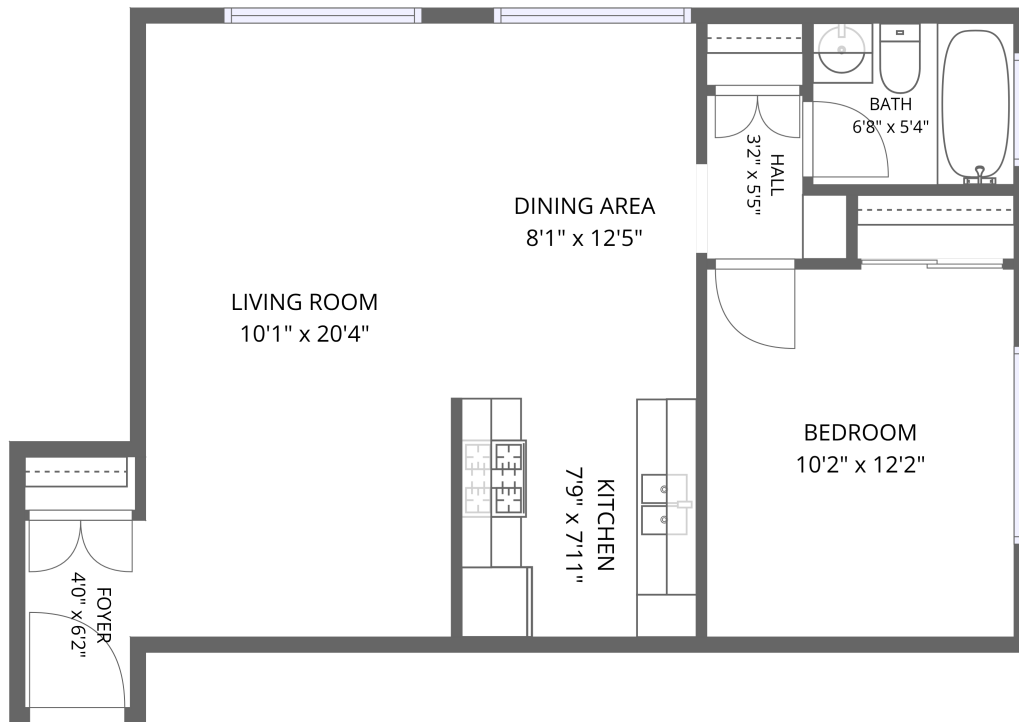


Home data report

749 Garland Ave #301, Los Angeles, CA, US



1st floor

Total Area: 615 sq. ft

1st Floor: 615 sq. ft

Excluded: Walls: 0 sq. ft

Property summary





Room dimensions

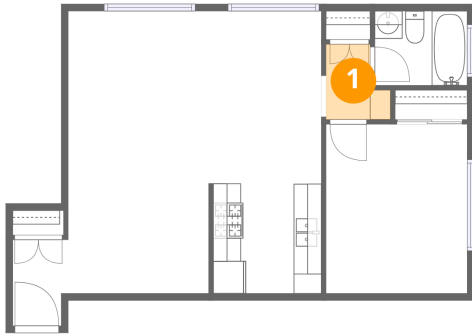
Floor 1

Total: 615 sqft

Excluded: 0 sqft

#		Dimensions	sqft	Counted as living area
1	Hall	3'2" x 5'5"	20 sq. ft	Yes
2	Foyer	4'0" x 6'2"	24 sq. ft	Yes
3	Bedroom	10'2" x 12'2"	124 sq. ft	Yes
4	Bath	6'8" x 5'4"	36 sq. ft	Yes
5	Living Room	10'1" x 20'4"	205 sq. ft	Yes
6	Dining Area	8'1" x 12'5"	101 sq. ft	Yes
7	Kitchen	7'9" x 7'11"	61 sq. ft	Yes

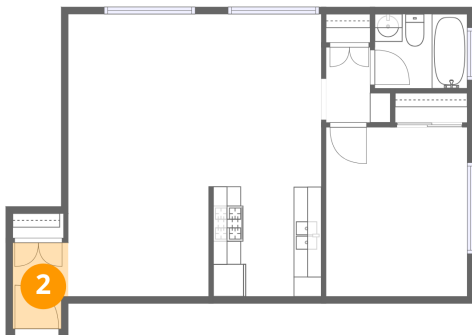
1 Floor 1 - Hall



Dimensions: 3'2" x 5'5"
Area: 20 sq. ft
Counted as living area: Yes

Heated: Yes
Finished: Yes
Enclosed: Yes
Contiguous: Yes
Permitted: Yes
Wet space: No
Addition: No
Conversion: No

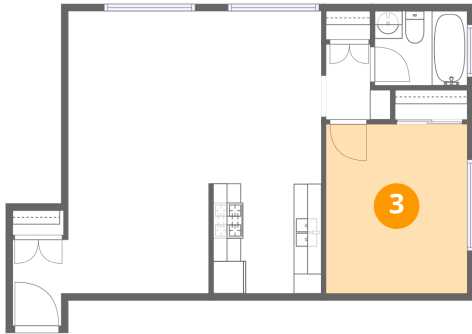
2 Floor 1 - Foyer



Dimensions: 4'0" x 6'2"
Area: 24 sq. ft
Counted as living area: Yes

Heated: Yes
Finished: Yes
Enclosed: Yes
Contiguous: Yes
Permitted: Yes
Wet space: No
Addition: No
Conversion: No

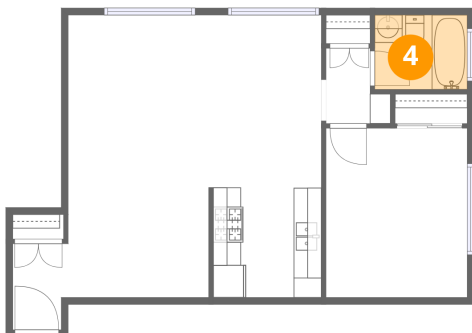
3 Floor 1 - Bedroom



Dimensions: 10'2" x 12'2"
Area: 124 sq. ft
Counted as living area: Yes

Heated: Yes
Finished: Yes
Enclosed: Yes
Contiguous: Yes
Permitted: Yes
Wet space: No
Addition: No
Conversion: No

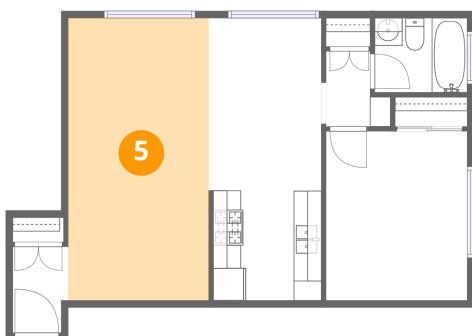
4 Floor 1 - Bath



Dimensions: 6'8" x 5'4"
Area: 36 sq. ft
Counted as living area: Yes

Heated: Yes
Finished: Yes
Enclosed: Yes
Contiguous: Yes
Permitted: Yes
Wet space: Yes
Addition: No
Conversion: No

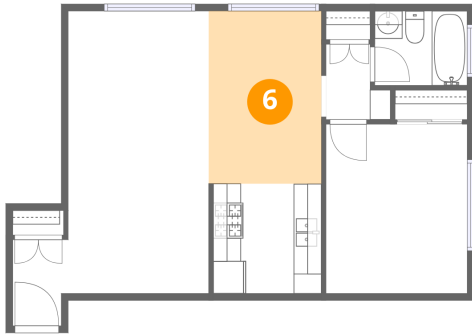
5 Floor 1 - Living Room



Dimensions: 10'1" x 20'4"
Area: 205 sq. ft
Counted as living area: Yes

Heated: Yes
Finished: Yes
Enclosed: Yes
Contiguous: Yes
Permitted: Yes
Wet space: No
Addition: No
Conversion: No

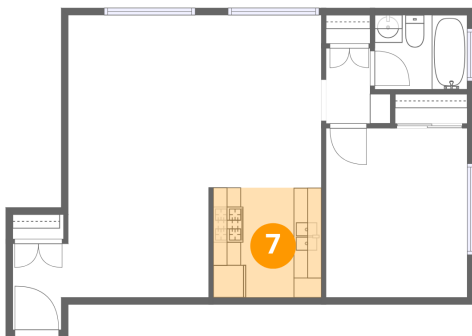
6 Floor 1 - Dining Area



Dimensions: 8'1" x 12'5"
Area: 101 sq. ft
Counted as living area: Yes

Heated: Yes
Finished: Yes
Enclosed: Yes
Contiguous: Yes
Permitted: Yes
Wet space: No
Addition: No
Conversion: No

7 Floor 1 - Kitchen



Dimensions: 7'9" x 7'11"
Area: 61 sq. ft
Counted as living area: Yes

Heated: Yes
Finished: Yes
Enclosed: Yes
Contiguous: Yes
Permitted: Yes
Wet space: No
Addition: No
Conversion: No