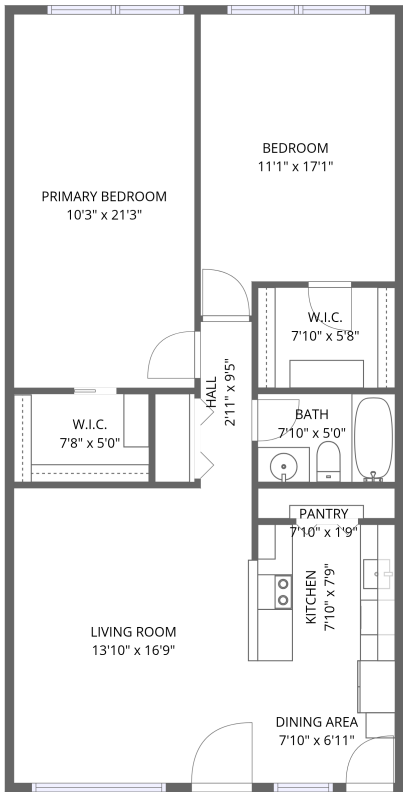


Home data report

1235 South Highland Avenue, Live Oak Park, Clearwater,  
Pinellas County, Florida, United States, 33756, unit 2-207



1st floor


Total Area: 945 sq. ft

1st Floor: 945 sq. ft

Excluded: Walls: 0 sq. ft

Property summary

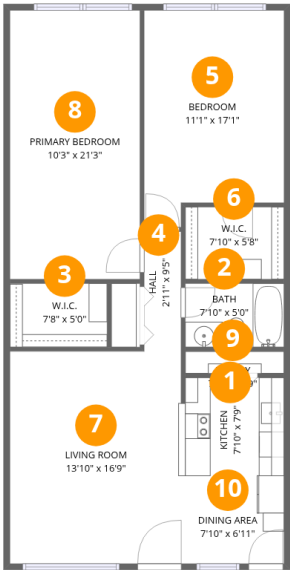
 1 Floors

 2 Bedrooms

 1 Bathrooms

Home data report

1235 South Highland Avenue, Live Oak Park, Clearwater,  
Pinellas County, Florida, United States, 33756, unit 2-207

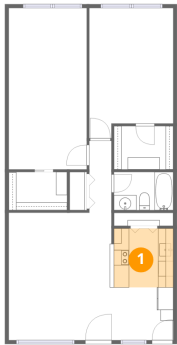


Room dimensions

Floor 1 Total:945sqft    Excluded: 0sqft

#		Dimensions	sqft	Counted as living area
1	Kitchen	7'10" x 7'9"	60 sq. ft	Yes
2	Bath	7'10" x 5'0"	39 sq. ft	Yes
3	W.I.C.	7'8" x 5'0"	38 sq. ft	Yes
4	Hall	2'11" x 9'5"	28 sq. ft	Yes
5	Bedroom	11'1" x 17'1"	173 sq. ft	Yes
6	W.I.C.	7'10" x 5'8"	44 sq. ft	Yes
7	Living Room	13'10" x 16'9"	231 sq. ft	Yes
8	Primary Bedroom	10'3" x 21'3"	218 sq. ft	Yes
9	Pantry	7'10" x 1'9"	14 sq. ft	Yes
10	Dining Area	7'10" x 6'11"	54 sq. ft	Yes

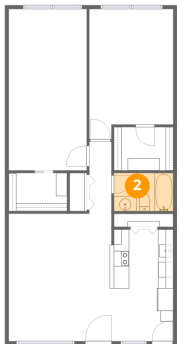
**1 Floor 1 - Kitchen**



Dimensions: 7'10" x 7'9"  
Area: 60 sq. ft  
Counted as living area: Yes

Heated: Yes  
Finished: Yes  
Enclosed: Yes  
Contiguous: Yes  
Permitted: Yes  
Wet space: No  
Addition: No  
Conversion: No

**2 Floor 1 - Bath**



Dimensions: 7'10" x 5'0"  
Area: 39 sq. ft  
Counted as living area: Yes

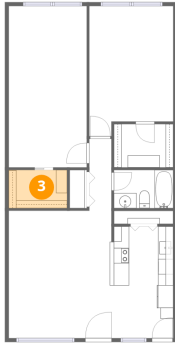
Heated: Yes  
Finished: Yes  
Enclosed: Yes  
Contiguous: Yes  
Permitted: Yes  
Wet space: Yes  
Addition: No  
Conversion: No

## Home data report

1235 South Highland Avenue, Live Oak Park, Clearwater,  
Pinellas County, Florida, United States, 33756, unit 2-207

### 3 Floor 1 - W.I.C.

---

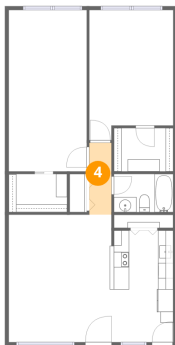


Dimensions: 7'8" x 5'0"  
Area: 38 sq. ft  
Counted as living area: Yes

Heated: Yes  
Finished: Yes  
Enclosed: Yes  
Contiguous: Yes  
Permitted: Yes  
Wet space: No  
Addition: No  
Conversion: No

### 4 Floor 1 - Hall

---

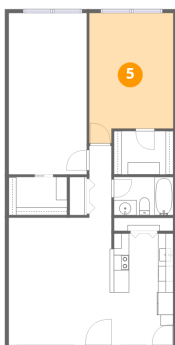


Dimensions: 2'11" x 9'5"  
Area: 28 sq. ft  
Counted as living area: Yes

Heated: Yes  
Finished: Yes  
Enclosed: Yes  
Contiguous: Yes  
Permitted: Yes  
Wet space: No  
Addition: No  
Conversion: No

### 5 Floor 1 - Bedroom

---



Dimensions: 11'1" x 17'1"  
Area: 173 sq. ft  
Counted as living area: Yes

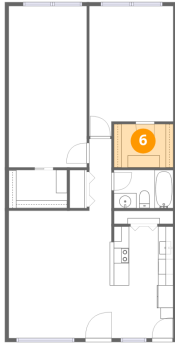
Heated: Yes  
Finished: Yes  
Enclosed: Yes  
Contiguous: Yes  
Permitted: Yes  
Wet space: No  
Addition: No  
Conversion: No

## Home data report

1235 South Highland Avenue, Live Oak Park, Clearwater,  
Pinellas County, Florida, United States, 33756, unit 2-207

### 6 Floor 1 - W.I.C.

---

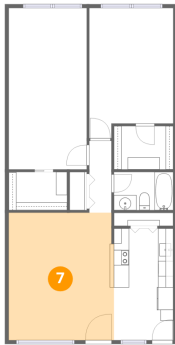


Dimensions: 7'10" x 5'8"  
Area: 44 sq. ft  
Counted as living area: Yes

Heated: Yes  
Finished: Yes  
Enclosed: Yes  
Contiguous: Yes  
Permitted: Yes  
Wet space: No  
Addition: No  
Conversion: No

### 7 Floor 1 - Living Room

---

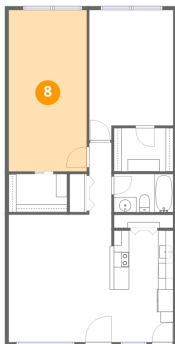


Dimensions: 13'10" x 16'9"  
Area: 231 sq. ft  
Counted as living area: Yes

Heated: Yes  
Finished: Yes  
Enclosed: Yes  
Contiguous: Yes  
Permitted: Yes  
Wet space: No  
Addition: No  
Conversion: No

### 8 Floor 1 - Primary Bedroom

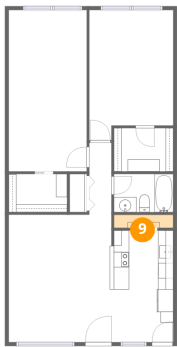
---



Dimensions: 10'3" x 21'3"  
Area: 218 sq. ft  
Counted as living area: Yes

Heated: Yes  
Finished: Yes  
Enclosed: Yes  
Contiguous: Yes  
Permitted: Yes  
Wet space: No  
Addition: No  
Conversion: No

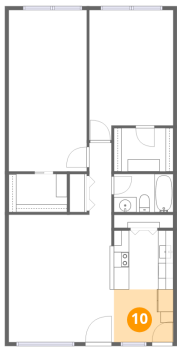
9 Floor 1 - Pantry



Dimensions: 7'10" x 1'9"  
Area: 14 sq. ft  
Counted as living area: Yes

Heated: Yes  
Finished: Yes  
Enclosed: Yes  
Contiguous: Yes  
Permitted: Yes  
Wet space: No  
Addition: No  
Conversion: No

10 Floor 1 - Dining Area



Dimensions: 7'10" x 6'11"  
Area: 54 sq. ft  
Counted as living area: Yes

Heated: Yes  
Finished: Yes  
Enclosed: Yes  
Contiguous: Yes  
Permitted: Yes  
Wet space: No  
Addition: No  
Conversion: No