

# Home data report

## 100 Brentwood Avenue, Lynchburg, Virginia, United States




**Total Area: 1817 sq. ft**

Basement: 405 sq. ft, 1st Floor: 1111 sq. ft, 2nd Floor: 301 sq. ft

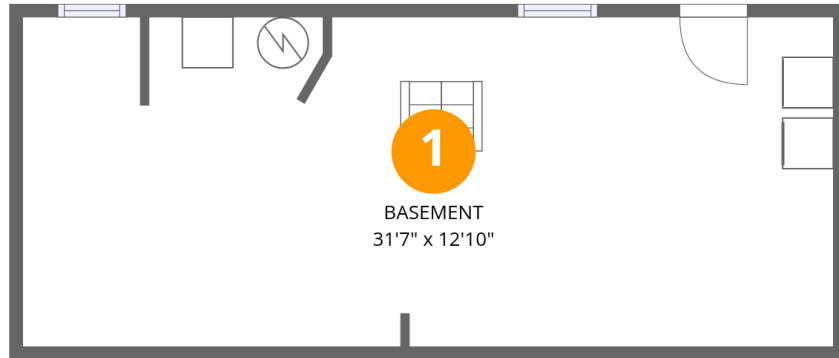
Excluded: Embedded window 13 sq. ft, Fireplace 9 sq. ft, Walls: 153 sq. ft

### Property summary

 **3** Floors

 **2** Bedrooms

 **1** Bathrooms



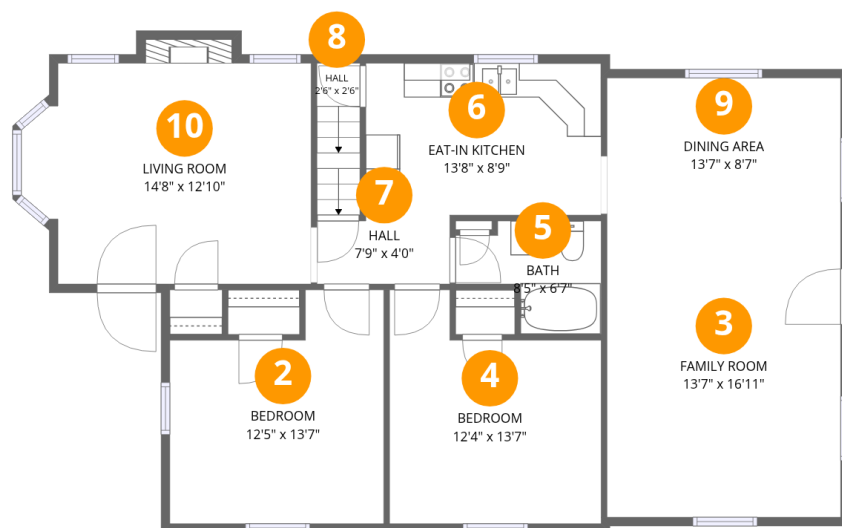
## Room dimensions

Floor 1 Below grade

Total:405sqft

Excluded: 0sqft

| # |          | Dimensions     | sqft       | Counted as living area |
|---|----------|----------------|------------|------------------------|
| 1 | Basement | 31'7" x 12'10" | 402 sq. ft | Yes                    |



## Room dimensions

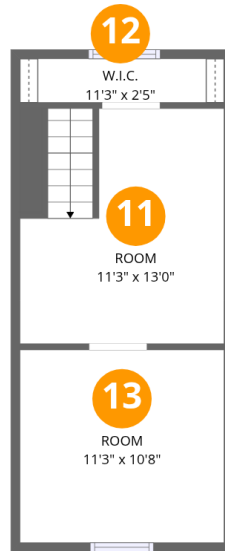
Floor 2

Total: 1111 sqft Excluded: 22 sqft

| #  |                | Dimensions     | sqft       | Counted as living area |
|----|----------------|----------------|------------|------------------------|
| 2  | Bedroom        | 12'5" x 13'7"  | 146 sq. ft | Yes                    |
| 3  | Family Room    | 13'7" x 16'11" | 230 sq. ft | Yes                    |
| 4  | Bedroom        | 12'4" x 13'7"  | 141 sq. ft | Yes                    |
| 5  | Bath           | 8'5" x 6'7"    | 43 sq. ft  | Yes                    |
| 6  | Eat-in Kitchen | 13'8" x 8'9"   | 121 sq. ft | Yes                    |
| 7  | Hall           | 7'9" x 4'0"    | 30 sq. ft  | Yes                    |
| 8  | Hall           | 2'6" x 2'6"    | 22 sq. ft  | Yes                    |
| 9  | Dining Area    | 13'7" x 8'7"   | 116 sq. ft | Yes                    |
| 10 | Living Room    | 14'8" x 12'10" | 196 sq. ft | Yes                    |

# Home data report

## 100 Brentwood Avenue, Lynchburg, Virginia, United States



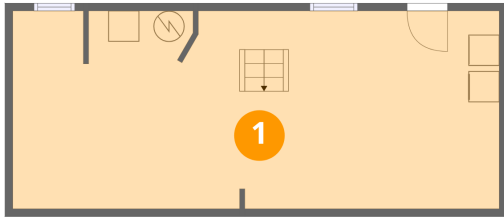
### Room dimensions

Floor 3

Total:301sqft Excluded: 0sqft

| #  |        | Dimensions    | sqft       | Counted as living area |
|----|--------|---------------|------------|------------------------|
| 11 | Room   | 11'3" x 13'0" | 135 sq. ft | Yes                    |
| 12 | W.I.C. | 11'3" x 2'5"  | 27 sq. ft  | Yes                    |
| 13 | Room   | 11'3" x 10'8" | 120 sq. ft | Yes                    |

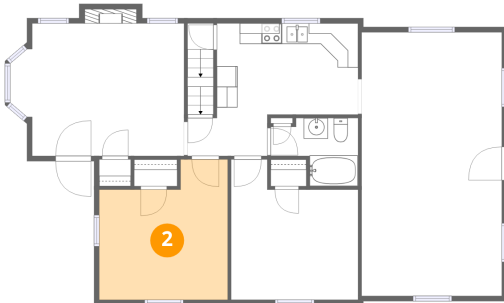
## 1 Floor 1 - Basement



Dimensions: 31'7" x 12'10"  
Area: 402 sq. ft  
Counted as living area: Yes

Heated: Yes  
Finished: Yes  
Enclosed: Yes  
Contiguous: Yes  
Permitted: Yes  
Wet space: No  
Addition: No  
Conversion: No

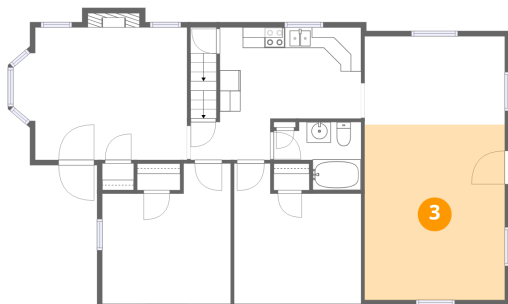
## 2 Floor 2 - Bedroom



Dimensions: 12'5" x 13'7"  
Area: 146 sq. ft  
Counted as living area: Yes

Heated: Yes  
Finished: Yes  
Enclosed: Yes  
Contiguous: Yes  
Permitted: Yes  
Wet space: No  
Addition: No  
Conversion: No

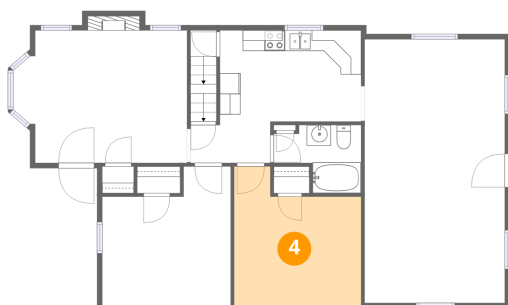
### 3 Floor 2 - Family Room



Dimensions: 13'7" x 16'11"  
Area: 230 sq. ft  
Counted as living area: Yes

Heated: Yes  
Finished: Yes  
Enclosed: Yes  
Contiguous: Yes  
Permitted: Yes  
Wet space: No  
Addition: No  
Conversion: No

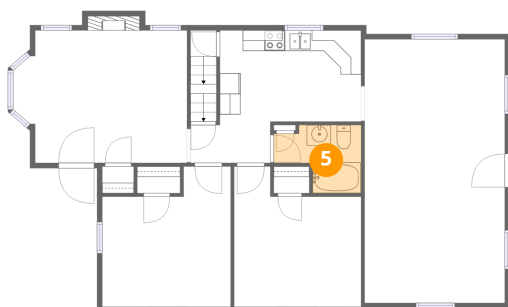
### 4 Floor 2 - Bedroom



Dimensions: 12'4" x 13'7"  
Area: 141 sq. ft  
Counted as living area: Yes

Heated: Yes  
Finished: Yes  
Enclosed: Yes  
Contiguous: Yes  
Permitted: Yes  
Wet space: No  
Addition: No  
Conversion: No

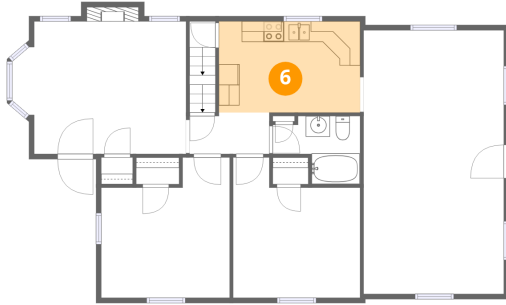
### 5 Floor 2 - Bath



Dimensions: 8'5" x 6'7"  
Area: 43 sq. ft  
Counted as living area: Yes

Heated: Yes  
Finished: Yes  
Enclosed: Yes  
Contiguous: Yes  
Permitted: Yes  
Wet space: Yes  
Addition: No  
Conversion: No

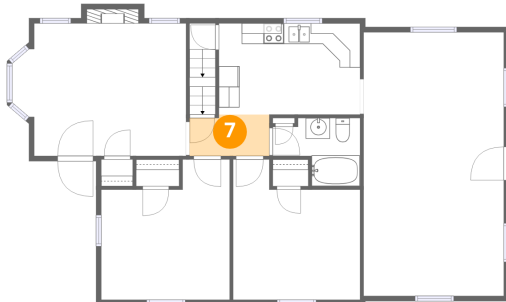
**6** Floor 2 - Eat-in Kitchen



Dimensions: 13'8" x 8'9"  
Area: 121 sq. ft  
Counted as living area: Yes

Heated: Yes  
Finished: Yes  
Enclosed: Yes  
Contiguous: Yes  
Permitted: Yes  
Wet space: No  
Addition: No  
Conversion: No

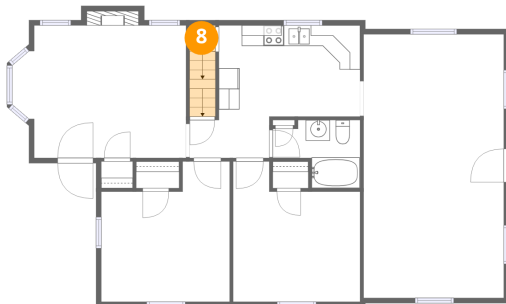
**7** Floor 2 - Hall



Dimensions: 7'9" x 4'0"  
Area: 30 sq. ft  
Counted as living area: Yes

Heated: Yes  
Finished: Yes  
Enclosed: Yes  
Contiguous: Yes  
Permitted: Yes  
Wet space: No  
Addition: No  
Conversion: No

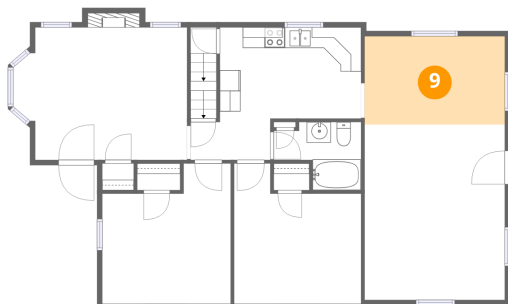
**8** Floor 2 - Hall



Dimensions: 2'6" x 2'6"  
Area: 22 sq. ft  
Counted as living area: Yes

Heated: Yes  
Finished: Yes  
Enclosed: Yes  
Contiguous: Yes  
Permitted: Yes  
Wet space: No  
Addition: No  
Conversion: No

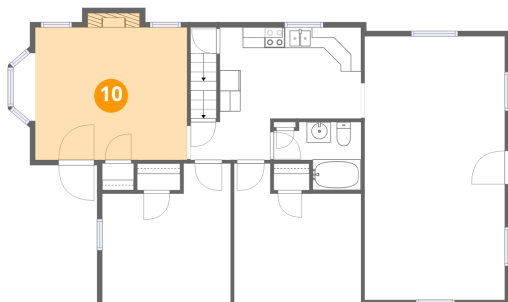
### 9 Floor 2 - Dining Area



Dimensions: 13'7" x 8'7"  
Area: 116 sq. ft  
Counted as living area: Yes

Heated: Yes  
Finished: Yes  
Enclosed: Yes  
Contiguous: Yes  
Permitted: Yes  
Wet space: No  
Addition: No  
Conversion: No

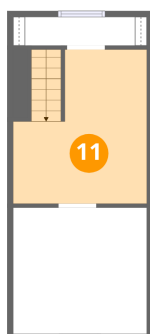
### 10 Floor 2 - Living Room



Dimensions: 14'8" x 12'10"  
Area: 196 sq. ft  
Counted as living area: Yes

Heated: Yes  
Finished: Yes  
Enclosed: Yes  
Contiguous: Yes  
Permitted: Yes  
Wet space: No  
Addition: No  
Conversion: No

### 11 Floor 3 - Room

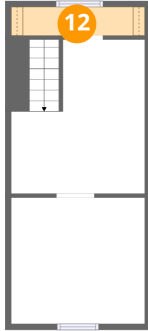


Dimensions: 11'3" x 13'0"  
Area: 135 sq. ft  
Counted as living area: Yes

Heated: Yes  
Finished: Yes  
Enclosed: Yes  
Contiguous: Yes  
Permitted: Yes  
Wet space: No  
Addition: No  
Conversion: No

**12** Floor 3 - W.I.C.

---

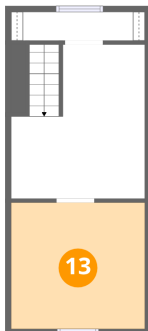


Dimensions: 11'3" x 2'5"  
Area: 27 sq. ft  
Counted as living area: Yes

Heated: Yes  
Finished: Yes  
Enclosed: Yes  
Contiguous: Yes  
Permitted: Yes  
Wet space: No  
Addition: No  
Conversion: No

**13** Floor 3 - Room

---



Dimensions: 11'3" x 10'8"  
Area: 120 sq. ft  
Counted as living area: Yes

Heated: Yes  
Finished: Yes  
Enclosed: Yes  
Contiguous: Yes  
Permitted: Yes  
Wet space: No  
Addition: No  
Conversion: No