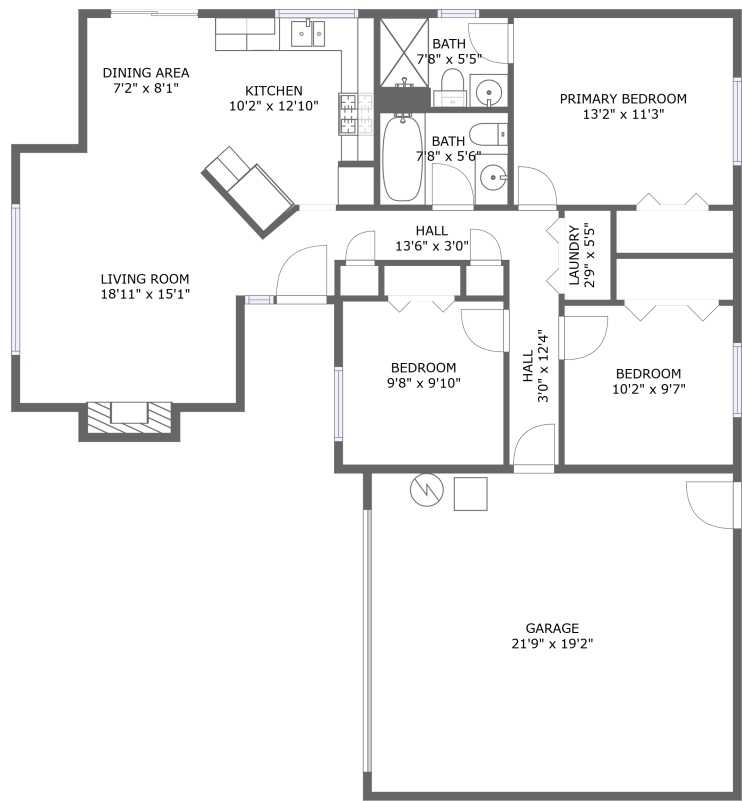


Home report

1151 Maple Street, Vernonia, Columbia County, Oregon, United States, 97064



FLOOR 1


Total Area: 1008 sq. ft


Floor 1: 1008 sq. ft

Excluded: Garage 416 sq. ft, Fireplace 11 sq. ft, Walls: 105 sq. ft

Property summary

 1 Floors

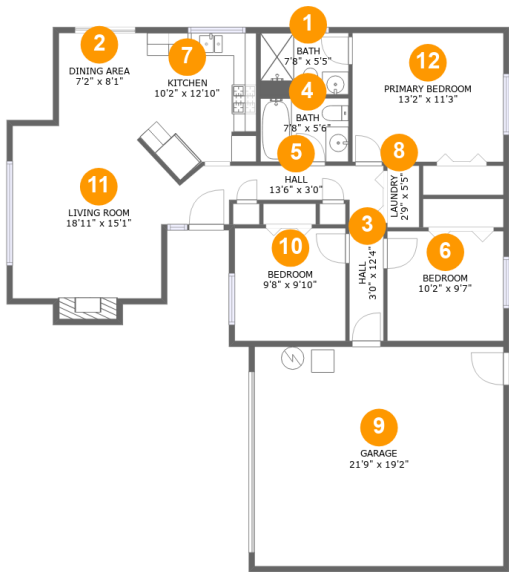
 3 Bedrooms

 2 Bathrooms

 1 Garages

Home report

1151 Maple Street, Vernonia, Columbia County, Oregon, United States, 97064



Room dimensions

Floor 1

Total:1008sqft

Excluded: 427sqft

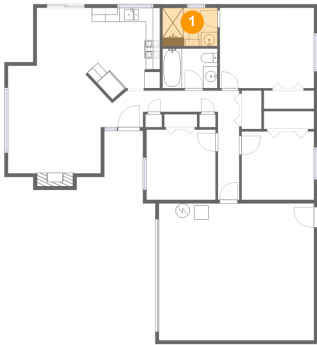
#		Max Dimensions	sqft	Included
1	Bath	7'8" x 5'5"	41 sq. ft	Yes
2	Dining Area	7'2" x 8'1"	58 sq. ft	Yes
3	Hall	3'0" x 12'4"	37 sq. ft	Yes
4	Bath	7'8" x 5'6"	43 sq. ft	Yes
5	Hall	13'6" x 3'0"	40 sq. ft	Yes
6	Bedroom	10'2" x 9'7"	97 sq. ft	Yes
7	Kitchen	10'2" x 12'10"	114 sq. ft	Yes
8	Laundry	2'9" x 5'5"	15 sq. ft	Yes
9	Garage	21'9" x 19'2"	416 sq. ft	No
10	Bedroom	9'8" x 9'10"	95 sq. ft	Yes
11	Living Room	18'11" x 15'1"	227 sq. ft	Yes

Home report

1151 Maple Street, Vernonia, Columbia County, Oregon, United States, 97064

#		Max Dimensions	sqft	Included
12	Primary Bedroom	13'2" x 11'3"	148 sq. ft	Yes

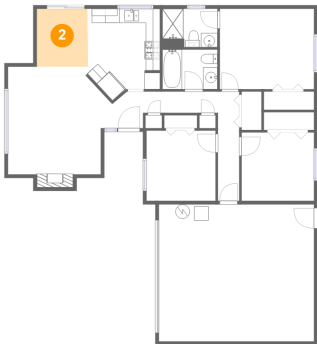
1 Floor 1 - Bath



Max Dimensions: 7'8" x 5'5"
Calculated Area: 41 sq. ft
Included: Yes

Heated: Yes
Finished: Yes
Enclosed: Yes
Contiguous: Yes
Permitted: Yes
Wet space: Yes
Addition: No
Conversion: No

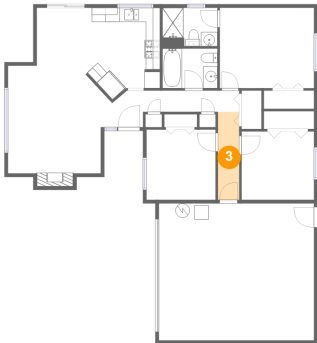
2 Floor 1 - Dining Area



Max Dimensions: 7'2" x 8'1"
Calculated Area: 58 sq. ft
Included: Yes

Heated: Yes
Finished: Yes
Enclosed: Yes
Contiguous: Yes
Permitted: Yes
Wet space: No
Addition: No
Conversion: No

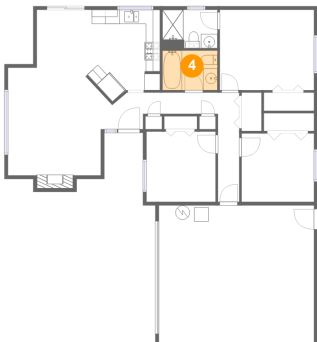
3 Floor 1 - Hall



Max Dimensions: 3'0" x 12'4"
Calculated Area: 37 sq. ft
Included: Yes

Heated: Yes
Finished: Yes
Enclosed: Yes
Contiguous: Yes
Permitted: Yes
Wet space: No
Addition: No
Conversion: No

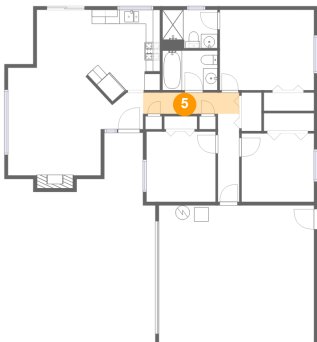
4 Floor 1 - Bath



Max Dimensions: 7'8" x 5'6"
Calculated Area: 43 sq. ft
Included: Yes

Heated: Yes
Finished: Yes
Enclosed: Yes
Contiguous: Yes
Permitted: Yes
Wet space: Yes
Addition: No
Conversion: No

5 Floor 1 - Hall

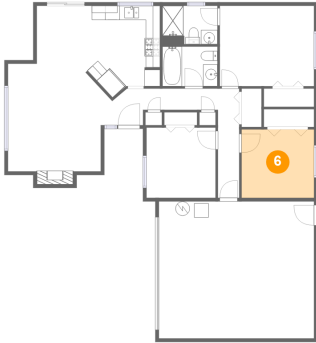


Max Dimensions: 13'6" x 3'0"
Calculated Area: 40 sq. ft
Included: Yes

Heated: Yes
Finished: Yes
Enclosed: Yes
Contiguous: Yes
Permitted: Yes
Wet space: No
Addition: No
Conversion: No

1151 Maple Street, Vernonia, Columbia County, Oregon, United States, 97064

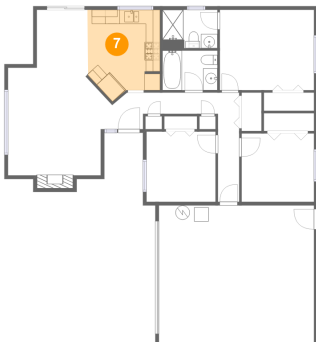
6 Floor 1 - Bedroom



Max Dimensions: 10'2" x 9'7"
Calculated Area: 97 sq. ft
Included: Yes

Heated: Yes
Finished: Yes
Enclosed: Yes
Contiguous: Yes
Permitted: Yes
Wet space: No
Addition: No
Conversion: No

7 Floor 1 - Kitchen



Max Dimensions: 10'2" x 12'10"
Calculated Area: 114 sq. ft
Included: Yes

Heated: Yes
Finished: Yes
Enclosed: Yes
Contiguous: Yes
Permitted: Yes
Wet space: No
Addition: No
Conversion: No

8 Floor 1 - Laundry

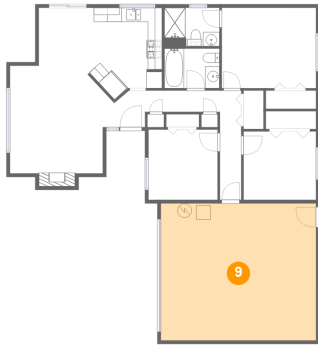


Max Dimensions: 2'9" x 5'5"
Calculated Area: 15 sq. ft
Included: Yes

Heated: Yes
Finished: Yes
Enclosed: Yes
Contiguous: Yes
Permitted: Yes
Wet space: No
Addition: No
Conversion: No

1151 Maple Street, Vernonia, Columbia County, Oregon, United States, 97064

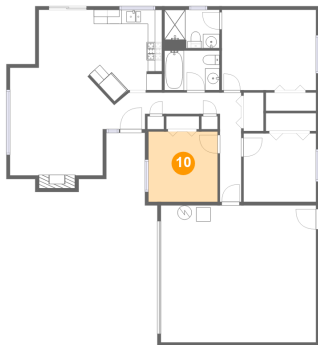
9 Floor 1 - Garage



Max Dimensions: 21'9" x 19'2"
Calculated Area: 416 sq. ft
Included: No

Heated: No
Finished: No
Enclosed: Yes
Contiguous: Yes
Permitted: Yes
Wet space: No
Addition: No
Conversion: No

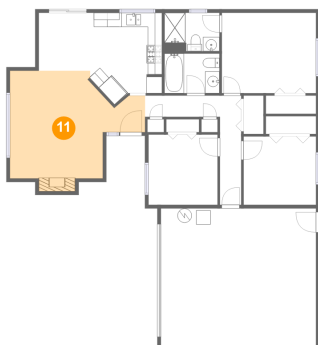
10 Floor 1 - Bedroom



Max Dimensions: 9'8" x 9'10"
Calculated Area: 95 sq. ft
Included: Yes

Heated: Yes
Finished: Yes
Enclosed: Yes
Contiguous: Yes
Permitted: Yes
Wet space: No
Addition: No
Conversion: No

11 Floor 1 - Living Room

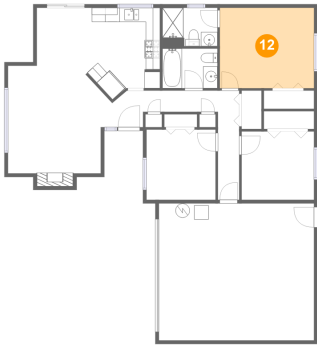


Max Dimensions: 18'11" x 15'1"
Calculated Area: 227 sq. ft
Included: Yes

Heated: Yes
Finished: Yes
Enclosed: Yes
Contiguous: Yes
Permitted: Yes
Wet space: No
Addition: No
Conversion: No

1151 Maple Street, Vernonia, Columbia County, Oregon, United States, 97064

12 Floor 1 - Primary Bedroom



Max Dimensions: 13'2" x 11'3"
Calculated Area: 148 sq. ft
Included: Yes

Heated: Yes
Finished: Yes
Enclosed: Yes
Contiguous: Yes
Permitted: Yes
Wet space: No
Addition: No
Conversion: No