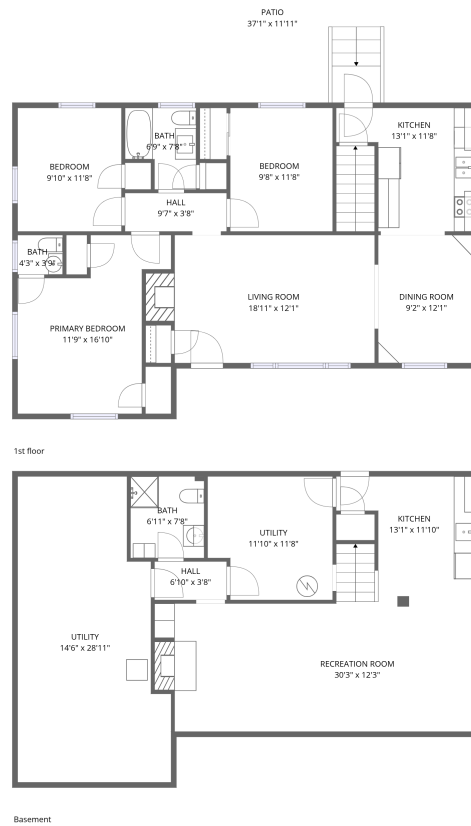


Home data report

# 4608 Elva Road Northwest, Roanoke, Virginia 24017, United States



**Total Area: 1701 sq. ft**

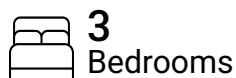
Basement: 620 sq. ft, 1st Floor: 1081 sq. ft

Excluded: Utility 491 sq. ft, Low ceiling 29 sq. ft, Patio 359 sq. ft, Walls: 145 sq. ft

## Property summary



**2**  
Floors



**3**  
Bedrooms



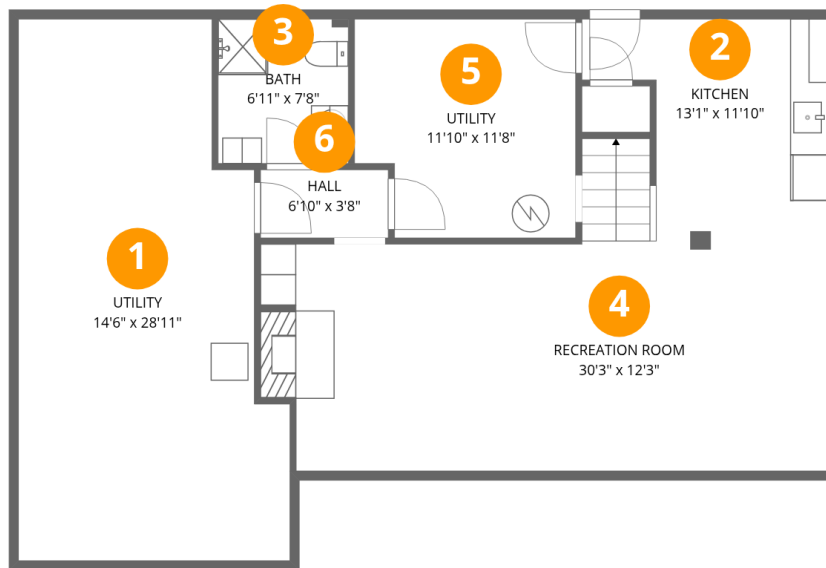
**2**  
Bathrooms



**1**  
Half baths

Home data report

4608 Elva Road Northwest, Roanoke, Virginia 24017, United States



### Room dimensions

Floor 1 Below grade

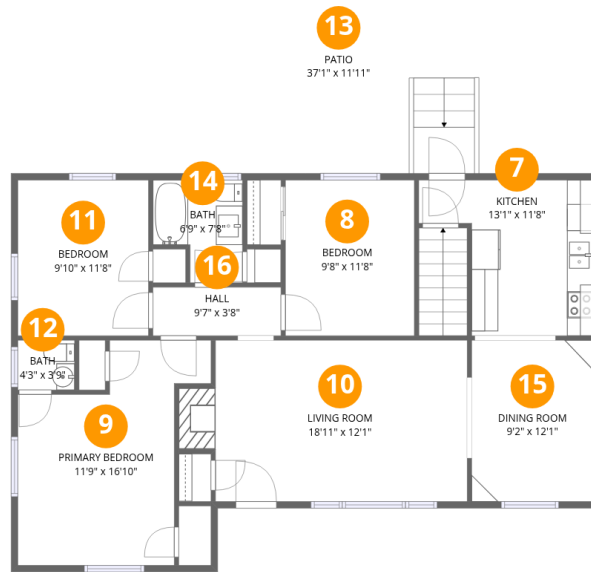
Total:620sqft

Excluded: 491sqft

#		Dimensions	sqft	Counted as living area
1	Utility	14'6" x 28'11"	419 sq. ft	No
2	Kitchen	13'1" x 11'10"	155 sq. ft	Yes
3	Bath	6'11" x 7'8"	54 sq. ft	Yes
4	Recreation Room	30'3" x 12'3"	371 sq. ft	Yes
5	Utility	11'10" x 11'8"	138 sq. ft	No
6	Hall	6'10" x 3'8"	25 sq. ft	Yes

## Home data report

4608 Elva Road Northwest, Roanoke, Virginia 24017, United States



## Room dimensions

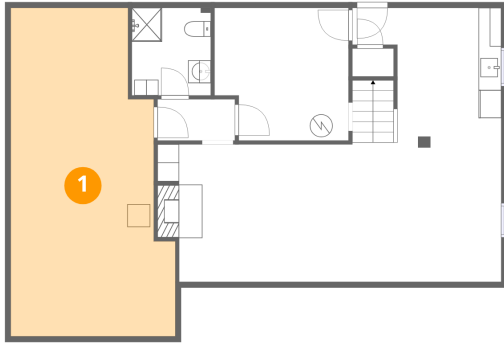
Floor 2

Total:1081sqft

Excluded: 388sqft

#		Dimensions	sqft	Counted as living area
7	Kitchen	13'1" x 11'8"	153 sq. ft	Yes
8	Bedroom	9'8" x 11'8"	113 sq. ft	Yes
9	Primary Bedroom	11'9" x 16'10"	197 sq. ft	Yes
10	Living Room	18'11" x 12'1"	229 sq. ft	Yes
11	Bedroom	9'10" x 11'8"	114 sq. ft	Yes
12	Bath	4'3" x 3'9"	16 sq. ft	Yes
13	Patio	37'1" x 11'11"	441 sq. ft	No
14	Bath	6'9" x 7'8"	52 sq. ft	Yes
15	Dining Room	9'2" x 12'1"	111 sq. ft	Yes
16	Hall	9'7" x 3'8"	35 sq. ft	Yes

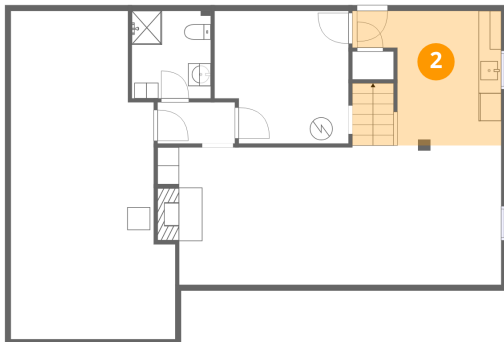
## 1 Floor 1 - Utility



Dimensions: 14'6" x 28'11"  
Area: 419 sq. ft  
Counted as living area: No

Heated: Yes  
Finished: No  
Enclosed: Yes  
Contiguous: Yes  
Permitted: Yes  
Wet space: No  
Addition: No  
Conversion: No

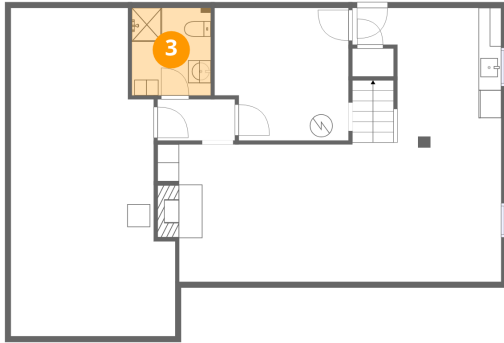
## 2 Floor 1 - Kitchen



Dimensions: 13'1" x 11'10"  
Area: 155 sq. ft  
Counted as living area: Yes

Heated: Yes  
Finished: Yes  
Enclosed: Yes  
Contiguous: Yes  
Permitted: Yes  
Wet space: No  
Addition: No  
Conversion: No

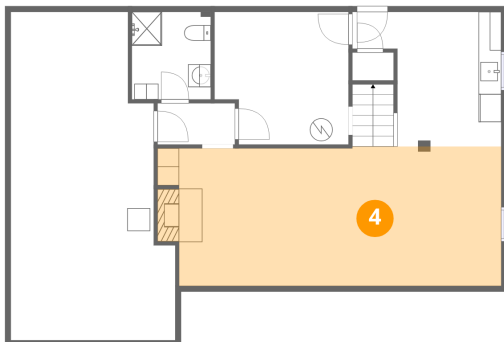
### 3 Floor 1 - Bath



Dimensions: 6'11" x 7'8"  
Area: 54 sq. ft  
Counted as living area: Yes

Heated: Yes  
Finished: Yes  
Enclosed: Yes  
Contiguous: Yes  
Permitted: Yes  
Wet space: Yes  
Addition: No  
Conversion: No

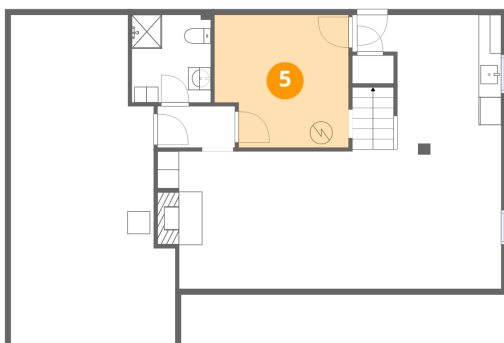
### 4 Floor 1 - Recreation Room



Dimensions: 30'3" x 12'3"  
Area: 371 sq. ft  
Counted as living area: Yes

Heated: Yes  
Finished: Yes  
Enclosed: Yes  
Contiguous: Yes  
Permitted: Yes  
Wet space: No  
Addition: No  
Conversion: No

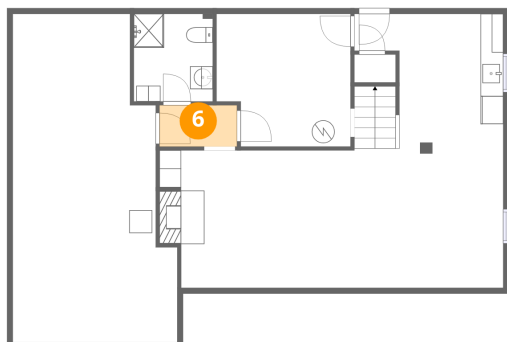
### 5 Floor 1 - Utility



Dimensions: 11'10" x 11'8"  
Area: 138 sq. ft  
Counted as living area: No

Heated: Yes  
Finished: No  
Enclosed: Yes  
Contiguous: Yes  
Permitted: Yes  
Wet space: No  
Addition: No  
Conversion: No

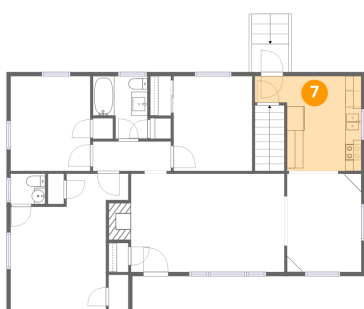
### 6 Floor 1 - Hall



Dimensions: 6'10" x 3'8"  
Area: 25 sq. ft  
Counted as living area: Yes

Heated: Yes  
Finished: Yes  
Enclosed: Yes  
Contiguous: Yes  
Permitted: Yes  
Wet space: No  
Addition: No  
Conversion: No

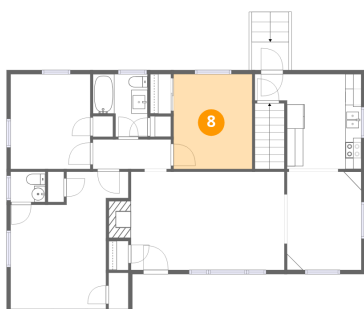
### 7 Floor 2 - Kitchen



Dimensions: 13'1" x 11'8"  
Area: 153 sq. ft  
Counted as living area: Yes

Heated: Yes  
Finished: Yes  
Enclosed: Yes  
Contiguous: Yes  
Permitted: Yes  
Wet space: No  
Addition: No  
Conversion: No

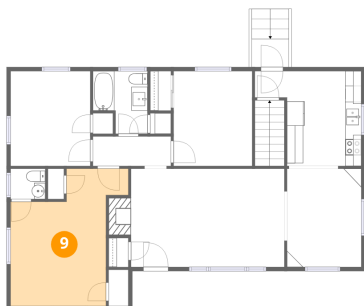
### 8 Floor 2 - Bedroom



Dimensions: 9'8" x 11'8"  
Area: 113 sq. ft  
Counted as living area: Yes

Heated: Yes  
Finished: Yes  
Enclosed: Yes  
Contiguous: Yes  
Permitted: Yes  
Wet space: No  
Addition: No  
Conversion: No

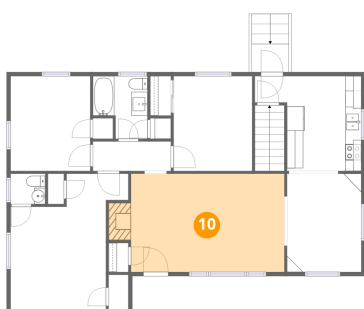
### 9 Floor 2 - Primary Bedroom



Dimensions: 11'9" x 16'10"  
Area: 197 sq. ft  
Counted as living area: Yes

Heated: Yes  
Finished: Yes  
Enclosed: Yes  
Contiguous: Yes  
Permitted: Yes  
Wet space: No  
Addition: No  
Conversion: No

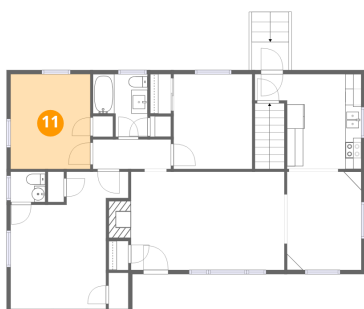
### 10 Floor 2 - Living Room



Dimensions: 18'11" x 12'1"  
Area: 229 sq. ft  
Counted as living area: Yes

Heated: Yes  
Finished: Yes  
Enclosed: Yes  
Contiguous: Yes  
Permitted: Yes  
Wet space: No  
Addition: No  
Conversion: No

### 11 Floor 2 - Bedroom



Dimensions: 9'10" x 11'8"  
Area: 114 sq. ft  
Counted as living area: Yes

Heated: Yes  
Finished: Yes  
Enclosed: Yes  
Contiguous: Yes  
Permitted: Yes  
Wet space: No  
Addition: No  
Conversion: No

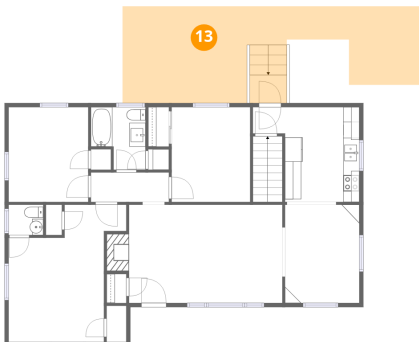
**12** Floor 2 - Bath



Dimensions: 4'3" x 3'9"  
Area: 16 sq. ft  
Counted as living area: Yes

Heated: Yes  
Finished: Yes  
Enclosed: Yes  
Contiguous: Yes  
Permitted: Yes  
Wet space: Yes  
Addition: No  
Conversion: No

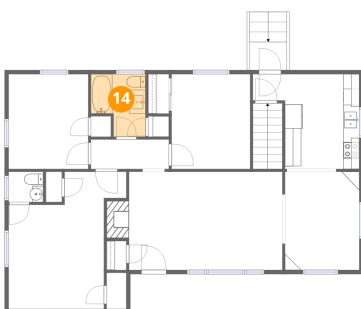
**13** Floor 2 - Patio



Dimensions: 37'1" x 11'11"  
Area: 441 sq. ft  
Counted as living area: No

Heated: No  
Finished: No  
Enclosed: No  
Contiguous: Yes  
Permitted: Yes  
Wet space: No  
Addition: No  
Conversion: No

**14** Floor 2 - Bath



Dimensions: 6'9" x 7'8"  
Area: 52 sq. ft  
Counted as living area: Yes

Heated: Yes  
Finished: Yes  
Enclosed: Yes  
Contiguous: Yes  
Permitted: Yes  
Wet space: Yes  
Addition: No  
Conversion: No

4608 Elva Road Northwest, Roanoke, Virginia 24017, United States

**15** Floor 2 - Dining Room

---

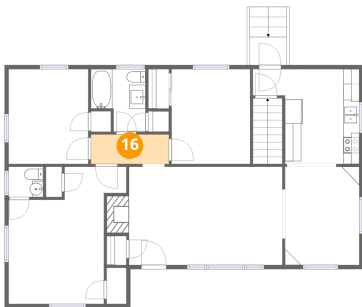


Dimensions: 9'2" x 12'1"  
Area: 111 sq. ft  
Counted as living area: Yes

Heated: Yes  
Finished: Yes  
Enclosed: Yes  
Contiguous: Yes  
Permitted: Yes  
Wet space: No  
Addition: No  
Conversion: No

**16** Floor 2 - Hall

---



Dimensions: 9'7" x 3'8"  
Area: 35 sq. ft  
Counted as living area: Yes

Heated: Yes  
Finished: Yes  
Enclosed: Yes  
Contiguous: Yes  
Permitted: Yes  
Wet space: No  
Addition: No  
Conversion: No