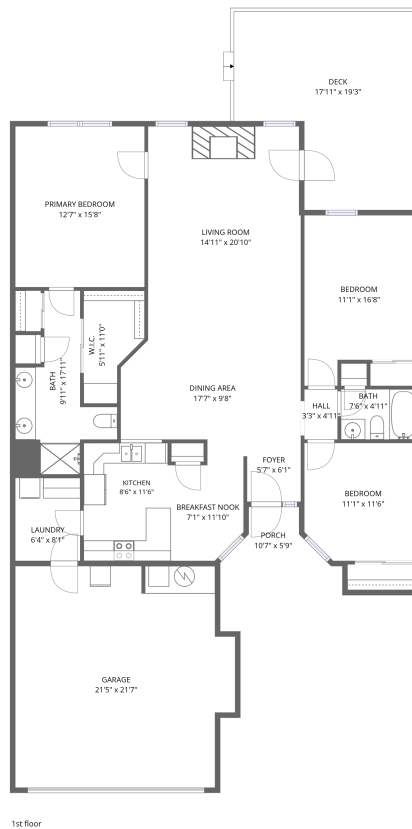


Home data report

2609 Berwick Dr, Shelbyville, IN, US



Total Area: 1538 sq. ft

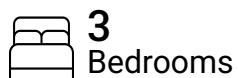
1st Floor: 1538 sq. ft

Excluded: Garage 434 sq. ft, Porch 38 sq. ft, Deck 287 sq. ft, Walls: 126 sq. ft

Property summary



1
Floors



3
Bedrooms



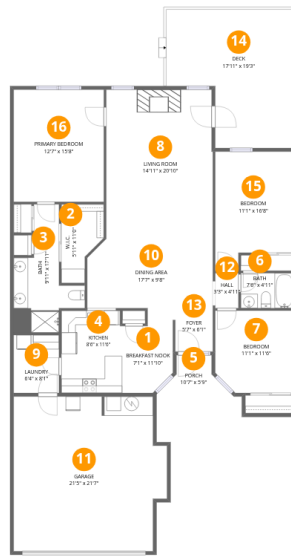
2
Bathrooms



1
Garages

Home data report

2609 Berwick Dr, Shelbyville, IN, US



Room dimensions

Floor 1

Total: 1538sqft

Excluded: 759sqft

#		Dimensions	sqft	Counted as living area
1	Breakfast Nook	7'1" x 11'10"	71 sq. ft	Yes
2	W.I.C.	5'11" x 11'0"	52 sq. ft	Yes
3	Bath	9'11" x 17'11"	104 sq. ft	Yes
4	Kitchen	8'6" x 11'6"	98 sq. ft	Yes
5	Porch	10'7" x 5'9"	38 sq. ft	No
6	Bath	7'6" x 4'11"	37 sq. ft	Yes
7	Bedroom	11'1" x 11'6"	123 sq. ft	Yes
8	Living Room	14'11" x 20'10"	309 sq. ft	Yes
9	Laundry	6'4" x 8'1"	51 sq. ft	Yes
10	Dining Area	17'7" x 9'8"	166 sq. ft	Yes
11	Garage	21'5" x 21'7"	434 sq. ft	No

Home data report

2609 Berwick Dr,Shelbyville,IN,US

#		Dimensions	sqft	Counted as living area
12	Hall	3'3" x 4'11"	16 sq. ft	Yes
13	Foyer	5'7" x 6'1"	32 sq. ft	Yes
14	Deck	17'11" x 19'3"	287 sq. ft	No
15	Bedroom	11'1" x 16'8"	164 sq. ft	Yes
16	Primary Bedroom	12'7" x 15'8"	197 sq. ft	Yes

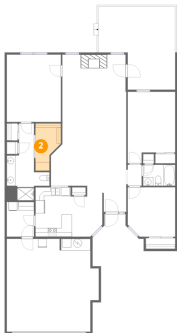
1 Floor 1 - Breakfast Nook



Dimensions: 7'1" x 11'10"
Area: 71 sq. ft
Counted as living area: Yes

Heated: Yes
Finished: Yes
Enclosed: Yes
Contiguous: Yes
Permitted: Yes
Wet space: No
Addition: No
Conversion: No

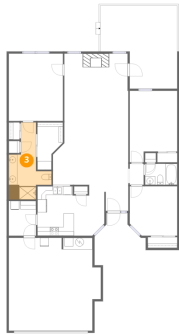
2 Floor 1 - W.I.C.



Dimensions: 5'11" x 11'0"
Area: 52 sq. ft
Counted as living area: Yes

Heated: Yes
Finished: Yes
Enclosed: Yes
Contiguous: Yes
Permitted: Yes
Wet space: No
Addition: No
Conversion: No

3 Floor 1 - Bath



Dimensions: 9'11" x 17'11"
Area: 104 sq. ft
Counted as living area: Yes

Heated: Yes
Finished: Yes
Enclosed: Yes
Contiguous: Yes
Permitted: Yes
Wet space: Yes
Addition: No
Conversion: No

4 Floor 1 - Kitchen



Dimensions: 8'6" x 11'6"
Area: 98 sq. ft
Counted as living area: Yes

Heated: Yes
Finished: Yes
Enclosed: Yes
Contiguous: Yes
Permitted: Yes
Wet space: No
Addition: No
Conversion: No

5 Floor 1 - Porch



Dimensions: 10'7" x 5'9"
Area: 38 sq. ft
Counted as living area: No

Heated: No
Finished: No
Enclosed: No
Contiguous: Yes
Permitted: Yes
Wet space: No
Addition: No
Conversion: No

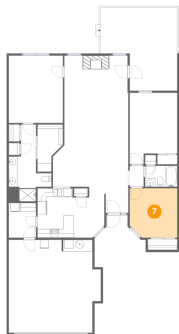
6 Floor 1 - Bath



Dimensions: 7'6" x 4'11"
Area: 37 sq. ft
Counted as living area: Yes

Heated: Yes
Finished: Yes
Enclosed: Yes
Contiguous: Yes
Permitted: Yes
Wet space: Yes
Addition: No
Conversion: No

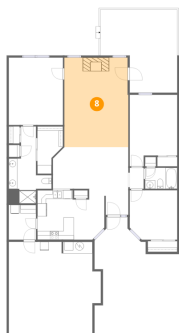
7 Floor 1 - Bedroom



Dimensions: 11'1" x 11'6"
Area: 123 sq. ft
Counted as living area: Yes

Heated: Yes
Finished: Yes
Enclosed: Yes
Contiguous: Yes
Permitted: Yes
Wet space: No
Addition: No
Conversion: No

8 Floor 1 - Living Room



Dimensions: 14'11" x 20'10"
Area: 309 sq. ft
Counted as living area: Yes

Heated: Yes
Finished: Yes
Enclosed: Yes
Contiguous: Yes
Permitted: Yes
Wet space: No
Addition: No
Conversion: No

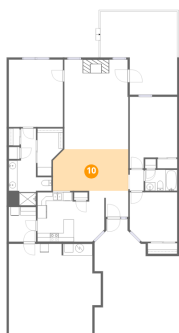
9 Floor 1 - Laundry



Dimensions: 6'4" x 8'1"
Area: 51 sq. ft
Counted as living area: Yes

Heated: Yes
Finished: Yes
Enclosed: Yes
Contiguous: Yes
Permitted: Yes
Wet space: No
Addition: No
Conversion: No

10 Floor 1 - Dining Area



Dimensions: 17'7" x 9'8"
Area: 166 sq. ft
Counted as living area: Yes

Heated: Yes
Finished: Yes
Enclosed: Yes
Contiguous: Yes
Permitted: Yes
Wet space: No
Addition: No
Conversion: No

11 Floor 1 - Garage



Dimensions: 21'5" x 21'7"
Area: 434 sq. ft
Counted as living area: No

Heated: No
Finished: No
Enclosed: Yes
Contiguous: Yes
Permitted: Yes
Wet space: No
Addition: No
Conversion: No

12 Floor 1 - Hall



Dimensions: 3'3" x 4'11"
Area: 16 sq. ft
Counted as living area: Yes

Heated: Yes
Finished: Yes
Enclosed: Yes
Contiguous: Yes
Permitted: Yes
Wet space: No
Addition: No
Conversion: No

13 Floor 1 - Foyer



Dimensions: 5'7" x 6'1"
Area: 32 sq. ft
Counted as living area: Yes

Heated: Yes
Finished: Yes
Enclosed: Yes
Contiguous: Yes
Permitted: Yes
Wet space: No
Addition: No
Conversion: No

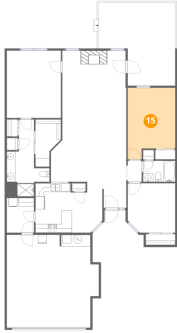
14 Floor 1 - Deck



Dimensions: 17'11" x 19'3"
Area: 287 sq. ft
Counted as living area: No

Heated: No
Finished: No
Enclosed: No
Contiguous: Yes
Permitted: Yes
Wet space: No
Addition: No
Conversion: No

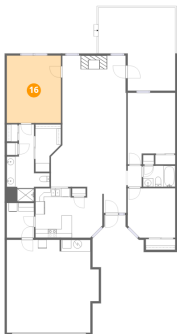
15 Floor 1 - Bedroom



Dimensions: 11'1" x 16'8"
Area: 164 sq. ft
Counted as living area: Yes

Heated: Yes
Finished: Yes
Enclosed: Yes
Contiguous: Yes
Permitted: Yes
Wet space: No
Addition: No
Conversion: No

16 Floor 1 - Primary Bedroom



Dimensions: 12'7" x 15'8"
Area: 197 sq. ft
Counted as living area: Yes

Heated: Yes
Finished: Yes
Enclosed: Yes
Contiguous: Yes
Permitted: Yes
Wet space: No
Addition: No
Conversion: No