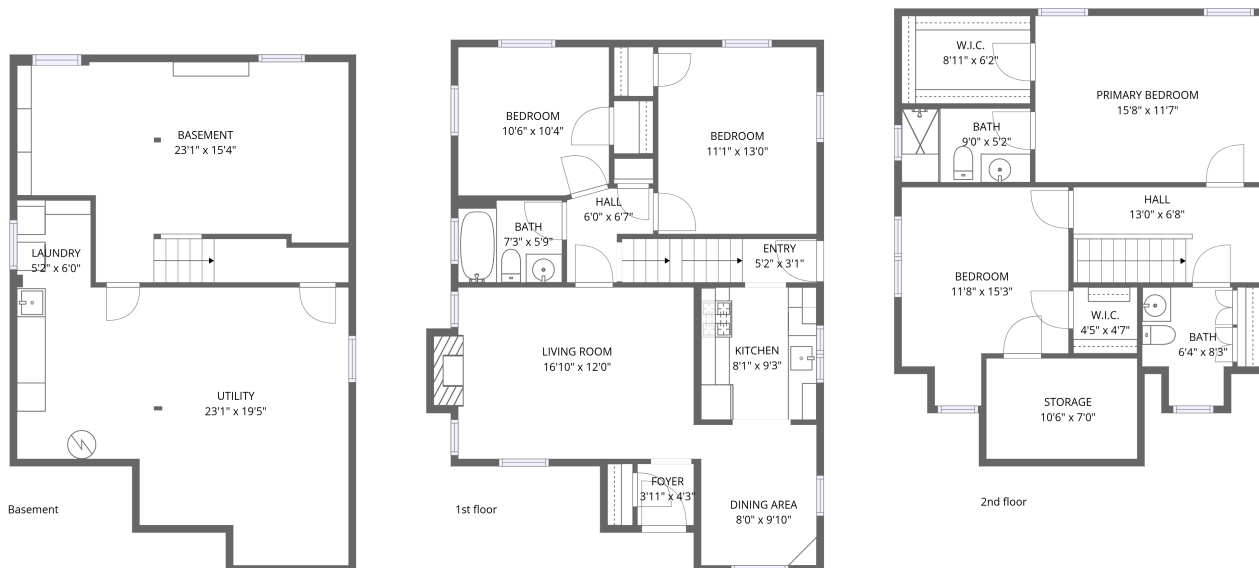


Home data report

68 Broadway, Malverne, Nassau County, New York, United States, 11565



Total Area: 1614 sq. ft

Basement: 331 sq. ft, 1st Floor: 810 sq. ft, 2nd Floor: 473 sq. ft

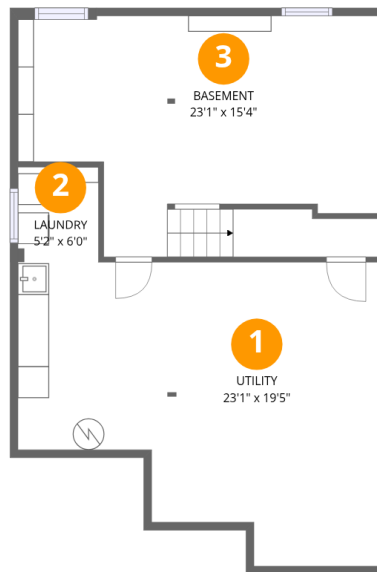
Excluded: Utility 367 sq. ft, Laundry 31 sq. ft, Fireplace 10 sq. ft, Low ceiling 226 sq. ft, Walls: 180 sq. ft

Property summary



Home data report

68 Broadway, Malverne, Nassau County, New York, United States, 11565



Room dimensions

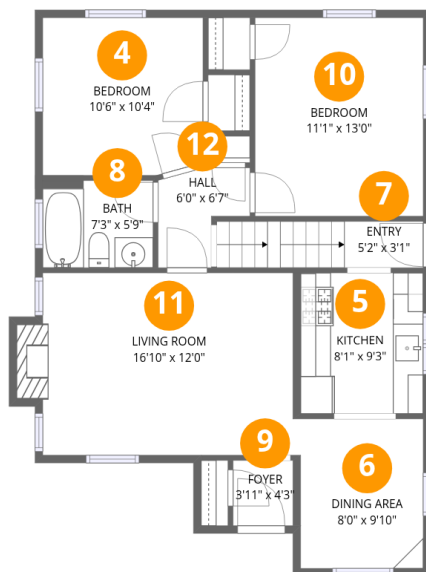
Floor 1 Below grade

Total:331sqft

Excluded: 398sqft

#		Dimensions	sqft	Counted as living area
1	Utility	23'1" x 19'5"	367 sq. ft	No
2	Laundry	5'2" x 6'0"	31 sq. ft	No
3	Basement	23'1" x 15'4"	317 sq. ft	Yes

68 Broadway, Malverne, Nassau County, New York, United States, 11565



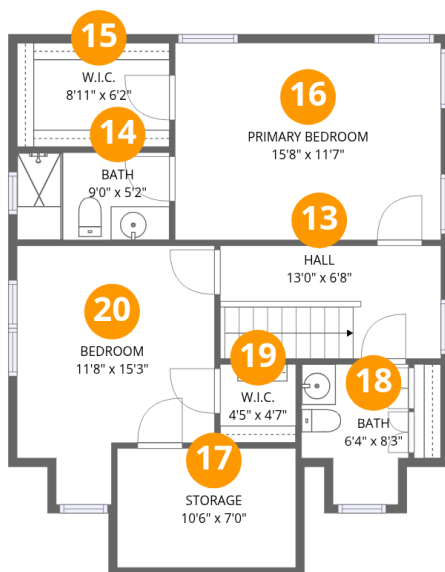
Room dimensions

Floor 2

Total:810sqft Excluded: 10sqft

#		Dimensions	sqft	Counted as living area
4	Bedroom	10'6" x 10'4"	108 sq. ft	Yes
5	Kitchen	8'1" x 9'3"	74 sq. ft	Yes
6	Dining Area	8'0" x 9'10"	79 sq. ft	Yes
7	Entry	5'2" x 3'1"	41 sq. ft	Yes
8	Bath	7'3" x 5'9"	41 sq. ft	Yes
9	Foyer	3'11" x 4'3"	17 sq. ft	Yes
10	Bedroom	11'1" x 13'0"	144 sq. ft	Yes
11	Living Room	16'10" x 12'0"	206 sq. ft	Yes
12	Hall	6'0" x 6'7"	30 sq. ft	Yes

68 Broadway, Malverne, Nassau County, New York, United States, 11565



Room dimensions

Floor 3

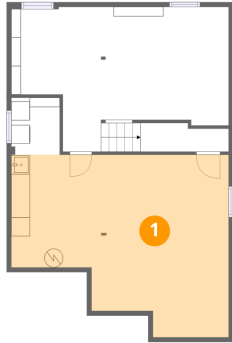
Total:473sqft

Excluded: 226sqft

#		Dimensions	sqft	Counted as living area
13	Hall	13'0" x 6'8"	87 sq. ft	Yes
14	Bath	9'0" x 5'2"	46 sq. ft	Yes
15	W.I.C.	8'11" x 6'2"	55 sq. ft	Yes
16	Primary Bedroom	15'8" x 11'7"	182 sq. ft	Yes
17	Storage	10'6" x 7'0"	74 sq. ft	No
18	Bath	6'4" x 8'3"	45 sq. ft	Yes
19	W.I.C.	4'5" x 4'7"	21 sq. ft	Yes
20	Bedroom	11'8" x 15'3"	149 sq. ft	No

68 Broadway, Malverne, Nassau County, New York, United States, 11565

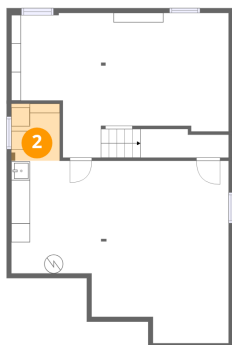
1 Floor 1 - Utility



Dimensions: 23'1" x 19'5"
Area: 367 sq. ft
Counted as living area: No

Heated: Yes
Finished: No
Enclosed: Yes
Contiguous: Yes
Permitted: Yes
Wet space: No
Addition: No
Conversion: No

2 Floor 1 - Laundry

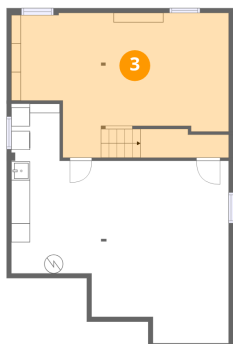


Dimensions: 5'2" x 6'0"
Area: 31 sq. ft
Counted as living area: No

Heated: Yes
Finished: No
Enclosed: Yes
Contiguous: Yes
Permitted: Yes
Wet space: No
Addition: No
Conversion: No

68 Broadway, Malverne, Nassau County, New York, United States, 11565

3 Floor 1 - Basement



Dimensions: 23'1" x 15'4"
Area: 317 sq. ft
Counted as living area: Yes

Heated: Yes
Finished: Yes
Enclosed: Yes
Contiguous: Yes
Permitted: Yes
Wet space: No
Addition: No
Conversion: No

4 Floor 2 - Bedroom



Dimensions: 10'6" x 10'4"
Area: 108 sq. ft
Counted as living area: Yes

Heated: Yes
Finished: Yes
Enclosed: Yes
Contiguous: Yes
Permitted: Yes
Wet space: No
Addition: No
Conversion: No

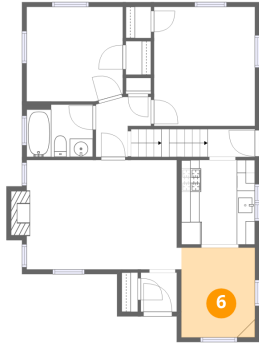
5 Floor 2 - Kitchen



Dimensions: 8'1" x 9'3"
Area: 74 sq. ft
Counted as living area: Yes

Heated: Yes
Finished: Yes
Enclosed: Yes
Contiguous: Yes
Permitted: Yes
Wet space: No
Addition: No
Conversion: No

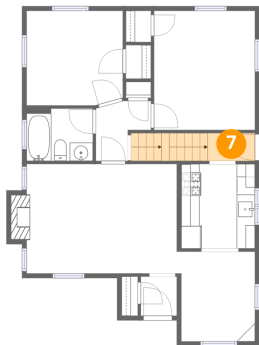
6 Floor 2 - Dining Area



Dimensions: 8'0" x 9'10"
Area: 79 sq. ft
Counted as living area: Yes

Heated: Yes
Finished: Yes
Enclosed: Yes
Contiguous: Yes
Permitted: Yes
Wet space: No
Addition: No
Conversion: No

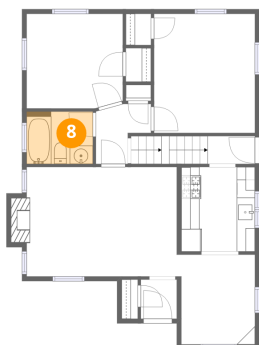
7 Floor 2 - Entry



Dimensions: 5'2" x 3'1"
Area: 41 sq. ft
Counted as living area: Yes

Heated: Yes
Finished: Yes
Enclosed: Yes
Contiguous: Yes
Permitted: Yes
Wet space: No
Addition: No
Conversion: No

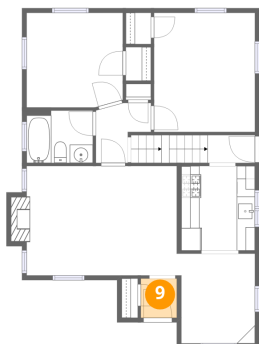
8 Floor 2 - Bath



Dimensions: 7'3" x 5'9"
Area: 41 sq. ft
Counted as living area: Yes

Heated: Yes
Finished: Yes
Enclosed: Yes
Contiguous: Yes
Permitted: Yes
Wet space: Yes
Addition: No
Conversion: No

9 Floor 2 - Foyer



Dimensions: 3'11" x 4'3"
Area: 17 sq. ft
Counted as living area: Yes

Heated: Yes
Finished: Yes
Enclosed: Yes
Contiguous: Yes
Permitted: Yes
Wet space: No
Addition: No
Conversion: No

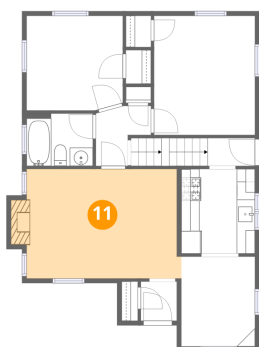
10 Floor 2 - Bedroom



Dimensions: 11'1" x 13'0"
Area: 144 sq. ft
Counted as living area: Yes

Heated: Yes
Finished: Yes
Enclosed: Yes
Contiguous: Yes
Permitted: Yes
Wet space: No
Addition: No
Conversion: No

11 Floor 2 - Living Room



Dimensions: 16'10" x 12'0"
Area: 206 sq. ft
Counted as living area: Yes

Heated: Yes
Finished: Yes
Enclosed: Yes
Contiguous: Yes
Permitted: Yes
Wet space: No
Addition: No
Conversion: No

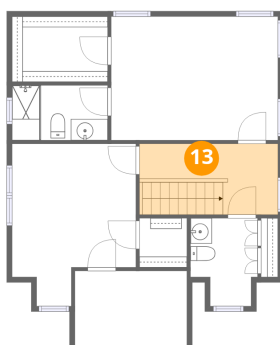
12 Floor 2 - Hall



Dimensions: 6'0" x 6'7"
Area: 30 sq. ft
Counted as living area: Yes

Heated: Yes
Finished: Yes
Enclosed: Yes
Contiguous: Yes
Permitted: Yes
Wet space: No
Addition: No
Conversion: No

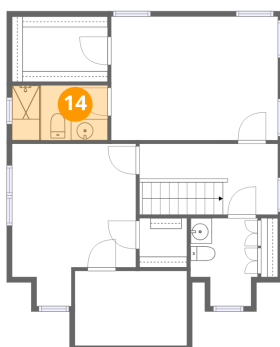
13 Floor 3 - Hall



Dimensions: 13'0" x 6'8"
Area: 87 sq. ft
Counted as living area: Yes

Heated: Yes
Finished: Yes
Enclosed: Yes
Contiguous: Yes
Permitted: Yes
Wet space: No
Addition: No
Conversion: No

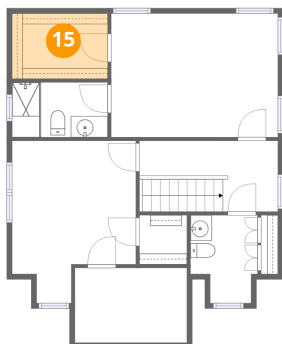
14 Floor 3 - Bath



Dimensions: 9'0" x 5'2"
Area: 46 sq. ft
Counted as living area: Yes

Heated: Yes
Finished: Yes
Enclosed: Yes
Contiguous: Yes
Permitted: Yes
Wet space: Yes
Addition: No
Conversion: No

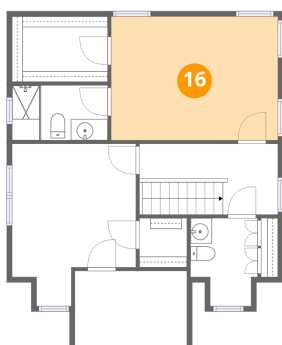
15 Floor 3 - W.I.C.



Dimensions: 8'11" x 6'2"
Area: 55 sq. ft
Counted as living area: Yes

Heated: Yes
Finished: Yes
Enclosed: Yes
Contiguous: Yes
Permitted: Yes
Wet space: No
Addition: No
Conversion: No

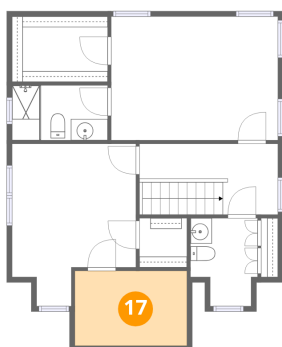
16 Floor 3 - Primary Bedroom



Dimensions: 15'8" x 11'7"
Area: 182 sq. ft
Counted as living area: Yes

Heated: Yes
Finished: Yes
Enclosed: Yes
Contiguous: Yes
Permitted: Yes
Wet space: No
Addition: No
Conversion: No

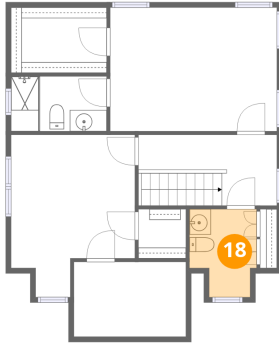
17 Floor 3 - Storage



Dimensions: 10'6" x 7'0"
Area: 74 sq. ft
Counted as living area: No

Heated: No
Finished: No
Enclosed: No
Contiguous: No
Permitted: Yes
Wet space: No
Addition: No
Conversion: No

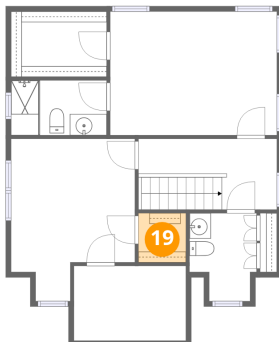
18 Floor 3 - Bath



Dimensions: 6'4" x 8'3"
Area: 45 sq. ft
Counted as living area: Yes

Heated: Yes
Finished: Yes
Enclosed: Yes
Contiguous: Yes
Permitted: Yes
Wet space: No
Addition: No
Conversion: No

19 Floor 3 - W.I.C.



Dimensions: 4'5" x 4'7"
Area: 21 sq. ft
Counted as living area: Yes

Heated: Yes
Finished: Yes
Enclosed: Yes
Contiguous: Yes
Permitted: Yes
Wet space: No
Addition: No
Conversion: No

20 Floor 3 - Bedroom



Dimensions: 11'8" x 15'3"
Area: 149 sq. ft
Counted as living area: No

Heated: Yes
Finished: Yes
Enclosed: Yes
Contiguous: Yes
Permitted: Yes
Wet space: No
Addition: No
Conversion: No