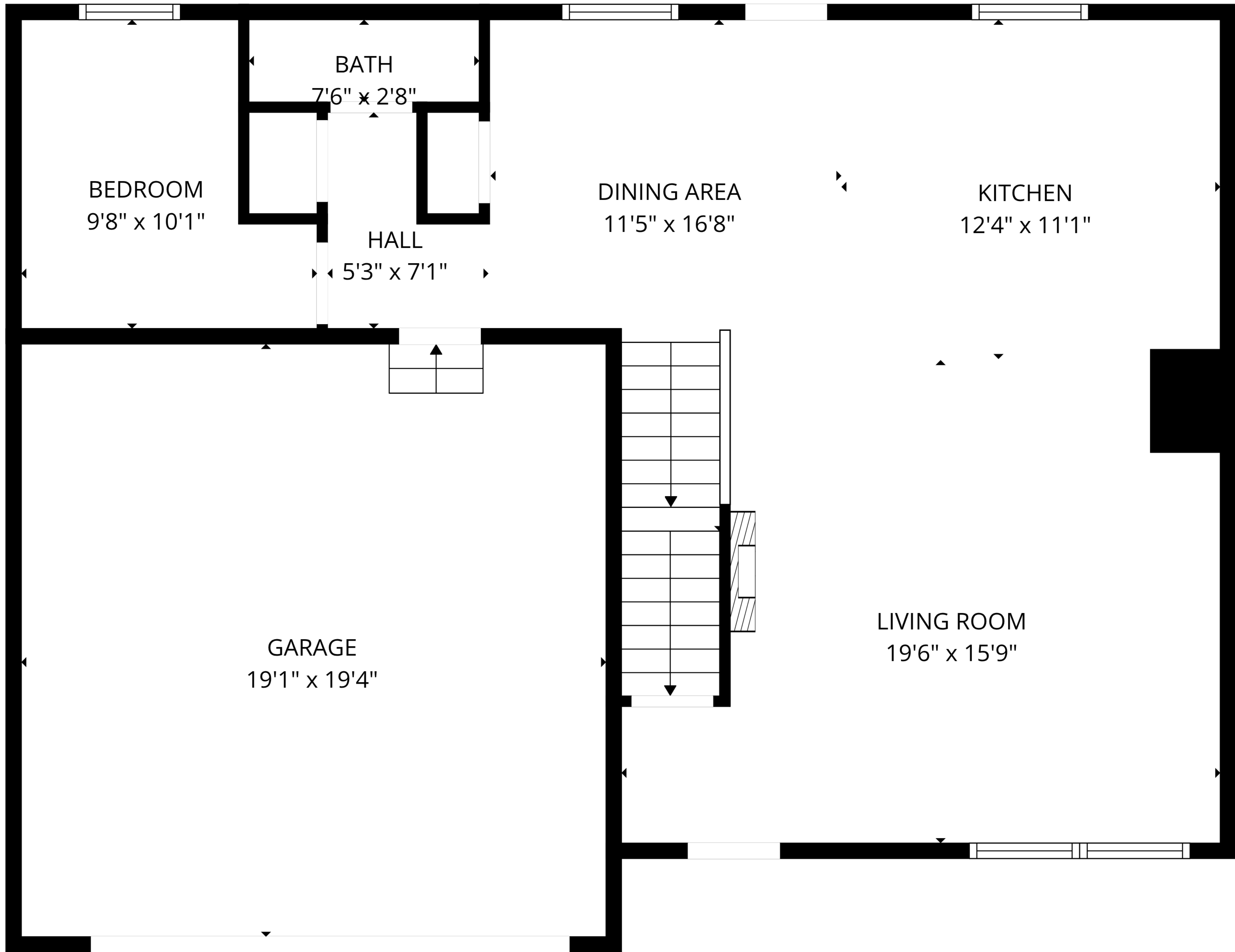


BASEMENT  
39'1" x 20'11"

STORAGE  
10'7" x 5'7"

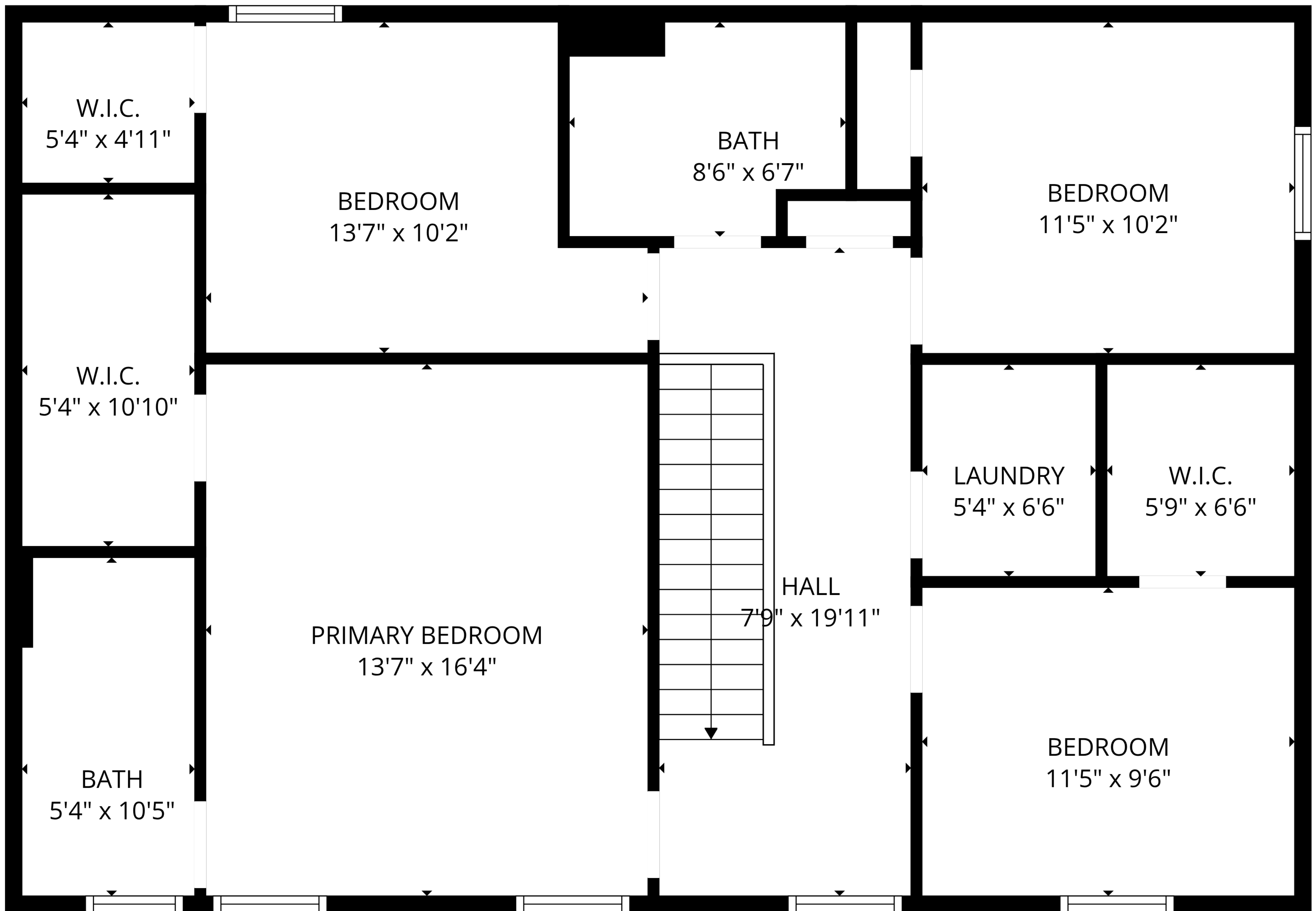
**TOTAL: 1841 sq. ft**

Basement 1: 73 sq. ft, 1st floor: 720 sq. ft, 2nd floor: 1048 sq. ft  
EXCLUDED AREAS: STORAGE: 63 sq. ft, UNDEFINED: 68 sq. ft, BASEMENT: 515 sq. ft,  
GARAGE: 368 sq. ft, WALLS: 223 sq. ft



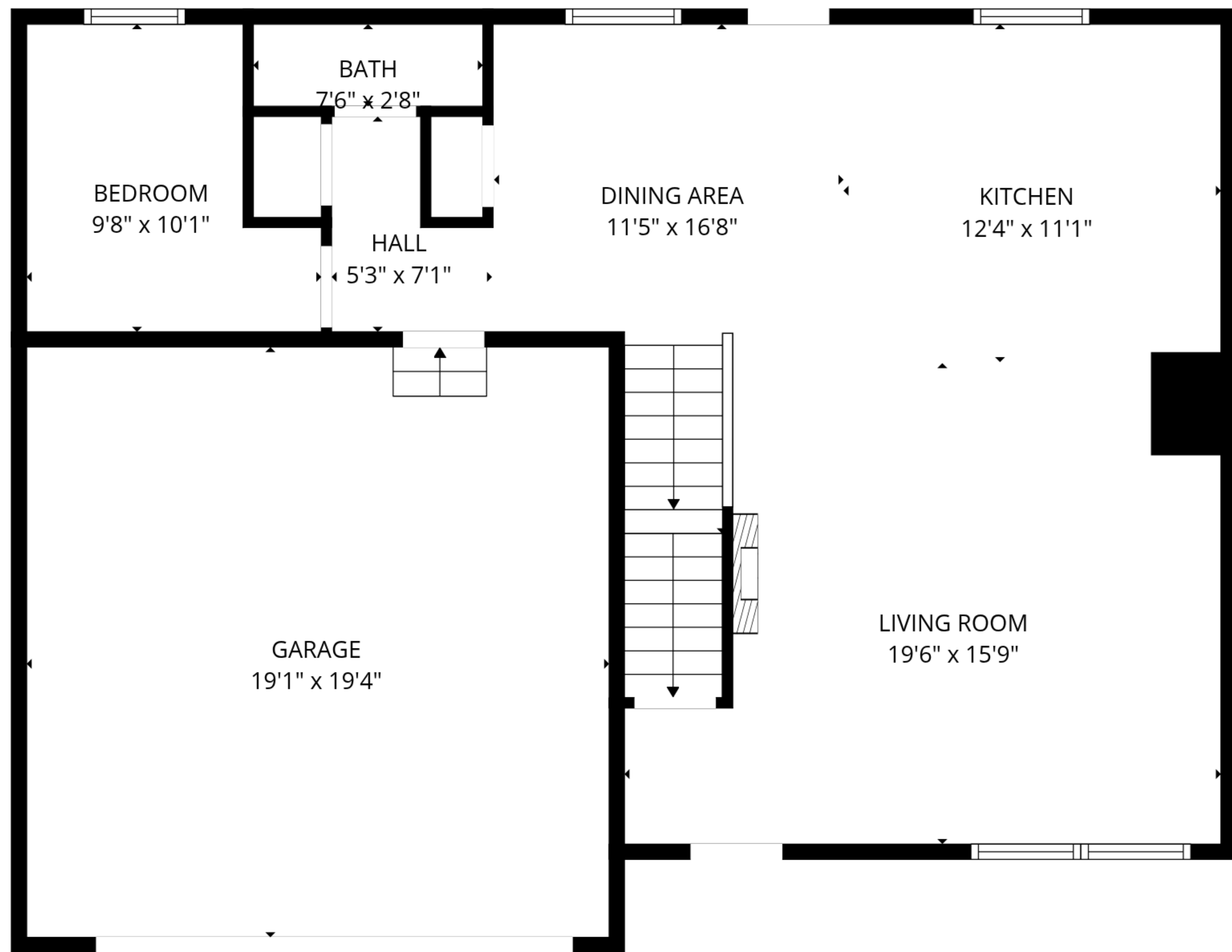
**TOTAL: 1841 sq. ft**

Basement 1: 73 sq. ft, 1st floor: 720 sq. ft, 2nd floor: 1048 sq. ft  
EXCLUDED AREAS: STORAGE: 63 sq. ft, UNDEFINED: 68 sq. ft, BASEMENT: 515 sq. ft,  
GARAGE: 368 sq. ft, WALLS: 223 sq. ft

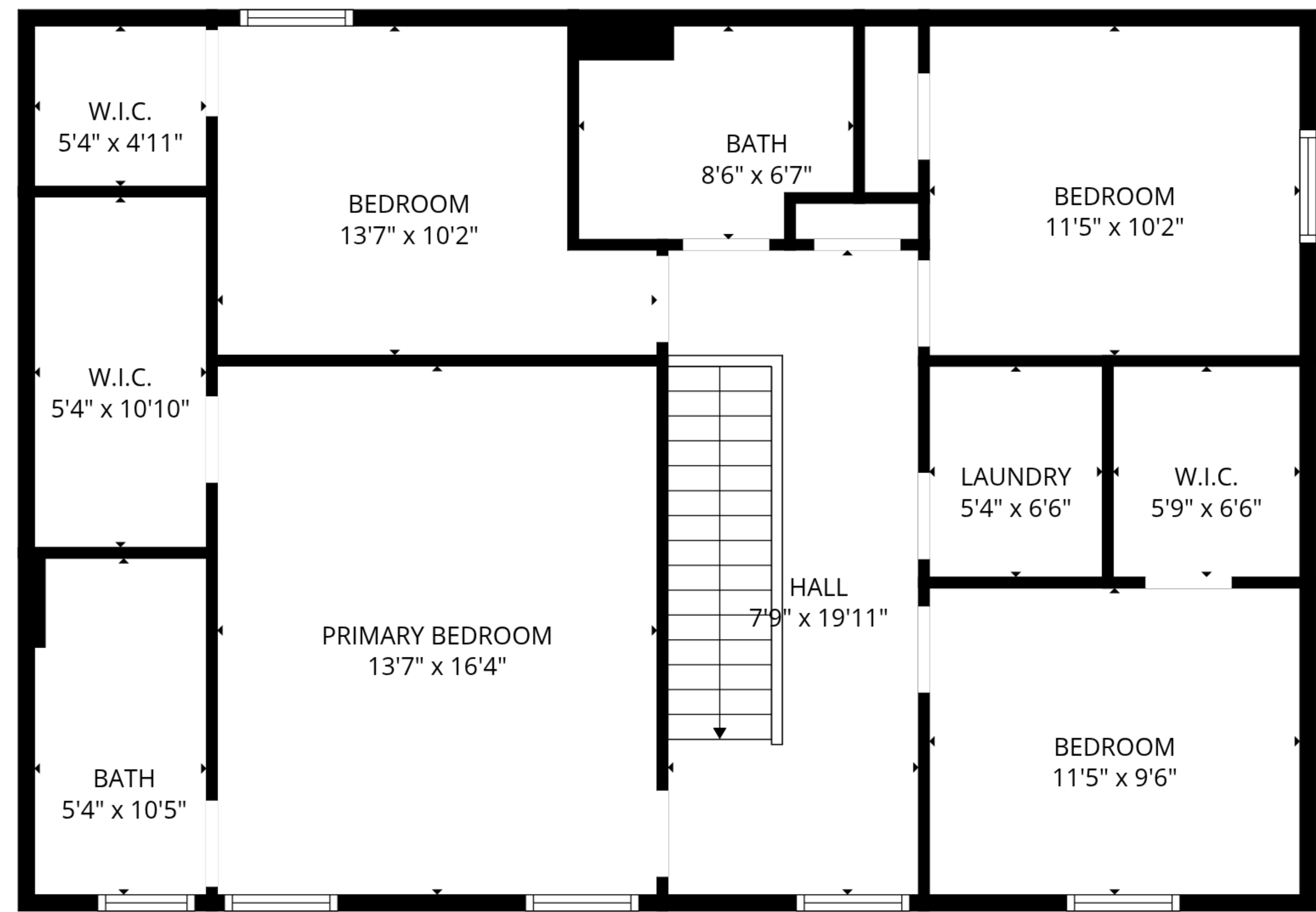


**TOTAL: 1841 sq. ft**

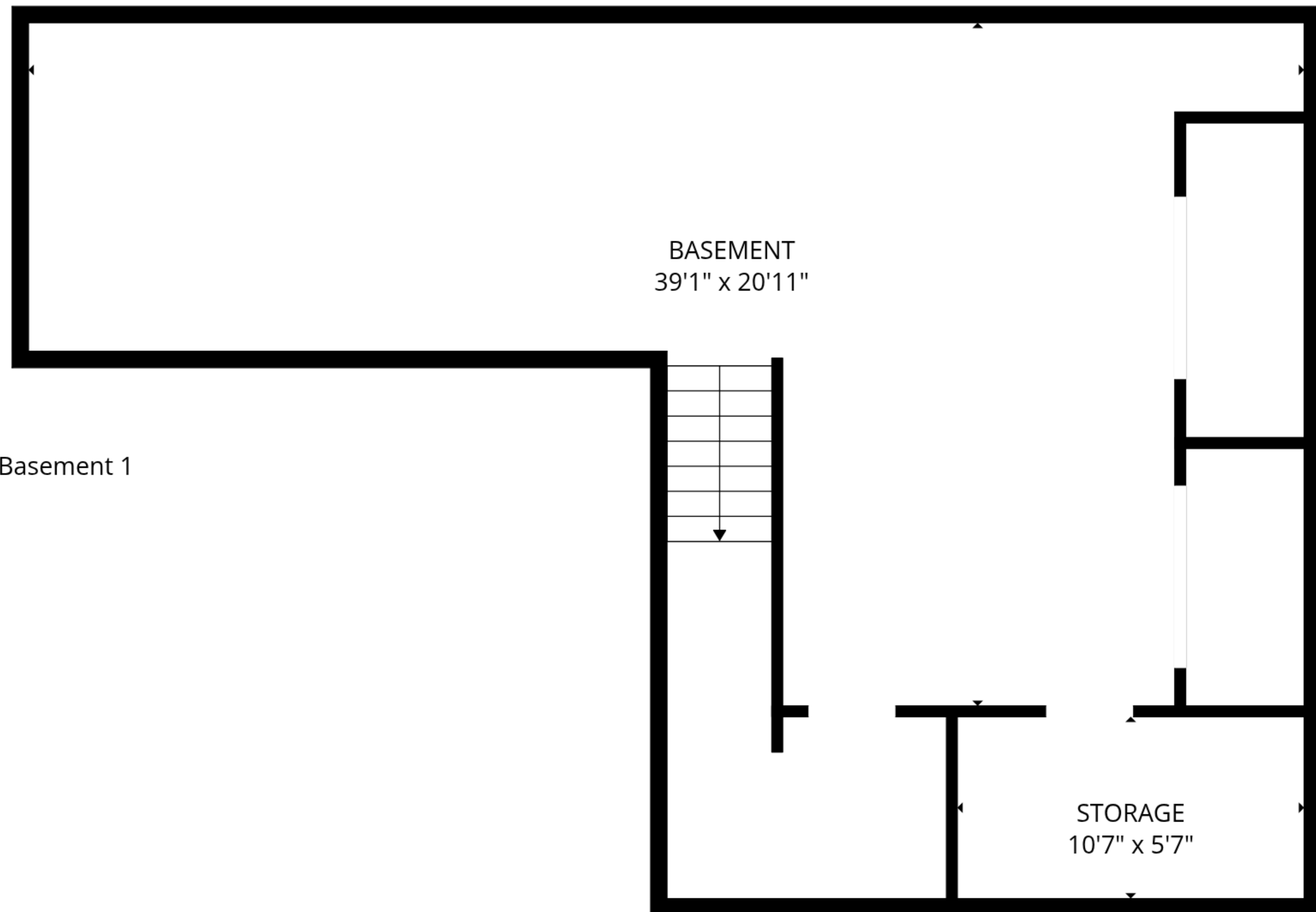
Basement 1: 73 sq. ft, 1st floor: 720 sq. ft, 2nd floor: 1048 sq. ft  
 EXCLUDED AREAS: STORAGE: 63 sq. ft, UNDEFINED: 68 sq. ft, BASEMENT: 515 sq. ft,  
 GARAGE: 368 sq. ft, WALLS: 223 sq. ft



1st floor



2nd floor



Basement 1

**TOTAL: 1841 sq. ft**  
 Basement 1: 73 sq. ft, 1st floor: 720 sq. ft, 2nd floor: 1048 sq. ft  
 EXCLUDED AREAS: STORAGE: 63 sq. ft, UNDEFINED: 68 sq. ft, BASEMENT: 515 sq. ft,  
 GARAGE: 368 sq. ft, WALLS: 223 sq. ft