

# Home data report

## 1238 Thamesridge Cres, London, Ontario N6K 4Z6, Canada



**Total Area: 2306 sq. ft**

Basement: 984 sq. ft, 1st Floor: 1242 sq. ft, 2nd Floor: 1064 sq. ft

Excluded: Utility 212 sq. ft, Storage 113 sq. ft, Garage 432 sq. ft, Deck 97 sq. ft, Fireplace 14 sq. ft

### Property summary

 **3** Floors

 **5** Bedrooms

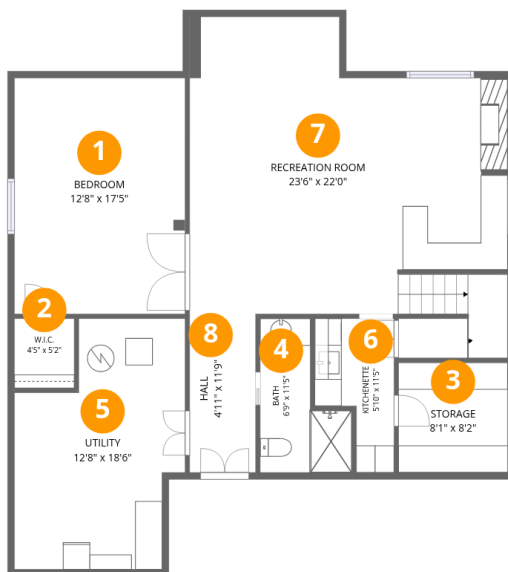
 **3** Bathrooms

Home data report

**1238 Thamesridge Cres, London, Ontario N6K 4Z6, Canada**

 **1**  
Half baths

 **1**  
Garages



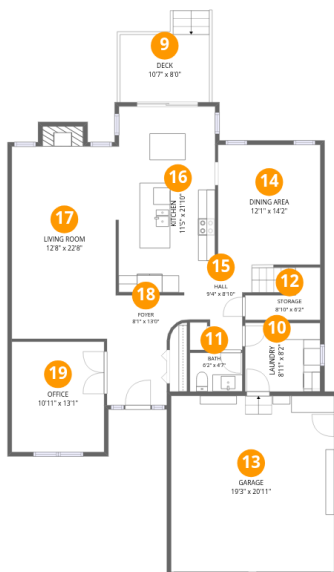
## Room dimensions

Floor 1 Below grade

Total:984sqft

Excluded: 286sqft

#		Dimensions	sqft	Counted as living area
1	Bedroom	12'8" x 17'5"	220 sq. ft	Yes
2	W.I.C.	4'5" x 5'2"	23 sq. ft	Yes
3	Storage	8'1" x 8'2"	66 sq. ft	No
4	Bath	6'9" x 11'5"	56 sq. ft	Yes
5	Utility	12'8" x 18'6"	196 sq. ft	No
6	Kitchenette	5'10" x 11'5"	52 sq. ft	Yes
7	Recreation Room	23'6" x 22'0"	467 sq. ft	Yes
8	Hall	4'11" x 11'9"	57 sq. ft	Yes

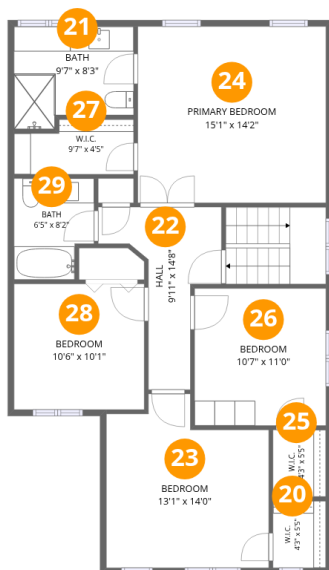


## Room dimensions

Floor 2

Total:1242sqft Excluded: 582sqft

#		Dimensions	sqft	Counted as living area
9	Deck	10'7" x 8'0"	97 sq. ft	No
10	Laundry	8'11" x 8'2"	72 sq. ft	Yes
11	Bath	6'2" x 4'7"	28 sq. ft	Yes
12	Storage	8'10" x 6'2"	35 sq. ft	No
13	Garage	19'3" x 20'11"	401 sq. ft	No
14	Dining Area	12'1" x 14'2"	171 sq. ft	Yes
15	Hall	9'4" x 8'10"	73 sq. ft	Yes
16	Kitchen	11'5" x 21'10"	244 sq. ft	Yes
17	Living Room	12'8" x 22'8"	294 sq. ft	Yes
18	Foyer	8'1" x 13'0"	94 sq. ft	Yes
19	Office	10'11" x 13'1"	142 sq. ft	Yes



## Room dimensions

Floor 3

Total:1064sqft Excluded: 0sqft

#		Dimensions	sqft	Counted as living area
20	W.I.C.	4'3" x 5'5"	23 sq. ft	Yes
21	Bath	9'7" x 8'3"	72 sq. ft	Yes
22	Hall	9'11" x 14'8"	78 sq. ft	Yes
23	Bedroom	13'1" x 14'0"	159 sq. ft	Yes
24	Primary Bedroom	15'1" x 14'2"	214 sq. ft	Yes
25	W.I.C.	4'3" x 5'5"	23 sq. ft	Yes
26	Bedroom	10'7" x 11'0"	116 sq. ft	Yes
27	W.I.C.	9'7" x 4'5"	38 sq. ft	Yes
28	Bedroom	10'6" x 10'1"	106 sq. ft	Yes
29	Bath	6'5" x 8'2"	48 sq. ft	Yes

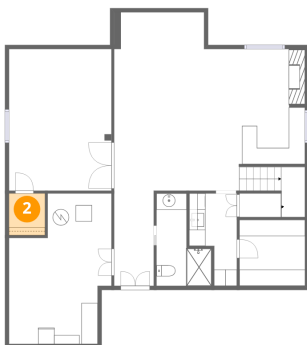
## 1 Floor 1 - Bedroom



Dimensions: 12'8" x 17'5"  
Area: 220 sq. ft  
Counted as living area: Yes

Heated: Yes  
Finished: Yes  
Enclosed: Yes  
Contiguous: Yes  
Permitted: Yes  
Wet space: No  
Addition: No  
Conversion: No

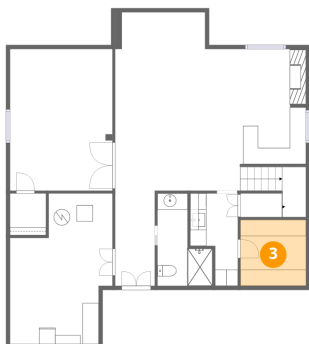
## 2 Floor 1 - W.I.C.



Dimensions: 4'5" x 5'2"  
Area: 23 sq. ft  
Counted as living area: Yes

Heated: Yes  
Finished: Yes  
Enclosed: Yes  
Contiguous: Yes  
Permitted: Yes  
Wet space: No  
Addition: No  
Conversion: No

### 3 Floor 1 - Storage



Dimensions: 8'1" x 8'2"  
Area: 66 sq. ft  
Counted as living area: No

Heated: No  
Finished: No  
Enclosed: No  
Contiguous: No  
Permitted: Yes  
Wet space: No  
Addition: No  
Conversion: No

### 4 Floor 1 - Bath



Dimensions: 6'9" x 11'5"  
Area: 56 sq. ft  
Counted as living area: Yes

Heated: Yes  
Finished: Yes  
Enclosed: Yes  
Contiguous: Yes  
Permitted: Yes  
Wet space: Yes  
Addition: No  
Conversion: No

### 5 Floor 1 - Utility



Dimensions: 12'8" x 18'6"  
Area: 196 sq. ft  
Counted as living area: No

Heated: Yes  
Finished: No  
Enclosed: Yes  
Contiguous: Yes  
Permitted: Yes  
Wet space: No  
Addition: No  
Conversion: No

### 6 Floor 1 - Kitchenette



Dimensions: 5'10" x 11'5"  
Area: 52 sq. ft  
Counted as living area: Yes

Heated: Yes  
Finished: Yes  
Enclosed: Yes  
Contiguous: Yes  
Permitted: Yes  
Wet space: No  
Addition: No  
Conversion: No

### 7 Floor 1 - Recreation Room



Dimensions: 23'6" x 22'0"  
Area: 467 sq. ft  
Counted as living area: Yes

Heated: Yes  
Finished: Yes  
Enclosed: Yes  
Contiguous: Yes  
Permitted: Yes  
Wet space: No  
Addition: No  
Conversion: No

### 8 Floor 1 - Hall



Dimensions: 4'11" x 11'9"  
Area: 57 sq. ft  
Counted as living area: Yes

Heated: Yes  
Finished: Yes  
Enclosed: Yes  
Contiguous: Yes  
Permitted: Yes  
Wet space: No  
Addition: No  
Conversion: No

### 9 Floor 2 - Deck



Dimensions: 10'7" x 8'0"  
Area: 97 sq. ft  
Counted as living area: No

Heated: No  
Finished: No  
Enclosed: No  
Contiguous: Yes  
Permitted: Yes  
Wet space: No  
Addition: No  
Conversion: No

### 10 Floor 2 - Laundry



Dimensions: 8'11" x 8'2"  
Area: 72 sq. ft  
Counted as living area: Yes

Heated: Yes  
Finished: Yes  
Enclosed: Yes  
Contiguous: Yes  
Permitted: Yes  
Wet space: No  
Addition: No  
Conversion: No

### 11 Floor 2 - Bath



Dimensions: 6'2" x 4'7"  
Area: 28 sq. ft  
Counted as living area: Yes

Heated: Yes  
Finished: Yes  
Enclosed: Yes  
Contiguous: Yes  
Permitted: Yes  
Wet space: Yes  
Addition: No  
Conversion: No

## 12 Floor 2 - Storage



Dimensions: 8'10" x 6'2"  
Area: 35 sq. ft  
Counted as living area: No

Heated: No  
Finished: No  
Enclosed: No  
Contiguous: Yes  
Permitted: Yes  
Wet space: No  
Addition: No  
Conversion: No

## 13 Floor 2 - Garage



Dimensions: 19'3" x 20'11"  
Area: 401 sq. ft  
Counted as living area: No

Heated: No  
Finished: No  
Enclosed: Yes  
Contiguous: Yes  
Permitted: Yes  
Wet space: No  
Addition: No  
Conversion: No

## 14 Floor 2 - Dining Area



Dimensions: 12'1" x 14'2"  
Area: 171 sq. ft  
Counted as living area: Yes

Heated: Yes  
Finished: Yes  
Enclosed: Yes  
Contiguous: Yes  
Permitted: Yes  
Wet space: No  
Addition: No  
Conversion: No

### 15 Floor 2 - Hall



Dimensions: 9'4" x 8'10"  
Area: 73 sq. ft  
Counted as living area: Yes

Heated: Yes  
Finished: Yes  
Enclosed: Yes  
Contiguous: Yes  
Permitted: Yes  
Wet space: No  
Addition: No  
Conversion: No

### 16 Floor 2 - Kitchen



Dimensions: 11'5" x 21'10"  
Area: 244 sq. ft  
Counted as living area: Yes

Heated: Yes  
Finished: Yes  
Enclosed: Yes  
Contiguous: Yes  
Permitted: Yes  
Wet space: No  
Addition: No  
Conversion: No

### 17 Floor 2 - Living Room



Dimensions: 12'8" x 22'8"  
Area: 294 sq. ft  
Counted as living area: Yes

Heated: Yes  
Finished: Yes  
Enclosed: Yes  
Contiguous: Yes  
Permitted: Yes  
Wet space: No  
Addition: No  
Conversion: No

### 18 Floor 2 - Foyer



Dimensions: 8'1" x 13'0"  
Area: 94 sq. ft  
Counted as living area: Yes

Heated: Yes  
Finished: Yes  
Enclosed: Yes  
Contiguous: Yes  
Permitted: Yes  
Wet space: No  
Addition: No  
Conversion: No

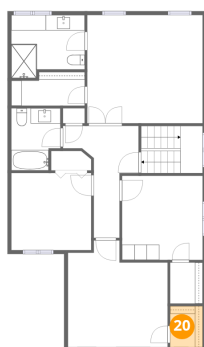
### 19 Floor 2 - Office



Dimensions: 10'11" x 13'1"  
Area: 142 sq. ft  
Counted as living area: Yes

Heated: Yes  
Finished: Yes  
Enclosed: Yes  
Contiguous: Yes  
Permitted: Yes  
Wet space: No  
Addition: No  
Conversion: No

### 20 Floor 3 - W.I.C.



Dimensions: 4'3" x 5'5"  
Area: 23 sq. ft  
Counted as living area: Yes

Heated: Yes  
Finished: Yes  
Enclosed: Yes  
Contiguous: Yes  
Permitted: Yes  
Wet space: No  
Addition: No  
Conversion: No

### 21 Floor 3 - Bath



Dimensions: 9'7" x 8'3"  
Area: 72 sq. ft  
Counted as living area: Yes

Heated: Yes  
Finished: Yes  
Enclosed: Yes  
Contiguous: Yes  
Permitted: Yes  
Wet space: Yes  
Addition: No  
Conversion: No

### 22 Floor 3 - Hall



Dimensions: 9'11" x 14'8"  
Area: 78 sq. ft  
Counted as living area: Yes

Heated: Yes  
Finished: Yes  
Enclosed: Yes  
Contiguous: Yes  
Permitted: Yes  
Wet space: No  
Addition: No  
Conversion: No

### 23 Floor 3 - Bedroom



Dimensions: 13'1" x 14'0"  
Area: 159 sq. ft  
Counted as living area: Yes

Heated: Yes  
Finished: Yes  
Enclosed: Yes  
Contiguous: Yes  
Permitted: Yes  
Wet space: No  
Addition: No  
Conversion: No

### 24 Floor 3 - Primary Bedroom



Dimensions: 15'1" x 14'2"  
Area: 214 sq. ft  
Counted as living area: Yes

Heated: Yes  
Finished: Yes  
Enclosed: Yes  
Contiguous: Yes  
Permitted: Yes  
Wet space: No  
Addition: No  
Conversion: No

### 25 Floor 3 - W.I.C.



Dimensions: 4'3" x 5'5"  
Area: 23 sq. ft  
Counted as living area: Yes

Heated: Yes  
Finished: Yes  
Enclosed: Yes  
Contiguous: Yes  
Permitted: Yes  
Wet space: No  
Addition: No  
Conversion: No

### 26 Floor 3 - Bedroom



Dimensions: 10'7" x 11'0"  
Area: 116 sq. ft  
Counted as living area: Yes

Heated: Yes  
Finished: Yes  
Enclosed: Yes  
Contiguous: Yes  
Permitted: Yes  
Wet space: No  
Addition: No  
Conversion: No

**27** Floor 3 - W.I.C.



Dimensions: 9'7" x 4'5"  
Area: 38 sq. ft  
Counted as living area: Yes

Heated: Yes  
Finished: Yes  
Enclosed: Yes  
Contiguous: Yes  
Permitted: Yes  
Wet space: No  
Addition: No  
Conversion: No

**28** Floor 3 - Bedroom



Dimensions: 10'6" x 10'1"  
Area: 106 sq. ft  
Counted as living area: Yes

Heated: Yes  
Finished: Yes  
Enclosed: Yes  
Contiguous: Yes  
Permitted: Yes  
Wet space: No  
Addition: No  
Conversion: No

**29** Floor 3 - Bath



Dimensions: 6'5" x 8'2"  
Area: 48 sq. ft  
Counted as living area: Yes

Heated: Yes  
Finished: Yes  
Enclosed: Yes  
Contiguous: Yes  
Permitted: Yes  
Wet space: Yes  
Addition: No  
Conversion: No