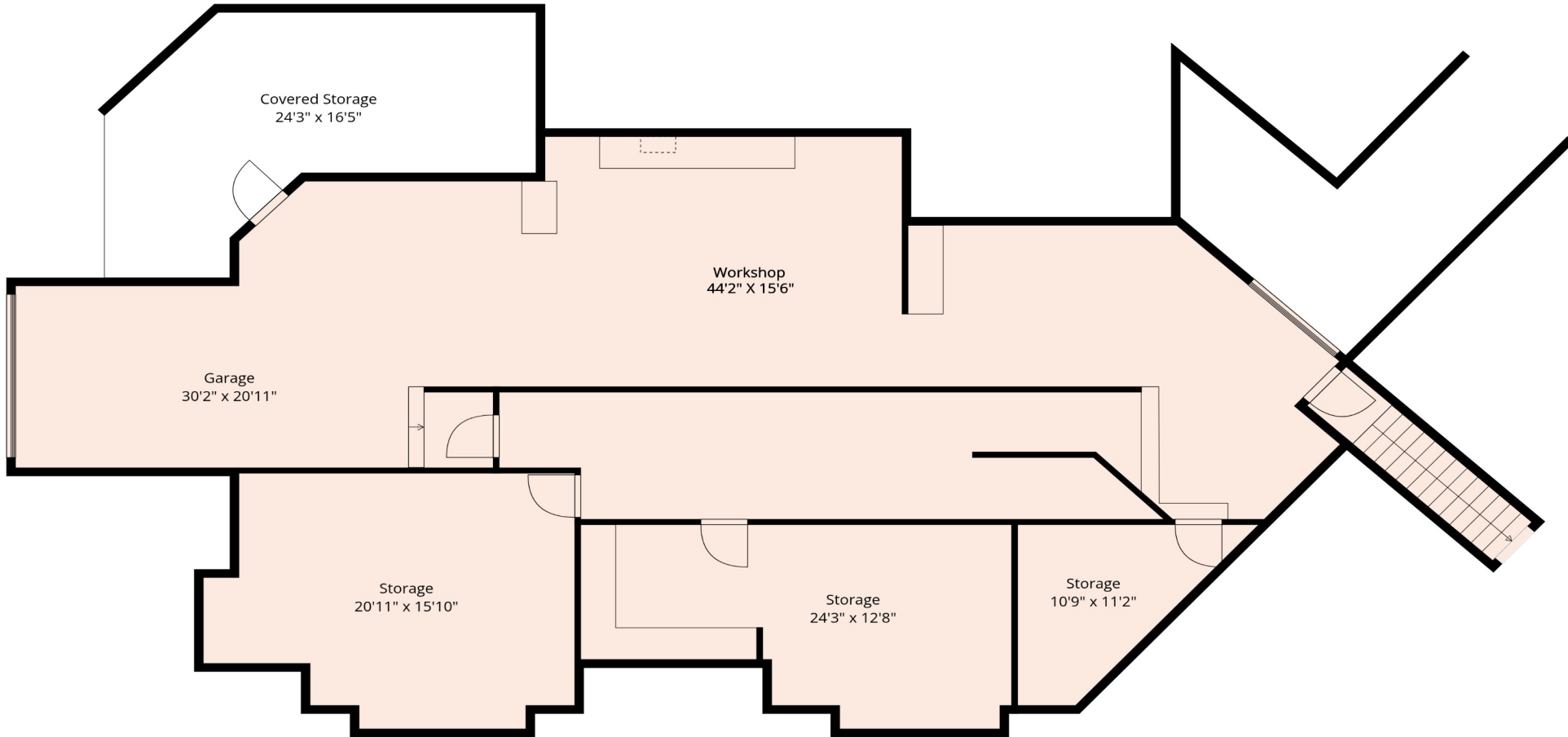


9441 HAYWARD ST



**Estimated Areas:**

Unfinished Below Main: 2427 sq. ft  
Main Floor: 2059 sq. ft  
Above Main: 2334 sq. ft  
Total Sq. Ft: 4393

\*\*\* E&O Insured. For advertising purposes only. Not intended for architectural or construction use. Floorplan and measurements are approximate within +/- 2% tolerance

9441 HAYWARD ST



**Estimated Areas:**  
Unfinished Below Main: 2427 sq. ft  
Main Floor: 2059 sq. ft  
Above Main: 2334 sq. ft  
Total Sq. Ft: 4393

\*\*\* E&O Insured. For advertising purposes only. Not intended for architectural or construction use. Floorplan and measurements are approximate within +/- 2% tolerance

9441 HAYWARD ST



**Estimated Areas:**

Unfinished Below Main: 2427 sq. ft

Main Floor: 2059 sq. ft

Above Main: 2334 sq. ft

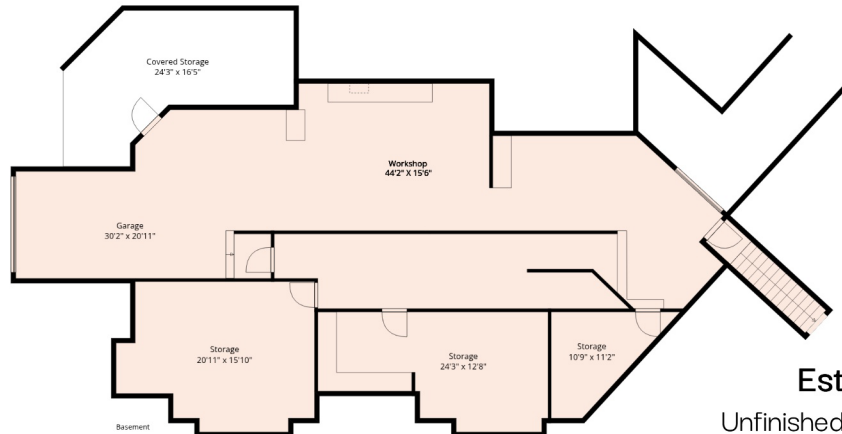
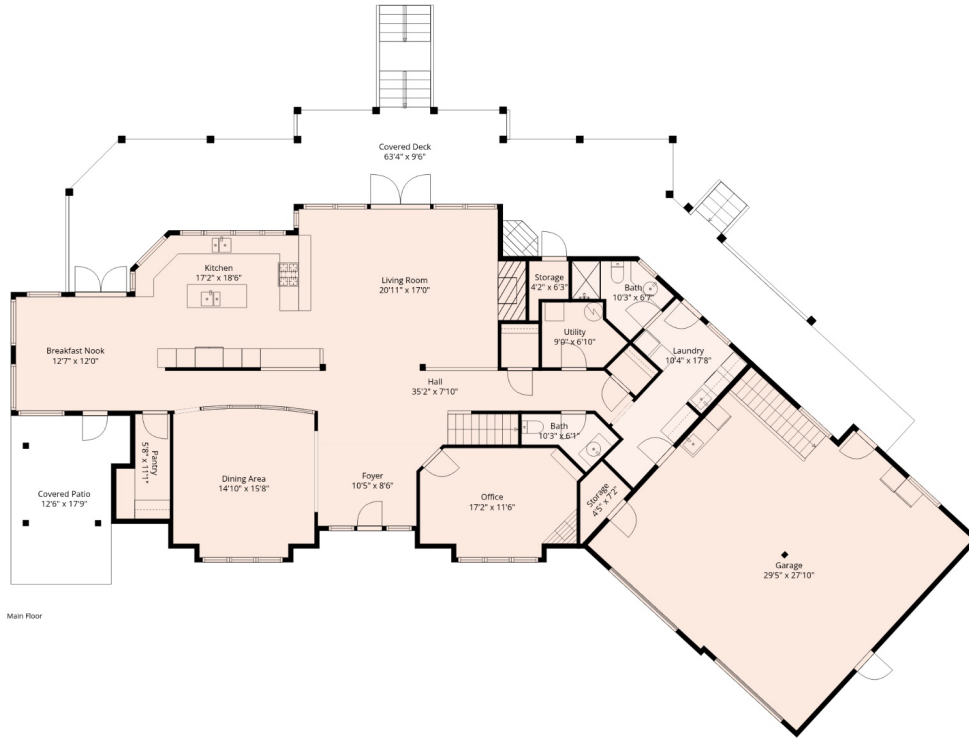
Total Sq. Ft: 4393

\*\*\* E&O Insured. For advertising purposes only. Not intended for architectural or construction use. Floorplan and measurements are approximate within +/- 2% tolerance

# 9441 HAYWARD ST



HARDYTEAM.CA | INFO@HARDYTEAM.CA



### Estimated Areas:

Unfinished Below Main: 2427 sq. ft

Main Floor: 2059 sq. ft

Above Main: 2334 sq. ft

Total Sq. Ft: 4393

\*\*\* E&O Insured. For advertising purposes only. Not intended for architectural or construction use. Floorplan and measurements are approximate within +/- 2% tolerance