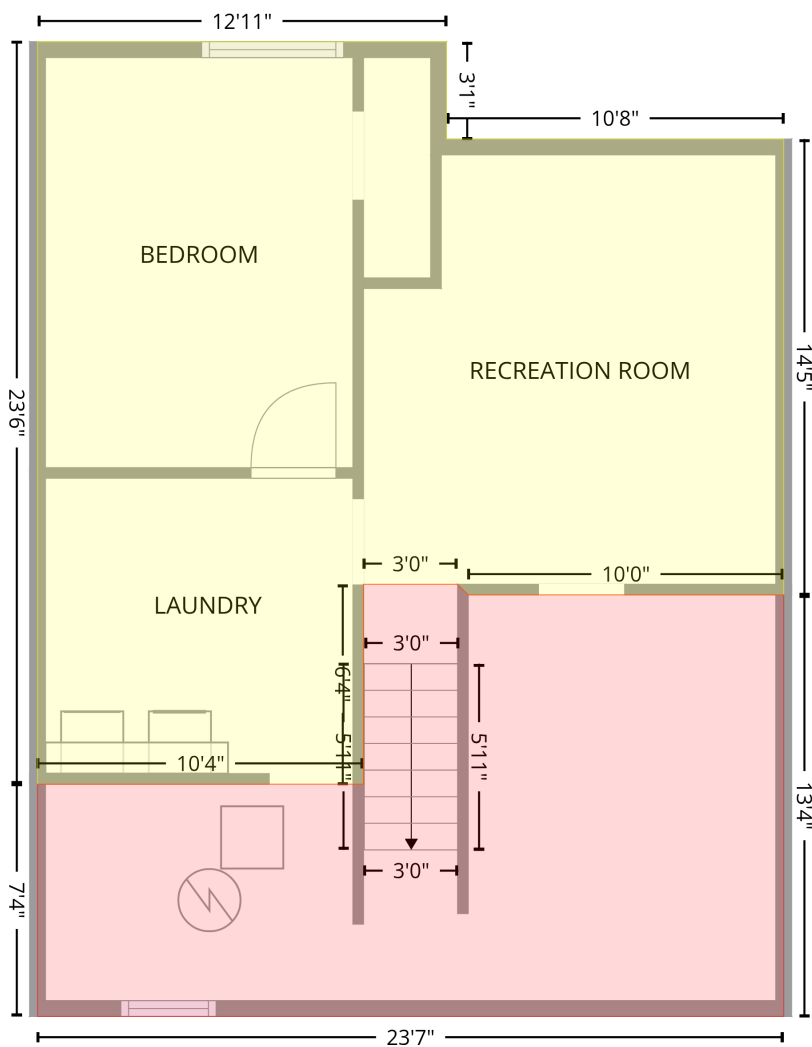


3162 29th Street, Boulder, Colorado 80301, United States

Gross Living Area: 1458 sq. ft

Level 1 - Below Grade

Basement
[AREA: 441]



STORAGE (1)
[AREA: 254]

Space	Area (sq. ft)	Calculation <small>Coordinate Polygon Area Algorithm using inches</small>
Basement (Living area)	441	$-\left((187.8 + 187.8) * (240 - 277) + (187.8 + 315.9) * (277 - 277) + (315.9 + 315.9) * (277 - 450.1) + (315.9 + 196.1) * (450.1 - 450.1) + (196.1 + 192.1) * (450.1 - 446.1) + (192.1 + 156.3) * (446.1 - 446.1) + (156.3 + 156.3) * (446.1 - 521.9) + (156.3 + 32.5) * (521.9 - 521.9) + (32.5 + 32.5) * (521.9 - 240) + (32.5 + 187.8) * (240 - 240)\right) * 0.5 * 0.00694$

3162 29th Street, Boulder, Colorado 80301, United States

Gross Living Area: 1458 sq. ft

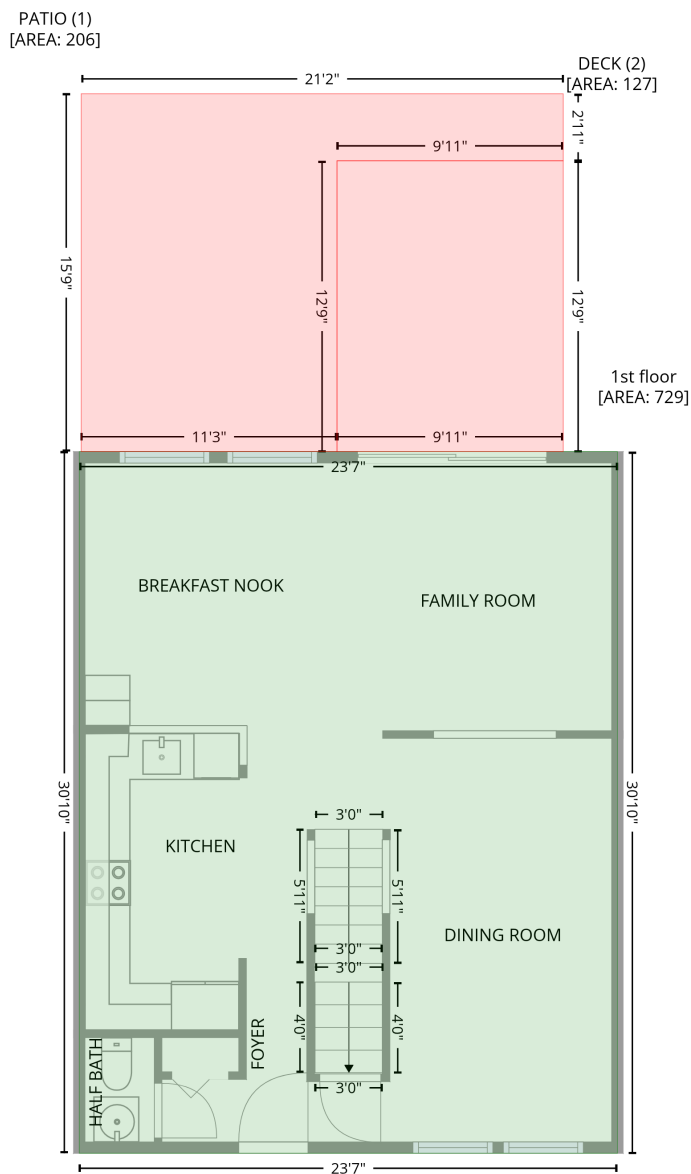
Level 1 - Below Grade

Space	Area (sq. ft)	Calculation <small>Coordinate Polygon Area Algorithm using inches</small>
STORAGE (Non-living area)	254	$-\left(\left(192.1 + 196.1\right) * \left(446.1 - 450.1\right) + \left(196.1 + 315.9\right) * \left(450.1 - 450.1\right) + \left(315.9 + 315.9\right) * \left(450.1 - 610.1\right) + \left(315.9 + 32.5\right) * \left(610.1 - 610.1\right) + \left(32.5 + 32.5\right) * \left(610.1 - 521.9\right) + \left(32.5 + 156.3\right) * \left(521.9 - 521.9\right) + \left(156.3 + 156.3\right) * \left(521.9 - 446.1\right) + \left(156.3 + 192.1\right) * \left(446.1 - 446.1\right)\right) * 0.5 * 0.00694$

3162 29th Street, Boulder, Colorado 80301, United States

Gross Living Area: 1458 sq. ft

Level 2



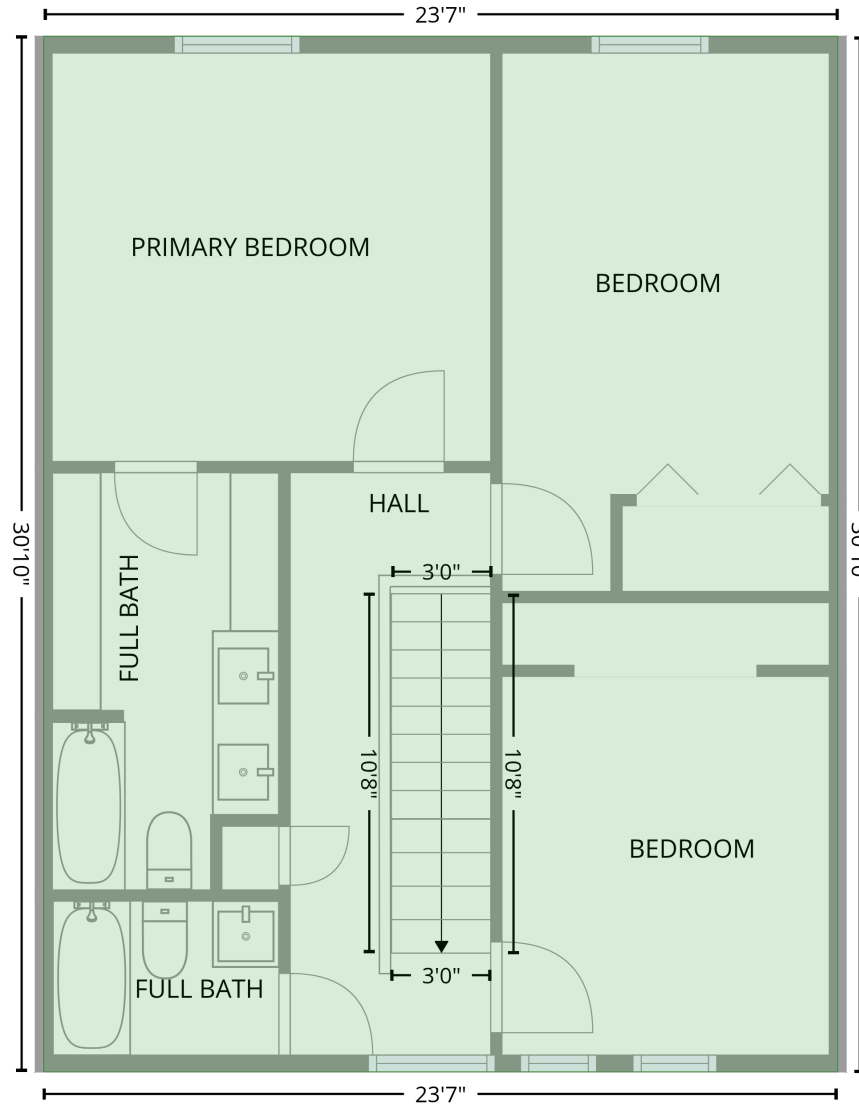
Space	Area (sq. ft)	Calculation
1st floor (Living area)	729	$-\left((315.9 + 315.9) * (240 - 610.2) + (315.9 + 32.4) * (610.2 - 610.2) + (32.4 + 32.4) * (610.2 - 240) + (32.4 + 315.9) * (240 - 240)\right) * 0.5 * 0.00694$
PATIO (Non-living area)	206	$-\left((287.3 + 287.3) * (51.2 - 86.6) + (287.3 + 168.2) * (86.6 - 86.6) + (168.2 + 168.2) * (86.6 - 240) + (168.2 + 33.4) * (240 - 240) + (33.4 + 33.4) * (240 - 51.2) + (33.4 + 287.3) * (51.2 - 51.2)\right) * 0.5 * 0.00694$
DECK (Non-living area)	127	$-\left((287.3 + 287.3) * (86.6 - 240) + (287.3 + 168.2) * (240 - 240) + (168.2 + 168.2) * (240 - 86.6) + (168.2 + 287.3) * (86.6 - 86.6)\right) * 0.5 * 0.00694$

3162 29th Street, Boulder, Colorado 80301, United States

Gross Living Area: 1458 sq. ft

Level 3

2nd floor
[AREA: 729]



Space	Area (sq. ft)	Calculation <small>Coordinate Polygon Area Algorithm using inches</small>
2nd floor (Living area)	729	$-\left((315.9 + 315.9) * (240 - 610.2) + (315.9 + 32.4) * (610.2 - 610.2) + (32.4 + 32.4) * (610.2 - 240) + (32.4 + 315.9) * (240 - 240)\right) * 0.5 * 0.00694$