

Home data report

1623 Bush Farm Dr, Vinton, Virginia, United States



Total Area: 2159 sq. ft

Basement: 615 sq. ft, 1st Floor: 761 sq. ft, 2nd Floor: 783 sq. ft

Excluded: Utility 105 sq. ft, Porch 141 sq. ft, Garage 396 sq. ft, Walls: 212 sq. ft

Property summary

 **3** Floors

 **3** Bedrooms

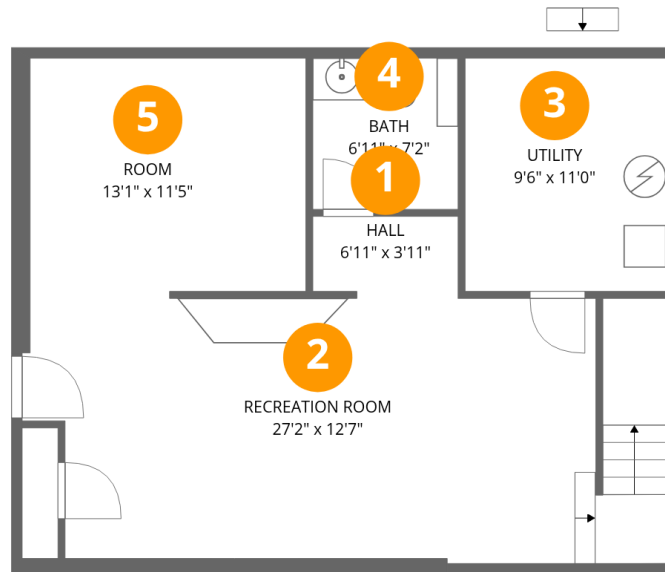
 **2** Bathrooms

Home data report

1623 Bush Farm Dr, Vinton, Virginia, United States

 **2**
Half baths

 **1**
Garages



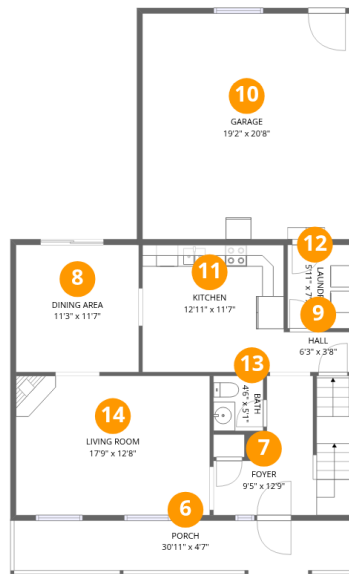
Room dimensions

Floor 1 Below grade

Total: 615 sqft

Excluded: 105 sqft

#		Dimensions	sqft	Counted as living area
1	Hall	6'11" x 3'11"	26 sq. ft	Yes
2	Recreation Room	27'2" x 12'7"	361 sq. ft	Yes
3	Utility	9'6" x 11'0"	105 sq. ft	No
4	Bath	6'11" x 7'2"	49 sq. ft	Yes
5	Room	13'1" x 11'5"	146 sq. ft	Yes



Room dimensions

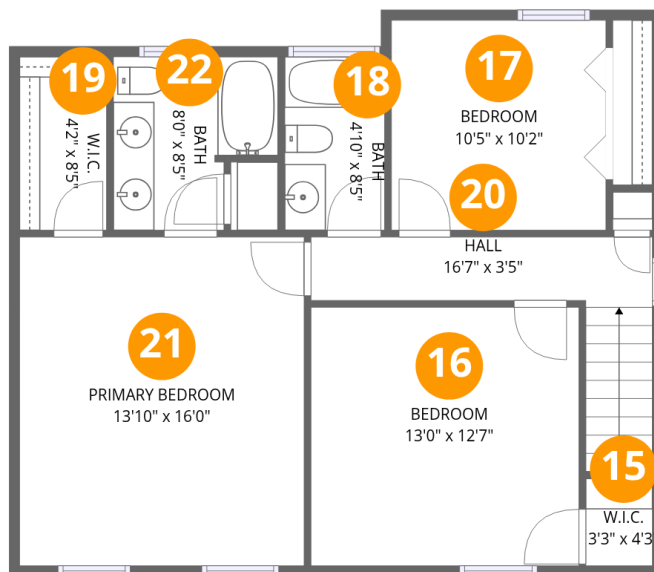
Floor 2

Total: 761 sqft

Excluded: 537 sqft

#		Dimensions	sqft	Counted as living area
6	Porch	30'11" x 4'7"	141 sq. ft	No
7	Foyer	9'5" x 12'9"	121 sq. ft	Yes
8	Dining Area	11'3" x 11'7"	131 sq. ft	Yes
9	Hall	6'3" x 3'8"	23 sq. ft	Yes
10	Garage	19'2" x 20'8"	396 sq. ft	No
11	Kitchen	12'11" x 11'7"	151 sq. ft	Yes
12	Laundry	5'11" x 7'7"	45 sq. ft	Yes
13	Bath	4'6" x 5'1"	23 sq. ft	Yes
14	Living Room	17'9" x 12'8"	226 sq. ft	Yes

1623 Bush Farm Dr, Vinton, Virginia, United States



Room dimensions

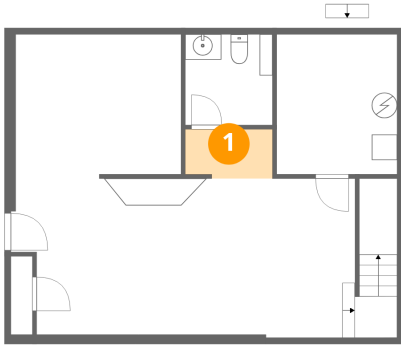
Floor 3

Total: 783 sqft

Excluded: 0 sqft

#		Dimensions	sqft	Counted as living area
15	W.I.C.	3'3" x 4'3"	14 sq. ft	Yes
16	Bedroom	13'0" x 12'7"	164 sq. ft	Yes
17	Bedroom	10'5" x 10'2"	106 sq. ft	Yes
18	Bath	4'10" x 8'5"	41 sq. ft	Yes
19	W.I.C.	4'2" x 8'5"	36 sq. ft	Yes
20	Hall	16'7" x 3'5"	78 sq. ft	Yes
21	Primary Bedroom	13'10" x 16'0"	221 sq. ft	Yes
22	Bath	8'0" x 8'5"	58 sq. ft	Yes

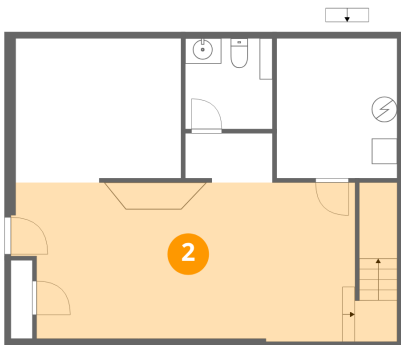
1 Floor 1 - Hall



Dimensions: 6'11" x 3'11"
Area: 26 sq. ft
Counted as living area: Yes

Heated: Yes
Finished: Yes
Enclosed: Yes
Contiguous: Yes
Permitted: Yes
Wet space: No
Addition: No
Conversion: No

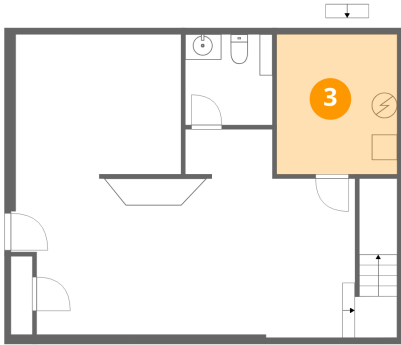
2 Floor 1 - Recreation Room



Dimensions: 27'2" x 12'7"
Area: 361 sq. ft
Counted as living area: Yes

Heated: Yes
Finished: Yes
Enclosed: Yes
Contiguous: Yes
Permitted: Yes
Wet space: No
Addition: No
Conversion: No

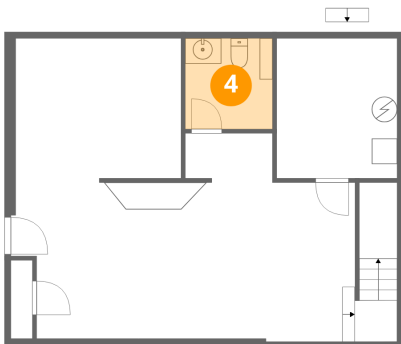
3 Floor 1 - Utility



Dimensions: 9'6" x 11'0"
Area: 105 sq. ft
Counted as living area: No

Heated: Yes
Finished: No
Enclosed: Yes
Contiguous: Yes
Permitted: Yes
Wet space: No
Addition: No
Conversion: No

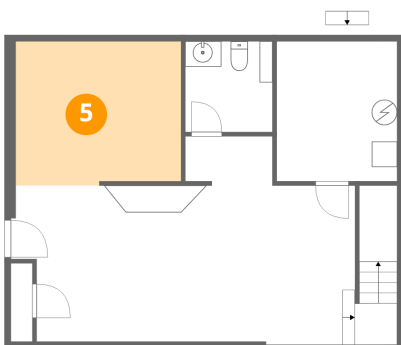
4 Floor 1 - Bath



Dimensions: 6'11" x 7'2"
Area: 49 sq. ft
Counted as living area: Yes

Heated: Yes
Finished: Yes
Enclosed: Yes
Contiguous: Yes
Permitted: Yes
Wet space: Yes
Addition: No
Conversion: No

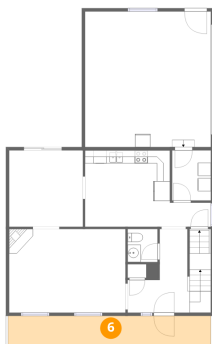
5 Floor 1 - Room



Dimensions: 13'1" x 11'5"
Area: 146 sq. ft
Counted as living area: Yes

Heated: Yes
Finished: Yes
Enclosed: Yes
Contiguous: Yes
Permitted: Yes
Wet space: No
Addition: No
Conversion: No

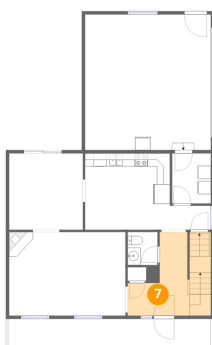
6 Floor 2 - Porch



Dimensions: 30'11" x 4'7"
Area: 141 sq. ft
Counted as living area: No

Heated: No
Finished: No
Enclosed: No
Contiguous: Yes
Permitted: Yes
Wet space: No
Addition: No
Conversion: No

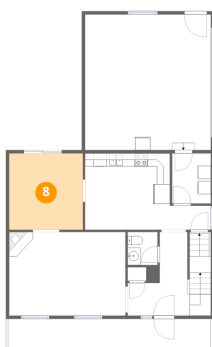
7 Floor 2 - Foyer



Dimensions: 9'5" x 12'9"
Area: 121 sq. ft
Counted as living area: Yes

Heated: Yes
Finished: Yes
Enclosed: Yes
Contiguous: Yes
Permitted: Yes
Wet space: No
Addition: No
Conversion: No

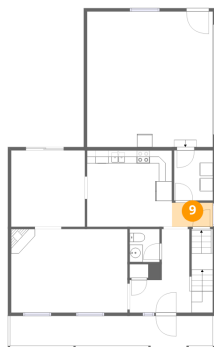
8 Floor 2 - Dining Area



Dimensions: 11'3" x 11'7"
Area: 131 sq. ft
Counted as living area: Yes

Heated: Yes
Finished: Yes
Enclosed: Yes
Contiguous: Yes
Permitted: Yes
Wet space: No
Addition: No
Conversion: No

9 Floor 2 - Hall



Dimensions: 6'3" x 3'8"
Area: 23 sq. ft
Counted as living area: Yes

Heated: Yes
Finished: Yes
Enclosed: Yes
Contiguous: Yes
Permitted: Yes
Wet space: No
Addition: No
Conversion: No

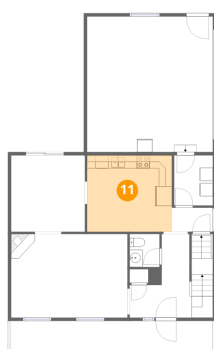
10 Floor 2 - Garage



Dimensions: 19'2" x 20'8"
Area: 396 sq. ft
Counted as living area: No

Heated: No
Finished: No
Enclosed: Yes
Contiguous: Yes
Permitted: Yes
Wet space: No
Addition: No
Conversion: No

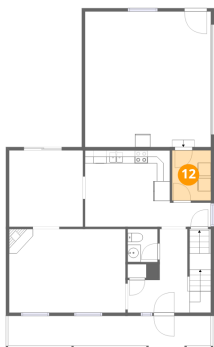
11 Floor 2 - Kitchen



Dimensions: 12'11" x 11'7"
Area: 151 sq. ft
Counted as living area: Yes

Heated: Yes
Finished: Yes
Enclosed: Yes
Contiguous: Yes
Permitted: Yes
Wet space: No
Addition: No
Conversion: No

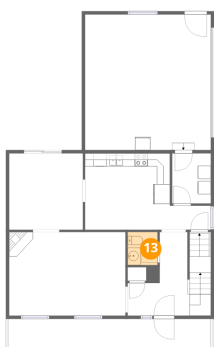
12 Floor 2 - Laundry



Dimensions: 5'11" x 7'7"
Area: 45 sq. ft
Counted as living area: Yes

Heated: Yes
Finished: Yes
Enclosed: Yes
Contiguous: Yes
Permitted: Yes
Wet space: No
Addition: No
Conversion: No

13 Floor 2 - Bath



Dimensions: 4'6" x 5'1"
Area: 23 sq. ft
Counted as living area: Yes

Heated: Yes
Finished: Yes
Enclosed: Yes
Contiguous: Yes
Permitted: Yes
Wet space: Yes
Addition: No
Conversion: No

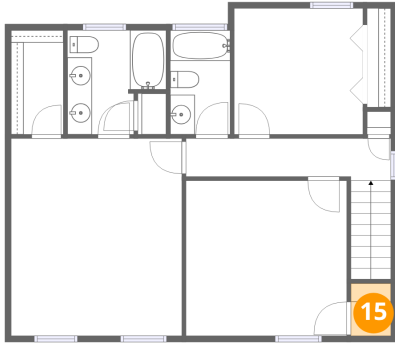
14 Floor 2 - Living Room



Dimensions: 17'9" x 12'8"
Area: 226 sq. ft
Counted as living area: Yes

Heated: Yes
Finished: Yes
Enclosed: Yes
Contiguous: Yes
Permitted: Yes
Wet space: No
Addition: No
Conversion: No

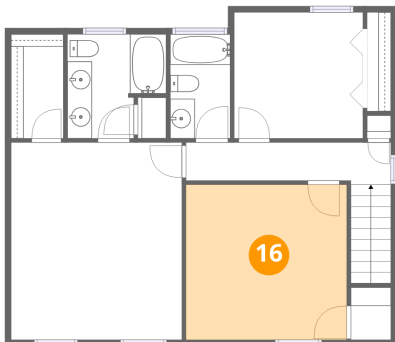
15 Floor 3 - W.I.C.



Dimensions: 3'3" x 4'3"
Area: 14 sq. ft
Counted as living area: Yes

Heated: Yes
Finished: Yes
Enclosed: Yes
Contiguous: Yes
Permitted: Yes
Wet space: No
Addition: No
Conversion: No

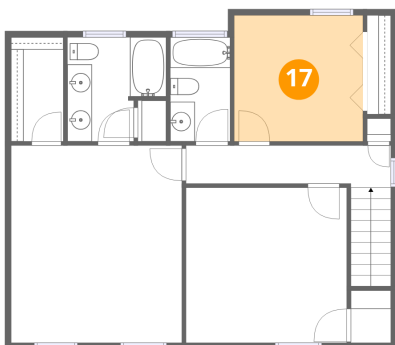
16 Floor 3 - Bedroom



Dimensions: 13'0" x 12'7"
Area: 164 sq. ft
Counted as living area: Yes

Heated: Yes
Finished: Yes
Enclosed: Yes
Contiguous: Yes
Permitted: Yes
Wet space: No
Addition: No
Conversion: No

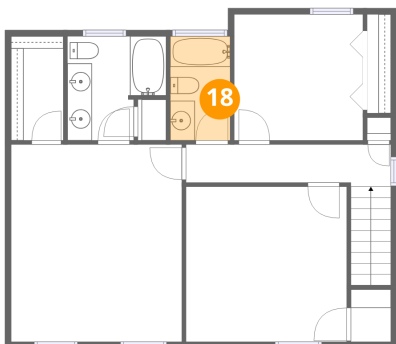
17 Floor 3 - Bedroom



Dimensions: 10'5" x 10'2"
Area: 106 sq. ft
Counted as living area: Yes

Heated: Yes
Finished: Yes
Enclosed: Yes
Contiguous: Yes
Permitted: Yes
Wet space: No
Addition: No
Conversion: No

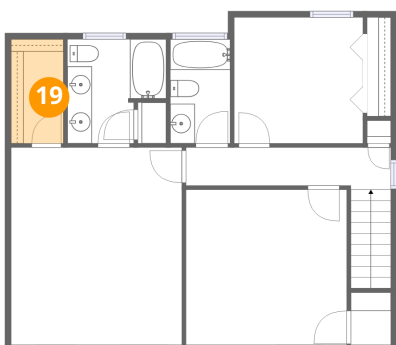
18 Floor 3 - Bath



Dimensions: 4'10" x 8'5"
Area: 41 sq. ft
Counted as living area: Yes

Heated: Yes
Finished: Yes
Enclosed: Yes
Contiguous: Yes
Permitted: Yes
Wet space: Yes
Addition: No
Conversion: No

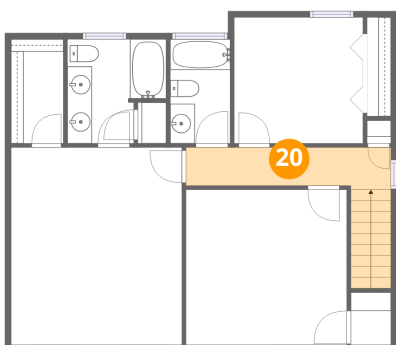
19 Floor 3 - W.I.C.



Dimensions: 4'2" x 8'5"
Area: 36 sq. ft
Counted as living area: Yes

Heated: Yes
Finished: Yes
Enclosed: Yes
Contiguous: Yes
Permitted: Yes
Wet space: No
Addition: No
Conversion: No

20 Floor 3 - Hall



Dimensions: 16'7" x 3'5"
Area: 78 sq. ft
Counted as living area: Yes

Heated: Yes
Finished: Yes
Enclosed: Yes
Contiguous: Yes
Permitted: Yes
Wet space: No
Addition: No
Conversion: No

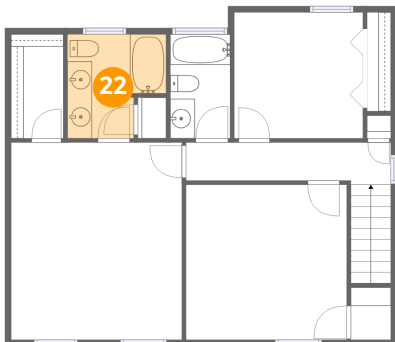
21 Floor 3 - Primary Bedroom



Dimensions: 13'10" x 16'0"
Area: 221 sq. ft
Counted as living area: Yes

Heated: Yes
Finished: Yes
Enclosed: Yes
Contiguous: Yes
Permitted: Yes
Wet space: No
Addition: No
Conversion: No

22 Floor 3 - Bath



Dimensions: 8'0" x 8'5"
Area: 58 sq. ft
Counted as living area: Yes

Heated: Yes
Finished: Yes
Enclosed: Yes
Contiguous: Yes
Permitted: Yes
Wet space: Yes
Addition: No
Conversion: No