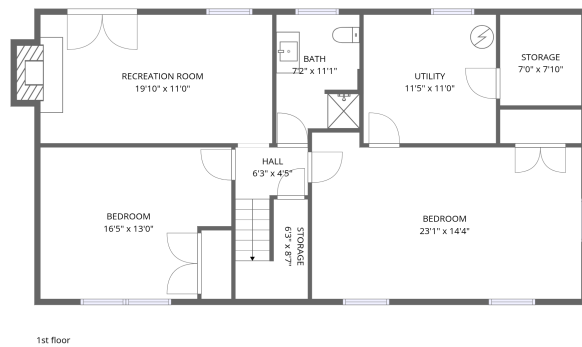
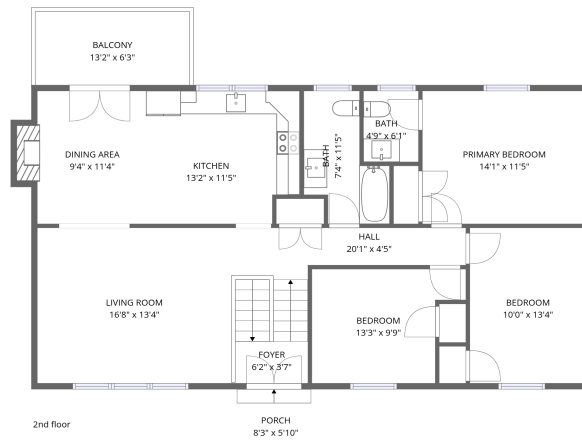


## Home data report

**58 Lakeland Circle, Laymantown, Troutville, Botetourt County, Virginia, United States, 24175**



**Total Area: 2106 sq. ft**

1st Floor: 916 sq. ft, 2nd Floor: 1190 sq. ft

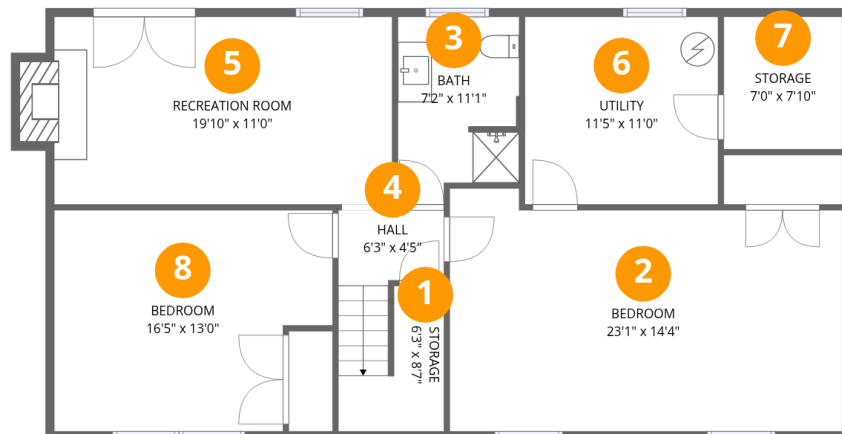
Excluded: Utility 128 sq. ft, Storage 90 sq. ft, Fireplace 12 sq. ft, Balcony 84 sq. ft, Porch 49 sq. ft, Walls: 145 sq. ft

## Property summary



# Home data report

## 58 Lakeland Circle, Laymantown, Troutville, Botetourt County, Virginia, United States, 24175



### Room dimensions

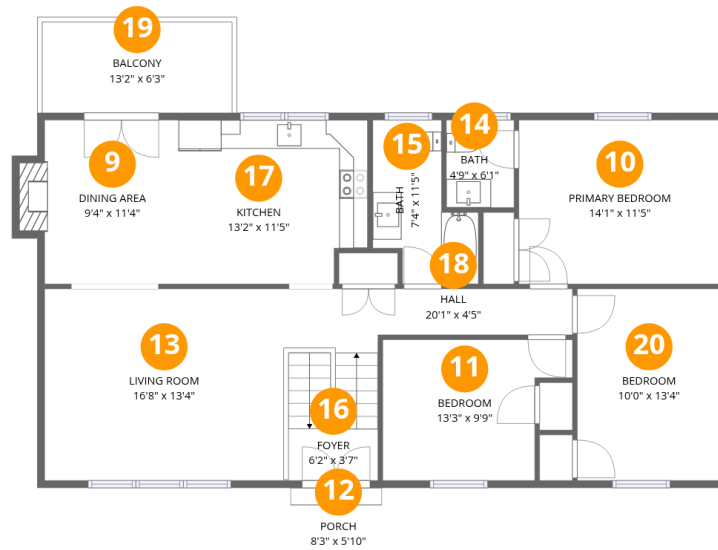
Floor 1

Total:916sqft Excluded: 230sqft

#		Dimensions	sqft	Counted as living area
1	Storage	6'3" x 8'7"	53 sq. ft	No
2	Bedroom	23'1" x 14'4"	330 sq. ft	Yes
3	Bath	7'2" x 11'1"	79 sq. ft	Yes
4	Hall	6'3" x 4'5"	28 sq. ft	Yes
5	Recreation Room	19'10" x 11'0"	219 sq. ft	Yes
6	Utility	11'5" x 11'0"	125 sq. ft	No
7	Storage	7'0" x 7'10"	54 sq. ft	No
8	Bedroom	16'5" x 13'0"	213 sq. ft	Yes

## Home data report

**58 Lakeland Circle, Laymantown, Troutville, Botetourt County, Virginia, United States, 24175**



## Room dimensions

Floor 2

Total: 1190sqft

Excluded: 133sqft

#		Dimensions	sqft	Counted as living area
9	Dining Area	9'4" x 11'4"	106 sq. ft	Yes
10	Primary Bedroom	14'1" x 11'5"	161 sq. ft	Yes
11	Bedroom	13'3" x 9'9"	129 sq. ft	Yes
12	Porch	8'3" x 5'10"	49 sq. ft	No
13	Living Room	16'8" x 13'4"	222 sq. ft	Yes
14	Bath	4'9" x 6'1"	29 sq. ft	Yes
15	Bath	7'4" x 11'5"	84 sq. ft	Yes
16	Foyer	6'2" x 3'7"	22 sq. ft	Yes
17	Kitchen	13'2" x 11'5"	150 sq. ft	Yes
18	Hall	20'1" x 4'5"	89 sq. ft	Yes
19	Balcony	13'2" x 6'3"	83 sq. ft	No

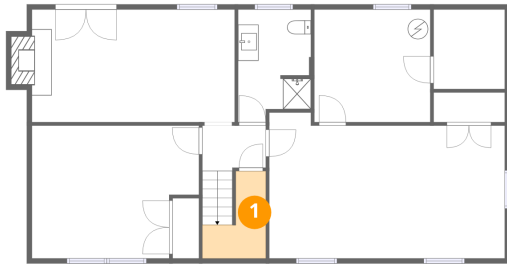
Home data report

**58 Lakeland Circle, Laymantown, Troutville, Botetourt County,  
Virginia, United States, 24175**

#		Dimensions	sqft	Counted as living area
20	Bedroom	10'0" x 13'4"	133 sq. ft	Yes

58 Lakeland Circle, Laymantown, Troutville, Botetourt County, Virginia, United States, 24175

**1** Floor 1 - Storage



Dimensions: 6'3" x 8'7"  
Area: 53 sq. ft  
Counted as living area: No

Heated: No  
Finished: No  
Enclosed: No  
Contiguous: Yes  
Permitted: Yes  
Wet space: No  
Addition: No  
Conversion: No

**2** Floor 1 - Bedroom

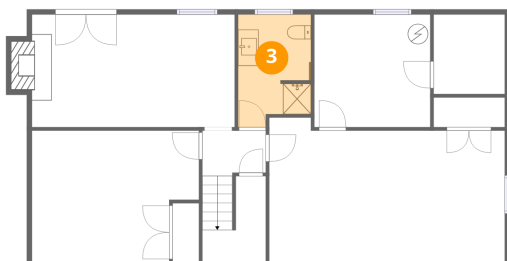


Dimensions: 23'1" x 14'4"  
Area: 330 sq. ft  
Counted as living area: Yes

Heated: Yes  
Finished: Yes  
Enclosed: Yes  
Contiguous: Yes  
Permitted: Yes  
Wet space: No  
Addition: No  
Conversion: No

58 Lakeland Circle, Laymantown, Troutville, Botetourt County, Virginia, United States, 24175

**3** Floor 1 - Bath



Dimensions: 7'2" x 11'1"  
Area: 79 sq. ft  
Counted as living area: Yes

Heated: Yes  
Finished: Yes  
Enclosed: Yes  
Contiguous: Yes  
Permitted: Yes  
Wet space: Yes  
Addition: No  
Conversion: No

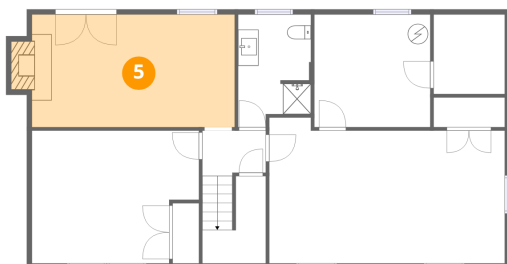
**4** Floor 1 - Hall



Dimensions: 6'3" x 4'5"  
Area: 28 sq. ft  
Counted as living area: Yes

Heated: Yes  
Finished: Yes  
Enclosed: Yes  
Contiguous: Yes  
Permitted: Yes  
Wet space: No  
Addition: No  
Conversion: No

**5** Floor 1 - Recreation Room

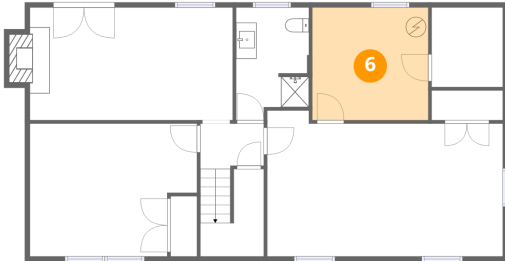


Dimensions: 19'10" x 11'0"  
Area: 219 sq. ft  
Counted as living area: Yes

Heated: Yes  
Finished: Yes  
Enclosed: Yes  
Contiguous: Yes  
Permitted: Yes  
Wet space: No  
Addition: No  
Conversion: No

58 Lakeland Circle, Laymantown, Troutville, Botetourt County, Virginia, United States, 24175

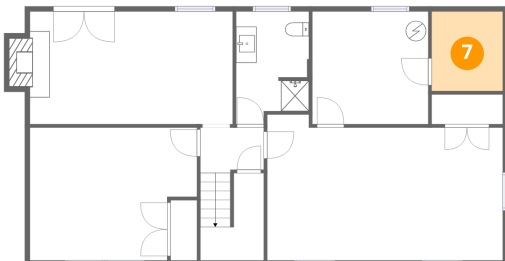
**6** Floor 1 - Utility



Dimensions: 11'5" x 11'0"  
Area: 125 sq. ft  
Counted as living area: No

Heated: Yes  
Finished: No  
Enclosed: Yes  
Contiguous: Yes  
Permitted: Yes  
Wet space: No  
Addition: No  
Conversion: No

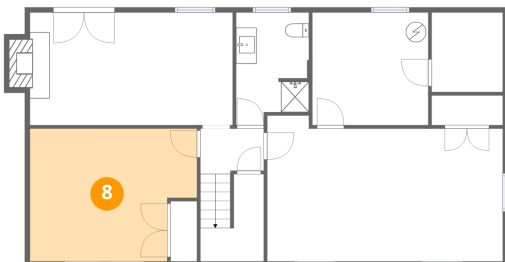
**7** Floor 1 - Storage



Dimensions: 7'0" x 7'10"  
Area: 54 sq. ft  
Counted as living area: No

Heated: No  
Finished: No  
Enclosed: No  
Contiguous: Yes  
Permitted: Yes  
Wet space: No  
Addition: No  
Conversion: No

**8** Floor 1 - Bedroom



Dimensions: 16'5" x 13'0"  
Area: 213 sq. ft  
Counted as living area: Yes

Heated: Yes  
Finished: Yes  
Enclosed: Yes  
Contiguous: Yes  
Permitted: Yes  
Wet space: No  
Addition: No  
Conversion: No

58 Lakeland Circle, Laymantown, Troutville, Botetourt County, Virginia, United States, 24175

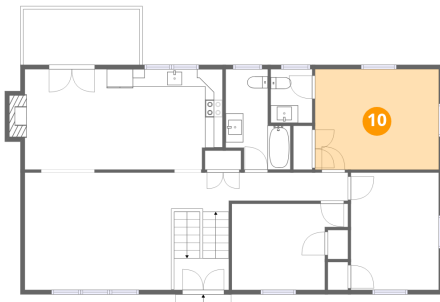
9 Floor 2 - Dining Area



Dimensions: 9'4" x 11'4"  
Area: 106 sq. ft  
Counted as living area: Yes

Heated: Yes  
Finished: Yes  
Enclosed: Yes  
Contiguous: Yes  
Permitted: Yes  
Wet space: No  
Addition: No  
Conversion: No

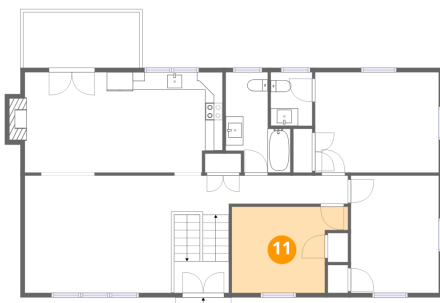
10 Floor 2 - Primary Bedroom



Dimensions: 14'1" x 11'5"  
Area: 161 sq. ft  
Counted as living area: Yes

Heated: Yes  
Finished: Yes  
Enclosed: Yes  
Contiguous: Yes  
Permitted: Yes  
Wet space: No  
Addition: No  
Conversion: No

11 Floor 2 - Bedroom



Dimensions: 13'3" x 9'9"  
Area: 129 sq. ft  
Counted as living area: Yes

Heated: Yes  
Finished: Yes  
Enclosed: Yes  
Contiguous: Yes  
Permitted: Yes  
Wet space: No  
Addition: No  
Conversion: No

58 Lakeland Circle, Laymantown, Troutville, Botetourt County, Virginia, United States, 24175

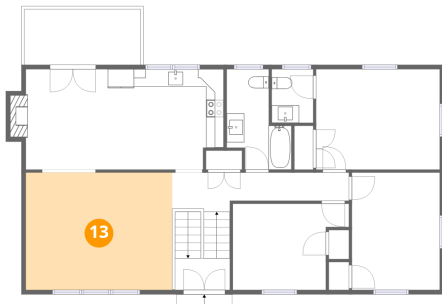
**12** Floor 2 - Porch



Dimensions: 8'3" x 5'10"  
Area: 49 sq. ft  
Counted as living area: No

Heated: No  
Finished: No  
Enclosed: No  
Contiguous: Yes  
Permitted: Yes  
Wet space: No  
Addition: No  
Conversion: No

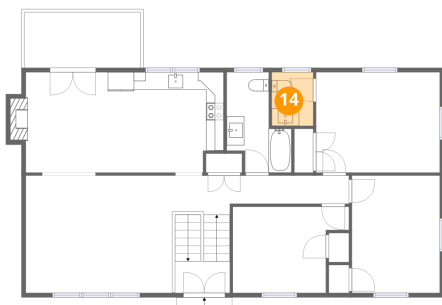
**13** Floor 2 - Living Room



Dimensions: 16'8" x 13'4"  
Area: 222 sq. ft  
Counted as living area: Yes

Heated: Yes  
Finished: Yes  
Enclosed: Yes  
Contiguous: Yes  
Permitted: Yes  
Wet space: No  
Addition: No  
Conversion: No

**14** Floor 2 - Bath

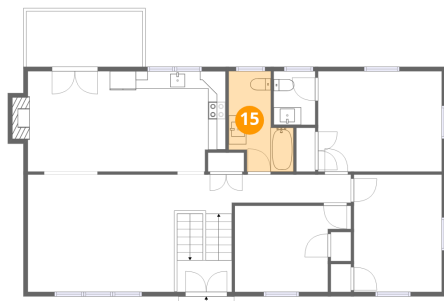


Dimensions: 4'9" x 6'1"  
Area: 29 sq. ft  
Counted as living area: Yes

Heated: Yes  
Finished: Yes  
Enclosed: Yes  
Contiguous: Yes  
Permitted: Yes  
Wet space: Yes  
Addition: No  
Conversion: No

58 Lakeland Circle, Laymantown, Troutville, Botetourt County, Virginia, United States, 24175

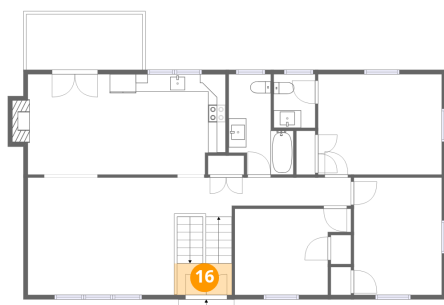
**15** Floor 2 - Bath



Dimensions: 7'4" x 11'5"  
Area: 84 sq. ft  
Counted as living area: Yes

Heated: Yes  
Finished: Yes  
Enclosed: Yes  
Contiguous: Yes  
Permitted: Yes  
Wet space: Yes  
Addition: No  
Conversion: No

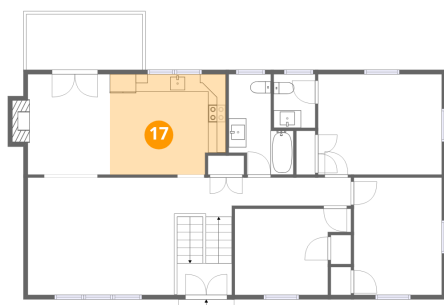
**16** Floor 2 - Foyer



Dimensions: 6'2" x 3'7"  
Area: 22 sq. ft  
Counted as living area: Yes

Heated: Yes  
Finished: Yes  
Enclosed: Yes  
Contiguous: Yes  
Permitted: Yes  
Wet space: No  
Addition: No  
Conversion: No

**17** Floor 2 - Kitchen

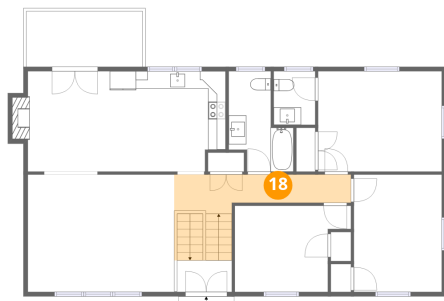


Dimensions: 13'2" x 11'5"  
Area: 150 sq. ft  
Counted as living area: Yes

Heated: Yes  
Finished: Yes  
Enclosed: Yes  
Contiguous: Yes  
Permitted: Yes  
Wet space: No  
Addition: No  
Conversion: No

58 Lakeland Circle, Laymantown, Troutville, Botetourt County, Virginia, United States, 24175

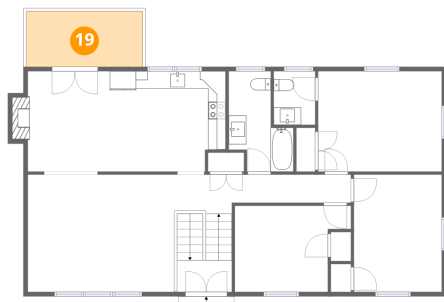
**18** Floor 2 - Hall



Dimensions: 20'1" x 4'5"  
Area: 89 sq. ft  
Counted as living area: Yes

Heated: Yes  
Finished: Yes  
Enclosed: Yes  
Contiguous: Yes  
Permitted: Yes  
Wet space: No  
Addition: No  
Conversion: No

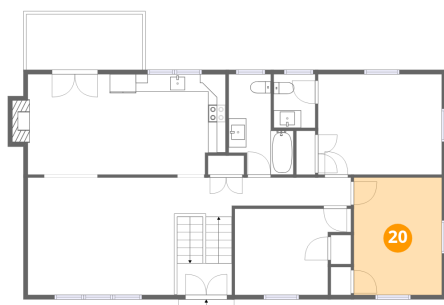
**19** Floor 2 - Balcony



Dimensions: 13'2" x 6'3"  
Area: 83 sq. ft  
Counted as living area: No

Heated: No  
Finished: No  
Enclosed: No  
Contiguous: Yes  
Permitted: Yes  
Wet space: No  
Addition: No  
Conversion: No

**20** Floor 2 - Bedroom



Dimensions: 10'0" x 13'4"  
Area: 133 sq. ft  
Counted as living area: Yes

Heated: Yes  
Finished: Yes  
Enclosed: Yes  
Contiguous: Yes  
Permitted: Yes  
Wet space: No  
Addition: No  
Conversion: No