

## Home data report

5729 New York Highway 14, Alton, Sodus, Wayne County, New York, United States, 14551



**Total Area: 1286 sq. ft**

Basement: 0 sq. ft, 1st Floor: 741 sq. ft, 2nd Floor: 545 sq. ft

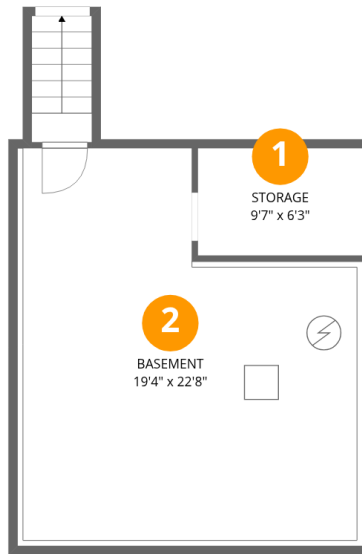
Excluded: Basement 404 sq. ft, Storage 60 sq. ft, Undefined 52 sq. ft, Porch 105 sq. ft, Deck 159 sq. ft, Walls: 162 sq. ft

## Property summary



Home data report

5729 New York Highway 14, Alton, Sodus, Wayne County, New York, United States, 14551



## Room dimensions

Floor 1 Below grade

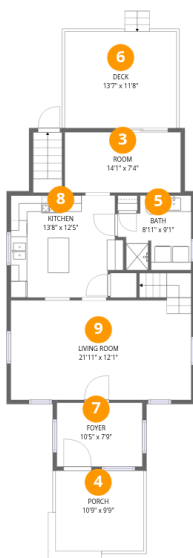
Total:0sqft

Excluded: 490sqft

#		Dimensions	sqft	Counted as living area
1	Storage	9'7" x 6'3"	60 sq. ft	No
2	Basement	19'4" x 22'8"	397 sq. ft	No

## Home data report

5729 New York Highway 14, Alton, Sodus, Wayne County, New York, United States, 14551



## Room dimensions

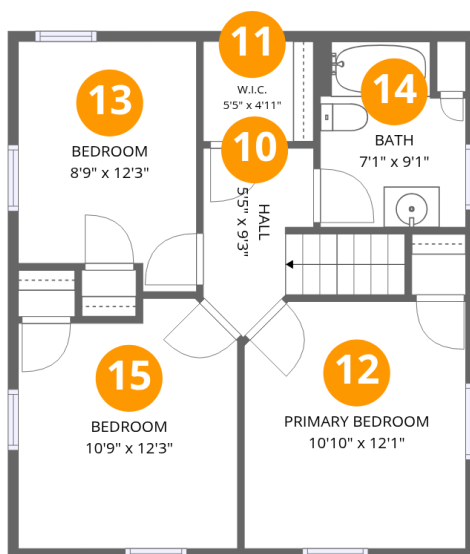
Floor 2

Total:741sqft Excluded: 290sqft

#		Dimensions	sqft	Counted as living area
3	Room	14'1" x 7'4"	103 sq. ft	Yes
4	Porch	10'9" x 9'9"	105 sq. ft	No
5	Bath	8'11" x 9'1"	70 sq. ft	Yes
6	Deck	13'7" x 11'8"	159 sq. ft	No
7	Foyer	10'5" x 7'9"	81 sq. ft	Yes
8	Kitchen	13'8" x 12'5"	159 sq. ft	Yes
9	Living Room	21'11" x 12'1"	285 sq. ft	Yes

## Home data report

5729 New York Highway 14, Alton, Sodus, Wayne County, New York, United States, 14551



## Room dimensions

Floor 3

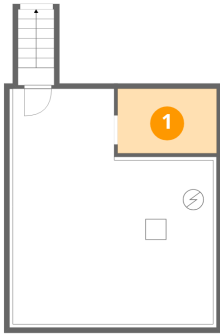
Total:545sqft Excluded: 0sqft

#		Dimensions	sqft	Counted as living area
10	Hall	5'5" x 9'3"	56 sq. ft	Yes
11	W.I.C.	5'5" x 4'11"	26 sq. ft	Yes
12	Primary Bedroom	10'10" x 12'1"	129 sq. ft	Yes
13	Bedroom	8'9" x 12'3"	99 sq. ft	Yes
14	Bath	7'1" x 9'1"	60 sq. ft	Yes
15	Bedroom	10'9" x 12'3"	122 sq. ft	Yes

5729 New York Highway 14, Alton, Sodus, Wayne County, New York, United States, 14551

**1** Floor 1 - Storage

---

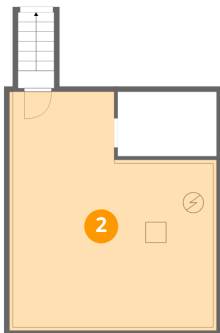


Dimensions: 9'7" x 6'3"  
Area: 60 sq. ft  
Counted as living area: No

Heated: No  
Finished: No  
Enclosed: No  
Contiguous: Yes  
Permitted: Yes  
Wet space: No  
Addition: No  
Conversion: No

**2** Floor 1 - Basement

---



Dimensions: 19'4" x 22'8"  
Area: 397 sq. ft  
Counted as living area: No

Heated: Yes  
Finished: No  
Enclosed: Yes  
Contiguous: Yes  
Permitted: Yes  
Wet space: No  
Addition: No  
Conversion: No

# 5729 New York Highway 14, Alton, Sodus, Wayne County, New York, United States, 14551

## 3 Floor 2 - Room



Dimensions: 14'1" x 7'4"  
Area: 103 sq. ft  
Counted as living area: Yes

Heated: Yes  
Finished: Yes  
Enclosed: Yes  
Contiguous: Yes  
Permitted: Yes  
Wet space: No  
Addition: No  
Conversion: No

## 4 Floor 2 - Porch



Dimensions: 10'9" x 9'9"  
Area: 105 sq. ft  
Counted as living area: No

Heated: No  
Finished: No  
Enclosed: No  
Contiguous: Yes  
Permitted: Yes  
Wet space: No  
Addition: No  
Conversion: No

## 5 Floor 2 - Bath



Dimensions: 8'11" x 9'1"  
Area: 70 sq. ft  
Counted as living area: Yes

Heated: Yes  
Finished: Yes  
Enclosed: Yes  
Contiguous: Yes  
Permitted: Yes  
Wet space: Yes  
Addition: No  
Conversion: No

5729 New York Highway 14, Alton, Sodus, Wayne County, New York, United States, 14551

**6** Floor 2 - Deck



Dimensions: 13'7" x 11'8"  
Area: 159 sq. ft  
Counted as living area: No

Heated: No  
Finished: No  
Enclosed: No  
Contiguous: Yes  
Permitted: Yes  
Wet space: No  
Addition: No  
Conversion: No

**7** Floor 2 - Foyer



Dimensions: 10'5" x 7'9"  
Area: 81 sq. ft  
Counted as living area: Yes

Heated: Yes  
Finished: Yes  
Enclosed: Yes  
Contiguous: Yes  
Permitted: Yes  
Wet space: No  
Addition: No  
Conversion: No

**8** Floor 2 - Kitchen



Dimensions: 13'8" x 12'5"  
Area: 159 sq. ft  
Counted as living area: Yes

Heated: Yes  
Finished: Yes  
Enclosed: Yes  
Contiguous: Yes  
Permitted: Yes  
Wet space: No  
Addition: No  
Conversion: No

# 5729 New York Highway 14, Alton, Sodus, Wayne County, New York, United States, 14551

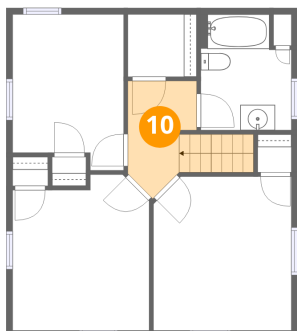
## 9 Floor 2 - Living Room



Dimensions: 21'11" x 12'1"  
Area: 285 sq. ft  
Counted as living area: Yes

Heated: Yes  
Finished: Yes  
Enclosed: Yes  
Contiguous: Yes  
Permitted: Yes  
Wet space: No  
Addition: No  
Conversion: No

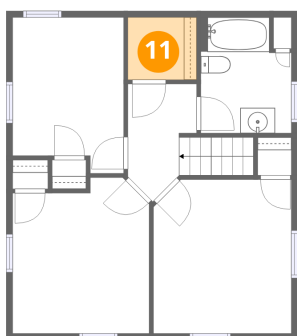
## 10 Floor 3 - Hall



Dimensions: 5'5" x 9'3"  
Area: 56 sq. ft  
Counted as living area: Yes

Heated: Yes  
Finished: Yes  
Enclosed: Yes  
Contiguous: Yes  
Permitted: Yes  
Wet space: No  
Addition: No  
Conversion: No

## 11 Floor 3 - W.I.C.

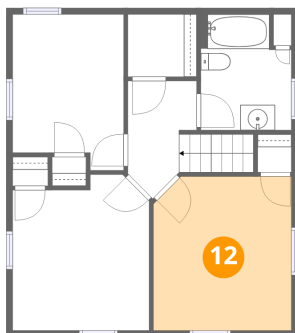


Dimensions: 5'5" x 4'11"  
Area: 26 sq. ft  
Counted as living area: Yes

Heated: Yes  
Finished: Yes  
Enclosed: Yes  
Contiguous: Yes  
Permitted: Yes  
Wet space: No  
Addition: No  
Conversion: No

5729 New York Highway 14, Alton, Sodus, Wayne County, New York, United States, 14551

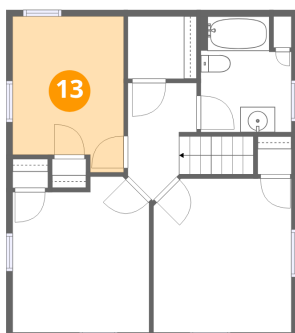
### 12 Floor 3 - Primary Bedroom



Dimensions: 10'10" x 12'1"  
Area: 129 sq. ft  
Counted as living area: Yes

Heated: Yes  
Finished: Yes  
Enclosed: Yes  
Contiguous: Yes  
Permitted: Yes  
Wet space: No  
Addition: No  
Conversion: No

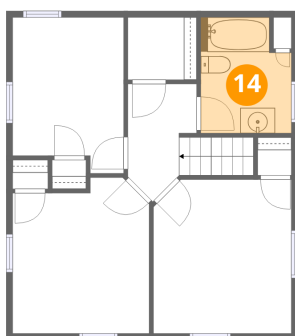
### 13 Floor 3 - Bedroom



Dimensions: 8'9" x 12'3"  
Area: 99 sq. ft  
Counted as living area: Yes

Heated: Yes  
Finished: Yes  
Enclosed: Yes  
Contiguous: Yes  
Permitted: Yes  
Wet space: No  
Addition: No  
Conversion: No

### 14 Floor 3 - Bath



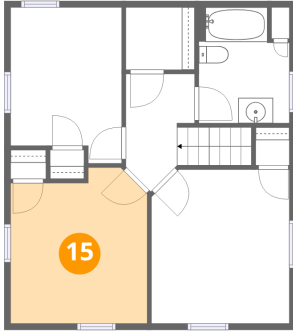
Dimensions: 7'1" x 9'1"  
Area: 60 sq. ft  
Counted as living area: Yes

Heated: Yes  
Finished: Yes  
Enclosed: Yes  
Contiguous: Yes  
Permitted: Yes  
Wet space: Yes  
Addition: No  
Conversion: No

Home data report

5729 New York Highway 14, Alton, Sodus, Wayne County, New York, United States, 14551

**15** Floor 3 - Bedroom



Dimensions: 10'9" x 12'3"

Area: 122 sq. ft

Counted as living area: Yes

Heated: Yes

Finished: Yes

Enclosed: Yes

Contiguous: Yes

Permitted: Yes

Wet space: No

Addition: No

Conversion: No