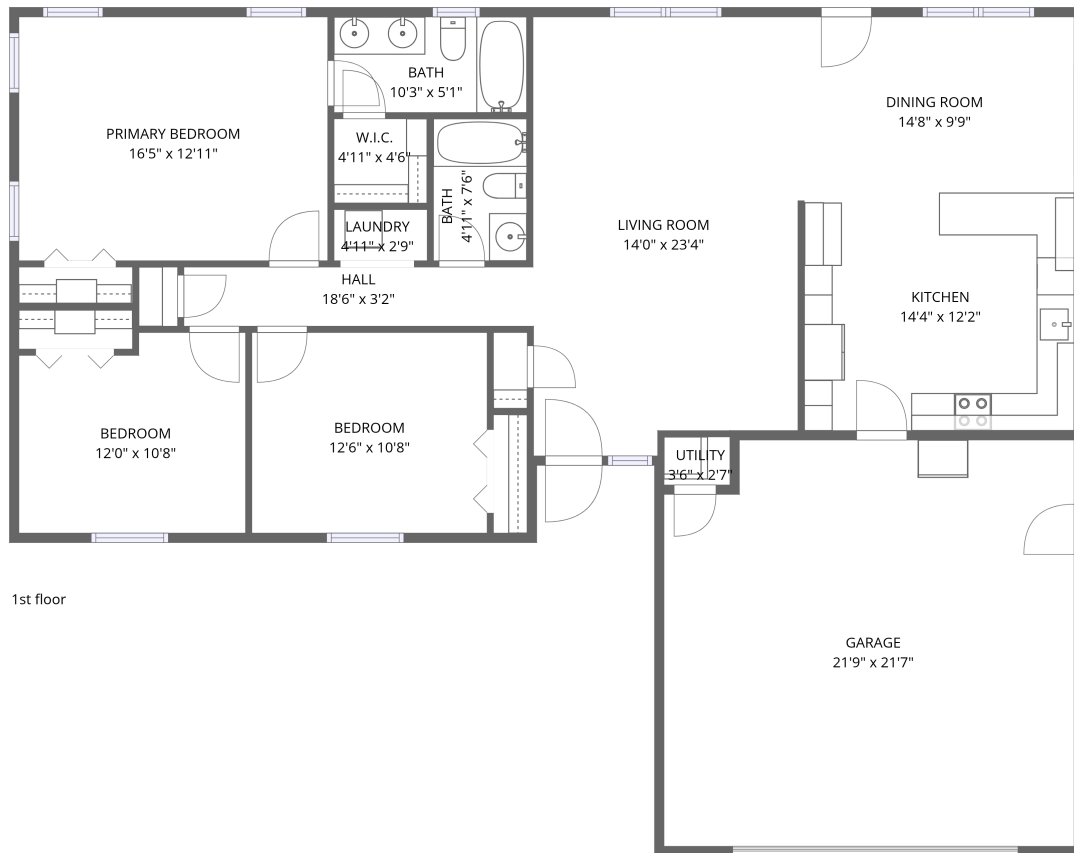


Home data report

# 531 South Truman Road, Archie, Cass County, Missouri, United States, 64725




**Total Area: 1387 sq. ft**

1st Floor: 1387 sq. ft

Excluded: Garage 469 sq. ft, Walls: 118 sq. ft

## Property summary

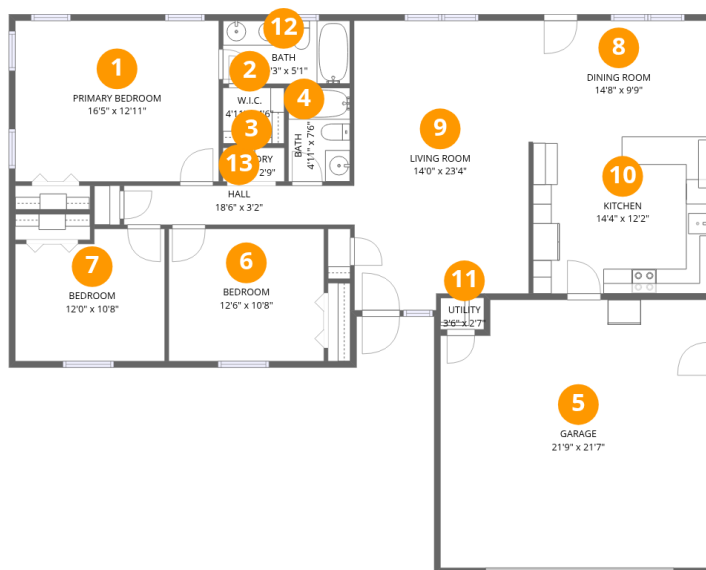
 **1** Floors

 **3** Bedrooms

 **2** Bathrooms

 **1** Garages

# 531 South Truman Road, Archie, Cass County, Missouri, United States, 64725



## Room dimensions

Floor 1

Total:1387sqft Excluded: 469sqft

#		Dimensions	sqft	Counted as living area
1	Primary Bedroom	16'5" x 12'11"	212 sq. ft	Yes
2	W.I.C.	4'11" x 4'6"	22 sq. ft	Yes
3	Laundry	4'11" x 2'9"	13 sq. ft	Yes
4	Bath	4'11" x 7'6"	37 sq. ft	Yes
5	Garage	21'9" x 21'7"	458 sq. ft	No
6	Bedroom	12'6" x 10'8"	133 sq. ft	Yes
7	Bedroom	12'0" x 10'8"	120 sq. ft	Yes
8	Dining Room	14'8" x 9'9"	143 sq. ft	Yes
9	Living Room	14'0" x 23'4"	318 sq. ft	Yes
10	Kitchen	14'4" x 12'2"	175 sq. ft	Yes
11	Utility	3'6" x 2'7"	9 sq. ft	Yes

Home data report

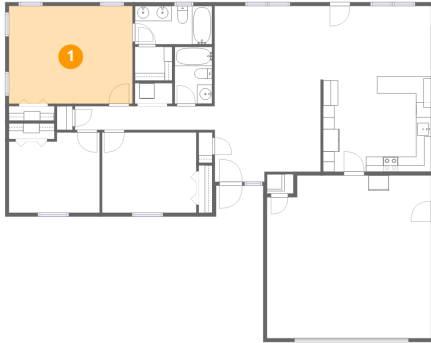
**531 South Truman Road, Archie, Cass County, Missouri, United States, 64725**

#		Dimensions	sqft	Counted as living area
12	Bath	10'3" x 5'1"	52 sq. ft	Yes
13	Hall	18'6" x 3'2"	58 sq. ft	Yes

# 531 South Truman Road, Archie, Cass County, Missouri, United States, 64725

## 1 Floor 1 - Primary Bedroom

---



Dimensions: 16'5" x 12'11"  
Area: 212 sq. ft  
Counted as living area: Yes

Heated: Yes  
Finished: Yes  
Enclosed: Yes  
Contiguous: Yes  
Permitted: Yes  
Wet space: No  
Addition: No  
Conversion: No

## 2 Floor 1 - W.I.C.

---



Dimensions: 4'11" x 4'6"  
Area: 22 sq. ft  
Counted as living area: Yes

Heated: Yes  
Finished: Yes  
Enclosed: Yes  
Contiguous: Yes  
Permitted: Yes  
Wet space: No  
Addition: No  
Conversion: No

### 3 Floor 1 - Laundry



Dimensions: 4'11" x 2'9"  
Area: 13 sq. ft  
Counted as living area: Yes

Heated: Yes  
Finished: Yes  
Enclosed: Yes  
Contiguous: Yes  
Permitted: Yes  
Wet space: No  
Addition: No  
Conversion: No

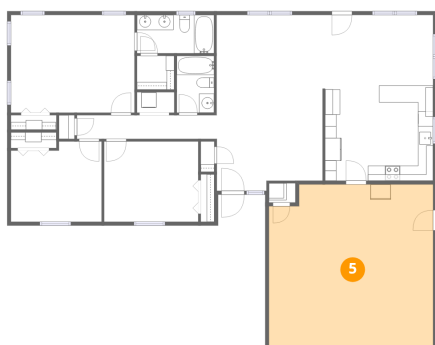
### 4 Floor 1 - Bath



Dimensions: 4'11" x 7'6"  
Area: 37 sq. ft  
Counted as living area: Yes

Heated: Yes  
Finished: Yes  
Enclosed: Yes  
Contiguous: Yes  
Permitted: Yes  
Wet space: Yes  
Addition: No  
Conversion: No

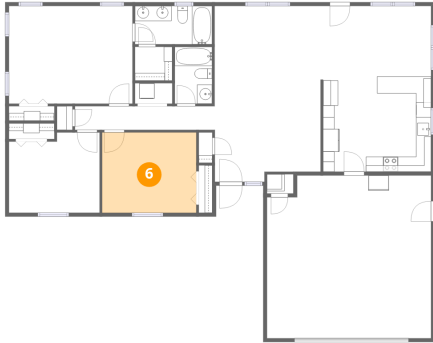
### 5 Floor 1 - Garage



Dimensions: 21'9" x 21'7"  
Area: 458 sq. ft  
Counted as living area: No

Heated: No  
Finished: No  
Enclosed: Yes  
Contiguous: Yes  
Permitted: Yes  
Wet space: No  
Addition: No  
Conversion: No

**6** Floor 1 - Bedroom



Dimensions: 12'6" x 10'8"  
Area: 133 sq. ft  
Counted as living area: Yes

Heated: Yes  
Finished: Yes  
Enclosed: Yes  
Contiguous: Yes  
Permitted: Yes  
Wet space: No  
Addition: No  
Conversion: No

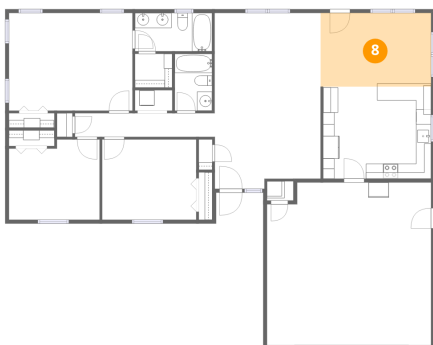
**7** Floor 1 - Bedroom



Dimensions: 12'0" x 10'8"  
Area: 120 sq. ft  
Counted as living area: Yes

Heated: Yes  
Finished: Yes  
Enclosed: Yes  
Contiguous: Yes  
Permitted: Yes  
Wet space: No  
Addition: No  
Conversion: No

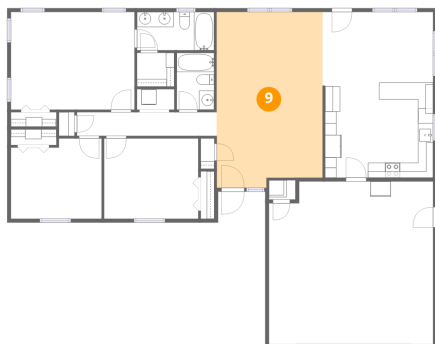
**8** Floor 1 - Dining Room



Dimensions: 14'8" x 9'9"  
Area: 143 sq. ft  
Counted as living area: Yes

Heated: Yes  
Finished: Yes  
Enclosed: Yes  
Contiguous: Yes  
Permitted: Yes  
Wet space: No  
Addition: No  
Conversion: No

### 9 Floor 1 - Living Room



Dimensions: 14'0" x 23'4"  
Area: 318 sq. ft  
Counted as living area: Yes

Heated: Yes  
Finished: Yes  
Enclosed: Yes  
Contiguous: Yes  
Permitted: Yes  
Wet space: No  
Addition: No  
Conversion: No

### 10 Floor 1 - Kitchen



Dimensions: 14'4" x 12'2"  
Area: 175 sq. ft  
Counted as living area: Yes

Heated: Yes  
Finished: Yes  
Enclosed: Yes  
Contiguous: Yes  
Permitted: Yes  
Wet space: No  
Addition: No  
Conversion: No

### 11 Floor 1 - Utility



Dimensions: 3'6" x 2'7"  
Area: 9 sq. ft  
Counted as living area: No

Heated: Yes  
Finished: No  
Enclosed: Yes  
Contiguous: Yes  
Permitted: Yes  
Wet space: No  
Addition: No  
Conversion: No

531 South Truman Road, Archie, Cass County, Missouri, United States, 64725

**12** Floor 1 - Bath



Dimensions: 10'3" x 5'1"  
Area: 52 sq. ft  
Counted as living area: Yes

Heated: Yes  
Finished: Yes  
Enclosed: Yes  
Contiguous: Yes  
Permitted: Yes  
Wet space: Yes  
Addition: No  
Conversion: No

**13** Floor 1 - Hall



Dimensions: 18'6" x 3'2"  
Area: 58 sq. ft  
Counted as living area: Yes

Heated: Yes  
Finished: Yes  
Enclosed: Yes  
Contiguous: Yes  
Permitted: Yes  
Wet space: No  
Addition: No  
Conversion: No