

Home data report

825 Salaberry Street, Rothwell Heights - Beacon Hill North,  
Beaconwood, Gloucester, Ontario, Canada, K1J 6Y5



**Total Area: 1426 sq. ft**

Basement 1: 0 sq. ft, 1st Floor: 655 sq. ft, 2nd Floor: 771 sq. ft

Excluded: Utility 214 sq. ft, Laundry 63 sq. ft, Basement 371 sq. ft, Fireplace 8 sq. ft, Walls: 161 sq. ft

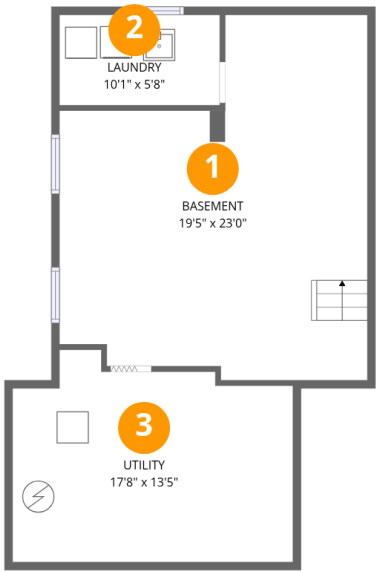
Property summary

 **3** Floors

 **4** Bedrooms

 **1** Bathrooms

825 Salaberry Street, Rothwell Heights - Beacon Hill North,  
Beaconwood, Gloucester, Ontario, Canada, K1J 6Y5

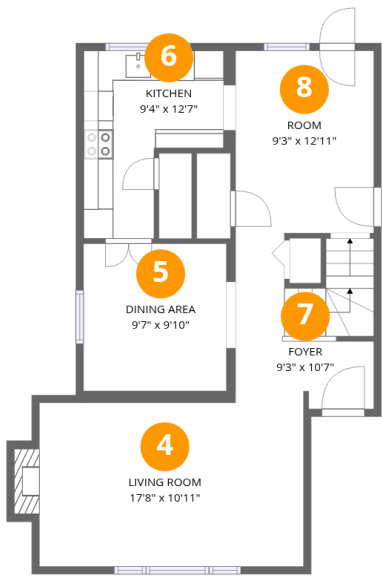


Room dimensions

Floor 1 Below grade Total:0sqft   Excluded: 648sqft

#		Dimensions	sqft	Counted as living area
1	Basement	19'5" x 23'0"	447 sq. ft	No
2	Laundry	10'1" x 5'8"	57 sq. ft	No
3	Utility	17'8" x 13'5"	236 sq. ft	No

825 Salaberry Street, Rothwell Heights - Beacon Hill North,  
Beaconwood, Gloucester, Ontario, Canada, K1J 6Y5

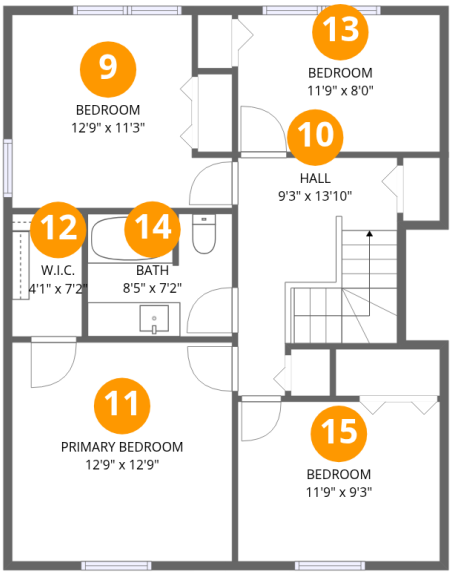


Room dimensions

Floor 2 Total:655sqft   Excluded: 8sqft

#		Dimensions	sqft	Counted as living area
4	Living Room	17'8" x 10'11"	194 sq. ft	Yes
5	Dining Area	9'7" x 9'10"	94 sq. ft	Yes
6	Kitchen	9'4" x 12'7"	117 sq. ft	Yes
7	Foyer	9'3" x 10'7"	98 sq. ft	Yes
8	Room	9'3" x 12'11"	119 sq. ft	Yes

825 Salaberry Street, Rothwell Heights - Beacon Hill North,  
Beaconwood, Gloucester, Ontario, Canada, K1J 6Y5



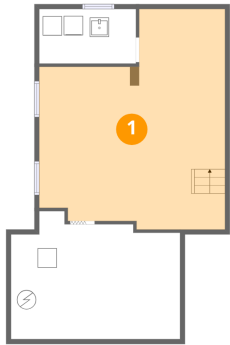
Room dimensions

Floor 3 Total:771sqft   Excluded: 0sqft

#		Dimensions	sqft	Counted as living area
9	Bedroom	12'9" x 11'3"	143 sq. ft	Yes
10	Hall	9'3" x 13'10"	128 sq. ft	Yes
11	Primary Bedroom	12'9" x 12'9"	163 sq. ft	Yes
12	W.I.C.	4'1" x 7'2"	29 sq. ft	Yes
13	Bedroom	11'9" x 8'0"	93 sq. ft	Yes
14	Bath	8'5" x 7'2"	60 sq. ft	Yes
15	Bedroom	11'9" x 9'3"	109 sq. ft	Yes

825 Salaberry Street, Rothwell Heights - Beacon Hill North,  
Beaconwood, Gloucester, Ontario, Canada, K1J 6Y5

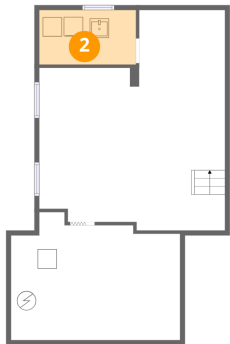
1 Floor 1 - Basement



Dimensions: 19'5" x 23'0"  
Area: 447 sq. ft  
Counted as living area: No

Heated: Yes  
Finished: No  
Enclosed: Yes  
Contiguous: Yes  
Permitted: Yes  
Wet space: No  
Addition: No  
Conversion: No

2 Floor 1 - Laundry

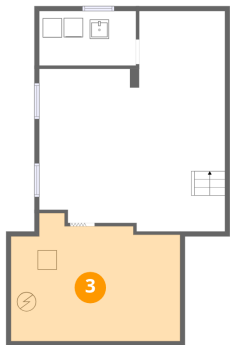


Dimensions: 10'1" x 5'8"  
Area: 57 sq. ft  
Counted as living area: No

Heated: Yes  
Finished: No  
Enclosed: Yes  
Contiguous: Yes  
Permitted: Yes  
Wet space: No  
Addition: No  
Conversion: No

825 Salaberry Street, Rothwell Heights - Beacon Hill North,  
Beaconwood, Gloucester, Ontario, Canada, K1J 6Y5

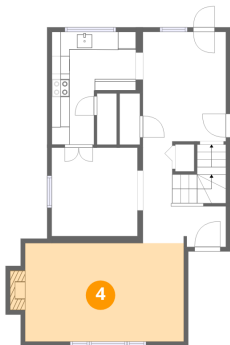
3 Floor 1 - Utility



Dimensions: 17'8" x 13'5"  
Area: 236 sq. ft  
Counted as living area: No

Heated: Yes  
Finished: No  
Enclosed: Yes  
Contiguous: Yes  
Permitted: Yes  
Wet space: No  
Addition: No  
Conversion: No

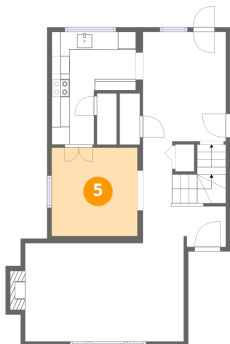
4 Floor 2 - Living Room



Dimensions: 17'8" x 10'11"  
Area: 194 sq. ft  
Counted as living area: Yes

Heated: Yes  
Finished: Yes  
Enclosed: Yes  
Contiguous: Yes  
Permitted: Yes  
Wet space: No  
Addition: No  
Conversion: No

5 Floor 2 - Dining Area

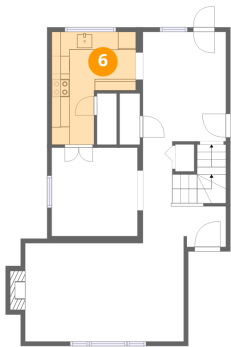


Dimensions: 9'7" x 9'10"  
Area: 94 sq. ft  
Counted as living area: Yes

Heated: Yes  
Finished: Yes  
Enclosed: Yes  
Contiguous: Yes  
Permitted: Yes  
Wet space: No  
Addition: No  
Conversion: No

825 Salaberry Street, Rothwell Heights - Beacon Hill North,  
Beaconwood, Gloucester, Ontario, Canada, K1J 6Y5

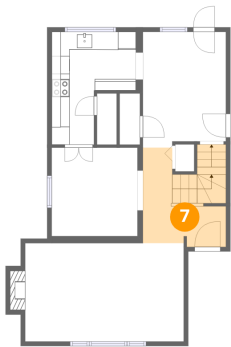
6 Floor 2 - Kitchen



Dimensions: 9'4" x 12'7"  
Area: 117 sq. ft  
Counted as living area: Yes

Heated: Yes  
Finished: Yes  
Enclosed: Yes  
Contiguous: Yes  
Permitted: Yes  
Wet space: No  
Addition: No  
Conversion: No

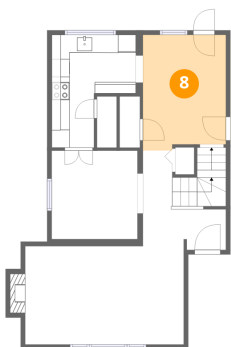
7 Floor 2 - Foyer



Dimensions: 9'3" x 10'7"  
Area: 98 sq. ft  
Counted as living area: Yes

Heated: Yes  
Finished: Yes  
Enclosed: Yes  
Contiguous: Yes  
Permitted: Yes  
Wet space: No  
Addition: No  
Conversion: No

8 Floor 2 - Room

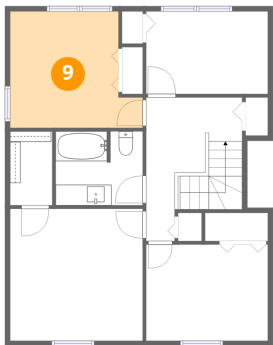


Dimensions: 9'3" x 12'11"  
Area: 119 sq. ft  
Counted as living area: Yes

Heated: Yes  
Finished: Yes  
Enclosed: Yes  
Contiguous: Yes  
Permitted: Yes  
Wet space: No  
Addition: No  
Conversion: No

825 Salaberry Street, Rothwell Heights - Beacon Hill North,  
Beaconwood, Gloucester, Ontario, Canada, K1J 6Y5

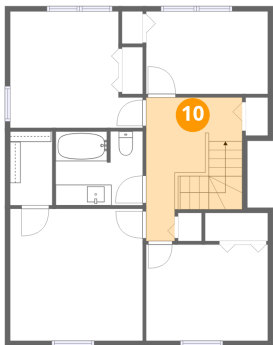
9 Floor 3 - Bedroom



Dimensions: 12'9" x 11'3"  
Area: 143 sq. ft  
Counted as living area: Yes

Heated: Yes  
Finished: Yes  
Enclosed: Yes  
Contiguous: Yes  
Permitted: Yes  
Wet space: No  
Addition: No  
Conversion: No

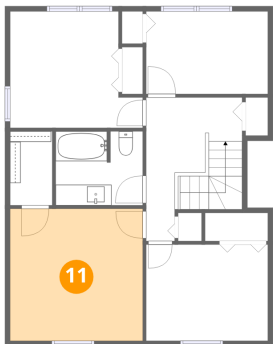
10 Floor 3 - Hall



Dimensions: 9'3" x 13'10"  
Area: 128 sq. ft  
Counted as living area: Yes

Heated: Yes  
Finished: Yes  
Enclosed: Yes  
Contiguous: Yes  
Permitted: Yes  
Wet space: No  
Addition: No  
Conversion: No

11 Floor 3 - Primary Bedroom



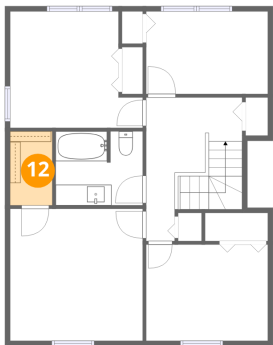
Dimensions: 12'9" x 12'9"  
Area: 163 sq. ft  
Counted as living area: Yes

Heated: Yes  
Finished: Yes  
Enclosed: Yes  
Contiguous: Yes  
Permitted: Yes  
Wet space: No  
Addition: No  
Conversion: No



825 Salaberry Street, Rothwell Heights - Beacon Hill North,  
Beaconwood, Gloucester, Ontario, Canada, K1J 6Y5

12 Floor 3 - W.I.C.



Dimensions: 4'1" x 7'2"  
Area: 29 sq. ft  
Counted as living area: Yes

Heated: Yes  
Finished: Yes  
Enclosed: Yes  
Contiguous: Yes  
Permitted: Yes  
Wet space: No  
Addition: No  
Conversion: No

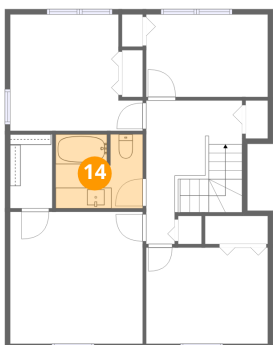
13 Floor 3 - Bedroom



Dimensions: 11'9" x 8'0"  
Area: 93 sq. ft  
Counted as living area: Yes

Heated: Yes  
Finished: Yes  
Enclosed: Yes  
Contiguous: Yes  
Permitted: Yes  
Wet space: No  
Addition: No  
Conversion: No

14 Floor 3 - Bath

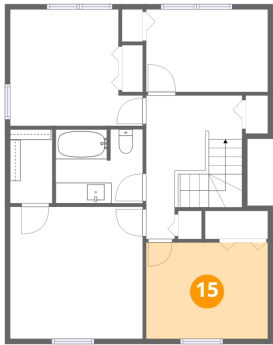


Dimensions: 8'5" x 7'2"  
Area: 60 sq. ft  
Counted as living area: Yes

Heated: Yes  
Finished: Yes  
Enclosed: Yes  
Contiguous: Yes  
Permitted: Yes  
Wet space: Yes  
Addition: No  
Conversion: No

825 Salaberry Street, Rothwell Heights - Beacon Hill North,  
Beaconwood, Gloucester, Ontario, Canada, K1J 6Y5

**15** Floor 3 - Bedroom



Dimensions: 11'9" x 9'3"  
Area: 109 sq. ft  
Counted as living area: Yes

Heated: Yes  
Finished: Yes  
Enclosed: Yes  
Contiguous: Yes  
Permitted: Yes  
Wet space: No  
Addition: No  
Conversion: No