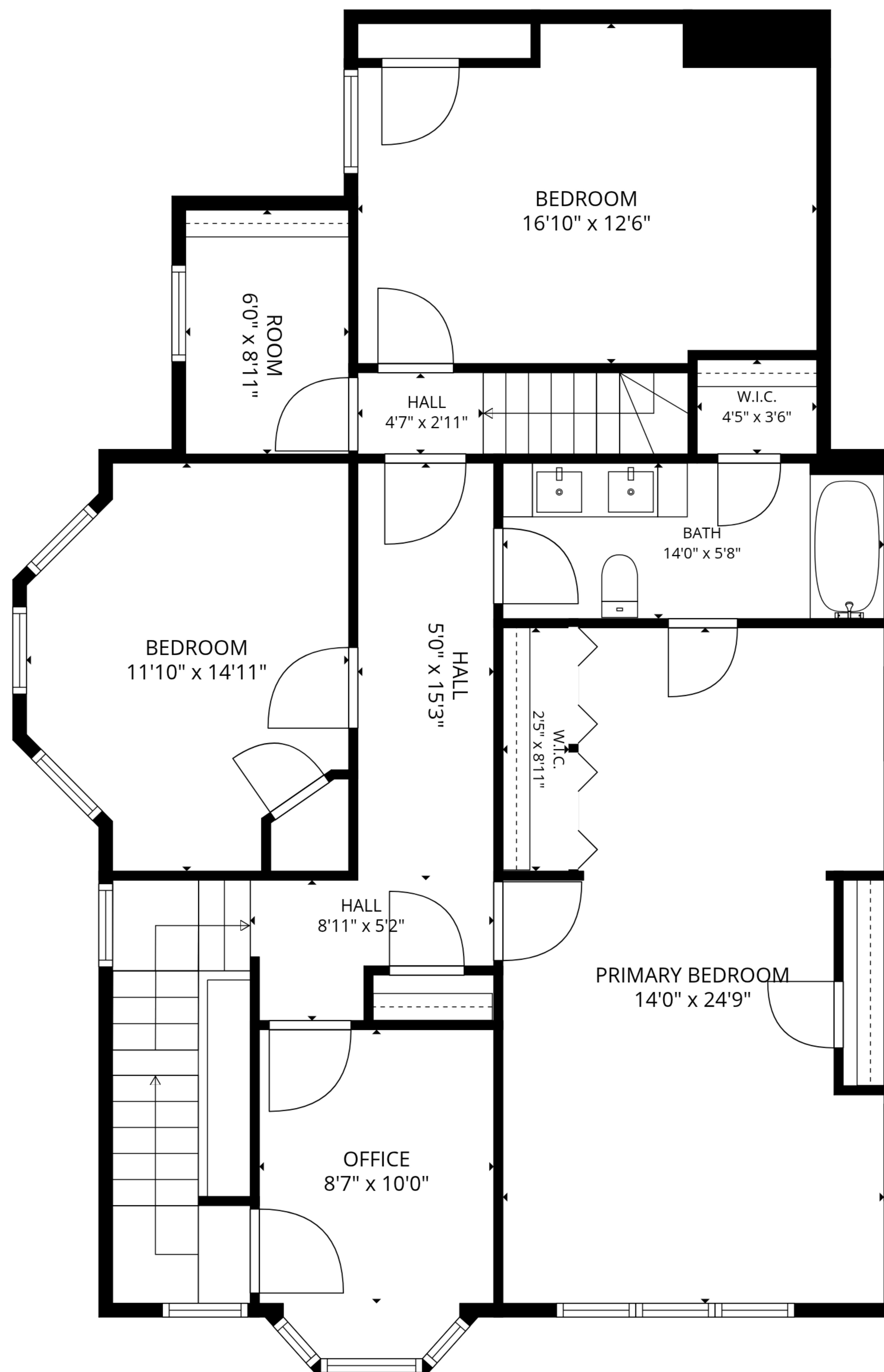


TOTAL: 2849 sq. ft

1st floor: 1267 sq. ft, 2nd floor: 1228 sq. ft, 3rd floor: 354 sq. ft

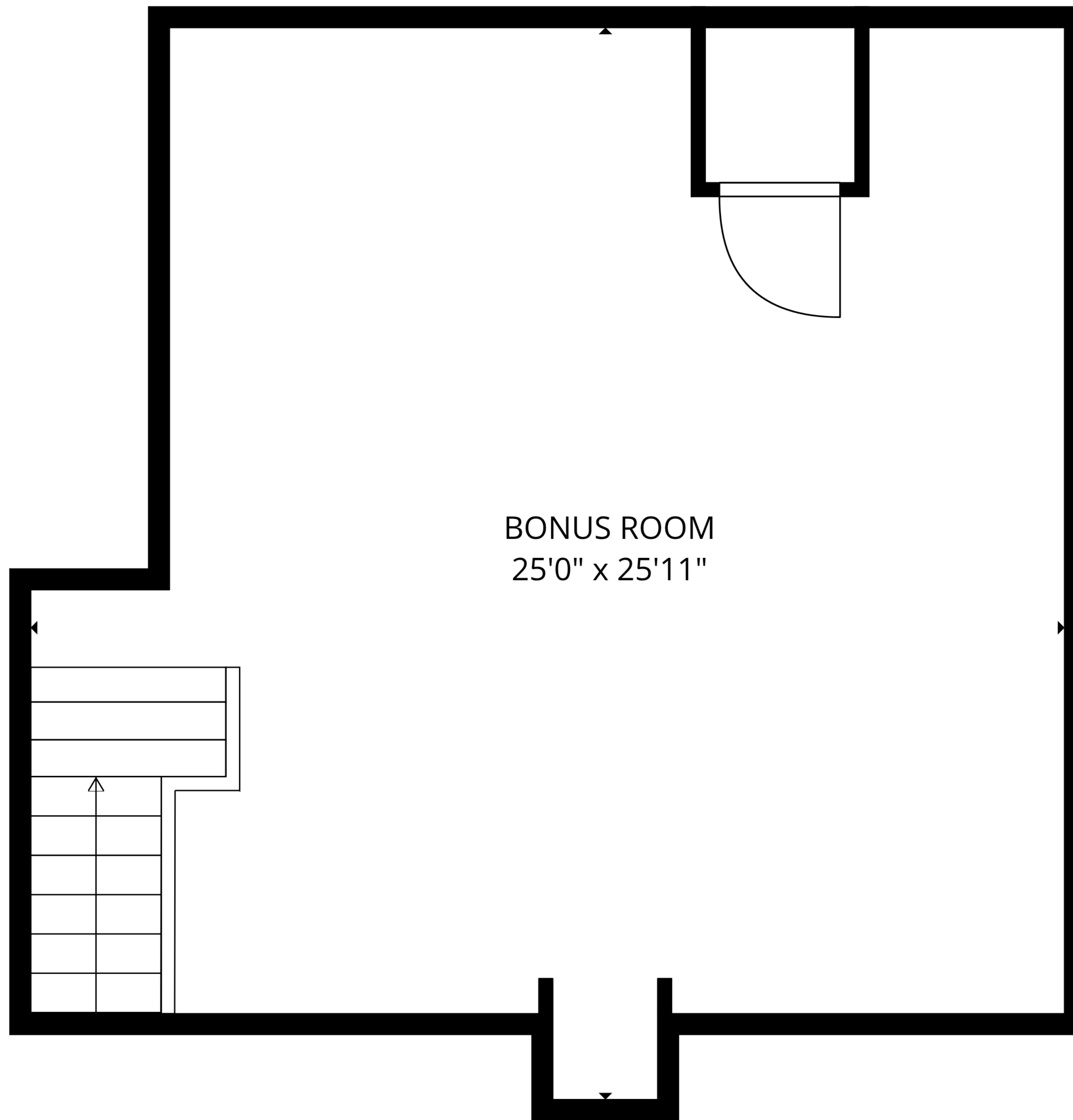
EXCLUDED AREAS: PORCH: 221 sq. ft, DECK: 372 sq. ft, BAY WINDOW: 12 sq. ft,
 LOW CEILING: 199 sq. ft, WALLS: 208 sq. ft



TOTAL: 2849 sq. ft

1st floor: 1267 sq. ft, 2nd floor: 1228 sq. ft, 3rd floor: 354 sq. ft

EXCLUDED AREAS: PORCH: 221 sq. ft, DECK: 372 sq. ft, BAY WINDOW: 12 sq. ft,
LOW CEILING: 199 sq. ft, WALLS: 208 sq. ft

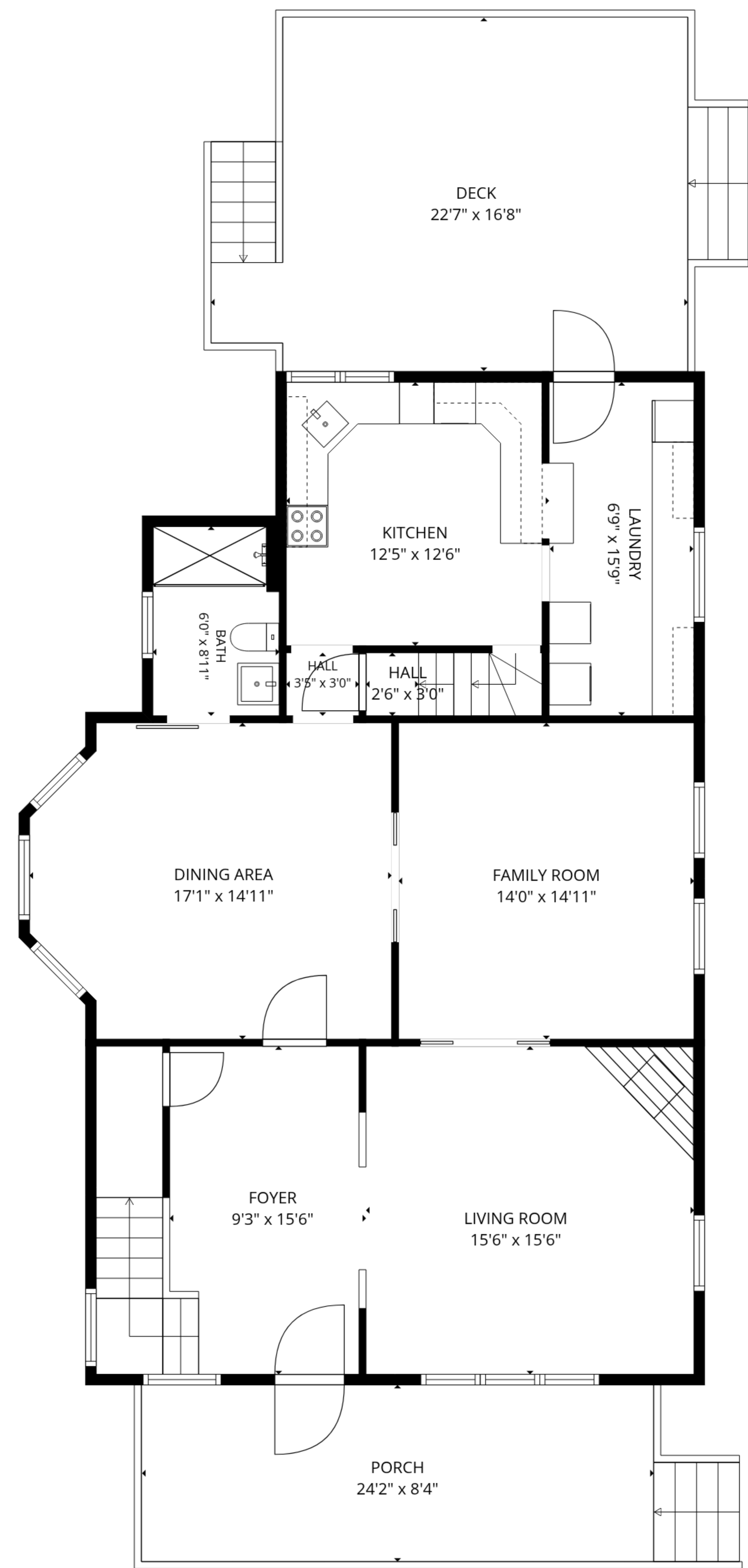


BONUS ROOM
25'0" x 25'11"

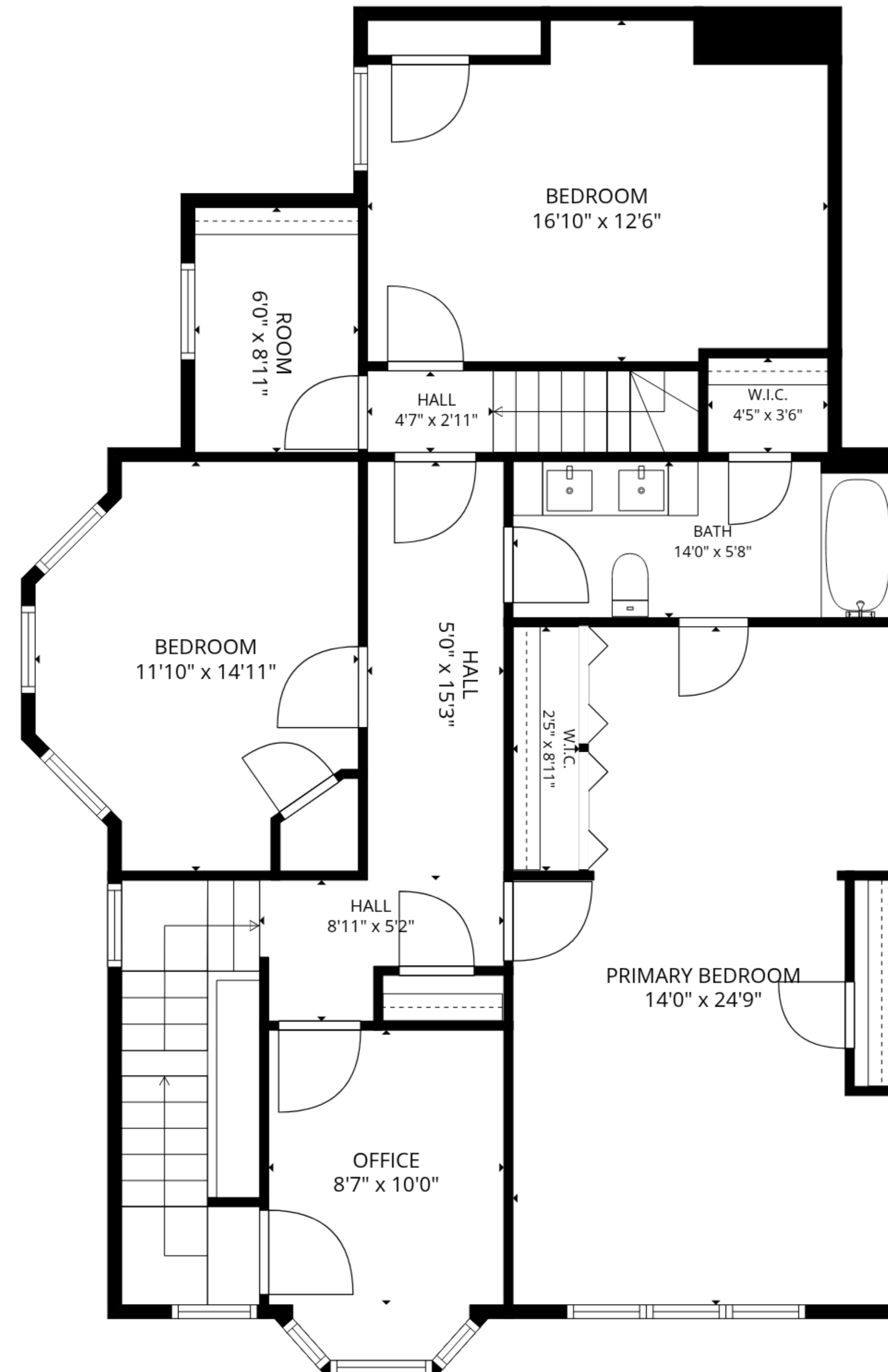
TOTAL: 2849 sq. ft

1st floor: 1267 sq. ft, 2nd floor: 1228 sq. ft, 3rd floor: 354 sq. ft

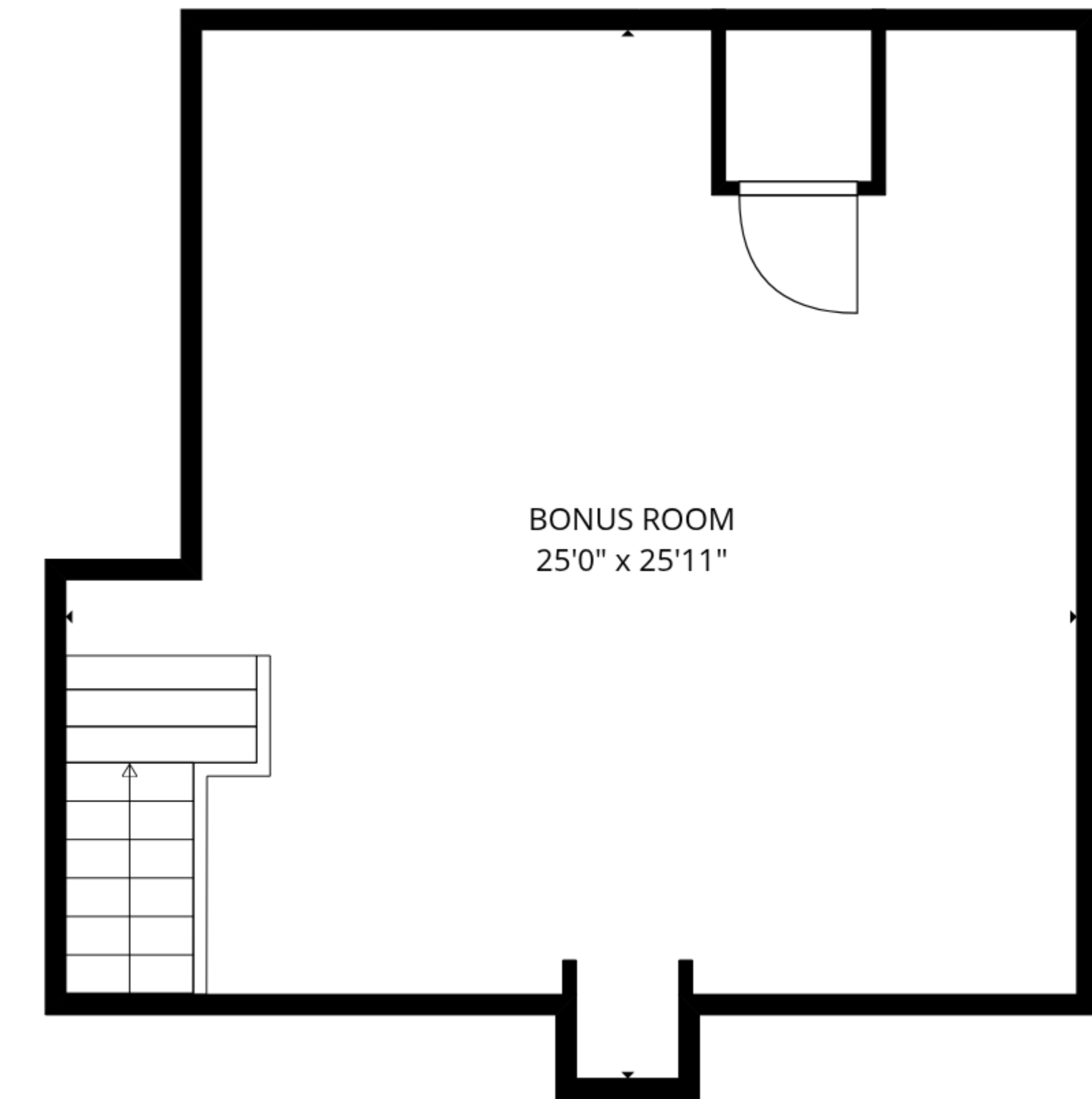
EXCLUDED AREAS: PORCH: 221 sq. ft, DECK: 372 sq. ft, BAY WINDOW: 12 sq. ft,
LOW CEILING: 199 sq. ft, WALLS: 208 sq. ft



1st floor



2nd floor



3rd floor

TOTAL: 2849 sq. ft

1st floor: 1267 sq. ft, 2nd floor: 1228 sq. ft, 3rd floor: 354 sq. ft

EXCLUDED AREAS: PORCH: 221 sq. ft, DECK: 372 sq. ft, BAY WINDOW: 12 sq. ft,
LOW CEILING: 199 sq. ft, WALLS: 208 sq. ft