

4936 Cove Valley Drive Southeast, Owens Cross Roads, Madison County, Alabama, United States, 35763

Gross Living Area: 3215 sq. ft

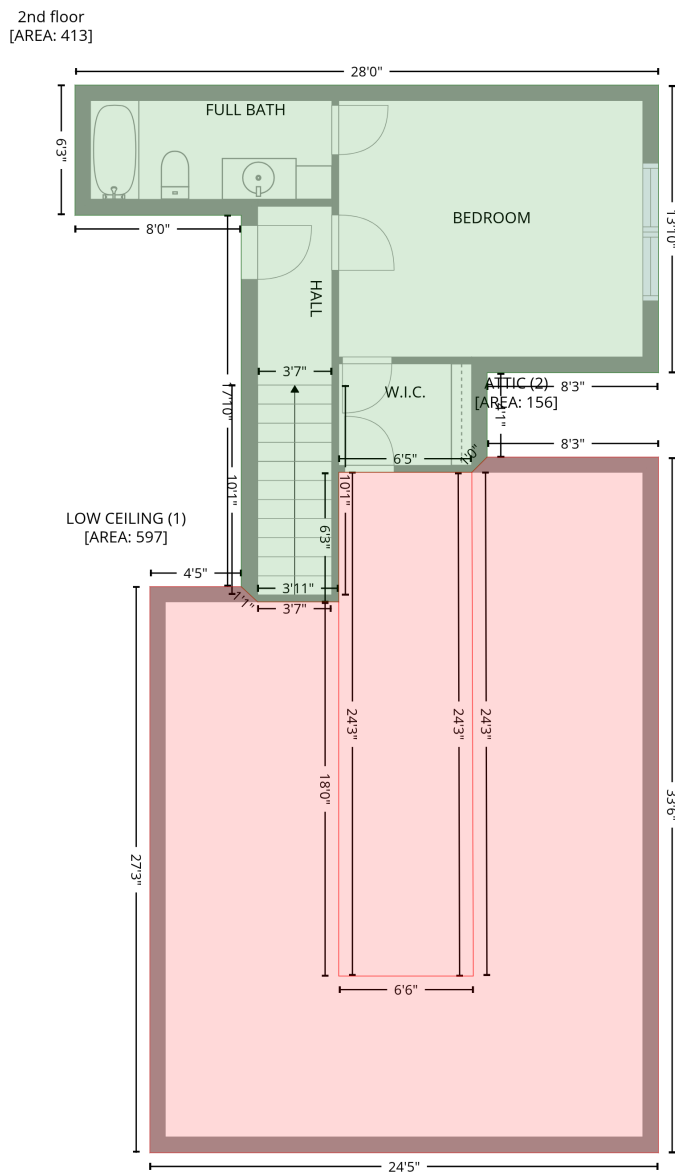
Level 1

Space	Area (sq. ft)	Calculation <small>Coordinate Polygon Area Algorithm using inches</small>
GARAGE (Non-living area)	549	$-\left((731.4 + 731.4) * (635.9 - 900.3) + (731.4 + 595.4) * (900.3 - 900.3) + (595.4 + 595.4) * (900.3 - 910.2) + (595.4 + 438.2) * (910.2 - 910.2) + (438.2 + 438.2) * (910.2 - 635.9) + (438.2 + 731.4) * (635.9 - 635.9)\right) * 0.5 * 0.00694$
PORCH (Non-living area)	24	$-\left((282.7 + 282.7) * (586.9 - 635.9) + (282.7 + 213.3) * (635.9 - 635.9) + (213.3 + 213.3) * (635.9 - 586.9) + (213.3 + 282.7) * (586.9 - 586.9)\right) * 0.5 * 0.00694$
PATIO (Non-living area)	297	$-\left((533.9 + 533.9) * (19.1 - 91.5) + (533.9 + 445.8) * (91.5 - 91.5) + (445.8 + 394.8) * (91.5 - 142) + (394.8 + 394.8) * (142 - 193.5) + (394.8 + 214.2) * (193.5 - 193.5) + (214.2 + 214.2) * (193.5 - 19.9) + (214.2 + 533.9) * (19.9 - 19.1)\right) * 0.5 * 0.00694$
FIREPLACE (Non-living area)	13	$-\left((669.8 + 669.8) * (-4.8 - 19.1) + (669.8 + 593.4) * (19.1 - 19.1) + (593.4 + 593.4) * (19.1 - -4.8) + (593.4 + 669.8) * (-4.8 - -4.8)\right) * 0.5 * 0.00694$

4936 Cove Valley Drive Southeast, Owens Cross Roads, Madison County, Alabama, United States, 35763

Gross Living Area: 3215 sq. ft

Level 2



Space	Area (sq. ft)	Calculation
2nd floor (Living area)	413	Coordinate Polygon Area Algorithm using inches $-((731.2 + 731.2) * (283.9 - 450) + (731.2 + 632.4) * (450 - 450) + (632.4 + 632.4) * (450 - 498.7) + (632.4 + 623.6) * (498.7 - 507.4) + (623.6 + 546.9) * (507.4 - 507.4) + (546.9 + 546.9) * (507.4 - 582.3) + (546.9 + 500.1) * (582.3 - 582.3) + (500.1 + 490.7) * (582.3 - 573.5) + (490.7 + 490.7) * (573.5 - 359.1) + (490.7 + 394.9) * (359.1 - 359.1) + (394.9 + 394.9) * (359.1 - 283.9) + (394.9 + 731.2) * (283.9 - 283.9)) * 0.5 * 0.00694$

4936 Cove Valley Drive Southeast, Owens Cross Roads, Madison County, Alabama, United States, 35763

Gross Living Area: 3215 sq. ft

Level 2

Space	Area (sq. ft)	Calculation <small>Coordinate Polygon Area Algorithm using inches</small>
LOW CEILING (Non-living area)	597	$-\left((731.2 + 731.2) * (498.7 - 900.2) + (731.2 + 438) * (900.2 - 900.2) + (438 + 438) * (900.2 - 573.5) + (438 + 490.7) * (573.5 - 573.5) + (490.7 + 500.1) * (573.5 - 582.3) + (500.1 + 546.9) * (582.3 - 582.3) + (546.9 + 546.9) * (582.3 - 798.2) + (546.9 + 624.4) * (798.2 - 798.2) + (624.4 + 623.6) * (798.2 - 507.4) + (623.6 + 632.4) * (507.4 - 498.7) + (632.4 + 731.2) * (498.7 - 498.7)\right) * 0.5 * 0.00694$
ATTIC (Non-living area)	156	$-\left((623.6 + 624.4) * (507.4 - 798.2) + (624.4 + 546.9) * (798.2 - 798.2) + (546.9 + 546.9) * (798.2 - 507.4) + (546.9 + 623.6) * (507.4 - 507.4)\right) * 0.5 * 0.00694$