

# Home data report

## 748 N Rohde Ave, Hillside, IL, US



**Total Area: 1572 sq. ft**

Basement: 519 sq. ft, 1st Floor: 1053 sq. ft

Excluded: Basement 366 sq. ft, Laundry 150 sq. ft, Garage 205 sq. ft, Walls: 169 sq. ft

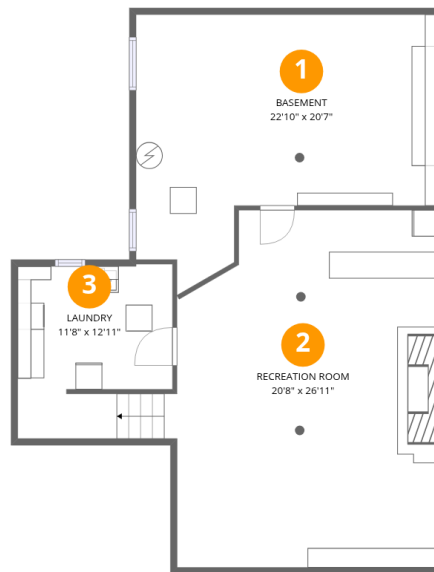
### Property summary

 **2** Floors

 **3** Bedrooms

 **1** Bathrooms

 **1** Garages



## Room dimensions

Floor 1 Below grade

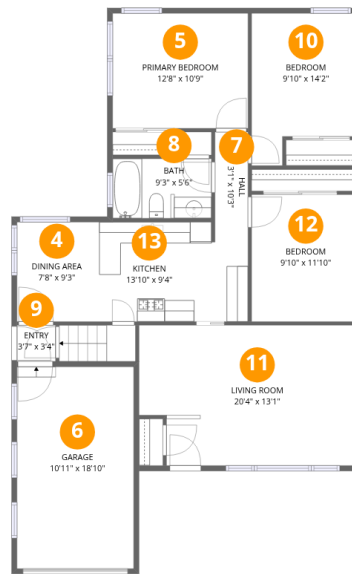
Total: 519 sqft

Excluded: 516 sqft

#		Dimensions	sqft	Counted as living area
1	Basement	22'10" x 20'7"	469 sq. ft	No
2	Recreation Room	20'8" x 26'11"	555 sq. ft	Yes
3	Laundry	11'8" x 12'11"	151 sq. ft	No

# Home data report

## 748 N Rohde Ave, Hillside, IL, US



### Room dimensions

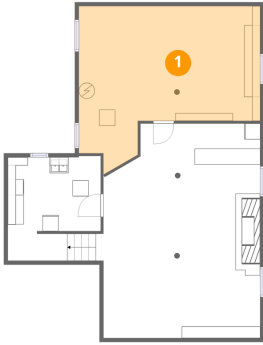
Floor 2

Total: 1053 sqft

Excluded: 205 sqft

#		Dimensions	sqft	Counted as living area
4	Dining Area	7'8" x 9'3"	71 sq. ft	Yes
5	Primary Bedroom	12'8" x 10'9"	135 sq. ft	Yes
6	Garage	10'11" x 18'10"	205 sq. ft	No
7	Hall	3'1" x 10'3"	32 sq. ft	Yes
8	Bath	9'3" x 5'6"	51 sq. ft	Yes
9	Entry	3'7" x 3'4"	12 sq. ft	Yes
10	Bedroom	9'10" x 14'2"	140 sq. ft	Yes
11	Living Room	20'4" x 13'1"	266 sq. ft	Yes
12	Bedroom	9'10" x 11'10"	116 sq. ft	Yes
13	Kitchen	13'10" x 9'4"	129 sq. ft	Yes

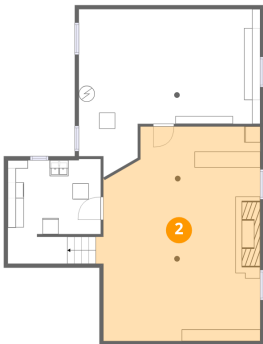
## 1 Floor 1 - Basement



Dimensions: 22'10" x 20'7"  
Area: 469 sq. ft  
Counted as living area: No

Heated: Yes  
Finished: No  
Enclosed: Yes  
Contiguous: Yes  
Permitted: Yes  
Wet space: No  
Addition: No  
Conversion: No

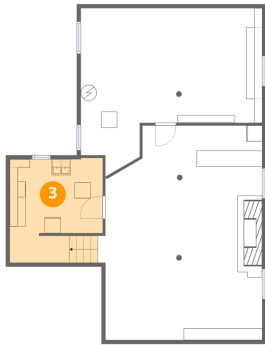
## 2 Floor 1 - Recreation Room



Dimensions: 20'8" x 26'11"  
Area: 555 sq. ft  
Counted as living area: No

Heated: Yes  
Finished: Yes  
Enclosed: Yes  
Contiguous: No  
Permitted: Yes  
Wet space: No  
Addition: No  
Conversion: No

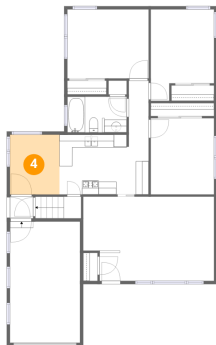
### 3 Floor 1 - Laundry



Dimensions: 11'8" x 12'11"  
Area: 151 sq. ft  
Counted as living area: No

Heated: Yes  
Finished: No  
Enclosed: Yes  
Contiguous: Yes  
Permitted: Yes  
Wet space: No  
Addition: No  
Conversion: No

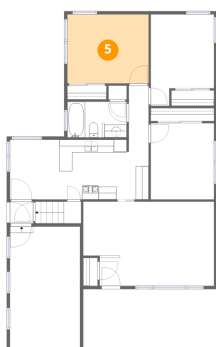
### 4 Floor 2 - Dining Area



Dimensions: 7'8" x 9'3"  
Area: 71 sq. ft  
Counted as living area: Yes

Heated: Yes  
Finished: Yes  
Enclosed: Yes  
Contiguous: Yes  
Permitted: Yes  
Wet space: No  
Addition: No  
Conversion: No

### 5 Floor 2 - Primary Bedroom



Dimensions: 12'8" x 10'9"  
Area: 135 sq. ft  
Counted as living area: Yes

Heated: Yes  
Finished: Yes  
Enclosed: Yes  
Contiguous: Yes  
Permitted: Yes  
Wet space: No  
Addition: No  
Conversion: No

## 6 Floor 2 - Garage



Dimensions: 10'11" x 18'10"

Area: 205 sq. ft

Counted as living area: No

Heated: No

Finished: No

Enclosed: Yes

Contiguous: Yes

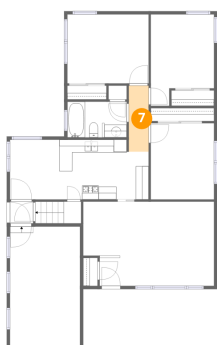
Permitted: Yes

Wet space: No

Addition: No

Conversion: No

## 7 Floor 2 - Hall



Dimensions: 3'1" x 10'3"

Area: 32 sq. ft

Counted as living area: Yes

Heated: Yes

Finished: Yes

Enclosed: Yes

Contiguous: Yes

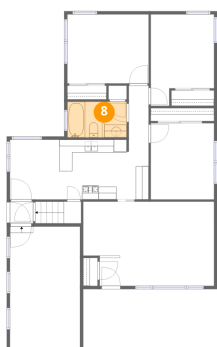
Permitted: Yes

Wet space: No

Addition: No

Conversion: No

## 8 Floor 2 - Bath



Dimensions: 9'3" x 5'6"

Area: 51 sq. ft

Counted as living area: Yes

Heated: Yes

Finished: Yes

Enclosed: Yes

Contiguous: Yes

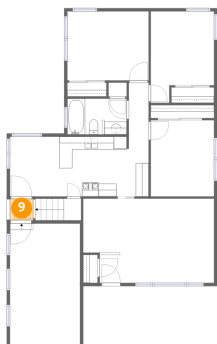
Permitted: Yes

Wet space: Yes

Addition: No

Conversion: No

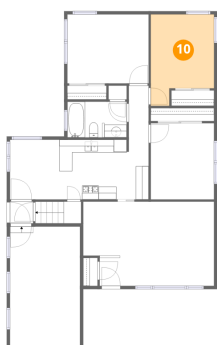
## 9 Floor 2 - Entry



Dimensions: 3'7" x 3'4"  
Area: 12 sq. ft  
Counted as living area: Yes

Heated: Yes  
Finished: Yes  
Enclosed: Yes  
Contiguous: Yes  
Permitted: Yes  
Wet space: No  
Addition: No  
Conversion: No

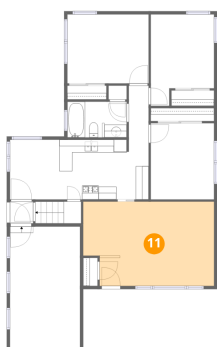
## 10 Floor 2 - Bedroom



Dimensions: 9'10" x 14'2"  
Area: 140 sq. ft  
Counted as living area: Yes

Heated: Yes  
Finished: Yes  
Enclosed: Yes  
Contiguous: Yes  
Permitted: Yes  
Wet space: No  
Addition: No  
Conversion: No

## 11 Floor 2 - Living Room



Dimensions: 20'4" x 13'1"  
Area: 266 sq. ft  
Counted as living area: Yes

Heated: Yes  
Finished: Yes  
Enclosed: Yes  
Contiguous: Yes  
Permitted: Yes  
Wet space: No  
Addition: No  
Conversion: No

**12** Floor 2 - Bedroom

---

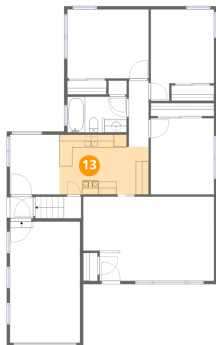


Dimensions: 9'10" x 11'10"  
Area: 116 sq. ft  
Counted as living area: Yes

Heated: Yes  
Finished: Yes  
Enclosed: Yes  
Contiguous: Yes  
Permitted: Yes  
Wet space: No  
Addition: No  
Conversion: No

**13** Floor 2 - Kitchen

---



Dimensions: 13'10" x 9'4"  
Area: 129 sq. ft  
Counted as living area: Yes

Heated: Yes  
Finished: Yes  
Enclosed: Yes  
Contiguous: Yes  
Permitted: Yes  
Wet space: No  
Addition: No  
Conversion: No