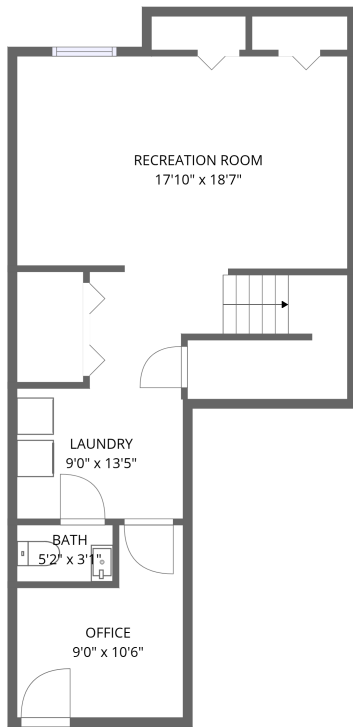
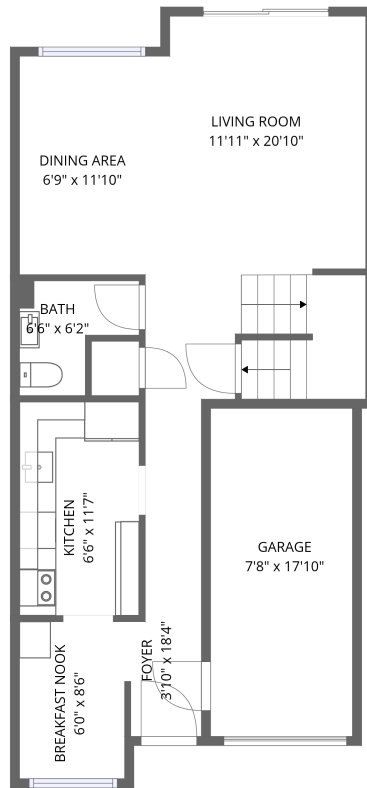


Home data report

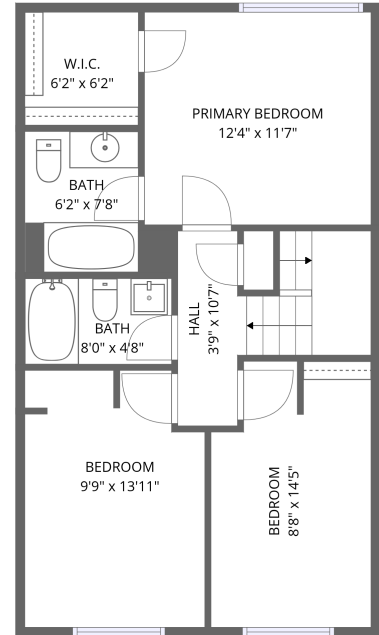
180 Highland Crescent, Kitchener, Ontario N2M 5K5, Canada, 10



1st floor



2nd floor



3rd floor

Total Area: 1708 sq. ft

1st Floor: 513 sq. ft, 2nd Floor: 567 sq. ft, 3rd Floor: 628 sq. ft

Excluded: Garage 137 sq. ft, Walls: 136 sq. ft

Property summary

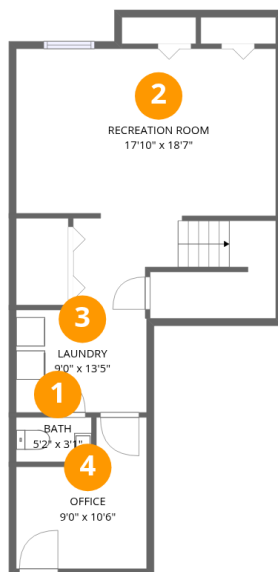


Home data report

180 Highland Crescent, Kitchener, Ontario N2M 5K5, Canada, 10

 **2**
Half baths

 **1**
Garages

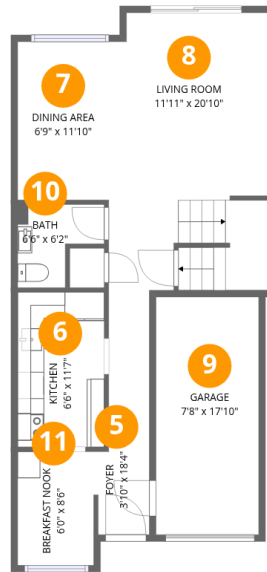


Room dimensions

Floor 1

Total:513sqft Excluded: 0sqft

#		Dimensions	sqft	Counted as living area
1	Bath	5'2" x 3'1"	16 sq. ft	Yes
2	Recreation Room	17'10" x 18'7"	243 sq. ft	Yes
3	Laundry	9'0" x 13'5"	96 sq. ft	Yes
4	Office	9'0" x 10'6"	75 sq. ft	Yes



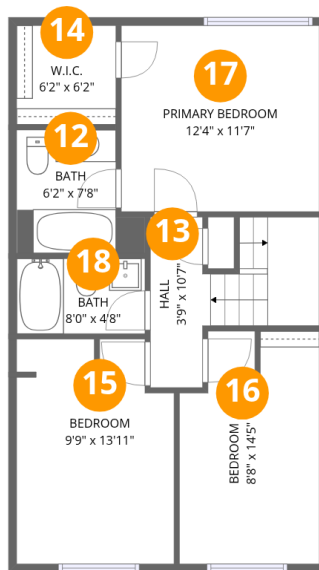
Room dimensions

Floor 2

Total:567sqft

Excluded: 137sqft

#		Dimensions	sqft	Counted as living area
5	Foyer	3'10" x 18'4"	61 sq. ft	Yes
6	Kitchen	6'6" x 11'7"	75 sq. ft	Yes
7	Dining Area	6'9" x 11'10"	81 sq. ft	Yes
8	Living Room	11'11" x 20'10"	231 sq. ft	Yes
9	Garage	7'8" x 17'10"	137 sq. ft	No
10	Bath	6'6" x 6'2"	31 sq. ft	Yes
11	Breakfast Nook	6'0" x 8'6"	50 sq. ft	Yes



Room dimensions

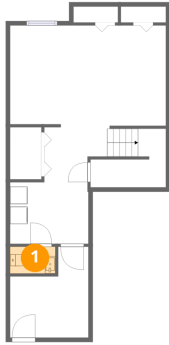
Floor 3

Total:628sqft

Excluded: 0sqft

#		Dimensions	sqft	Counted as living area
12	Bath	6'2" x 7'8"	51 sq. ft	Yes
13	Hall	3'9" x 10'7"	75 sq. ft	Yes
14	W.I.C.	6'2" x 6'2"	38 sq. ft	Yes
15	Bedroom	9'9" x 13'11"	129 sq. ft	Yes
16	Bedroom	8'8" x 14'5"	118 sq. ft	Yes
17	Primary Bedroom	12'4" x 11'7"	142 sq. ft	Yes
18	Bath	8'0" x 4'8"	37 sq. ft	Yes

1 Floor 1 - Bath



Dimensions: 5'2" x 3'1"
Area: 16 sq. ft
Counted as living area: Yes

Heated: Yes
Finished: Yes
Enclosed: Yes
Contiguous: Yes
Permitted: Yes
Wet space: Yes
Addition: No
Conversion: No

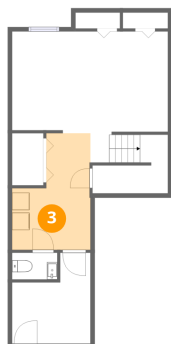
2 Floor 1 - Recreation Room



Dimensions: 17'10" x 18'7"
Area: 243 sq. ft
Counted as living area: Yes

Heated: Yes
Finished: Yes
Enclosed: Yes
Contiguous: Yes
Permitted: Yes
Wet space: No
Addition: No
Conversion: No

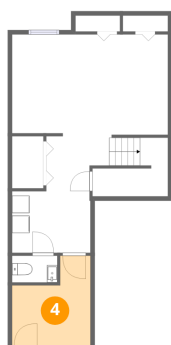
3 Floor 1 - Laundry



Dimensions: 9'0" x 13'5"
Area: 96 sq. ft
Counted as living area: Yes

Heated: Yes
Finished: Yes
Enclosed: Yes
Contiguous: Yes
Permitted: Yes
Wet space: No
Addition: No
Conversion: No

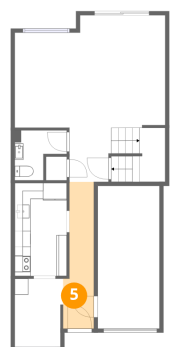
4 Floor 1 - Office



Dimensions: 9'0" x 10'6"
Area: 75 sq. ft
Counted as living area: Yes

Heated: Yes
Finished: Yes
Enclosed: Yes
Contiguous: Yes
Permitted: Yes
Wet space: No
Addition: No
Conversion: No

5 Floor 2 - Foyer



Dimensions: 3'10" x 18'4"
Area: 61 sq. ft
Counted as living area: Yes

Heated: Yes
Finished: Yes
Enclosed: Yes
Contiguous: Yes
Permitted: Yes
Wet space: No
Addition: No
Conversion: No

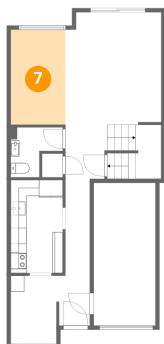
6 Floor 2 - Kitchen



Dimensions: 6'6" x 11'7"
Area: 75 sq. ft
Counted as living area: Yes

Heated: Yes
Finished: Yes
Enclosed: Yes
Contiguous: Yes
Permitted: Yes
Wet space: No
Addition: No
Conversion: No

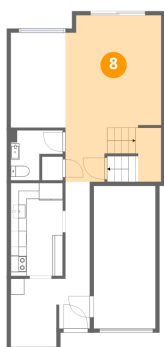
7 Floor 2 - Dining Area



Dimensions: 6'9" x 11'10"
Area: 81 sq. ft
Counted as living area: Yes

Heated: Yes
Finished: Yes
Enclosed: Yes
Contiguous: Yes
Permitted: Yes
Wet space: No
Addition: No
Conversion: No

8 Floor 2 - Living Room



Dimensions: 11'11" x 20'10"
Area: 231 sq. ft
Counted as living area: Yes

Heated: Yes
Finished: Yes
Enclosed: Yes
Contiguous: Yes
Permitted: Yes
Wet space: No
Addition: No
Conversion: No

9 Floor 2 - Garage



Dimensions: 7'8" x 17'10"
Area: 137 sq. ft
Counted as living area: No

Heated: No
Finished: No
Enclosed: Yes
Contiguous: Yes
Permitted: Yes
Wet space: No
Addition: No
Conversion: No

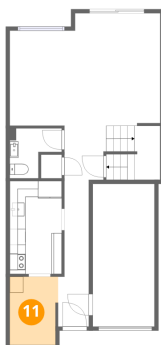
10 Floor 2 - Bath



Dimensions: 6'6" x 6'2"
Area: 31 sq. ft
Counted as living area: Yes

Heated: Yes
Finished: Yes
Enclosed: Yes
Contiguous: Yes
Permitted: Yes
Wet space: Yes
Addition: No
Conversion: No

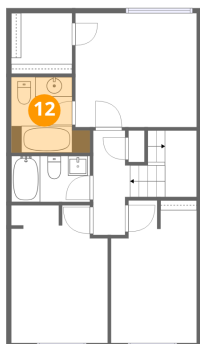
11 Floor 2 - Breakfast Nook



Dimensions: 6'0" x 8'6"
Area: 50 sq. ft
Counted as living area: Yes

Heated: Yes
Finished: Yes
Enclosed: Yes
Contiguous: Yes
Permitted: Yes
Wet space: No
Addition: No
Conversion: No

12 Floor 3 - Bath



Dimensions: 6'2" x 7'8"
Area: 51 sq. ft
Counted as living area: Yes

Heated: Yes
Finished: Yes
Enclosed: Yes
Contiguous: Yes
Permitted: Yes
Wet space: Yes
Addition: No
Conversion: No

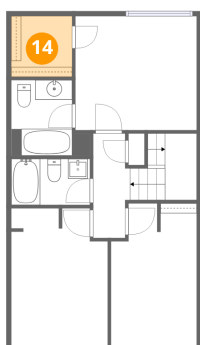
13 Floor 3 - Hall



Dimensions: 3'9" x 10'7"
Area: 75 sq. ft
Counted as living area: Yes

Heated: Yes
Finished: Yes
Enclosed: Yes
Contiguous: Yes
Permitted: Yes
Wet space: No
Addition: No
Conversion: No

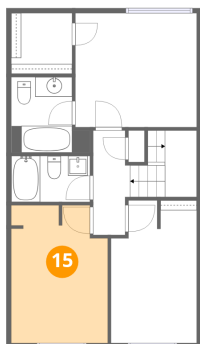
14 Floor 3 - W.I.C.



Dimensions: 6'2" x 6'2"
Area: 38 sq. ft
Counted as living area: Yes

Heated: Yes
Finished: Yes
Enclosed: Yes
Contiguous: Yes
Permitted: Yes
Wet space: No
Addition: No
Conversion: No

15 Floor 3 - Bedroom



Dimensions: 9'9" x 13'11"
Area: 129 sq. ft
Counted as living area: Yes

Heated: Yes
Finished: Yes
Enclosed: Yes
Contiguous: Yes
Permitted: Yes
Wet space: No
Addition: No
Conversion: No

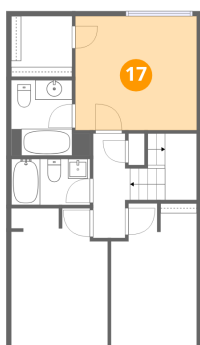
16 Floor 3 - Bedroom



Dimensions: 8'8" x 14'5"
Area: 118 sq. ft
Counted as living area: Yes

Heated: Yes
Finished: Yes
Enclosed: Yes
Contiguous: Yes
Permitted: Yes
Wet space: No
Addition: No
Conversion: No

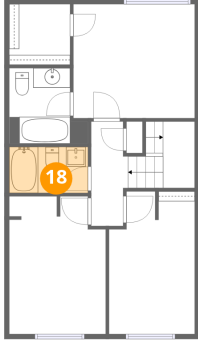
17 Floor 3 - Primary Bedroom



Dimensions: 12'4" x 11'7"
Area: 142 sq. ft
Counted as living area: Yes

Heated: Yes
Finished: Yes
Enclosed: Yes
Contiguous: Yes
Permitted: Yes
Wet space: No
Addition: No
Conversion: No

18 Floor 3 - Bath



Dimensions: 8'0" x 4'8"
Area: 37 sq. ft
Counted as living area: Yes

Heated: Yes
Finished: Yes
Enclosed: Yes
Contiguous: Yes
Permitted: Yes
Wet space: Yes
Addition: No
Conversion: No