

# 1907 Spring Bloom Dr, Windsor, CO, US



**Total Area: 5324 sq. ft**

Basement: 1719 sq. ft, 1st Floor: 3605 sq. ft

Excluded: Basement 824 sq. ft, Porch 396 sq. ft, Deck 765 sq. ft, Patio 453 sq. ft, Open to below 40 sq. ft, Walls: 327 sq. ft

## Property summary



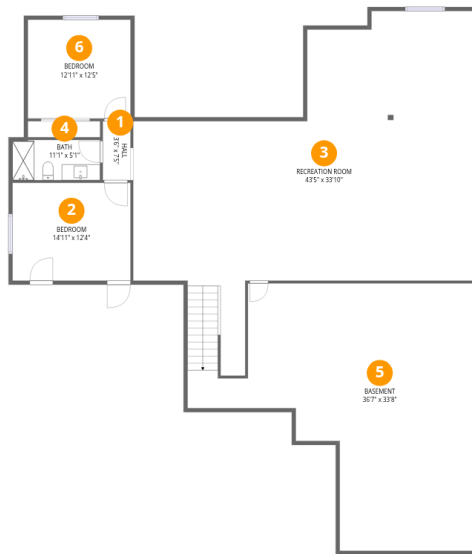
Home data report

# 1907 Spring Bloom Dr,Windsor,CO,US

 **1**  
Half baths

 **1**  
Garages

# 1907 Spring Bloom Dr,Windsor,CO,US



## Room dimensions

Floor 1 Below grade

Total:1719sqft

Excluded: 824sqft

#		Dimensions	sqft	Counted as living area
1	Hall	3'6" x 7'5"	26 sq. ft	Yes
2	Bedroom	14'11" x 12'4"	184 sq. ft	Yes
3	Recreation Room	43'5" x 33'10"	1235 sq. ft	Yes
4	Bath	11'1" x 5'1"	56 sq. ft	Yes
5	Basement	36'7" x 33'8"	824 sq. ft	No
6	Bedroom	12'11" x 12'5"	161 sq. ft	Yes

# 1907 Spring Bloom Dr,Windsor,CO,US



## Room dimensions

Floor 2

Total:3605sqft

Excluded: 1654sqft

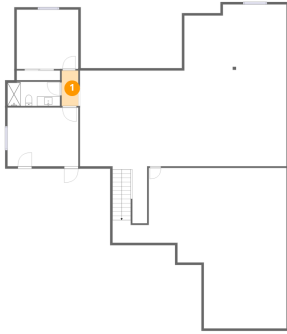
#		Dimensions	sqft	Counted as living area
7	Hall	11'4" x 5'10"	52 sq. ft	Yes
8	Sitting Room	12'0" x 17'1"	160 sq. ft	Yes
9	Patio	25'1" x 18'1"	454 sq. ft	No
10	Bath	4'11" x 4'9"	23 sq. ft	Yes
11	Living Room	21'4" x 21'11"	469 sq. ft	Yes
12	Bath	5'4" x 7'9"	41 sq. ft	Yes
13	Foyer	7'5" x 15'5"	188 sq. ft	Yes
14	Hall	11'4" x 5'4"	60 sq. ft	Yes
15	Primary Bath	14'4" x 12'5"	142 sq. ft	Yes
16	Open To Below	3'6" x 11'4"	40 sq. ft	No
17	Pantry	8'0" x 7'6"	56 sq. ft	Yes

Home data report

1907 Spring Bloom Dr,Windsor,CO,US

#		Dimensions	sqft	Counted as living area
18	Bedroom	11'0" x 11'0"	120 sq. ft	Yes
19	Garage	23'6" x 31'0"	740 sq. ft	Yes
20	Kitchen	15'6" x 23'4"	348 sq. ft	Yes
21	Primary Bedroom	15'3" x 18'2"	277 sq. ft	Yes
22	Hall	7'9" x 4'0"	31 sq. ft	Yes
23	Bath	8'4" x 5'1"	42 sq. ft	Yes
24	W.I.C.	5'4" x 5'5"	29 sq. ft	Yes
25	Bedroom	13'7" x 13'6"	183 sq. ft	Yes
26	Bath	5'0" x 3'4"	16 sq. ft	Yes
27	Deck	29'8" x 28'3"	765 sq. ft	No
28	Porch	19'2" x 21'11"	396 sq. ft	No
29	Room	7'9" x 11'1"	87 sq. ft	Yes
30	Laundry	12'0" x 6'5"	77 sq. ft	Yes
31	Dining Area	14'0" x 12'7"	175 sq. ft	Yes
32	W.I.C.	10'11" x 16'9"	149 sq. ft	Yes

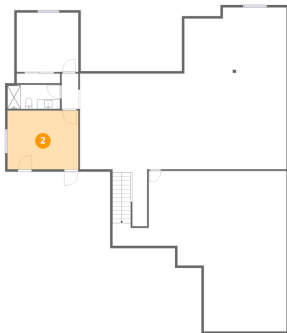
## 1 Floor 1 - Hall



Dimensions: 3'6" x 7'5"  
Area: 26 sq. ft  
Counted as living area: Yes

Heated: Yes  
Finished: Yes  
Enclosed: Yes  
Contiguous: Yes  
Permitted: Yes  
Wet space: No  
Addition: No  
Conversion: No

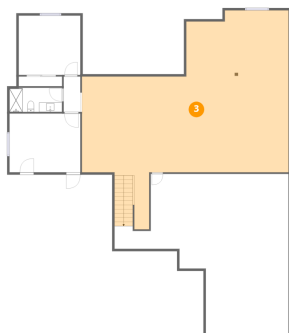
## 2 Floor 1 - Bedroom



Dimensions: 14'11" x 12'4"  
Area: 184 sq. ft  
Counted as living area: Yes

Heated: Yes  
Finished: Yes  
Enclosed: Yes  
Contiguous: Yes  
Permitted: Yes  
Wet space: No  
Addition: No  
Conversion: No

### 3 Floor 1 - Recreation Room



Dimensions: 43'5" x 33'10"  
Area: 1235 sq. ft  
Counted as living area: Yes

Heated: Yes  
Finished: Yes  
Enclosed: Yes  
Contiguous: Yes  
Permitted: Yes  
Wet space: No  
Addition: No  
Conversion: No

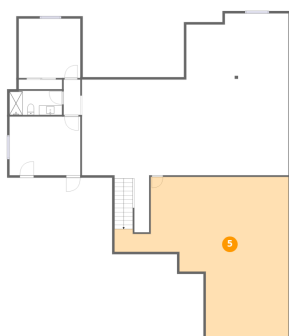
### 4 Floor 1 - Bath



Dimensions: 11'1" x 5'1"  
Area: 56 sq. ft  
Counted as living area: Yes

Heated: Yes  
Finished: Yes  
Enclosed: Yes  
Contiguous: Yes  
Permitted: Yes  
Wet space: Yes  
Addition: No  
Conversion: No

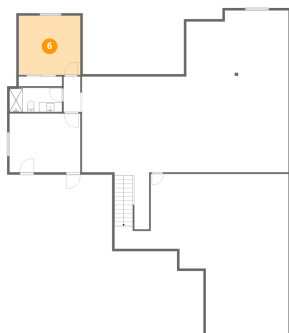
### 5 Floor 1 - Basement



Dimensions: 36'7" x 33'8"  
Area: 824 sq. ft  
Counted as living area: No

Heated: Yes  
Finished: No  
Enclosed: Yes  
Contiguous: Yes  
Permitted: Yes  
Wet space: No  
Addition: No  
Conversion: No

## 6 Floor 1 - Bedroom



Dimensions: 12'11" x 12'5"  
Area: 161 sq. ft  
Counted as living area: Yes

Heated: Yes  
Finished: Yes  
Enclosed: Yes  
Contiguous: Yes  
Permitted: Yes  
Wet space: No  
Addition: No  
Conversion: No

## 7 Floor 2 - Hall



Dimensions: 11'4" x 5'10"  
Area: 52 sq. ft  
Counted as living area: Yes

Heated: Yes  
Finished: Yes  
Enclosed: Yes  
Contiguous: Yes  
Permitted: Yes  
Wet space: No  
Addition: No  
Conversion: No

## 8 Floor 2 - Sitting Room



Dimensions: 12'0" x 17'1"  
Area: 160 sq. ft  
Counted as living area: Yes

Heated: Yes  
Finished: Yes  
Enclosed: Yes  
Contiguous: Yes  
Permitted: Yes  
Wet space: No  
Addition: No  
Conversion: No

## 9 Floor 2 - Patio



Dimensions: 25'1" x 18'1"  
Area: 454 sq. ft  
Counted as living area: No

Heated: No  
Finished: No  
Enclosed: No  
Contiguous: Yes  
Permitted: Yes  
Wet space: No  
Addition: No  
Conversion: No

## 10 Floor 2 - Bath



Dimensions: 4'11" x 4'9"  
Area: 23 sq. ft  
Counted as living area: Yes

Heated: Yes  
Finished: Yes  
Enclosed: Yes  
Contiguous: Yes  
Permitted: Yes  
Wet space: Yes  
Addition: No  
Conversion: No

## 11 Floor 2 - Living Room



Dimensions: 21'4" x 21'11"  
Area: 469 sq. ft  
Counted as living area: Yes

Heated: Yes  
Finished: Yes  
Enclosed: Yes  
Contiguous: Yes  
Permitted: Yes  
Wet space: No  
Addition: No  
Conversion: No

**12** Floor 2 - Bath

---



Dimensions: 5'4" x 7'9"  
Area: 41 sq. ft  
Counted as living area: Yes

Heated: Yes  
Finished: Yes  
Enclosed: Yes  
Contiguous: Yes  
Permitted: Yes  
Wet space: Yes  
Addition: No  
Conversion: No

**13** Floor 2 - Foyer

---



Dimensions: 7'5" x 15'5"  
Area: 188 sq. ft  
Counted as living area: Yes

Heated: Yes  
Finished: Yes  
Enclosed: Yes  
Contiguous: Yes  
Permitted: Yes  
Wet space: No  
Addition: No  
Conversion: No

**14** Floor 2 - Hall

---



Dimensions: 11'4" x 5'4"  
Area: 60 sq. ft  
Counted as living area: Yes

Heated: Yes  
Finished: Yes  
Enclosed: Yes  
Contiguous: Yes  
Permitted: Yes  
Wet space: No  
Addition: No  
Conversion: No

### 15 Floor 2 - Primary Bath

---



Dimensions: 14'4" x 12'5"  
Area: 142 sq. ft  
Counted as living area: Yes

Heated: Yes  
Finished: Yes  
Enclosed: Yes  
Contiguous: Yes  
Permitted: Yes  
Wet space: Yes  
Addition: No  
Conversion: No

### 16 Floor 2 - Open To Below

---



Dimensions: 3'6" x 11'4"  
Area: 40 sq. ft  
Counted as living area: No

Heated: No  
Finished: No  
Enclosed: No  
Contiguous: Yes  
Permitted: No  
Wet space: No  
Addition: No  
Conversion: No

### 17 Floor 2 - Pantry

---



Dimensions: 8'0" x 7'6"  
Area: 56 sq. ft  
Counted as living area: Yes

Heated: Yes  
Finished: Yes  
Enclosed: Yes  
Contiguous: Yes  
Permitted: Yes  
Wet space: No  
Addition: No  
Conversion: No

**18** Floor 2 - Bedroom

---



Dimensions: 11'0" x 11'0"  
Area: 120 sq. ft  
Counted as living area: Yes

Heated: Yes  
Finished: Yes  
Enclosed: Yes  
Contiguous: Yes  
Permitted: Yes  
Wet space: No  
Addition: No  
Conversion: No

**19** Floor 2 - Garage

---



Dimensions: 23'6" x 31'0"  
Area: 740 sq. ft  
Counted as living area: No

Heated: No  
Finished: Yes  
Enclosed: Yes  
Contiguous: Yes  
Permitted: Yes  
Wet space: No  
Addition: No  
Conversion: No

**20** Floor 2 - Kitchen

---



Dimensions: 15'6" x 23'4"  
Area: 348 sq. ft  
Counted as living area: Yes

Heated: Yes  
Finished: Yes  
Enclosed: Yes  
Contiguous: Yes  
Permitted: Yes  
Wet space: No  
Addition: No  
Conversion: No

## 21 Floor 2 - Primary Bedroom



Dimensions: 15'3" x 18'2"  
Area: 277 sq. ft  
Counted as living area: Yes

Heated: Yes  
Finished: Yes  
Enclosed: Yes  
Contiguous: Yes  
Permitted: Yes  
Wet space: No  
Addition: No  
Conversion: No

## 22 Floor 2 - Hall



Dimensions: 7'9" x 4'0"  
Area: 31 sq. ft  
Counted as living area: Yes

Heated: Yes  
Finished: Yes  
Enclosed: Yes  
Contiguous: Yes  
Permitted: Yes  
Wet space: No  
Addition: No  
Conversion: No

## 23 Floor 2 - Bath



Dimensions: 8'4" x 5'1"  
Area: 42 sq. ft  
Counted as living area: Yes

Heated: Yes  
Finished: Yes  
Enclosed: Yes  
Contiguous: Yes  
Permitted: Yes  
Wet space: Yes  
Addition: No  
Conversion: No

**24** Floor 2 - W.I.C.

---



Dimensions: 5'4" x 5'5"  
Area: 29 sq. ft  
Counted as living area: Yes

Heated: Yes  
Finished: Yes  
Enclosed: Yes  
Contiguous: Yes  
Permitted: Yes  
Wet space: No  
Addition: No  
Conversion: No

**25** Floor 2 - Bedroom

---



Dimensions: 13'7" x 13'6"  
Area: 183 sq. ft  
Counted as living area: Yes

Heated: Yes  
Finished: Yes  
Enclosed: Yes  
Contiguous: Yes  
Permitted: Yes  
Wet space: No  
Addition: No  
Conversion: No

**26** Floor 2 - Bath

---



Dimensions: 5'0" x 3'4"  
Area: 16 sq. ft  
Counted as living area: Yes

Heated: Yes  
Finished: Yes  
Enclosed: Yes  
Contiguous: Yes  
Permitted: Yes  
Wet space: No  
Addition: No  
Conversion: No

**27** Floor 2 - Deck

---



Dimensions: 29'8" x 28'3"  
Area: 765 sq. ft  
Counted as living area: No

Heated: No  
Finished: No  
Enclosed: No  
Contiguous: Yes  
Permitted: Yes  
Wet space: No  
Addition: No  
Conversion: No

**28** Floor 2 - Porch

---



Dimensions: 19'2" x 21'11"  
Area: 396 sq. ft  
Counted as living area: No

Heated: No  
Finished: No  
Enclosed: No  
Contiguous: Yes  
Permitted: Yes  
Wet space: No  
Addition: No  
Conversion: No

**29** Floor 2 - Room

---



Dimensions: 7'9" x 11'1"  
Area: 87 sq. ft  
Counted as living area: Yes

Heated: Yes  
Finished: Yes  
Enclosed: Yes  
Contiguous: Yes  
Permitted: Yes  
Wet space: No  
Addition: No  
Conversion: No

**30** Floor 2 - Laundry

---



Dimensions: 12'0" x 6'5"  
Area: 77 sq. ft  
Counted as living area: Yes

Heated: Yes  
Finished: Yes  
Enclosed: Yes  
Contiguous: Yes  
Permitted: Yes  
Wet space: No  
Addition: No  
Conversion: No

**31** Floor 2 - Dining Area

---



Dimensions: 14'0" x 12'7"  
Area: 175 sq. ft  
Counted as living area: Yes

Heated: Yes  
Finished: Yes  
Enclosed: Yes  
Contiguous: Yes  
Permitted: Yes  
Wet space: No  
Addition: No  
Conversion: No

**32** Floor 2 - W.I.C.

---



Dimensions: 10'11" x 16'9"  
Area: 149 sq. ft  
Counted as living area: Yes

Heated: Yes  
Finished: Yes  
Enclosed: Yes  
Contiguous: Yes  
Permitted: Yes  
Wet space: No  
Addition: No  
Conversion: No