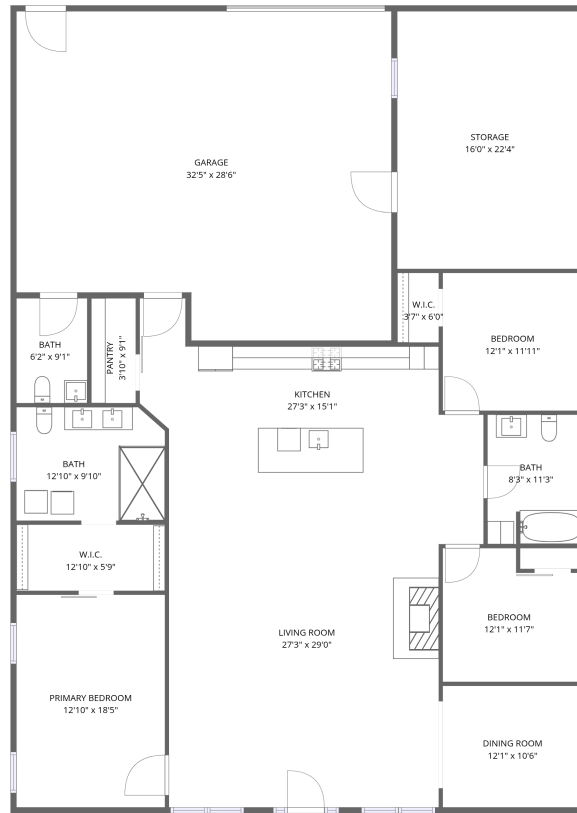


Home data report

935 McGuire Rd, New Market, TN, US



1st floor

Total Area: 2122 sq. ft

1st Floor: 2122 sq. ft

Excluded: Garage 862 sq. ft, Storage 358 sq. ft, Walls: 151 sq. ft

Property summary

 **1** Floors

 **3** Bedrooms

 **2** Bathrooms

Scan captured on Wed, 18 Mar 2026 15:40:01 GMT

FLOOR PLAN CREATED BY CUBICASA APP. MEASUREMENTS ARE CONSIDERED RELIABLE BUT NOT ACCURATE.

Home data report

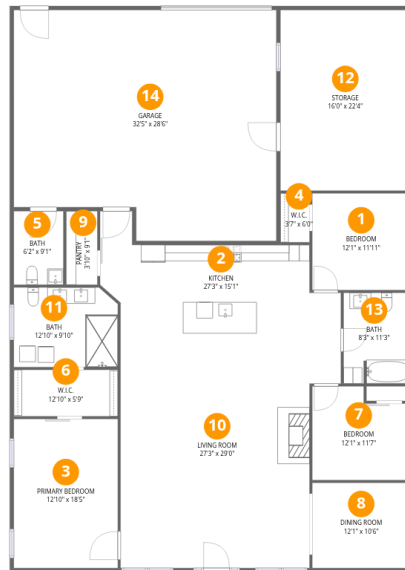
935 McGuire Rd, New Market, TN, US



1
Half baths



1
Garages



Room dimensions

Floor 1

Total: 2122 sqft

Excluded: 1220 sqft

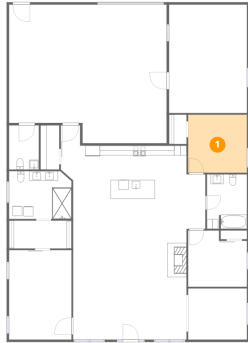
#		Dimensions	sqft	Counted as living area
1	Bedroom	12'1" x 11'11"	144 sq. ft	Yes
2	Kitchen	27'3" x 15'1"	410 sq. ft	Yes
3	Primary Bedroom	12'10" x 18'5"	237 sq. ft	Yes
4	W.I.C.	3'7" x 6'0"	22 sq. ft	Yes
5	Bath	6'2" x 9'1"	56 sq. ft	Yes
6	W.I.C.	12'10" x 5'9"	74 sq. ft	Yes
7	Bedroom	12'1" x 11'7"	140 sq. ft	Yes
8	Dining Room	12'1" x 10'6"	127 sq. ft	Yes
9	Pantry	3'10" x 9'1"	35 sq. ft	Yes
10	Living Room	27'3" x 29'0"	789 sq. ft	Yes
11	Bath	12'10" x 9'10"	126 sq. ft	Yes

Home data report

935 McGuire Rd, New Market, TN, US

#		Dimensions	sqft	Counted as living area
12	Storage	16'0" x 22'4"	358 sq. ft	No
13	Bath	8'3" x 11'3"	92 sq. ft	Yes
14	Garage	32'5" x 28'6"	923 sq. ft	No

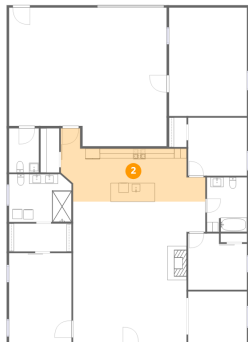
1 Floor 1 - Bedroom



Dimensions: 12'1" x 11'11"
Area: 144 sq. ft
Counted as living area: Yes

Heated: Yes
Finished: Yes
Enclosed: Yes
Contiguous: Yes
Permitted: Yes
Wet space: No
Addition: No
Conversion: No

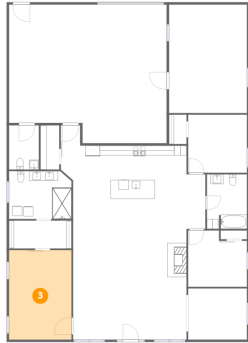
2 Floor 1 - Kitchen



Dimensions: 27'3" x 15'1"
Area: 410 sq. ft
Counted as living area: Yes

Heated: Yes
Finished: Yes
Enclosed: Yes
Contiguous: Yes
Permitted: Yes
Wet space: No
Addition: No
Conversion: No

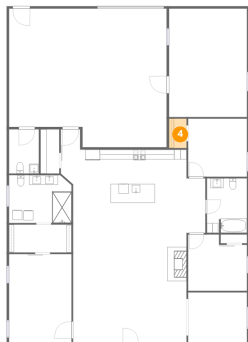
3 Floor 1 - Primary Bedroom



Dimensions: 12'10" x 18'5"
Area: 237 sq. ft
Counted as living area: Yes

Heated: Yes
Finished: Yes
Enclosed: Yes
Contiguous: Yes
Permitted: Yes
Wet space: No
Addition: No
Conversion: No

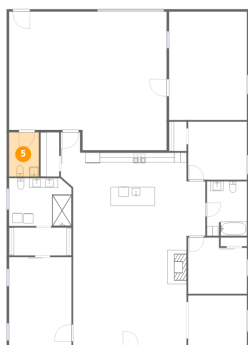
4 Floor 1 - W.I.C.



Dimensions: 3'7" x 6'0"
Area: 22 sq. ft
Counted as living area: Yes

Heated: Yes
Finished: Yes
Enclosed: Yes
Contiguous: Yes
Permitted: Yes
Wet space: No
Addition: No
Conversion: No

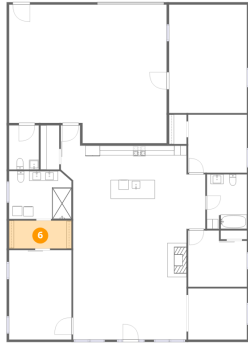
5 Floor 1 - Bath



Dimensions: 6'2" x 9'1"
Area: 56 sq. ft
Counted as living area: Yes

Heated: Yes
Finished: Yes
Enclosed: Yes
Contiguous: Yes
Permitted: Yes
Wet space: Yes
Addition: No
Conversion: No

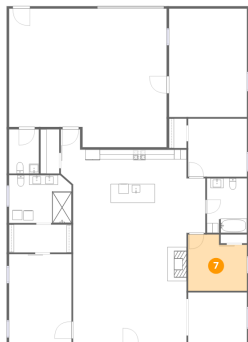
6 Floor 1 - W.I.C.



Dimensions: 12'10" x 5'9"
Area: 74 sq. ft
Counted as living area: Yes

Heated: Yes
Finished: Yes
Enclosed: Yes
Contiguous: Yes
Permitted: Yes
Wet space: No
Addition: No
Conversion: No

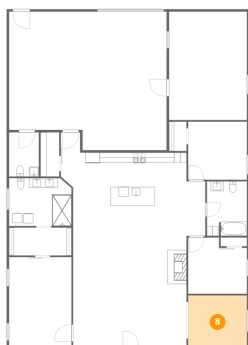
7 Floor 1 - Bedroom



Dimensions: 12'1" x 11'7"
Area: 140 sq. ft
Counted as living area: Yes

Heated: Yes
Finished: Yes
Enclosed: Yes
Contiguous: Yes
Permitted: Yes
Wet space: No
Addition: No
Conversion: No

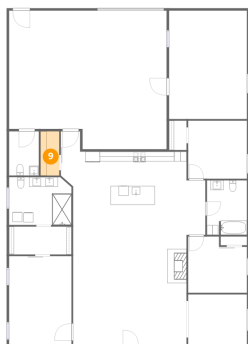
8 Floor 1 - Dining Room



Dimensions: 12'1" x 10'6"
Area: 127 sq. ft
Counted as living area: Yes

Heated: Yes
Finished: Yes
Enclosed: Yes
Contiguous: Yes
Permitted: Yes
Wet space: No
Addition: No
Conversion: No

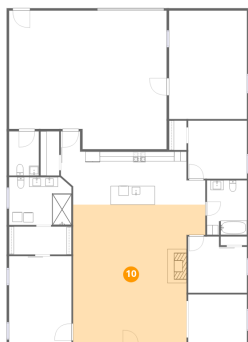
9 Floor 1 - Pantry



Dimensions: 3'10" x 9'1"
Area: 35 sq. ft
Counted as living area: Yes

Heated: Yes
Finished: Yes
Enclosed: Yes
Contiguous: Yes
Permitted: Yes
Wet space: No
Addition: No
Conversion: No

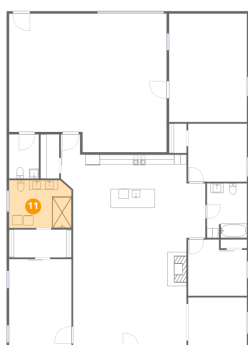
10 Floor 1 - Living Room



Dimensions: 27'3" x 29'0"
Area: 789 sq. ft
Counted as living area: Yes

Heated: Yes
Finished: Yes
Enclosed: Yes
Contiguous: Yes
Permitted: Yes
Wet space: No
Addition: No
Conversion: No

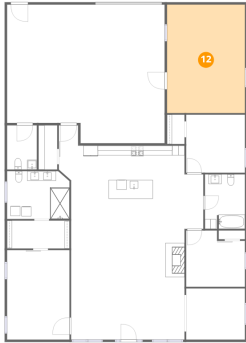
11 Floor 1 - Bath



Dimensions: 12'10" x 9'10"
Area: 126 sq. ft
Counted as living area: Yes

Heated: Yes
Finished: Yes
Enclosed: Yes
Contiguous: Yes
Permitted: Yes
Wet space: Yes
Addition: No
Conversion: No

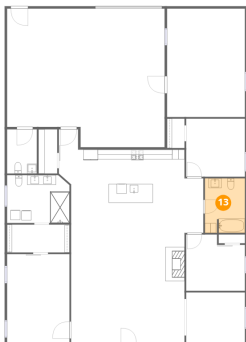
12 Floor 1 - Storage



Dimensions: 16'0" x 22'4"
Area: 358 sq. ft
Counted as living area: No

Heated: No
Finished: No
Enclosed: No
Contiguous: Yes
Permitted: Yes
Wet space: No
Addition: No
Conversion: No

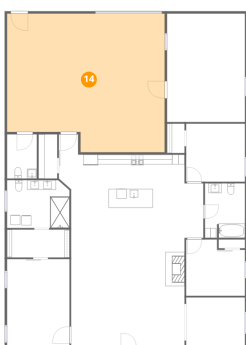
13 Floor 1 - Bath



Dimensions: 8'3" x 11'3"
Area: 92 sq. ft
Counted as living area: Yes

Heated: Yes
Finished: Yes
Enclosed: Yes
Contiguous: Yes
Permitted: Yes
Wet space: Yes
Addition: No
Conversion: No

14 Floor 1 - Garage



Dimensions: 32'5" x 28'6"
Area: 923 sq. ft
Counted as living area: No

Heated: No
Finished: No
Enclosed: Yes
Contiguous: Yes
Permitted: Yes
Wet space: No
Addition: No
Conversion: No