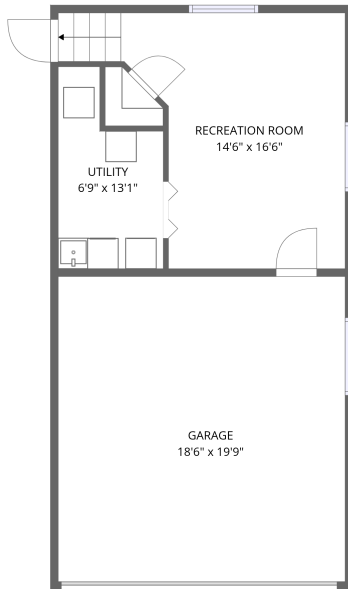
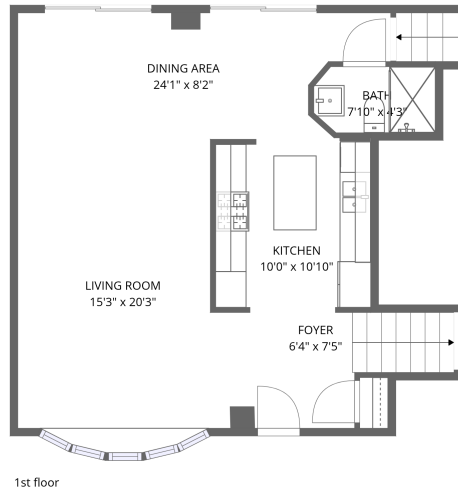


Home data report

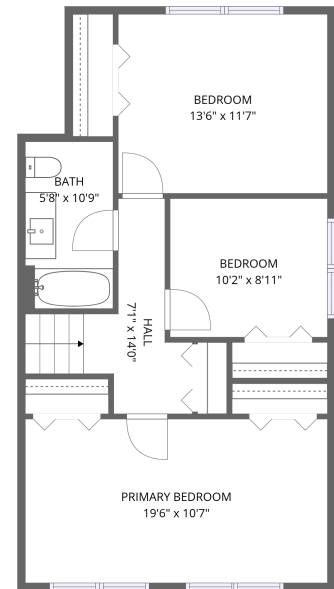
703 Westmere Road, Des Plaines, Cook County, Illinois, United States, 60016



Basement



1st floor



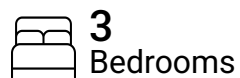
2nd floor

Total Area: 1611 sq. ft

Basement: 235 sq. ft, 1st Floor: 684 sq. ft, 2nd Floor: 692 sq. ft

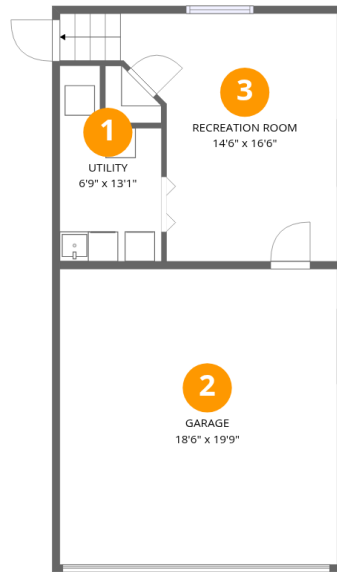
Excluded: Garage 365 sq. ft, Utility 71 sq. ft, Walls: 184 sq. ft

Property summary



Home data report

703 Westmere Road, Des Plaines, Cook County, Illinois, United States, 60016



Room dimensions

Floor 1 Below grade

Total:235sqft

Excluded: 436sqft

#		Dimensions	sqft	Counted as living area
1	Utility	6'9" x 13'1"	88 sq. ft	No
2	Garage	18'6" x 19'9"	365 sq. ft	No
3	Recreation Room	14'6" x 16'6"	239 sq. ft	Yes

Home data report

703 Westmere Road, Des Plaines, Cook County, Illinois, United States, 60016



Room dimensions

Floor 2

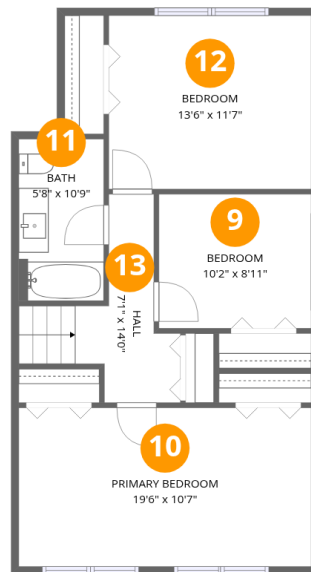
Total:684sqft

Excluded: 0sqft

#		Dimensions	sqft	Counted as living area
4	Bath	7'10" x 4'3"	33 sq. ft	Yes
5	Living Room	15'3" x 20'3"	308 sq. ft	Yes
6	Kitchen	10'0" x 10'10"	109 sq. ft	Yes
7	Foyer	6'4" x 7'5"	47 sq. ft	Yes
8	Dining Area	24'1" x 8'2"	197 sq. ft	Yes

Home data report

703 Westmere Road, Des Plaines, Cook County, Illinois, United States, 60016



Room dimensions

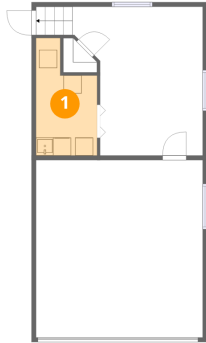
Floor 3

Total:692sqft

Excluded: 0sqft

#		Dimensions	sqft	Counted as living area
9	Bedroom	10'2" x 8'11"	91 sq. ft	Yes
10	Primary Bedroom	19'6" x 10'7"	206 sq. ft	Yes
11	Bath	5'8" x 10'9"	61 sq. ft	Yes
12	Bedroom	13'6" x 11'7"	156 sq. ft	Yes
13	Hall	7'1" x 14'0"	99 sq. ft	Yes

1 Floor 1 - Utility



Dimensions: 6'9" x 13'1"
Area: 88 sq. ft
Counted as living area: No

Heated: Yes
Finished: No
Enclosed: Yes
Contiguous: Yes
Permitted: Yes
Wet space: No
Addition: No
Conversion: No

2 Floor 1 - Garage



Dimensions: 18'6" x 19'9"
Area: 365 sq. ft
Counted as living area: No

Heated: No
Finished: No
Enclosed: Yes
Contiguous: Yes
Permitted: Yes
Wet space: No
Addition: No
Conversion: No

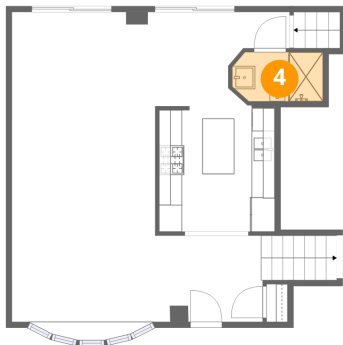
3 Floor 1 - Recreation Room



Dimensions: 14'6" x 16'6"
Area: 239 sq. ft
Counted as living area: Yes

Heated: Yes
Finished: Yes
Enclosed: Yes
Contiguous: Yes
Permitted: Yes
Wet space: No
Addition: No
Conversion: No

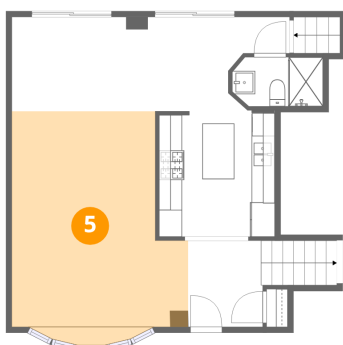
4 Floor 2 - Bath



Dimensions: 7'10" x 4'3"
Area: 33 sq. ft
Counted as living area: Yes

Heated: Yes
Finished: Yes
Enclosed: Yes
Contiguous: Yes
Permitted: Yes
Wet space: Yes
Addition: No
Conversion: No

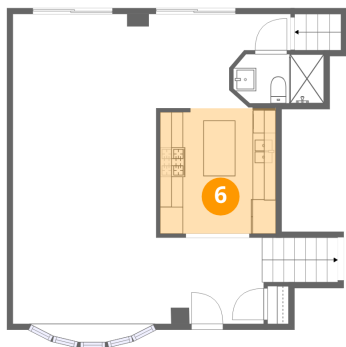
5 Floor 2 - Living Room



Dimensions: 15'3" x 20'3"
Area: 308 sq. ft
Counted as living area: Yes

Heated: Yes
Finished: Yes
Enclosed: Yes
Contiguous: Yes
Permitted: Yes
Wet space: No
Addition: No
Conversion: No

6 Floor 2 - Kitchen



Dimensions: 10'0" x 10'10"
Area: 109 sq. ft
Counted as living area: Yes

Heated: Yes
Finished: Yes
Enclosed: Yes
Contiguous: Yes
Permitted: Yes
Wet space: No
Addition: No
Conversion: No

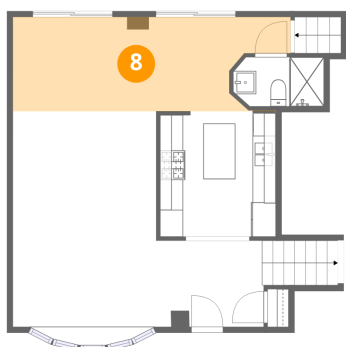
7 Floor 2 - Foyer



Dimensions: 6'4" x 7'5"
Area: 47 sq. ft
Counted as living area: Yes

Heated: Yes
Finished: Yes
Enclosed: Yes
Contiguous: Yes
Permitted: Yes
Wet space: No
Addition: No
Conversion: No

8 Floor 2 - Dining Area



Dimensions: 24'1" x 8'2"
Area: 197 sq. ft
Counted as living area: Yes

Heated: Yes
Finished: Yes
Enclosed: Yes
Contiguous: Yes
Permitted: Yes
Wet space: No
Addition: No
Conversion: No

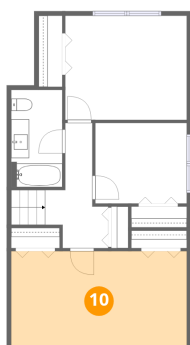
9 Floor 3 - Bedroom



Dimensions: 10'2" x 8'11"
Area: 91 sq. ft
Counted as living area: Yes

Heated: Yes
Finished: Yes
Enclosed: Yes
Contiguous: Yes
Permitted: Yes
Wet space: No
Addition: No
Conversion: No

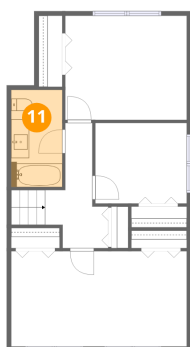
10 Floor 3 - Primary Bedroom



Dimensions: 19'6" x 10'7"
Area: 206 sq. ft
Counted as living area: Yes

Heated: Yes
Finished: Yes
Enclosed: Yes
Contiguous: Yes
Permitted: Yes
Wet space: No
Addition: No
Conversion: No

11 Floor 3 - Bath

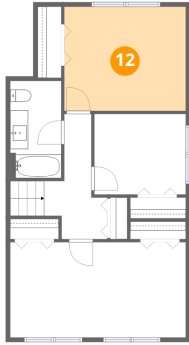


Dimensions: 5'8" x 10'9"
Area: 61 sq. ft
Counted as living area: Yes

Heated: Yes
Finished: Yes
Enclosed: Yes
Contiguous: Yes
Permitted: Yes
Wet space: Yes
Addition: No
Conversion: No

703 Westmere Road, Des Plaines, Cook County, Illinois, United States, 60016

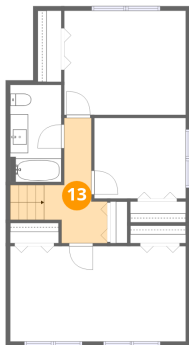
12 Floor 3 - Bedroom



Dimensions: 13'6" x 11'7"
Area: 156 sq. ft
Counted as living area: Yes

Heated: Yes
Finished: Yes
Enclosed: Yes
Contiguous: Yes
Permitted: Yes
Wet space: No
Addition: No
Conversion: No

13 Floor 3 - Hall



Dimensions: 7'1" x 14'0"
Area: 99 sq. ft
Counted as living area: Yes

Heated: Yes
Finished: Yes
Enclosed: Yes
Contiguous: Yes
Permitted: Yes
Wet space: No
Addition: No
Conversion: No