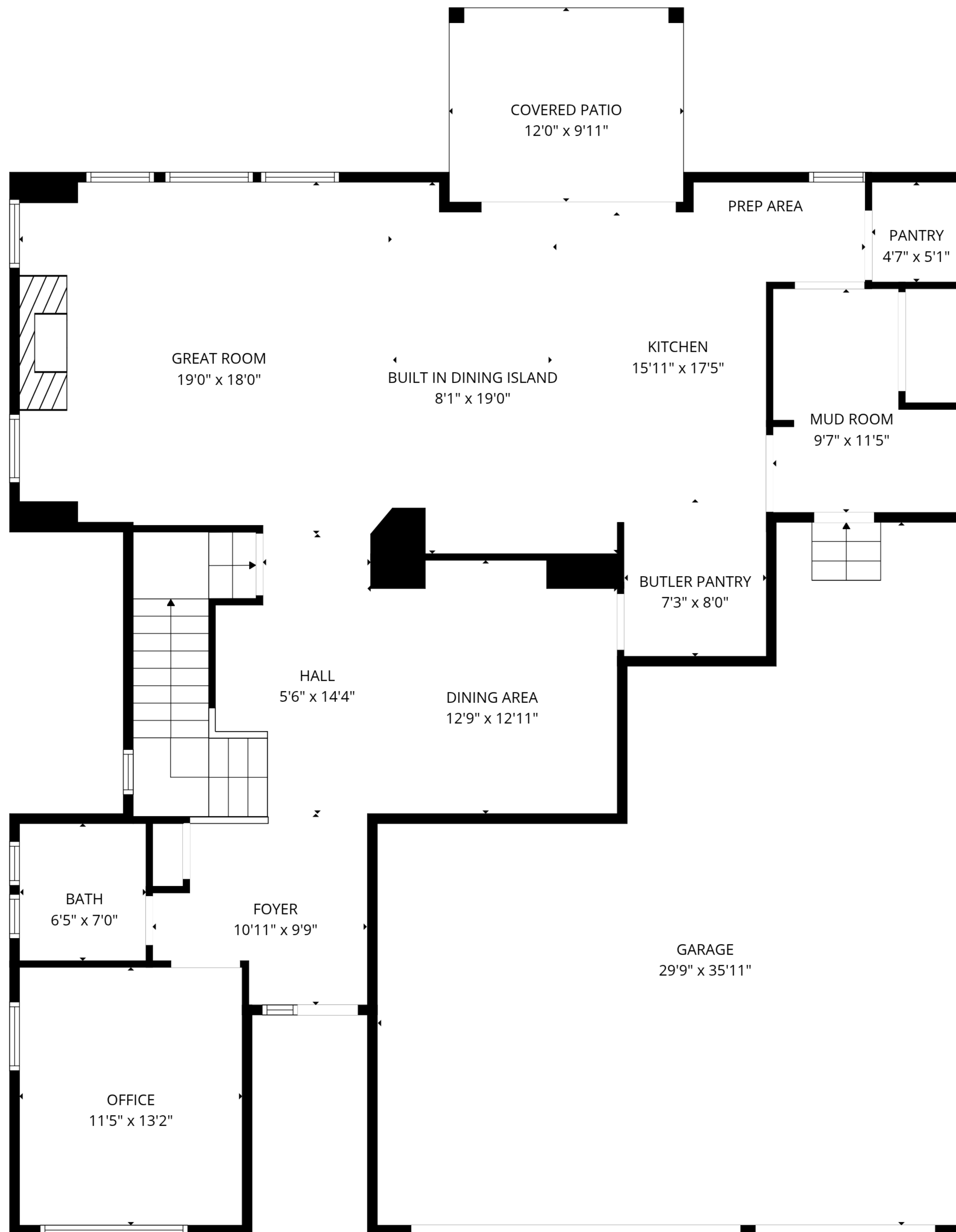


BASEMENT  
42'3" x 32'3"

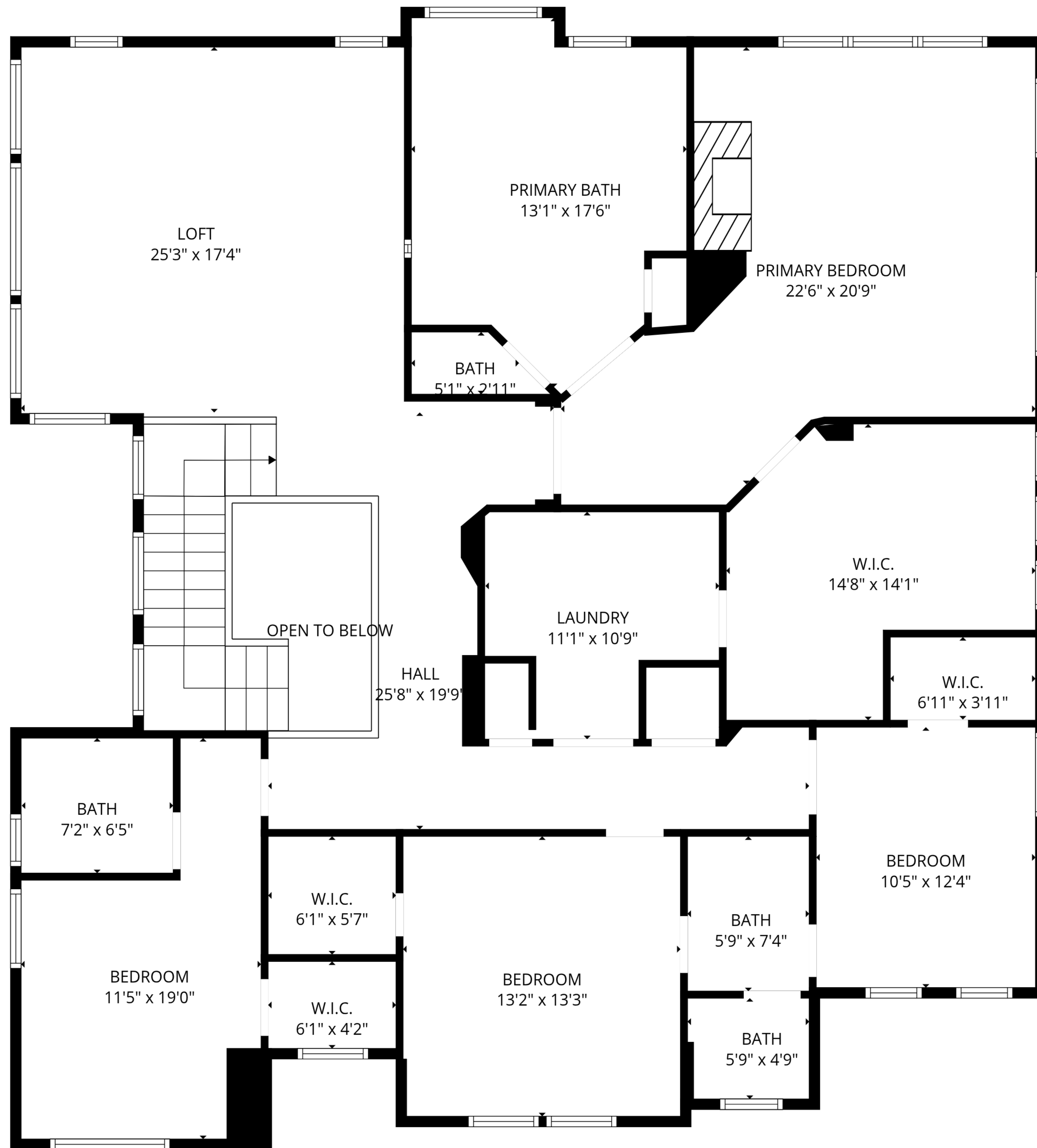
**TOTAL: 3750 sq. ft**  
Basement: 0 sq. ft, 1st floor: 1530 sq. ft, 2nd floor: 2220 sq. ft  
EXCLUDED AREAS: BASEMENT: 1080 sq. ft, GARAGE: 819 sq. ft, COVERED PATIO: 119 sq. ft,  
OPEN TO BELOW: 60 sq. ft, WALLS: 336 sq. ft



**TOTAL: 3750 sq. ft**

Basement: 0 sq. ft, 1st floor: 1530 sq. ft, 2nd floor: 2220 sq. ft

EXCLUDED AREAS: BASEMENT: 1080 sq. ft, GARAGE: 819 sq. ft, COVERED PATIO: 119 sq. ft,  
OPEN TO BELOW: 60 sq. ft, WALLS: 336 sq. ft

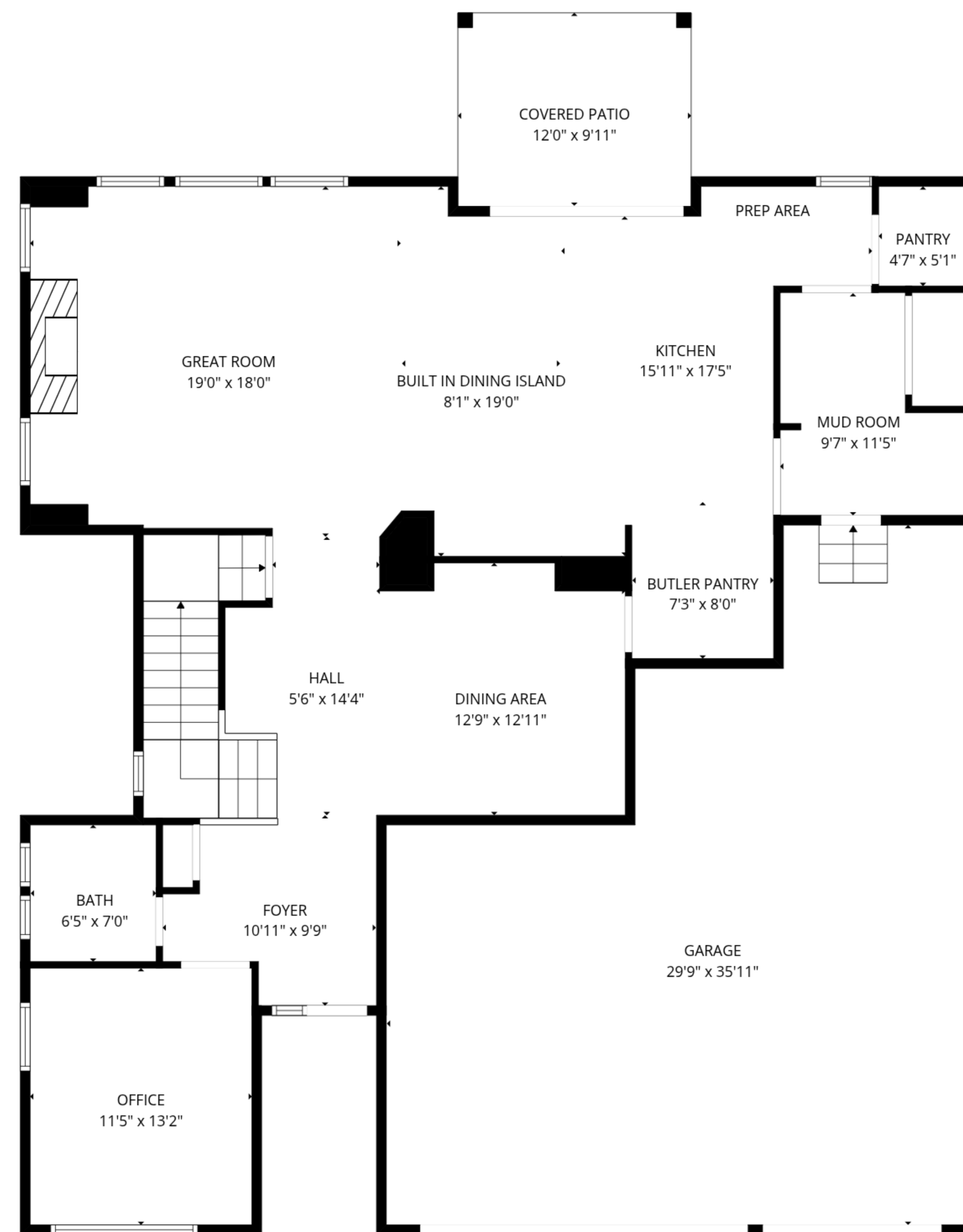


**TOTAL: 3750 sq. ft**

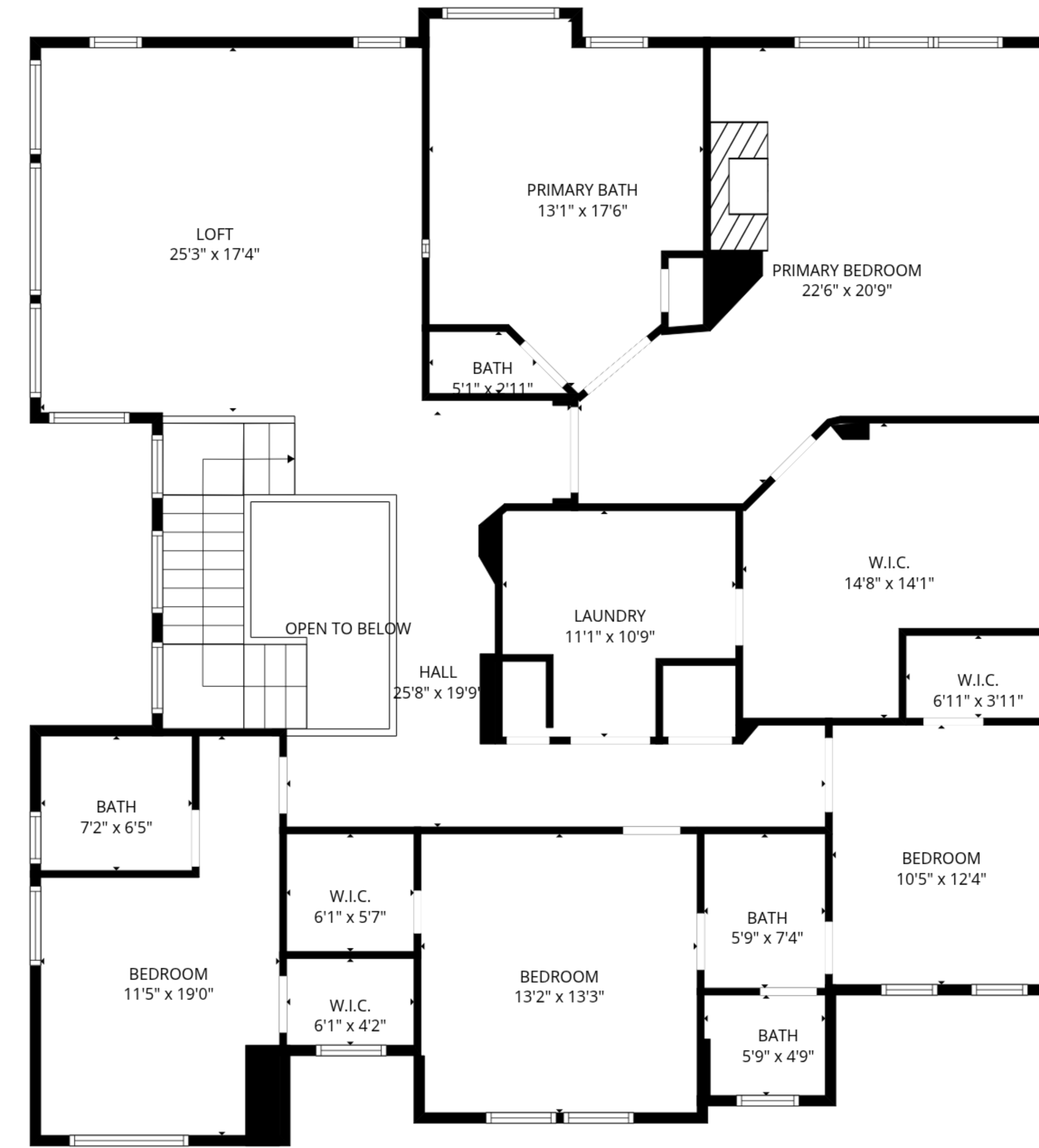
Basement: 0 sq. ft, 1st floor: 1530 sq. ft, 2nd floor: 2220 sq. ft

EXCLUDED AREAS: BASEMENT: 1080 sq. ft, GARAGE: 819 sq. ft, COVERED PATIO: 119 sq. ft,

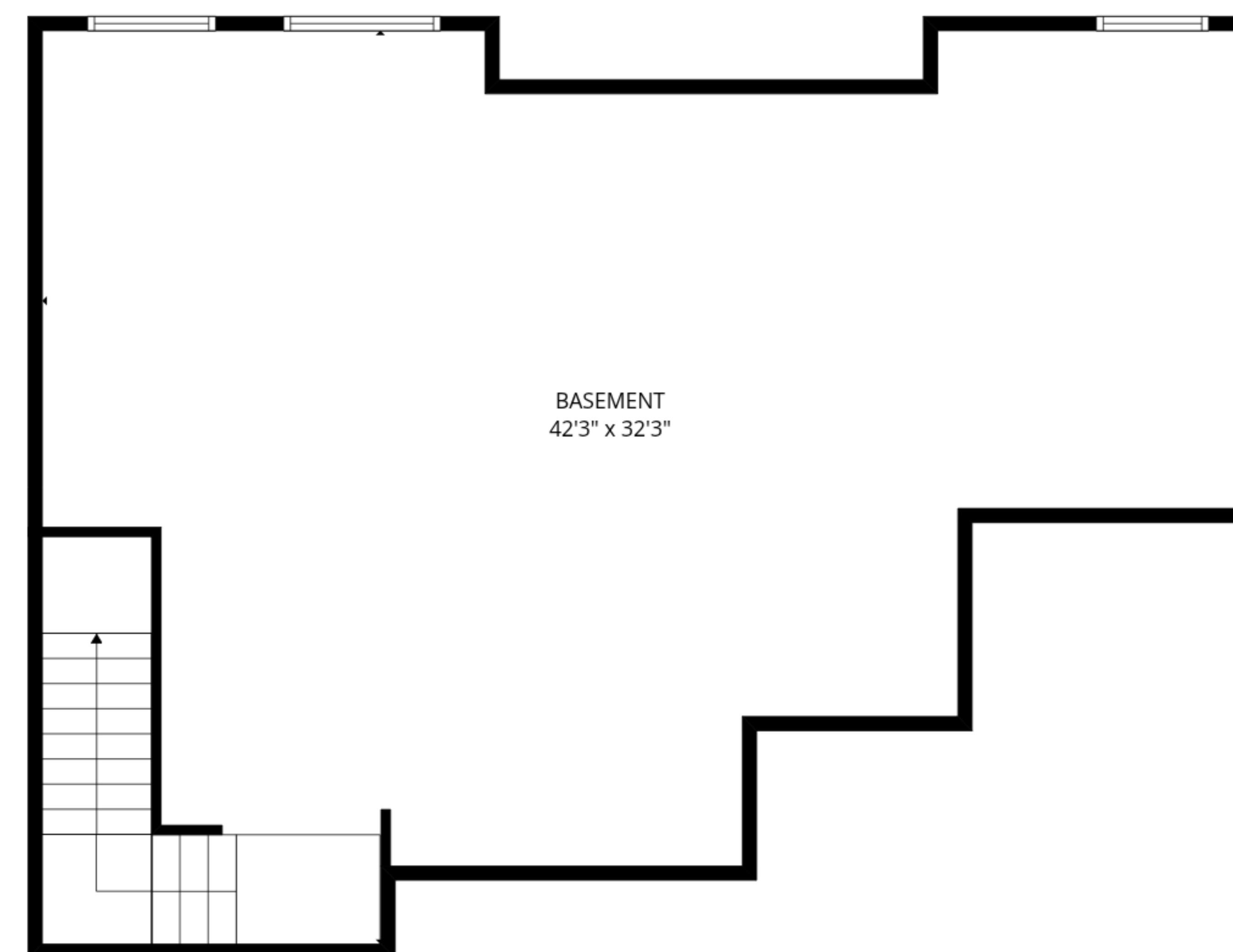
OPEN TO BELOW: 60 sq. ft, WALLS: 336 sq. ft



1st floor



2nd floor



Basement

**TOTAL: 3750 sq. ft**  
 Basement: 0 sq. ft, 1st floor: 1530 sq. ft, 2nd floor: 2220 sq. ft  
 EXCLUDED AREAS: BASEMENT: 1080 sq. ft, GARAGE: 819 sq. ft, COVERED PATIO: 119 sq. ft,  
 OPEN TO BELOW: 60 sq. ft, WALLS: 336 sq. ft