

2614 Lochview Street, Fort Mill, York County, South Carolina, United States, 29715

Total area: 2967 sq. ft
Gross living area: 2866 sq. ft

Finished area: 2866 sq. ft
Non-standard finished area: 101 sq. ft

Level 1



Total area: 1624 sq. ft
Gross living area: 1523 sq. ft

Finished area: 1523 sq. ft
Non-standard finished area: 101 sq. ft

2614 Lochview Street, Fort Mill, York County, South Carolina, United States, 29715

Total area: 2967 sq. ft
Gross living area: 2866 sq. ft

Finished area: 2866 sq. ft
Non-standard finished area: 101 sq. ft

Level 1

Space	Area (sq. ft)	Calculation <small>Coordinate Polygon Area Algorithm using inches</small>
Finished Area • Living area • Finished Area	1523	$ \begin{aligned} & -((206.9 + 206.9) * (-62.2 - 54.8) + (206.9 + 399) * (54.8 - 54.8) + (399 + 399) * (54.8 - 273) + \\ & (399 + 363.3) * (273 - 273) + (363.3 + 363.3) * (273 - 302.9) + (363.3 + 361.3) * (302.9 - 308.9) + \\ & (361.3 + 361.3) * (308.9 - 335.9) + (361.3 + 372.8) * (335.9 - 335.9) + (372.8 + 372.8) * (335.9 - \\ & 339.9) + (372.8 + 378.8) * (339.9 - 341.9) + (378.8 + 378.8) * (341.9 - 376.4) + (378.8 + 399) * \\ & (376.4 - 376.4) + (399 + 399) * (376.4 - 423.7) + (399 + 393) * (423.7 - 423.7) + (393 + 393) * \\ & (423.7 - 427.7) + (393 + 291.5) * (427.7 - 427.7) + (291.5 + 291.5) * (427.7 - 470.7) + (291.5 + \\ & 350.2) * (470.7 - 470.7) + (350.2 + 350.2) * (470.7 - 558.7) + (350.2 + 393) * (558.7 - 558.7) + \\ & (393 + 393) * (558.7 - 562.7) + (393 + 399) * (562.7 - 562.7) + (399 + 399) * (562.7 - 611.6) + \\ & (399 + 58.8) * (611.6 - 611.6) + (58.8 + 58.8) * (611.6 - -62.2) + (58.8 + 206.9) * (-62.2 - -62.2)) * \\ & 0.5 * 0.00694 + -((637.2 + 637.2) * (86.7 - 241.4) + (637.2 + 631.2) * (241.4 - 241.4) + (631.2 + \\ & 631.2) * (241.4 - 247.4) + (631.2 + 489.2) * (247.4 - 247.4) + (489.2 + 489.2) * (247.4 - 241.4) + \\ & (489.2 + 483.2) * (241.4 - 241.4) + (483.2 + 483.2) * (241.4 - 86.7) + (483.2 + 637.2) * (86.7 - \\ & 86.7)) * 0.5 * 0.00694 \end{aligned} $
UNDEFINED • Non-living area • Non-Standard Finished Area	91	$ \begin{aligned} & -((310.4 + 310.4) * (611.6 - 664.4) + (310.4 + 62.8) * (664.4 - 664.4) + (62.8 + 62.8) * (664.4 - \\ & 611.6) + (62.8 + 310.4) * (611.6 - 611.6)) * 0.5 * 0.00694 \end{aligned} $
UNDEFINED • Non-living area • Non-Standard Finished Area	10	$ \begin{aligned} & -((399 + 399) * (302.9 - 341.9) + (399 + 378.8) * (341.9 - 341.9) + (378.8 + 372.8) * (341.9 - \\ & 339.9) + (372.8 + 372.8) * (339.9 - 335.9) + (372.8 + 361.3) * (335.9 - 335.9) + (361.3 + 361.3) * \\ & (335.9 - 308.9) + (361.3 + 363.3) * (308.9 - 302.9) + (363.3 + 399) * (302.9 - 302.9)) * 0.5 * \\ & 0.00694 \end{aligned} $
GARAGE • Attached Garage	403	$ \begin{aligned} & -((631.2 + 631.2) * (247.4 - 489.8) + (631.2 + 399) * (489.8 - 489.8) + (399 + 399) * (489.8 - \\ & 376.4) + (399 + 378.8) * (376.4 - 376.4) + (378.8 + 378.8) * (376.4 - 341.9) + (378.8 + 399) * \\ & (341.9 - 341.9) + (399 + 399) * (341.9 - 302.9) + (399 + 363.3) * (302.9 - 302.9) + (363.3 + 363.3) * \\ & * (302.9 - 273) + (363.3 + 399) * (273 - 273) + (399 + 399) * (273 - 247.4) + (399 + 631.2) * \\ & (247.4 - 247.4)) * 0.5 * 0.00694 \end{aligned} $

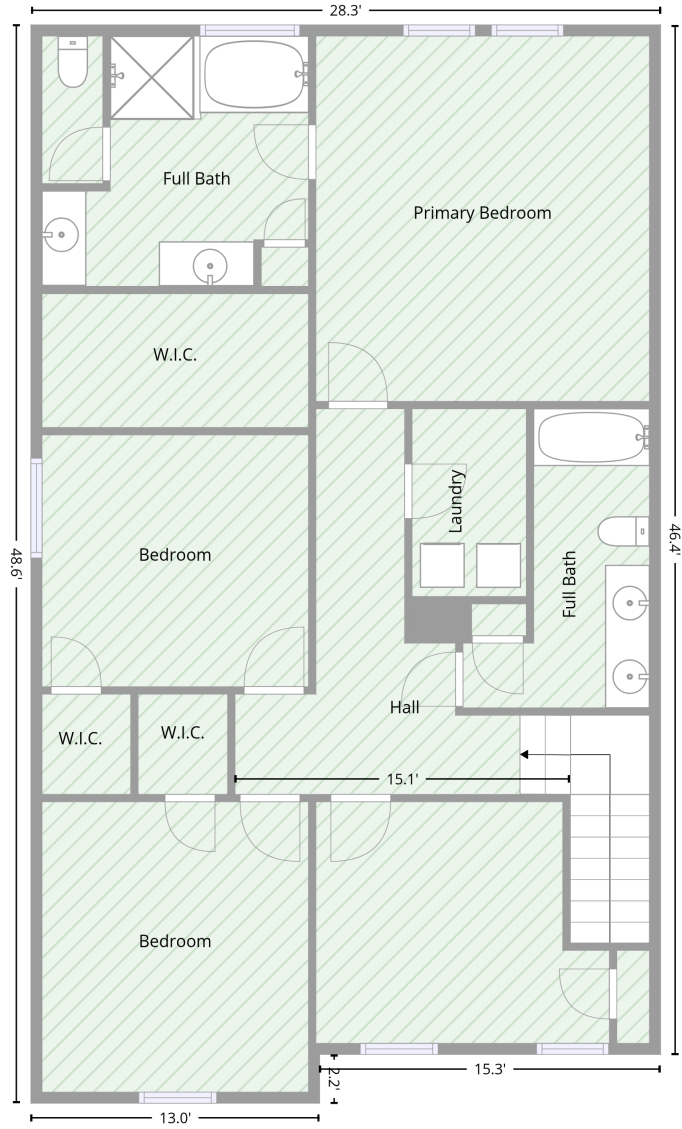
2614 Lochview Street, Fort Mill, York County, South Carolina, United States, 29715

Total area: 2967 sq. ft
Gross living area: 2866 sq. ft

Finished area: 2866 sq. ft
Non-standard finished area: 101 sq. ft

Level 2

1343 sq. ft Finished Area
Above Grade



Total area: 1343 sq. ft
Gross living area: 1343 sq. ft

Finished area: 1343 sq. ft
Non-standard finished area: 0 sq. ft

2614 Lochview Street, Fort Mill, York County, South Carolina, United States, 29715

Total area: 2967 sq. ft

Gross living area: 2866 sq. ft

Finished area: 2866 sq. ft

Non-standard finished area: 101 sq. ft

Level 2

Space	Area (sq. ft)	Calculation <small>Coordinate Polygon Area Algorithm using inches</small>
Finished Area	1343	$-\left((399 + 399) * (54.8 - 611.6) + (399 + 214.8) * (611.6 - 611.6) + (214.8 + 214.8) * (611.6 - 637.9) + (214.8 + 58.8) * (637.9 - 637.9) + (58.8 + 58.8) * (637.9 - 54.8) + (58.8 + 399) * (54.8 - 54.8)\right) * 0.5 * 0.00694 + -\left((350.1 + 169.1) * (470.4 - 470.4) + (169.1 + 169.1) * (470.4 - 470.9) + (169.1 + 349.9) * (470.9 - 470.9) + (349.9 + 350.1) * (470.9 - 470.4)\right) * 0.5 * 0.00694$
• Living area		
• Finished Area		

2614 Lochview Street, Fort Mill, York County, South Carolina, United States, 29715

Total area: 2967 sq. ft

Gross living area: 2866 sq. ft

Finished area: 2866 sq. ft

Non-standard finished area: 101 sq. ft

Property UPD

Data	Value
Structure	1
Unit	1
Level Number	1
Below Grade	false
Level Low Ceiling	false
ADU Indicator	false
Total Area	1624
Finished Area	1523
Non-Standard Finished Area	101
Structure	1
Unit	1
Level Number	2
Below Grade	false
Level Low Ceiling	false
ADU Indicator	false
Total Area	1343
Finished Area	1343
Non-Standard Finished Area	0