

Home data report

3401 N 34th Pl, Phoenix, AZ, US



**Total Area: 3800 sq. ft**

1st Floor: 3800 sq. ft

Excluded: Walls: 183 sq. ft

## Property summary



**1**  
Floors



**4**  
Bedrooms



**4**  
Bathrooms



**1**  
Garages

# Home data report

## 3401 N 34th Pl, Phoenix, AZ, US



### Room dimensions

Floor 1

Total: 3800sqft Excluded: 0sqft

| #  |                 | Dimensions     | sqft       | Counted as living area |
|----|-----------------|----------------|------------|------------------------|
| 1  | Foyer           | 7'2" x 13'8"   | 98 sq. ft  | Yes                    |
| 2  | Primary Bath    | 10'7" x 14'6"  | 126 sq. ft | Yes                    |
| 3  | W.I.C.          | 7'5" x 5'10"   | 43 sq. ft  | Yes                    |
| 4  | Bath            | 9'3" x 15'10"  | 121 sq. ft | Yes                    |
| 5  | Primary Bedroom | 14'10" x 20'1" | 289 sq. ft | Yes                    |
| 6  | Kitchen         | 14'7" x 18'6"  | 244 sq. ft | Yes                    |
| 7  | W.I.C.          | 8'10" x 11'4"  | 100 sq. ft | Yes                    |
| 8  | Laundry         | 8'5" x 10'1"   | 76 sq. ft  | Yes                    |
| 9  | Bath            | 10'10" x 6'7"  | 71 sq. ft  | Yes                    |
| 10 | Living Room     | 32'7" x 20'9"  | 565 sq. ft | Yes                    |
| 11 | Bath            | 3'6" x 5'10"   | 21 sq. ft  | Yes                    |

Home data report

**3401 N 34th Pl,Phoenix,AZ,US**

| #  |             | Dimensions     | sqft       | Counted as living area |
|----|-------------|----------------|------------|------------------------|
| 12 | Garage      | 32'0" x 22'1"  | 684 sq. ft | Yes                    |
| 13 | Dining Area | 9'5" x 21'10"  | 205 sq. ft | Yes                    |
| 14 | Office      | 15'7" x 14'3"  | 170 sq. ft | Yes                    |
| 15 | Hall        | 18'6" x 4'7"   | 85 sq. ft  | Yes                    |
| 16 | Pantry      | 11'6" x 5'0"   | 57 sq. ft  | Yes                    |
| 17 | Bedroom     | 12'0" x 15'10" | 191 sq. ft | Yes                    |
| 18 | Bedroom     | 11'10" x 13'4" | 158 sq. ft | Yes                    |
| 19 | Bedroom     | 15'8" x 13'3"  | 186 sq. ft | Yes                    |
| 20 | Bath        | 7'5" x 9'9"    | 72 sq. ft  | Yes                    |
| 21 | Hall        | 3'4" x 3'7"    | 12 sq. ft  | Yes                    |
| 22 | Bath        | 5'2" x 3'5"    | 18 sq. ft  | Yes                    |

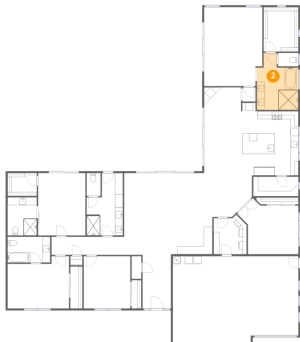
## 1 Floor 1 - Foyer



Dimensions: 7'2" x 13'8"  
Area: 98 sq. ft  
Counted as living area: Yes

Heated: Yes  
Finished: Yes  
Enclosed: Yes  
Contiguous: Yes  
Permitted: Yes  
Wet space: No  
Addition: No  
Conversion: No

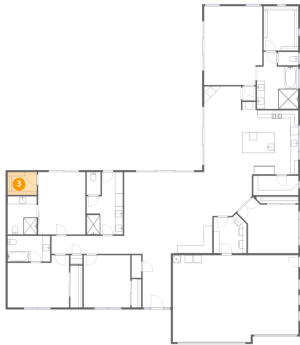
## 2 Floor 1 - Primary Bath



Dimensions: 10'7" x 14'6"  
Area: 126 sq. ft  
Counted as living area: Yes

Heated: Yes  
Finished: Yes  
Enclosed: Yes  
Contiguous: Yes  
Permitted: Yes  
Wet space: Yes  
Addition: No  
Conversion: No

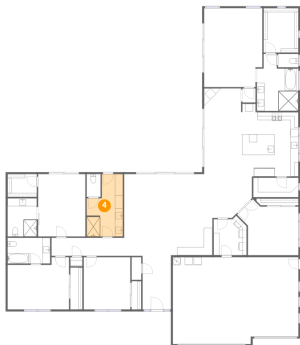
**3 Floor 1 - W.I.C.**



Dimensions: 7'5" x 5'10"  
Area: 43 sq. ft  
Counted as living area: Yes

Heated: Yes  
Finished: Yes  
Enclosed: Yes  
Contiguous: Yes  
Permitted: Yes  
Wet space: No  
Addition: No  
Conversion: No

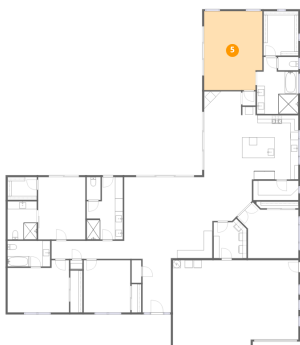
**4 Floor 1 - Bath**



Dimensions: 9'3" x 15'10"  
Area: 121 sq. ft  
Counted as living area: Yes

Heated: Yes  
Finished: Yes  
Enclosed: Yes  
Contiguous: Yes  
Permitted: Yes  
Wet space: Yes  
Addition: No  
Conversion: No

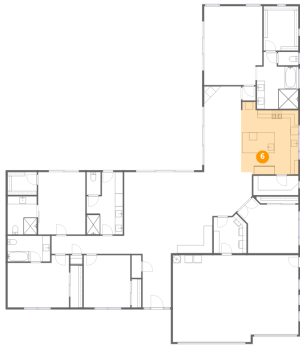
**5 Floor 1 - Primary Bedroom**



Dimensions: 14'10" x 20'1"  
Area: 289 sq. ft  
Counted as living area: Yes

Heated: Yes  
Finished: Yes  
Enclosed: Yes  
Contiguous: Yes  
Permitted: Yes  
Wet space: No  
Addition: No  
Conversion: No

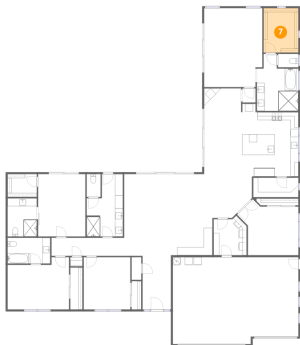
**6** Floor 1 - Kitchen



Dimensions: 14'7" x 18'6"  
Area: 244 sq. ft  
Counted as living area: Yes

Heated: Yes  
Finished: Yes  
Enclosed: Yes  
Contiguous: Yes  
Permitted: Yes  
Wet space: No  
Addition: No  
Conversion: No

**7** Floor 1 - W.I.C.



Dimensions: 8'10" x 11'4"  
Area: 100 sq. ft  
Counted as living area: Yes

Heated: Yes  
Finished: Yes  
Enclosed: Yes  
Contiguous: Yes  
Permitted: Yes  
Wet space: No  
Addition: No  
Conversion: No

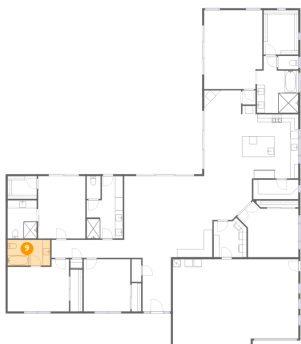
**8** Floor 1 - Laundry



Dimensions: 8'5" x 10'1"  
Area: 76 sq. ft  
Counted as living area: Yes

Heated: Yes  
Finished: Yes  
Enclosed: Yes  
Contiguous: Yes  
Permitted: Yes  
Wet space: No  
Addition: No  
Conversion: No

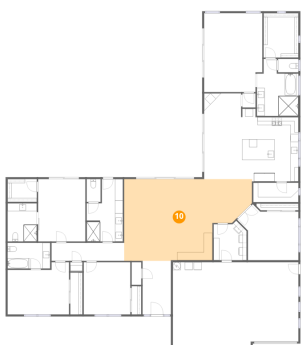
### 9 Floor 1 - Bath



Dimensions: 10'10" x 6'7"  
Area: 71 sq. ft  
Counted as living area: Yes

Heated: Yes  
Finished: Yes  
Enclosed: Yes  
Contiguous: Yes  
Permitted: Yes  
Wet space: Yes  
Addition: No  
Conversion: No

### 10 Floor 1 - Living Room



Dimensions: 32'7" x 20'9"  
Area: 565 sq. ft  
Counted as living area: Yes

Heated: Yes  
Finished: Yes  
Enclosed: Yes  
Contiguous: Yes  
Permitted: Yes  
Wet space: No  
Addition: No  
Conversion: No

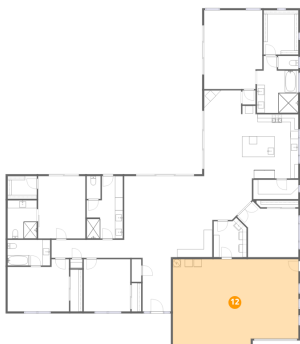
### 11 Floor 1 - Bath



Dimensions: 3'6" x 5'10"  
Area: 21 sq. ft  
Counted as living area: Yes

Heated: Yes  
Finished: Yes  
Enclosed: Yes  
Contiguous: Yes  
Permitted: Yes  
Wet space: Yes  
Addition: No  
Conversion: No

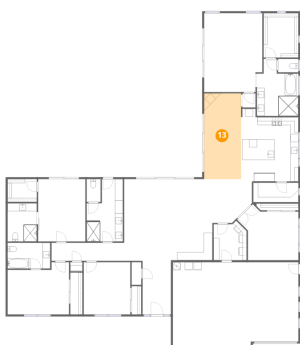
## 12 Floor 1 - Garage



Dimensions: 32'0" x 22'1"  
Area: 684 sq. ft  
Counted as living area: No

Heated: No  
Finished: Yes  
Enclosed: Yes  
Contiguous: Yes  
Permitted: Yes  
Wet space: No  
Addition: No  
Conversion: No

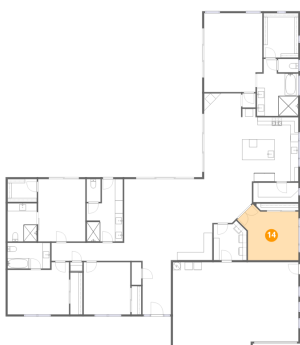
## 13 Floor 1 - Dining Area



Dimensions: 9'5" x 21'10"  
Area: 205 sq. ft  
Counted as living area: Yes

Heated: Yes  
Finished: Yes  
Enclosed: Yes  
Contiguous: Yes  
Permitted: Yes  
Wet space: No  
Addition: No  
Conversion: No

## 14 Floor 1 - Office

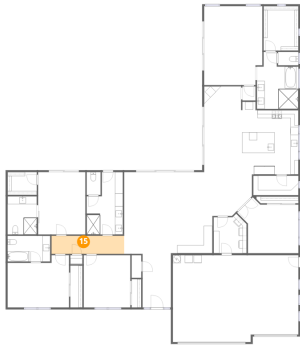


Dimensions: 15'7" x 14'3"  
Area: 170 sq. ft  
Counted as living area: Yes

Heated: Yes  
Finished: Yes  
Enclosed: Yes  
Contiguous: Yes  
Permitted: Yes  
Wet space: No  
Addition: No  
Conversion: No

**15** Floor 1 - Hall

---



Dimensions: 18'6" x 4'7"  
Area: 85 sq. ft  
Counted as living area: Yes

Heated: Yes  
Finished: Yes  
Enclosed: Yes  
Contiguous: Yes  
Permitted: Yes  
Wet space: No  
Addition: No  
Conversion: No

**16** Floor 1 - Pantry

---

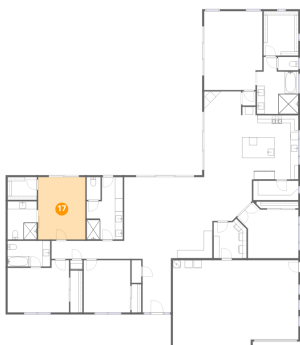


Dimensions: 11'6" x 5'0"  
Area: 57 sq. ft  
Counted as living area: Yes

Heated: Yes  
Finished: Yes  
Enclosed: Yes  
Contiguous: Yes  
Permitted: Yes  
Wet space: No  
Addition: No  
Conversion: No

**17** Floor 1 - Bedroom

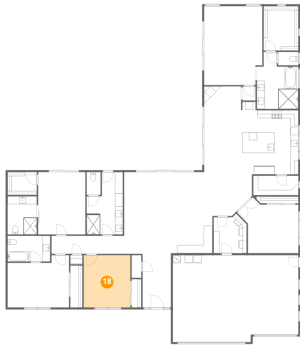
---



Dimensions: 12'0" x 15'10"  
Area: 191 sq. ft  
Counted as living area: Yes

Heated: Yes  
Finished: Yes  
Enclosed: Yes  
Contiguous: Yes  
Permitted: Yes  
Wet space: No  
Addition: No  
Conversion: No

**18** Floor 1 - Bedroom



Dimensions: 11'10" x 13'4"  
Area: 158 sq. ft  
Counted as living area: Yes

Heated: Yes  
Finished: Yes  
Enclosed: Yes  
Contiguous: Yes  
Permitted: Yes  
Wet space: No  
Addition: No  
Conversion: No

**19** Floor 1 - Bedroom



Dimensions: 15'8" x 13'3"  
Area: 186 sq. ft  
Counted as living area: Yes

Heated: Yes  
Finished: Yes  
Enclosed: Yes  
Contiguous: Yes  
Permitted: Yes  
Wet space: No  
Addition: No  
Conversion: No

**20** Floor 1 - Bath



Dimensions: 7'5" x 9'9"  
Area: 72 sq. ft  
Counted as living area: Yes

Heated: Yes  
Finished: Yes  
Enclosed: Yes  
Contiguous: Yes  
Permitted: Yes  
Wet space: Yes  
Addition: No  
Conversion: No

**21** Floor 1 - Hall

---



**Dimensions:** 3'4" x 3'7"  
**Area:** 12 sq. ft  
**Counted as living area:** Yes

**Heated:** Yes  
**Finished:** Yes  
**Enclosed:** Yes  
**Contiguous:** Yes  
**Permitted:** Yes  
**Wet space:** No  
**Addition:** No  
**Conversion:** No

**22** Floor 1 - Bath

---



**Dimensions:** 5'2" x 3'5"  
**Area:** 18 sq. ft  
**Counted as living area:** Yes

**Heated:** Yes  
**Finished:** Yes  
**Enclosed:** Yes  
**Contiguous:** Yes  
**Permitted:** Yes  
**Wet space:** Yes  
**Addition:** No  
**Conversion:** No